

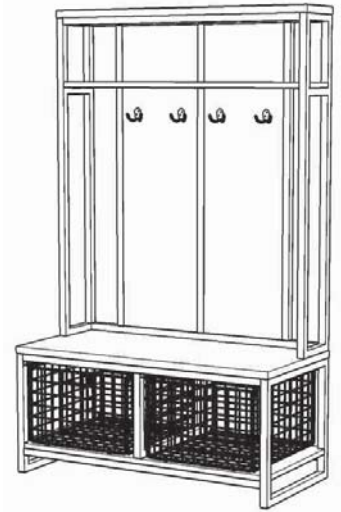
Hall Tree

IMPORTANT

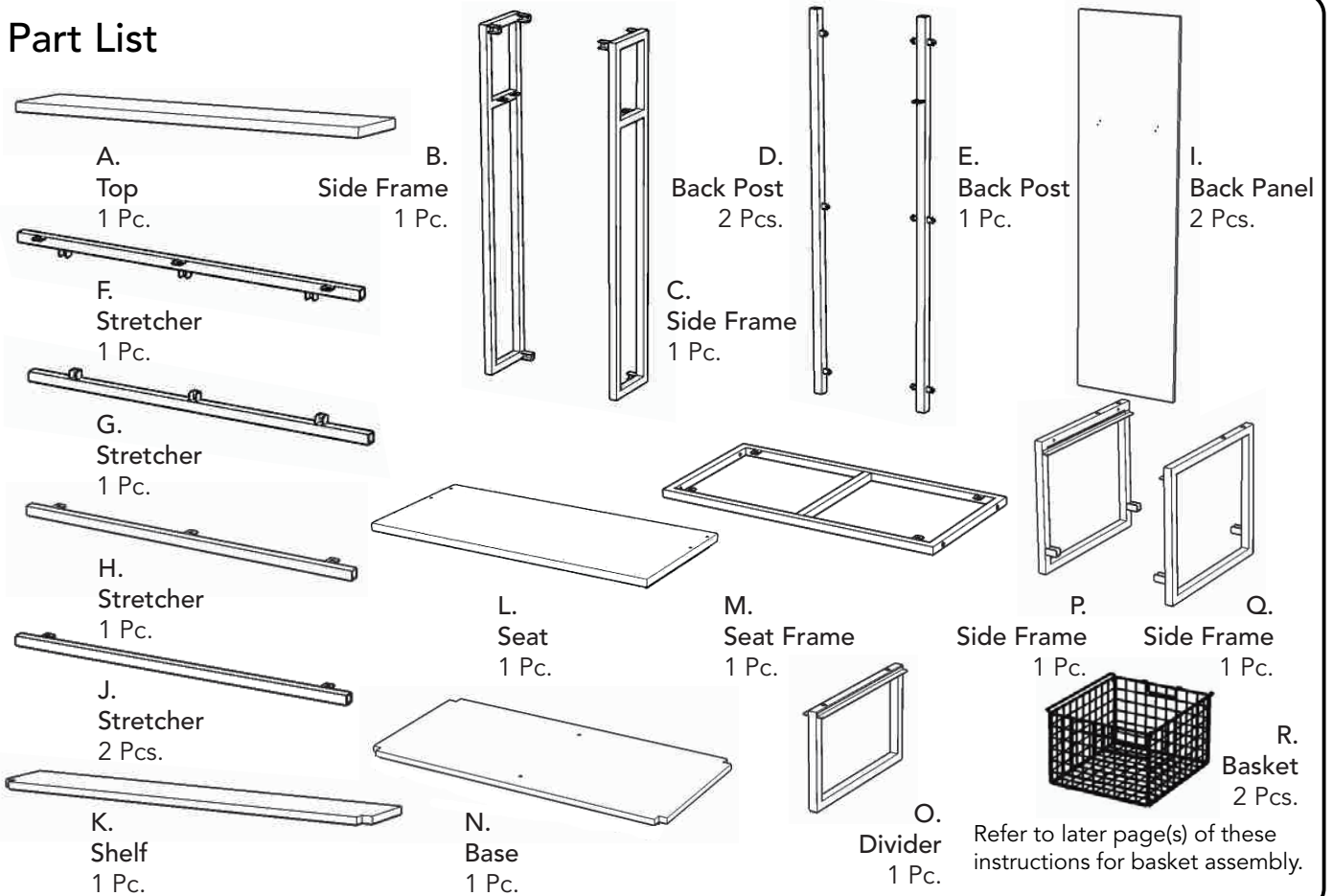
Carefully remove all the parts from the carton and place them individually on a soft cloth to prevent scratches or other damage.

Carefully and strictly follow these assembly instructions to ensure a completed product as designed.

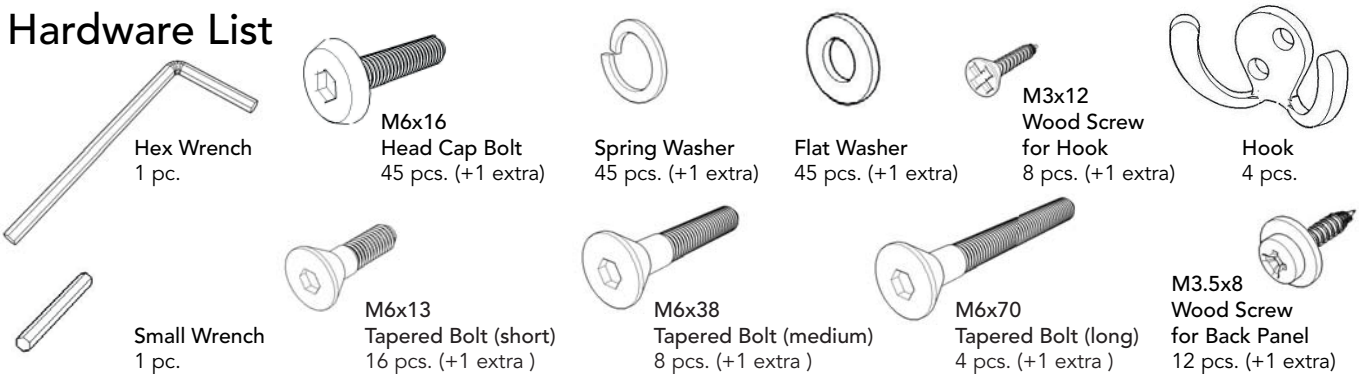
Do not use power tools above 8 volts to assemble.



Part List



Hardware List



Tool(s) required for assembly: Phillips screwdriver, Level, Drill (8 volts or less), 3/8" Drill Bit

Assembly Instructions 2/7

IMPORTANT

- Use a soft cloth between these parts and the floor.
- Do not use power tools above 8 volts to assemble.
- Do not tighten all the bolts until each part is properly assembled.
- The unit must be level to work properly. Use the included adjustable levelers to level.
- Keep Hex Wrench in a safe place as the bolts may need to be tightened up in the future.

STEP 1

Attach Stretchers (F) and (G) to Back Posts (D) and (E) with Flat Washers, Spring Washers and Head Cap Bolts, tightening the bolts only half way. (See Figure 1)

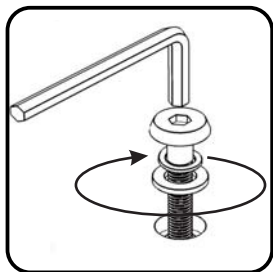


Figure 1

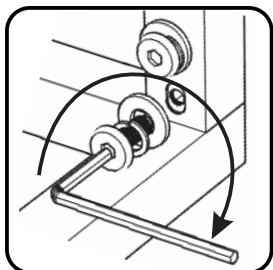
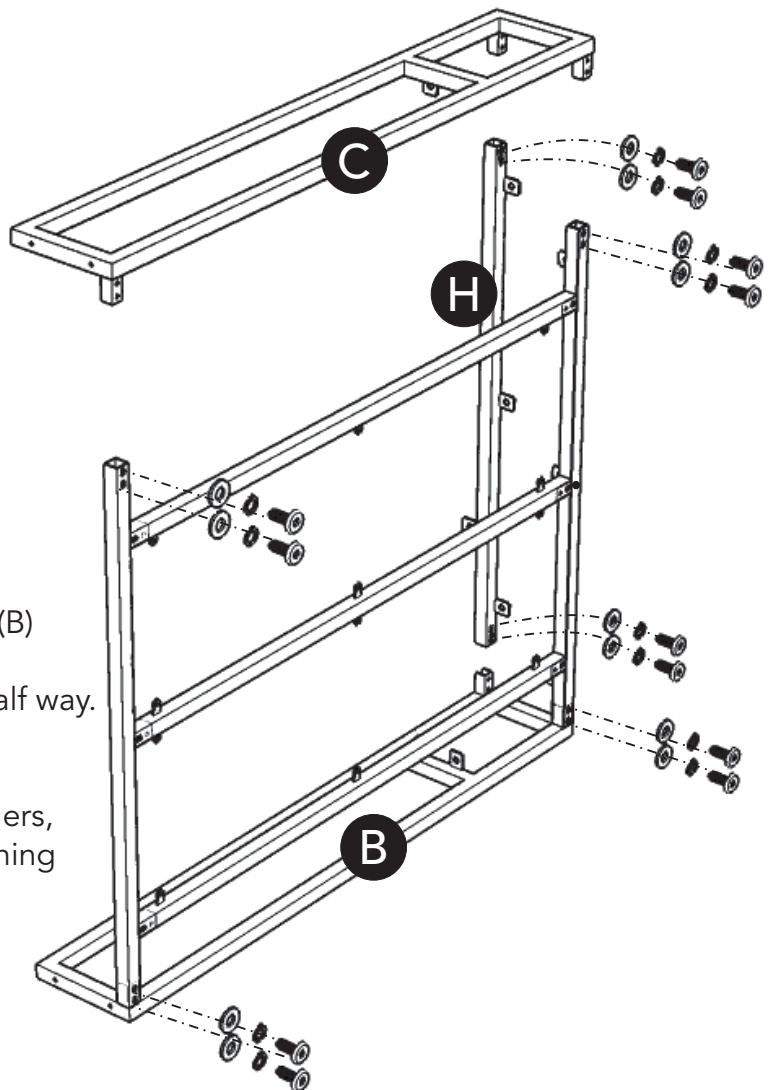
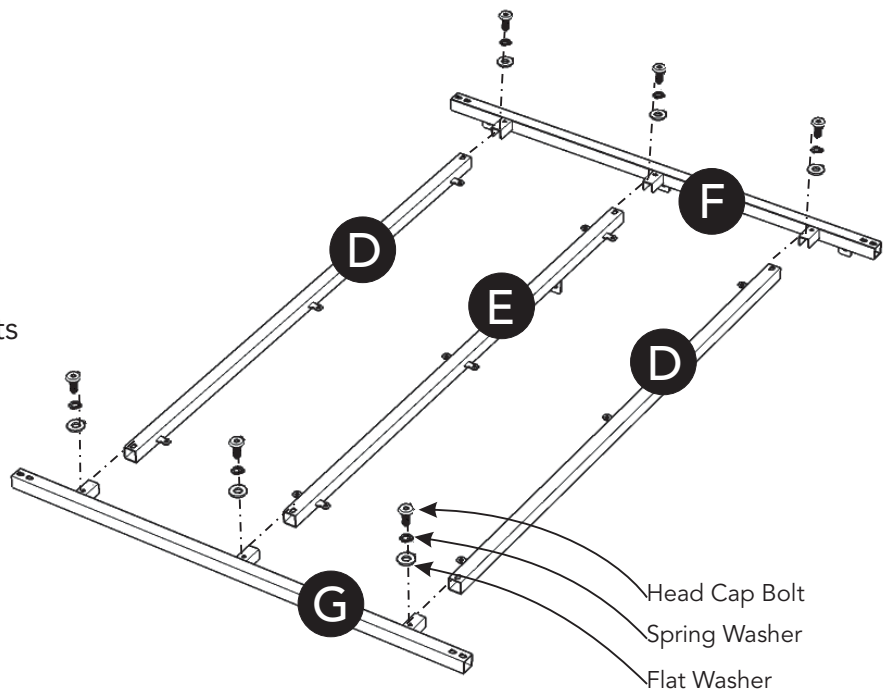


Figure 2

STEP 2

Attach unit and Stretcher (H) to Side Frame (B) with Flat Washers, Spring Washers and Head Cap Bolts, tightening the bolts only half way. (See Figure 2)

Attach Side Frame (C) to unit with Flat Washers, Spring Washers and Head Cap Bolts, tightening the bolts only half way.



Assembly Instructions 3/7

STEP 3

Slide Back Panels (I) into position.

Attach Top (A) and Shelf (K) to unit with Flat Washers, Spring Washers and Head Cap Bolts, tightening the bolts only half way.

Tighten all bolts used in all steps.

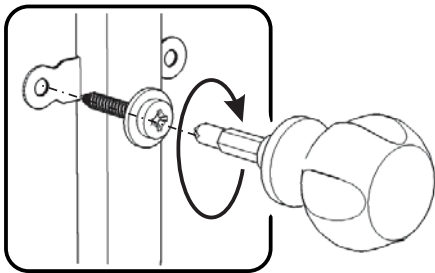
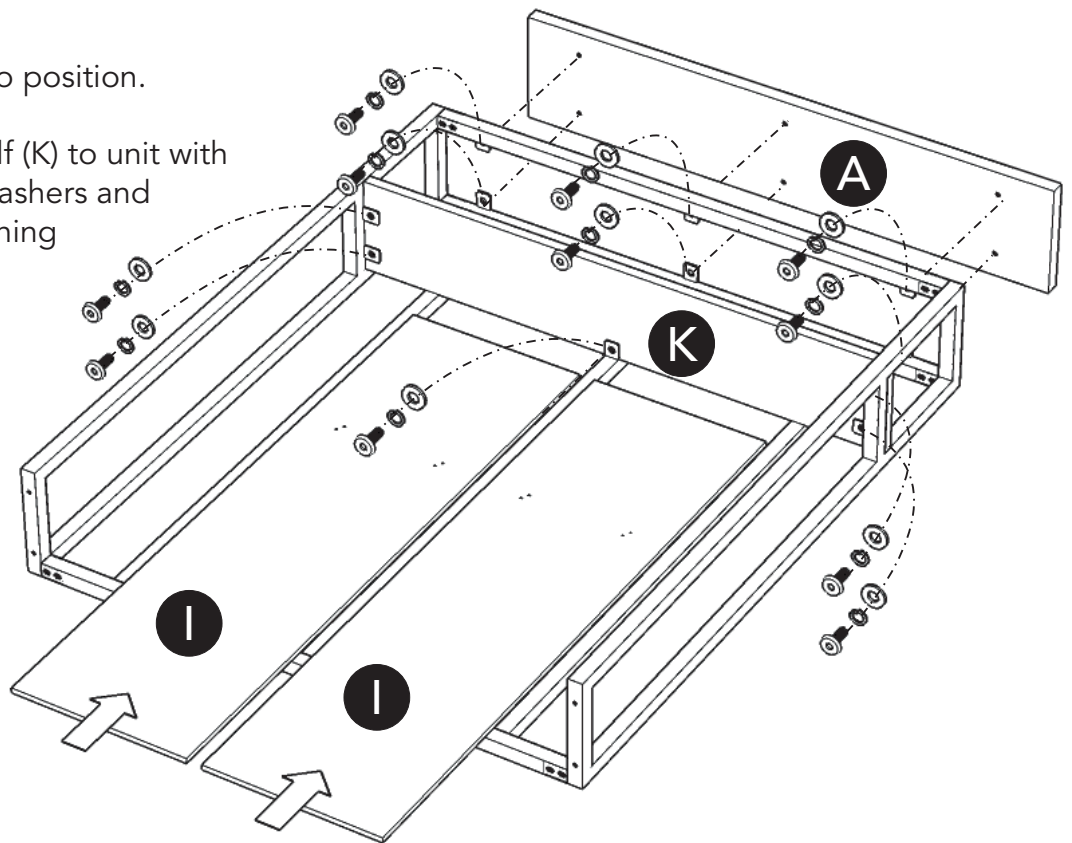
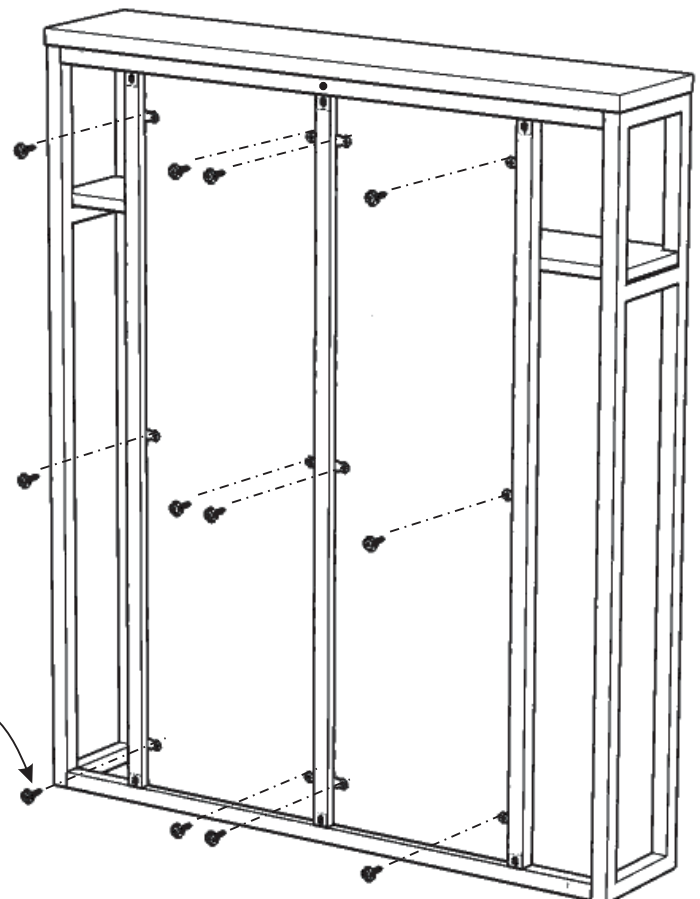


Figure 3



STEP 4

Turn the unit to its' upright position.

Attach Back Panels (I) to unit by inserting Wood Screws for Back Panel into the pre-drilled holes. (See Figure 3)

Assembly Instructions 4/7

STEP 5

Attach Stretchers (J) and Seat Frame (M) to Side Frame (Q) with Flat Washers, Spring Washers, Head Cap Bolts and Tapered Bolts (medium), tightening the bolts only half way. (See Figure 4)

Attach Side Frame (P) to unit with Flat Washers, Spring Washers, Head Cap Bolts and Tapered Bolts (medium).

Tighten all bolts used in this step.

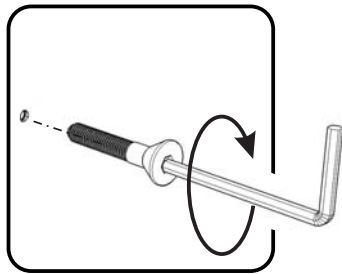
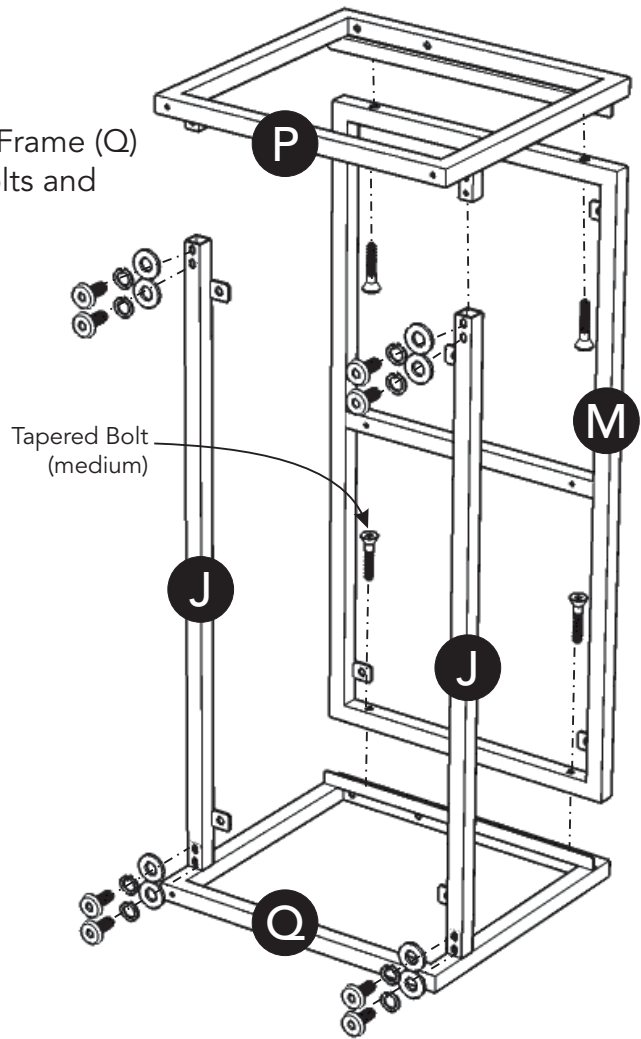


Figure 4

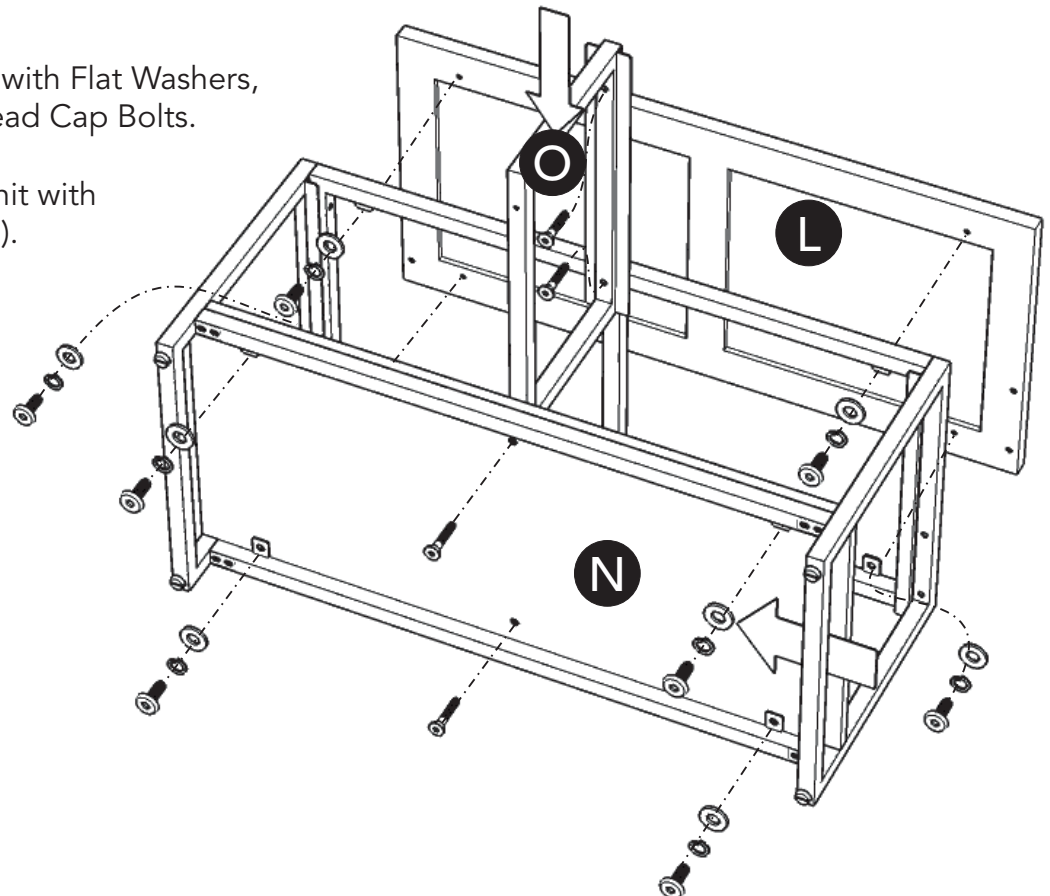


STEP 6

Attach Base (N) to unit with Flat Washers, Spring Washers and Head Cap Bolts.

Attach Divider (O) to unit with Tapered Bolts (medium).

Attach Seat (L) to unit with Flat Washers, Spring Washers and Head Cap Bolts.



Assembly Instructions 5/7

Basket (R)

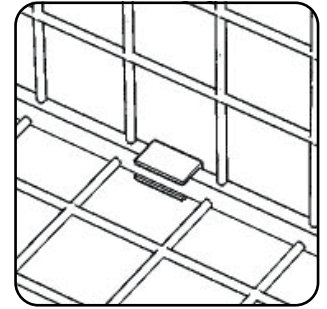
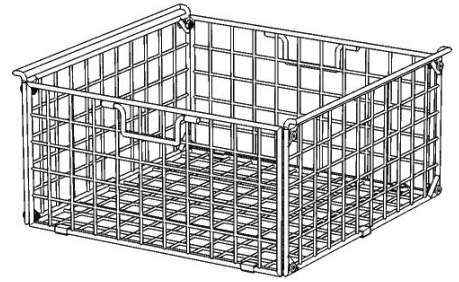
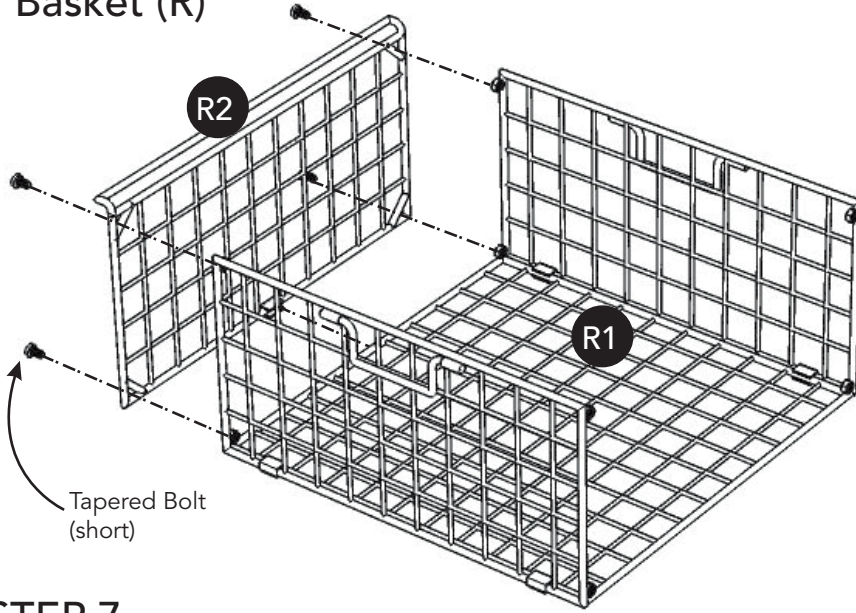


Figure 5

STEP 7

Attach Basket Side (R2) to Basket Unit (R1) with clips and Tapered Bolts (short). (See Figures 5 and 6)

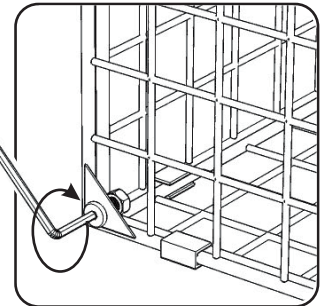
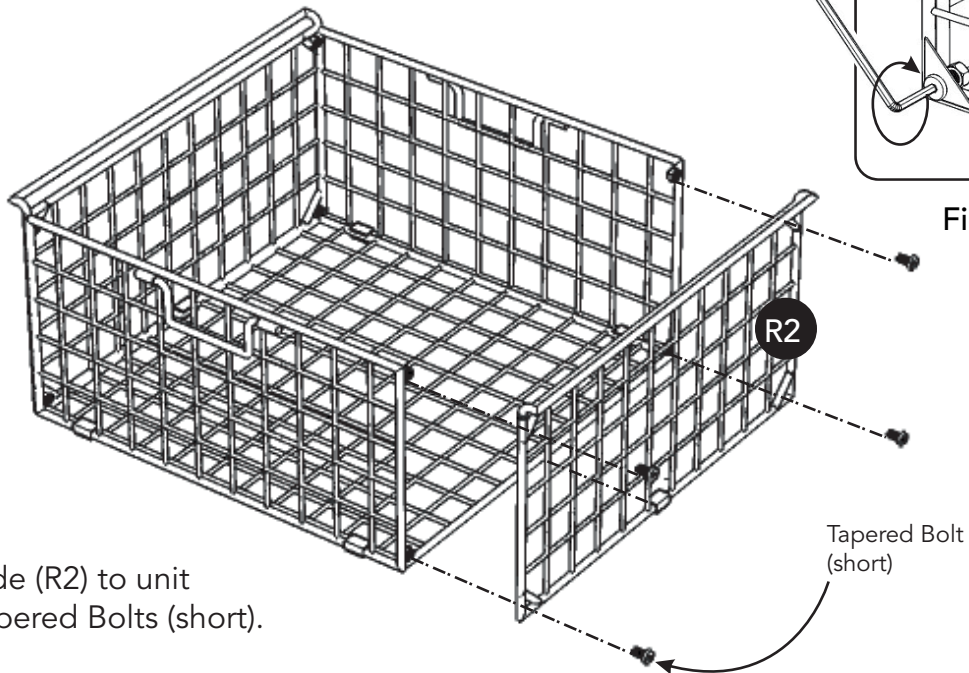


Figure 6

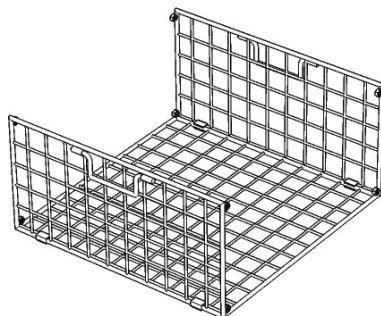
STEP 8

Attach Basket Side (R2) to unit with clips and Tapered Bolts (short).

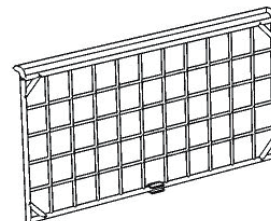


Part List

R1.
Basket Unit
2 pcs.



R2.
Basket Side
4 pcs.



Assembly Instructions 6/7

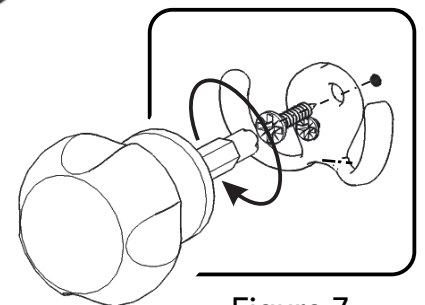
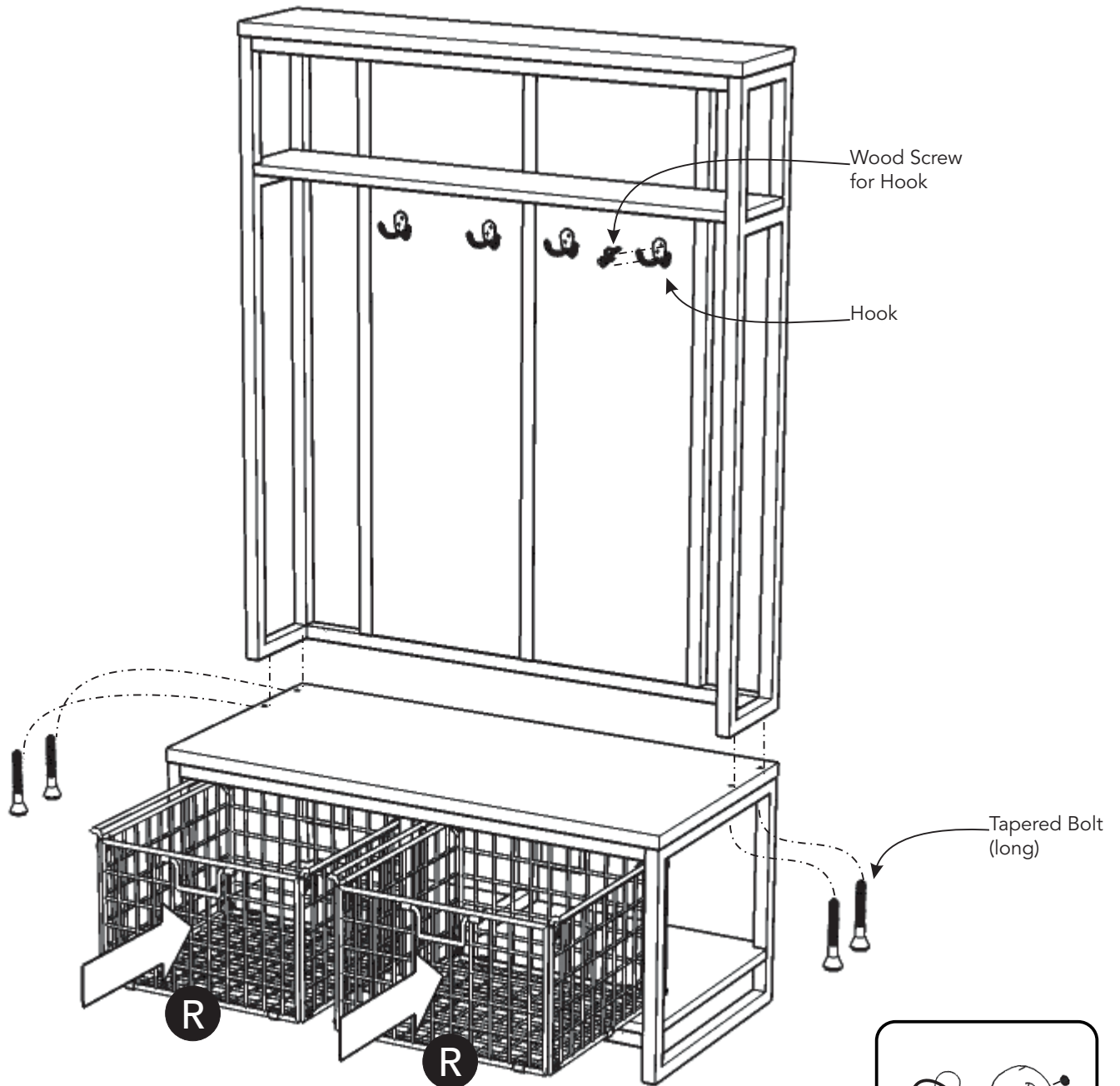


Figure 7

STEP 9

Attach unit from Step 4 to unit from Step 6 with Tapered Bolts (long).

Attach Hooks to unit by inserting Wood Screws for Hook into the pre-drilled holes of back panels. (See Figure 7)

Slide Baskets (R) into position.

To level the unit, adjust the adjustable levers on the bottom of unit. (See Figure 8)

Note: Unit must be level to work properly.

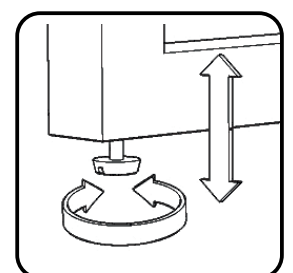


Figure 8

Assembly Instructions 7/7

IMPORTANT

- To help reduce the risk of the unit tipping over, the Tip-over Restraint must be installed following these instructions exactly.

STEP 10

Place unit at desired location.

Drill a 3/8" hole in wall in-line with the pre-drilled hole at top of unit.

Move unit.

Insert Anchor into the wall hole and attach Bracket with Wall Screw.

Attach Bracket at pre-drilled hole at top of unit with Machine Screw.

Move unit back into place.

Slide Tip-over Restraint through Bracket on wall and Bracket on unit.
(See Figure 9)

Put tie end of Tip-over Restraint into lock end of Tip-over Restraint and pull until tight.

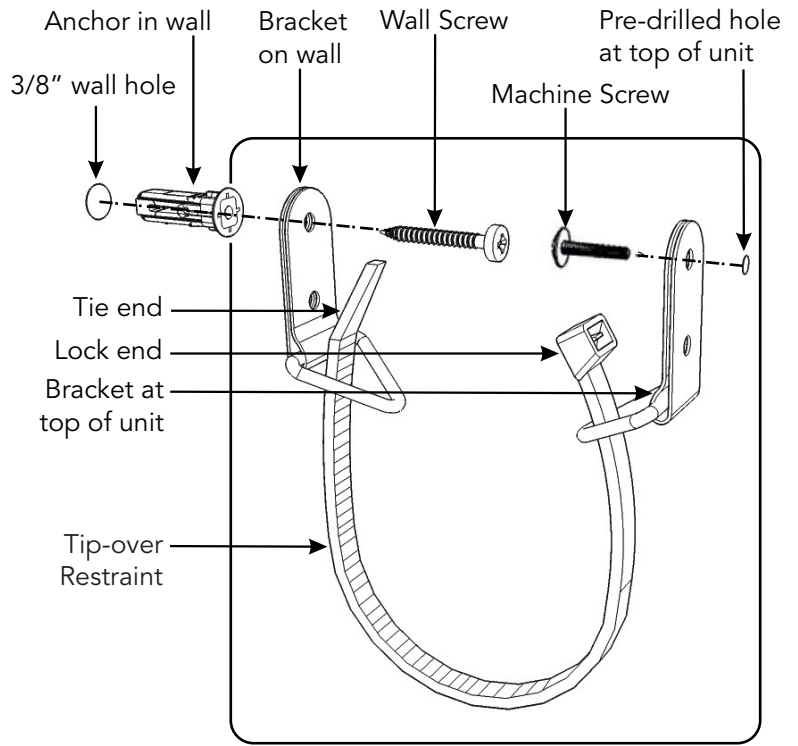
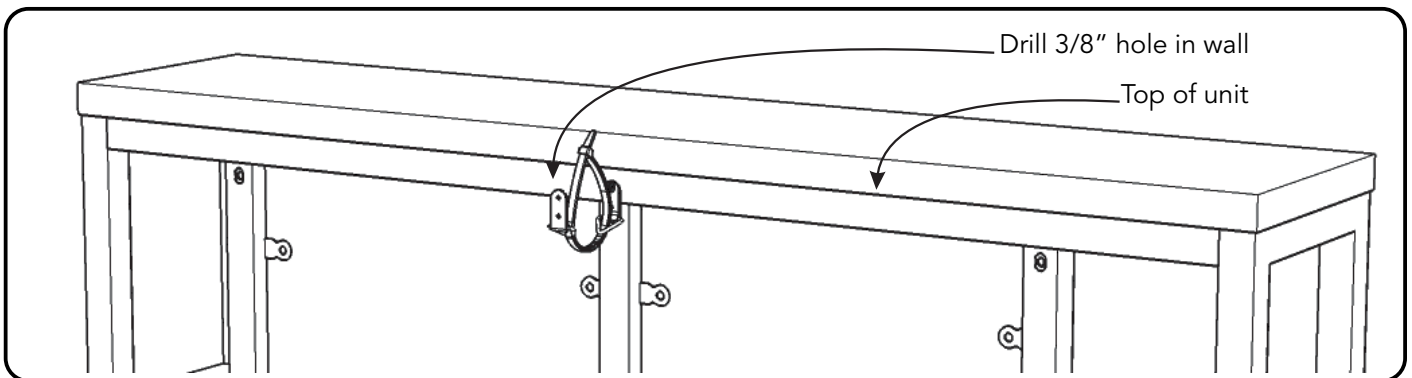
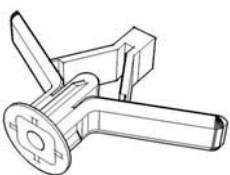


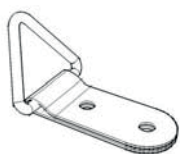
Figure 9



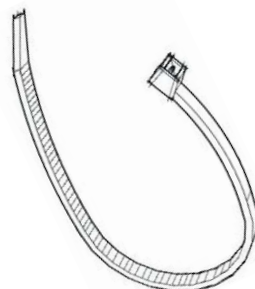
Hardware List



Anchor
1 pc. (+1 extra)



Bracket
2 pcs. (+1 extra)



Tip-over Restraint
1 pc. (+1 extra)



M3.5x40
Wall Screw
1 pc. (+1 extra)



M4x10
Machine Screw
1 pc. (+1 extra)

CARE INSTRUCTIONS

NEVER

allow liquids to remain on furniture.
Absorption causes parts to warp
and split and finishes to delaminate.

NEVER

use glass cleaners on
finished furniture. Ammonia
chemically attacks the finish.



Do not use power tools
above 8 volts to assemble.

**PREVENT
CRACKING**



Do not place
in direct sunlight.

**PREVENT
FADING**



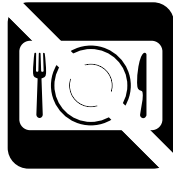
Do not write
directly on surface.

**PREVENT
MARKING**



Do not place hot
objects on surface.

**PREVENT
FINISH DAMAGE**



Do not use rubber
based placemats.

**PREVENT
DISCOLORING**



Do not use commercial
waxes and polishes.

**PREVENT
YELLOWING**

CLEAN

with a soft cloth moistened
in lukewarm soap and water.
Buff with a dry clean cloth.

