







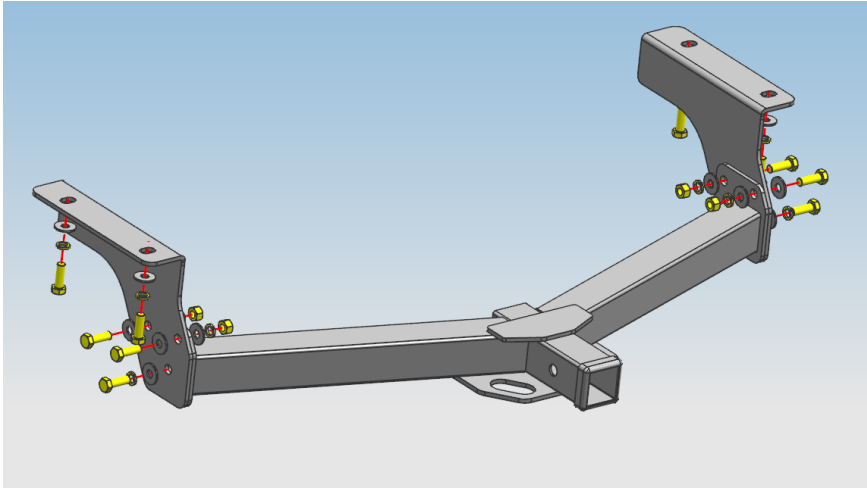


Description	QTY	Illustration	Description	QTY	Illustration
Trailer frame body	1		M12*35 Hexagon bolts	6	
Connecting bracket left	1		M12*35*1.25 Hexagon bolts	4	
Connecting bracket right	1		φ12*25 Flat washers	14	
M12 Hexagon nuts	4		φ12 Lock washers	10	

Tools Required

Torque Wrench, 18mm Socket, 16mm Socket, 13mm Socket, Flat Blade Screw Driver /Retainer clip puller, Ratchet



Before Installation

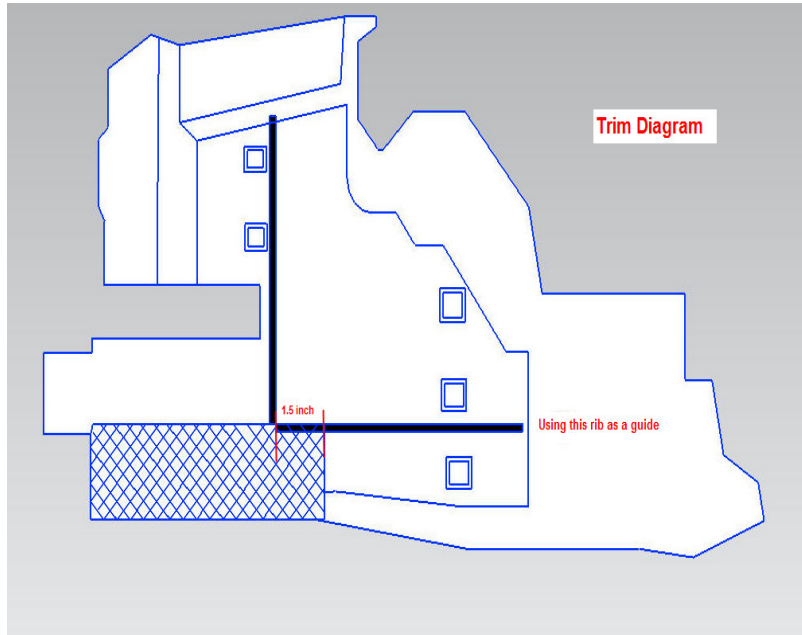
REMOVE CONTENTS FROM BOX AND VERIFY ALL PARTS ARE PRESENT. FAILURE TO IDENTIFY DAMAGE BEFORE INSTALLATION COULD LEAD TO A REJECTION OF ANY CLAIM. IF ANY DAMAGE FOUND, PLEASE TAKE A PICTURE FOR THE CLAIM PURPOSE. READ INSTRUCTIONS CAREFULLY BEFORE STARTING INSTALLATION.

Warning

THE HITCH WILL HAVE A VISIBLE TOW RATING LABEL AFFIXED DIRECTLY ON THE PRODUCT. USER SHOULD NEVER EXCEED THE VEHICLE MANUFACTURER'S MAXIMUM TOW AND WEIGHT RATING REGARDLESS OF THE CAPACITY OF THE HITCH. TO PROTECT YOUR INVESTMENT, WAX THIS PRODUCT AFTER INSTALLING. REGULAR WAXING IS RECOMMENDED TO ADD A PROTECTIVE LAYER OVER THE FINISH. DO NOT USE ANY TYPE OF POLISH OR WAX THAT MAY CONTAIN ABRASIVES THAT COULD DAMAGE THE FINISH.

STEP 1

Removing the panel if present and trimming the panel based on panel trim diagram below. Removing the tie down bracket from the driver side frame rail with the 17mm socket, 8" extension and ratchet. (Trim diagram)



STEP 2

Lowering the rear exhausts isolator for ease of installation.

STEP 3

Raising hitch into position over existing weld nuts, and install the (2) 12mm x 37mm x 3mm Flat Washers, (2) 12mm Lock Washer and (2) 12mm x 35mm Hex Bolts as shown. Raising the exhaust back into location and reinstall rubber isolator. Torque hardware to 54-55 lb-ft.

(2) 12mm x 37mm x 3mm Flat Washers
(2) 12mm Lock Washer and (2) 12mm x 35mm Hex Bolts

