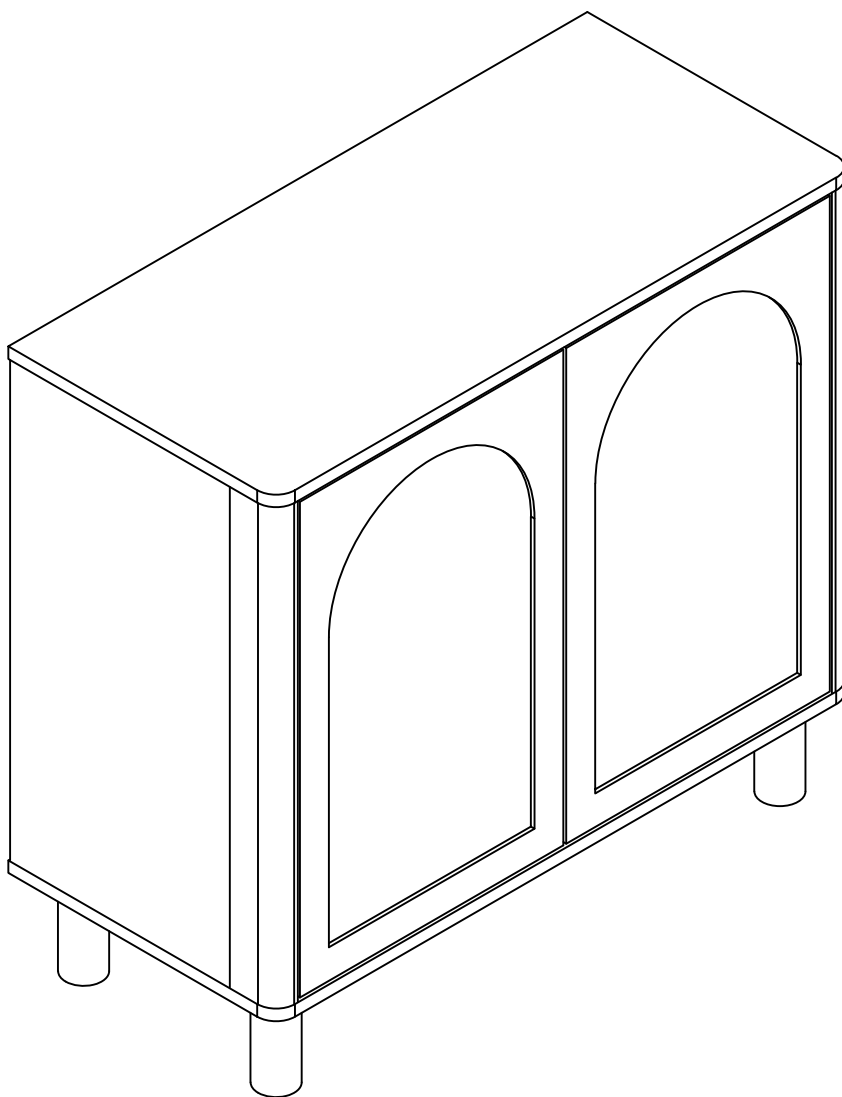


# Installation Instruction

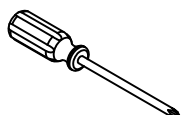


# Assembling

---

## What you need

- Use the packaging carton as a working surface to prevent product damage during assembly
- Phillips head screwdriver



## Weight Limitation

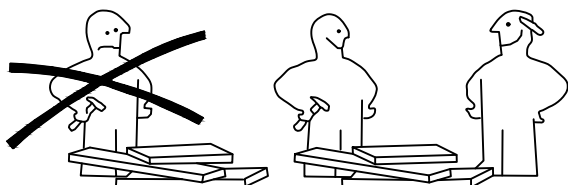


**100**

lbs table top

**| 35**

lbs per



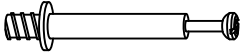
# What' included

---

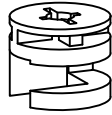
Code	Description	Qty
A	Cam Bolt M6X35MM	20
B	Cam Lock 15X10MM	20
C	Wooden Dowel M8X30MM	12
D	Screw M4X40MM	4
E	Screw M3.5X14MM	58
F	Shelf Holder	4
G	Metal connector	2
H	Shelf Holder	4
I	Door Rebound Device	2
J	The back button	12
K	Anchor	2
L	MATS	4
M	Door Rebound Device Holder	2
N	Self-adhesive hole sticker	20
O	The metal plate	4

# The Hardwares

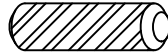
Ⓐ



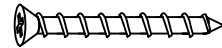
Ⓑ



Ⓒ



Ⓓ



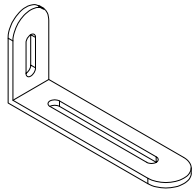
Ⓔ



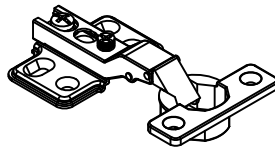
Ⓕ



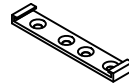
Ⓖ



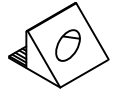
Ⓗ



Ⓘ



Ⓙ



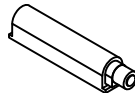
Ⓚ



Ⓛ



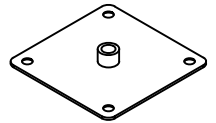
Ⓜ



Ⓝ



Ⓞ



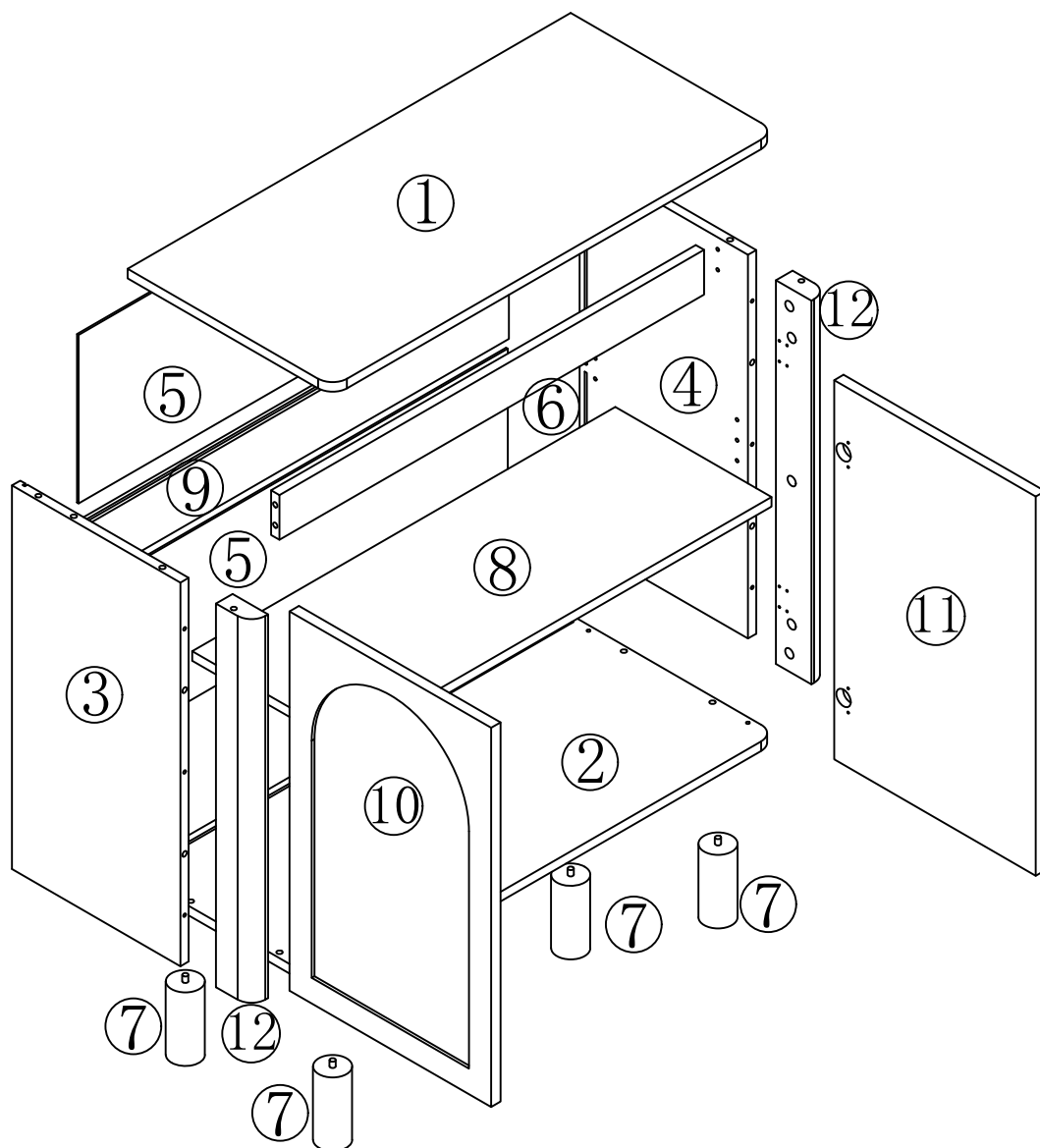
## IMPORTANT:

- 1.Do not tighten bolts / screws completely until all bolts / screws are lined up and inserted into holes.
- 2.Do not over tighten screws and bolts to avoid stripping
- 3.Please use hand tools to assemble this product,you can also use power tools(please use power tools carefully)

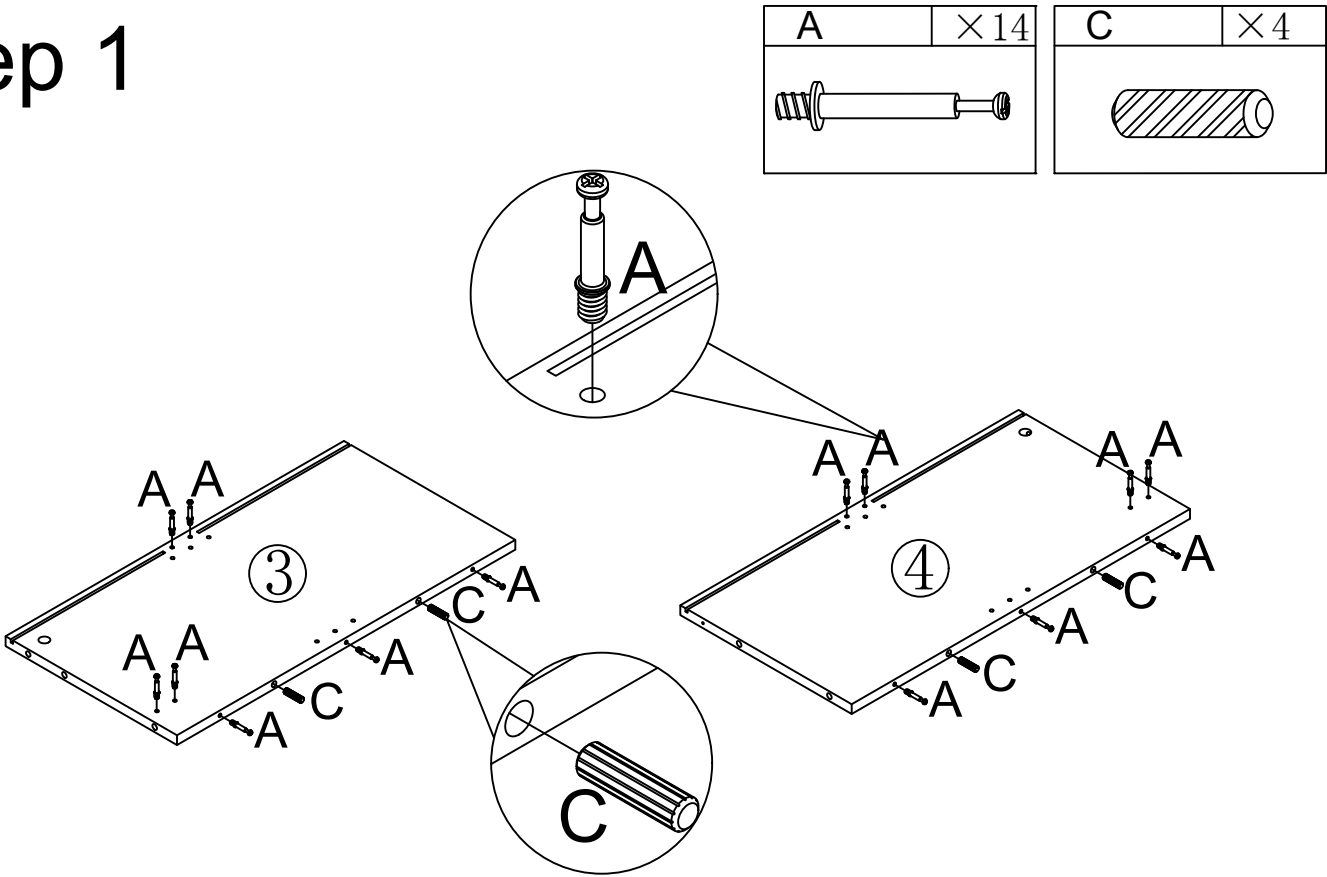
# Included Accessories

Code	Description	Qty
1	Cabinet Top	1
2	Bottom Panel	1
3	Left Side Panel	1
4	Right Side Panel	1
5	On the rear panell	2
6	Panel support plate	1
7	Solid wood feet	4
8	Movable laminate	1
9	Back reinforcement plate	1
10	Left door panel	1
11	Right door panel	1
12	Side panel trim panel	2

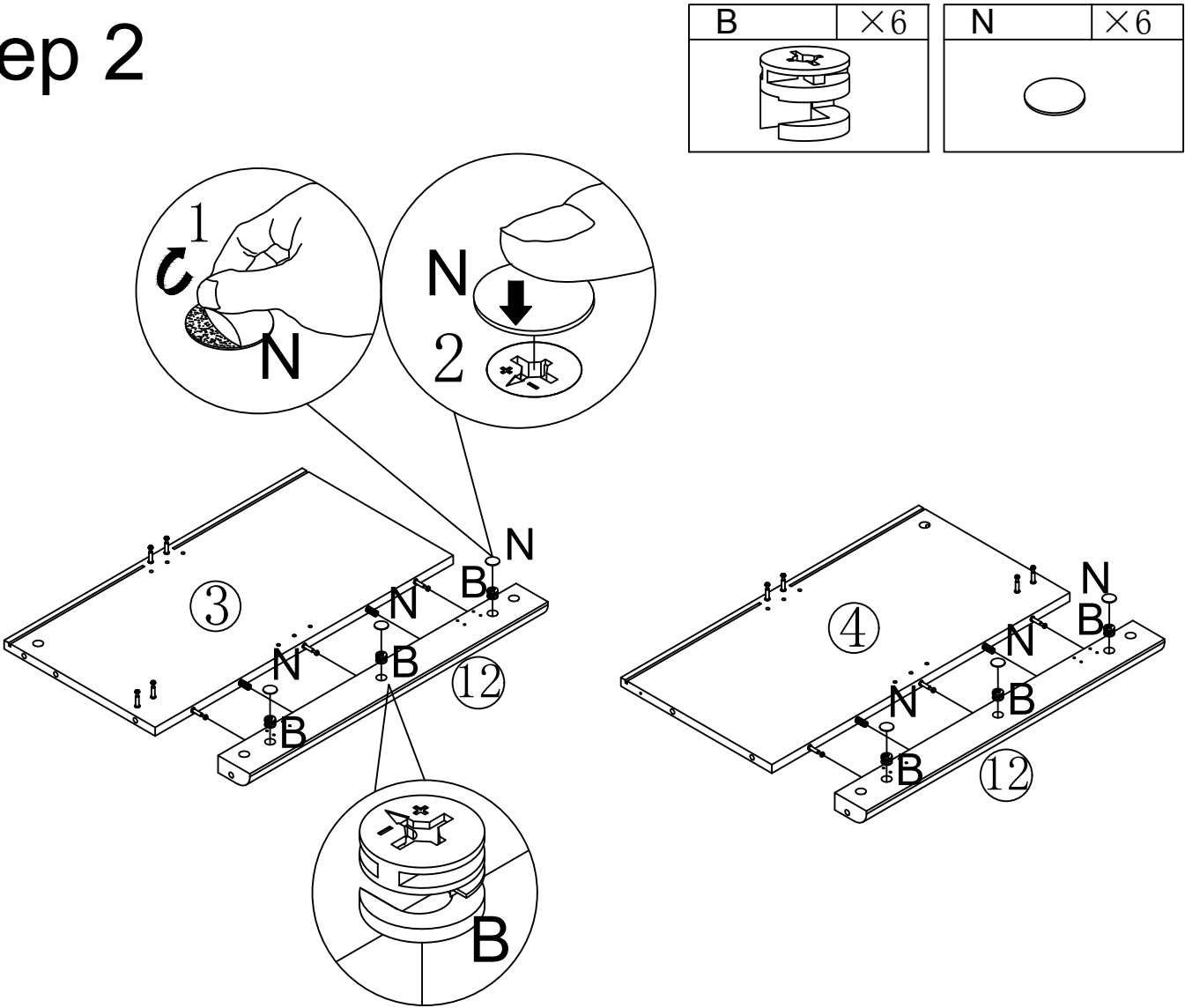
# The Accessoriess



# Step 1

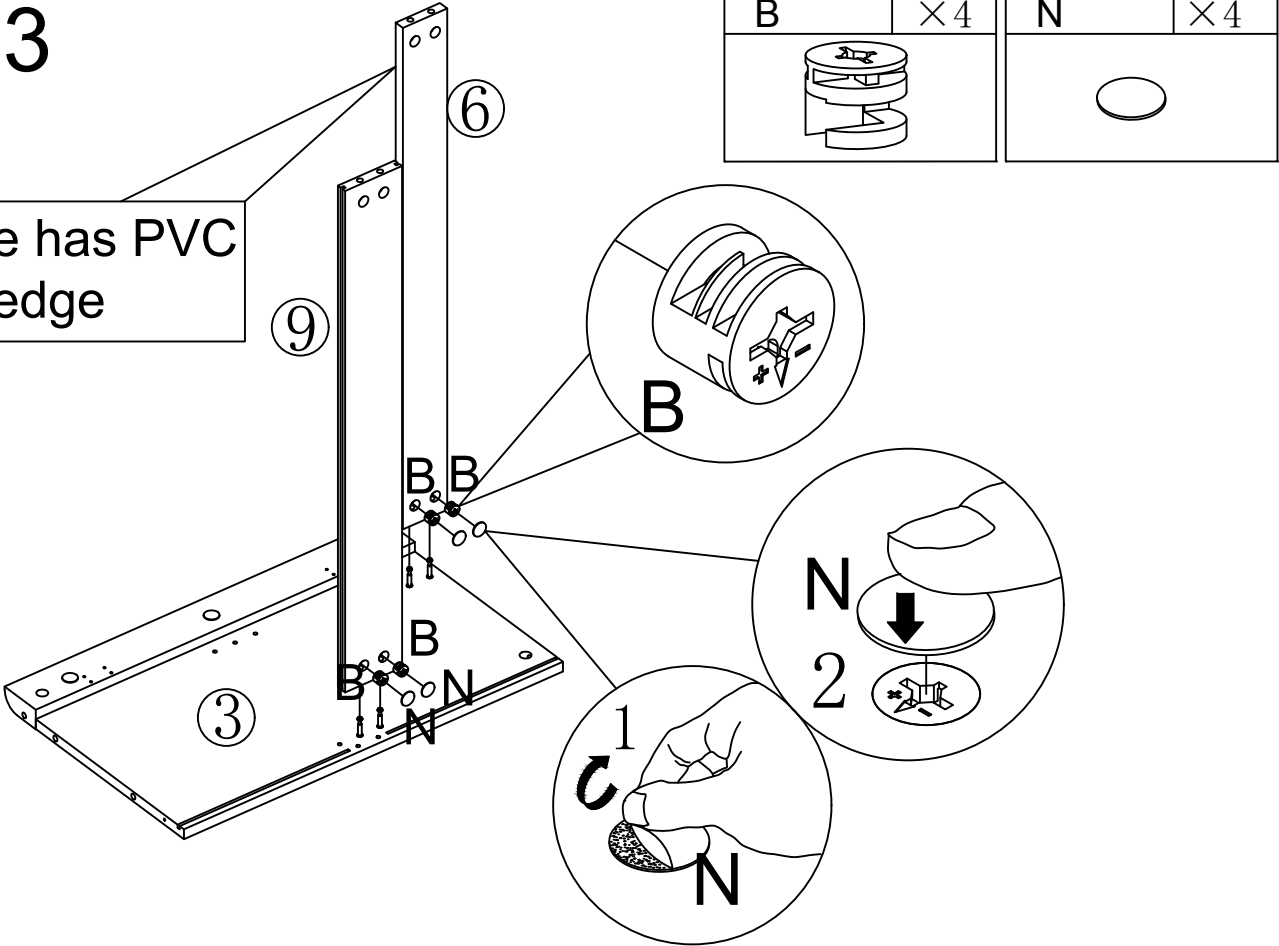


# Step 2

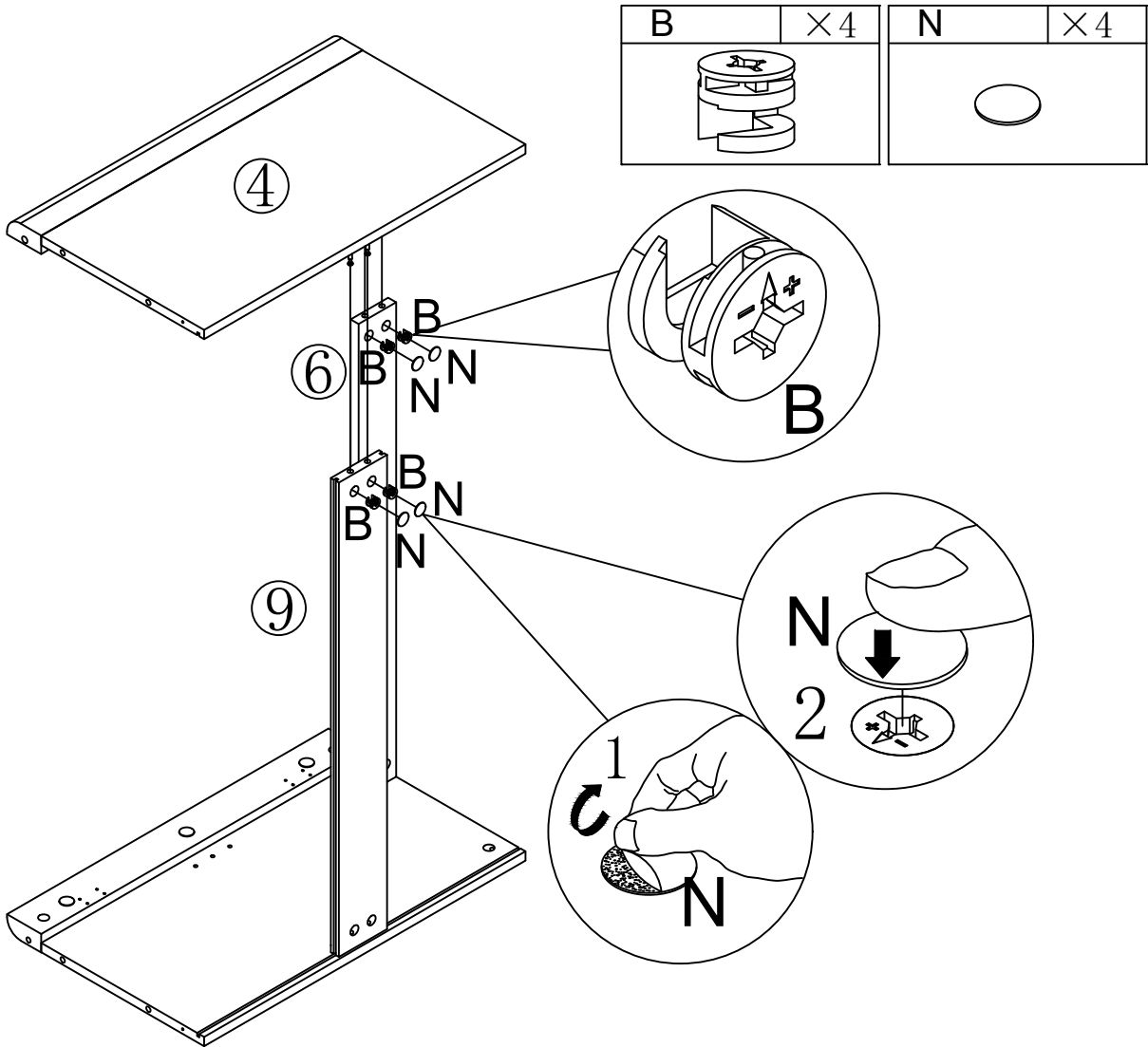


# Step 3

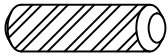
This side has PVC  
sealing edge

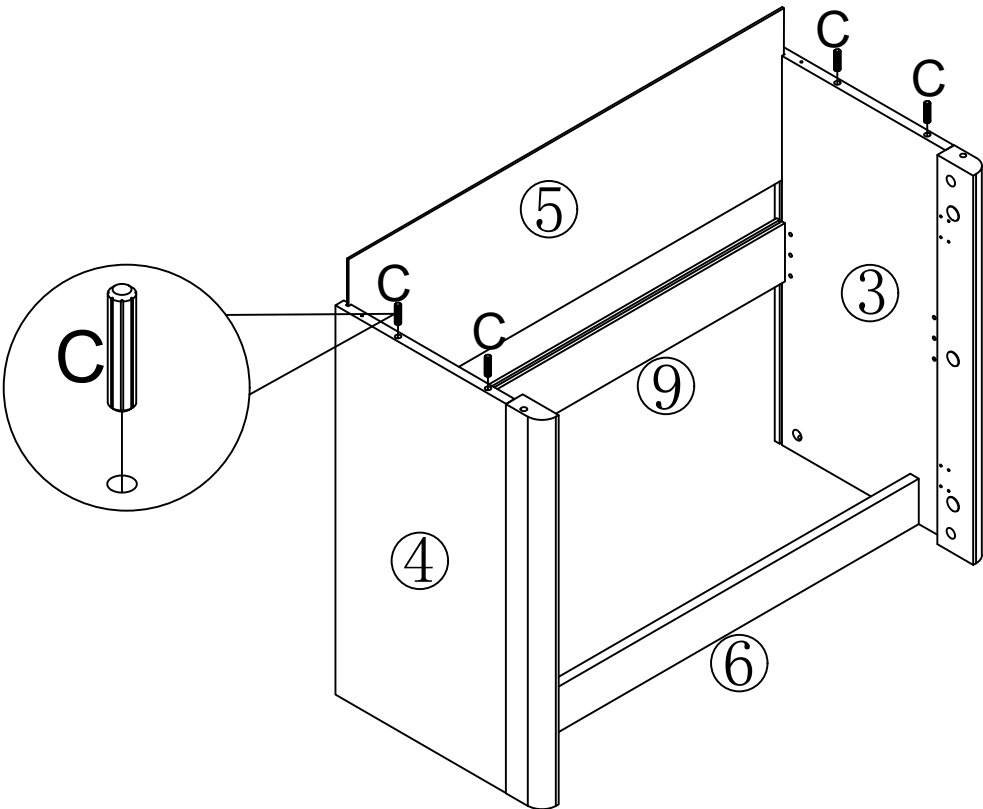


# Step 4

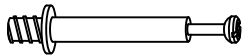


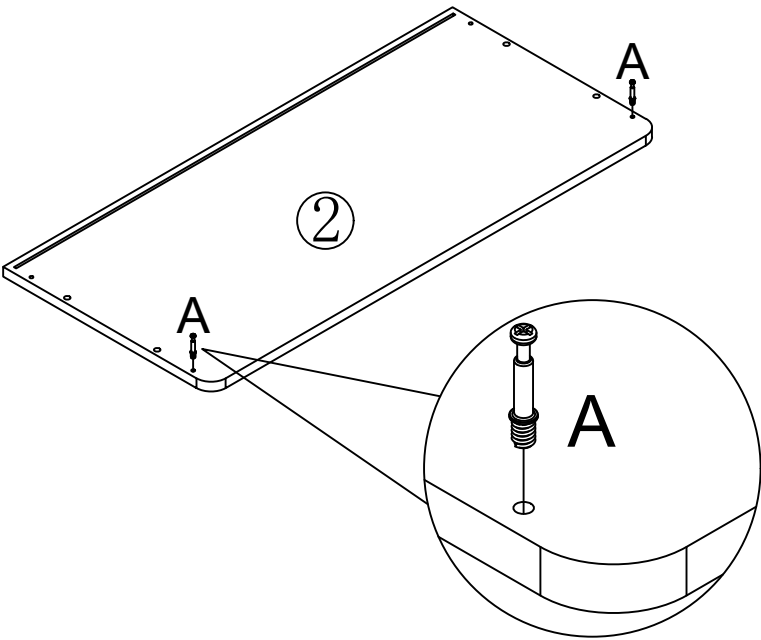
# Step 5

C	×4
	



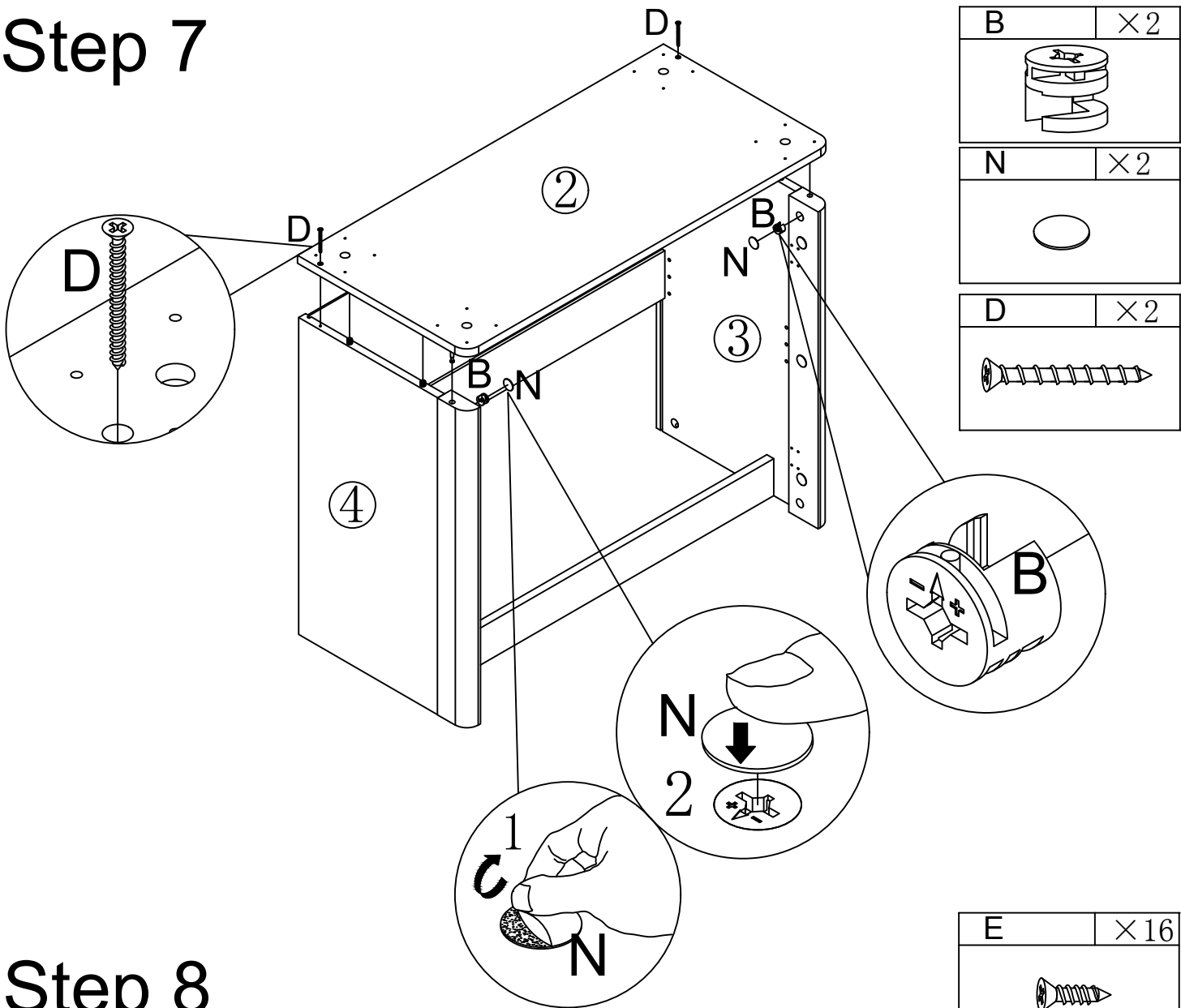
# Step 6

A	×2
	

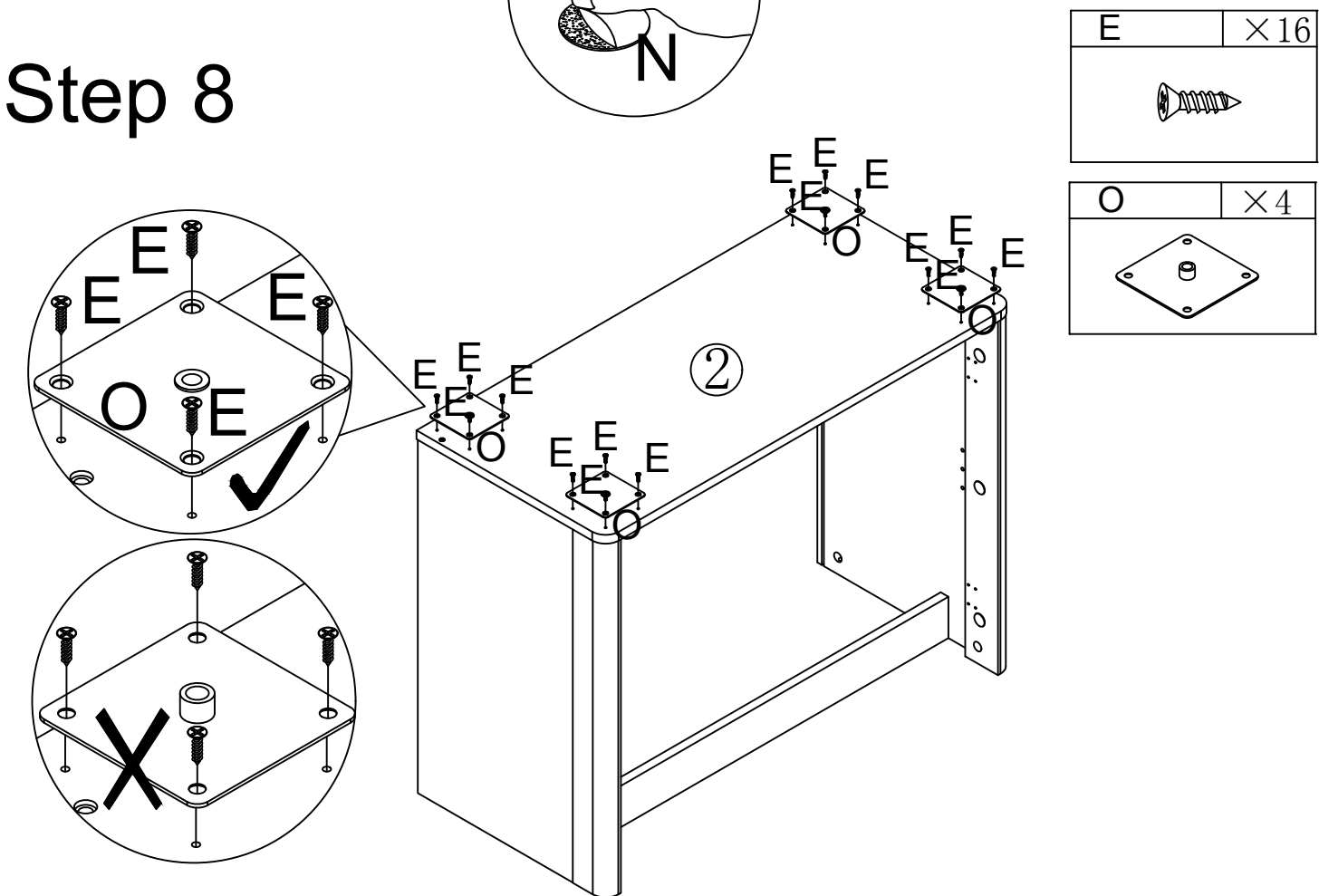




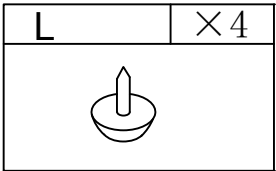
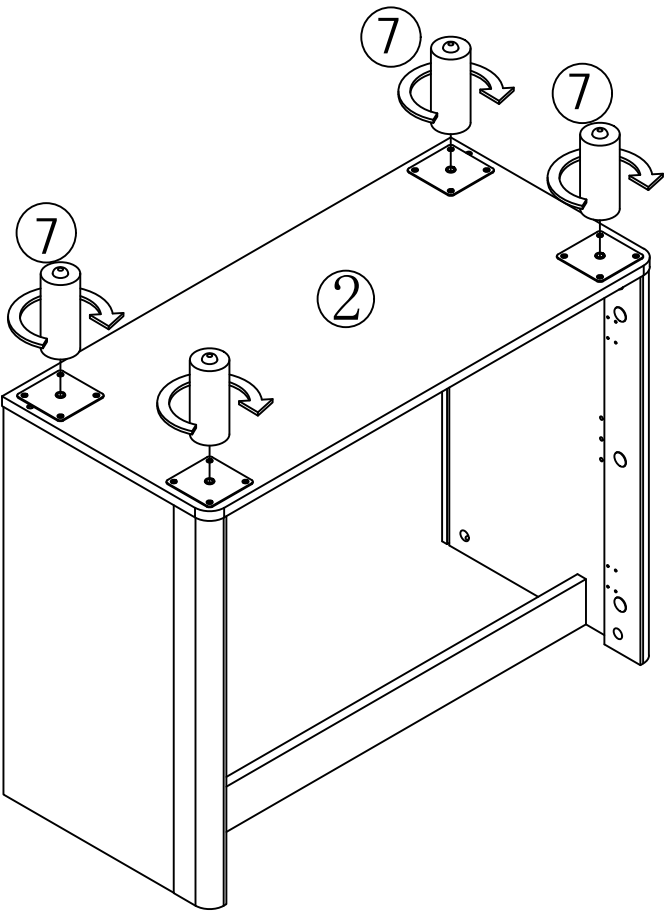
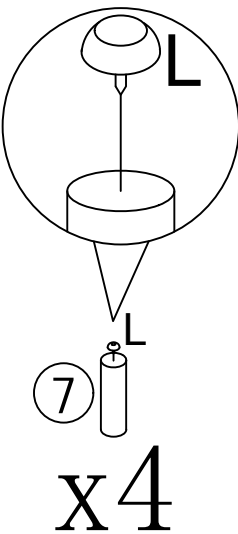
# Step 7



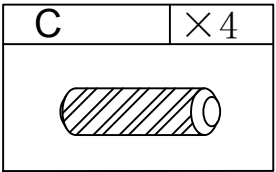
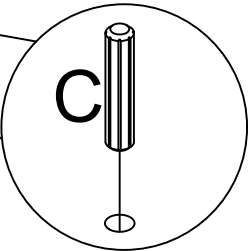
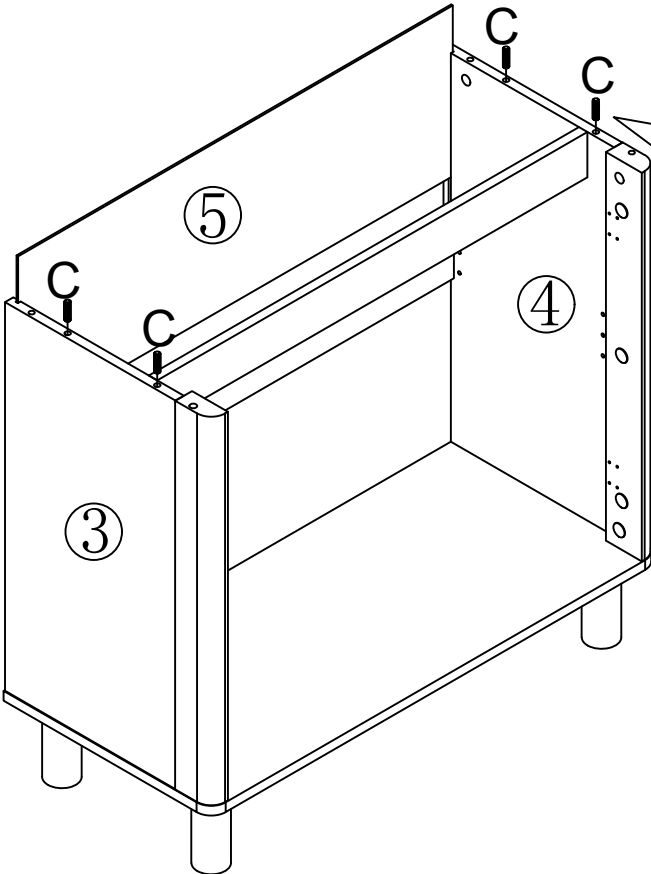
# Step 8



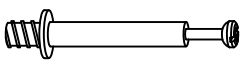

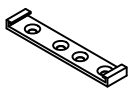
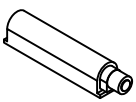
# Step 9

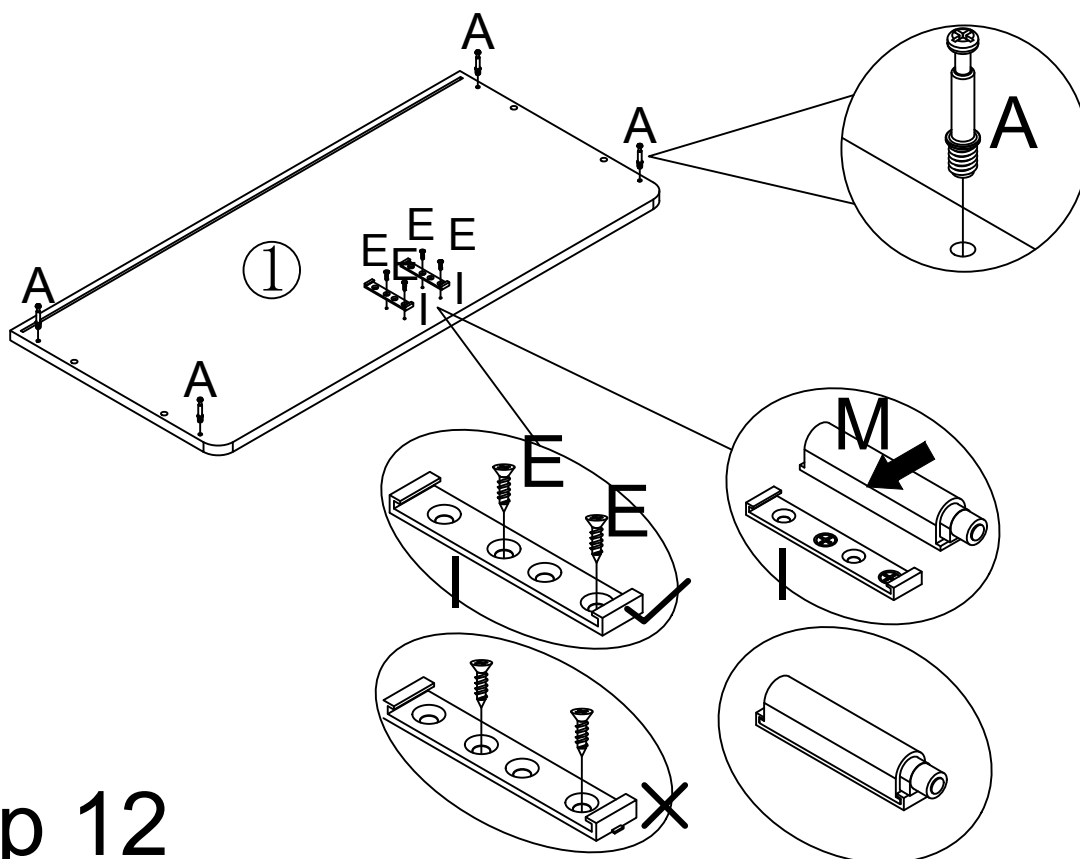


# Step 10

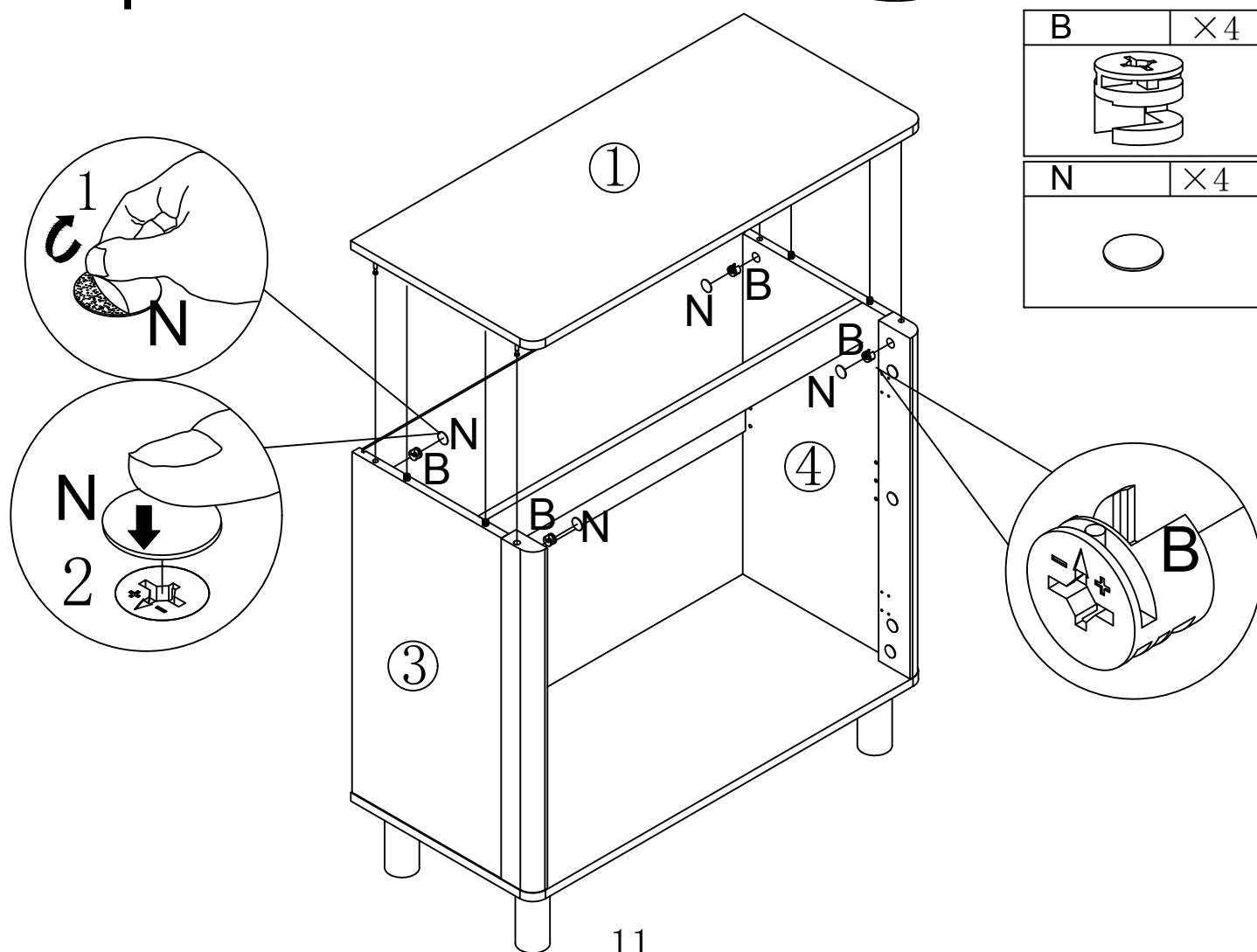


# Step 11

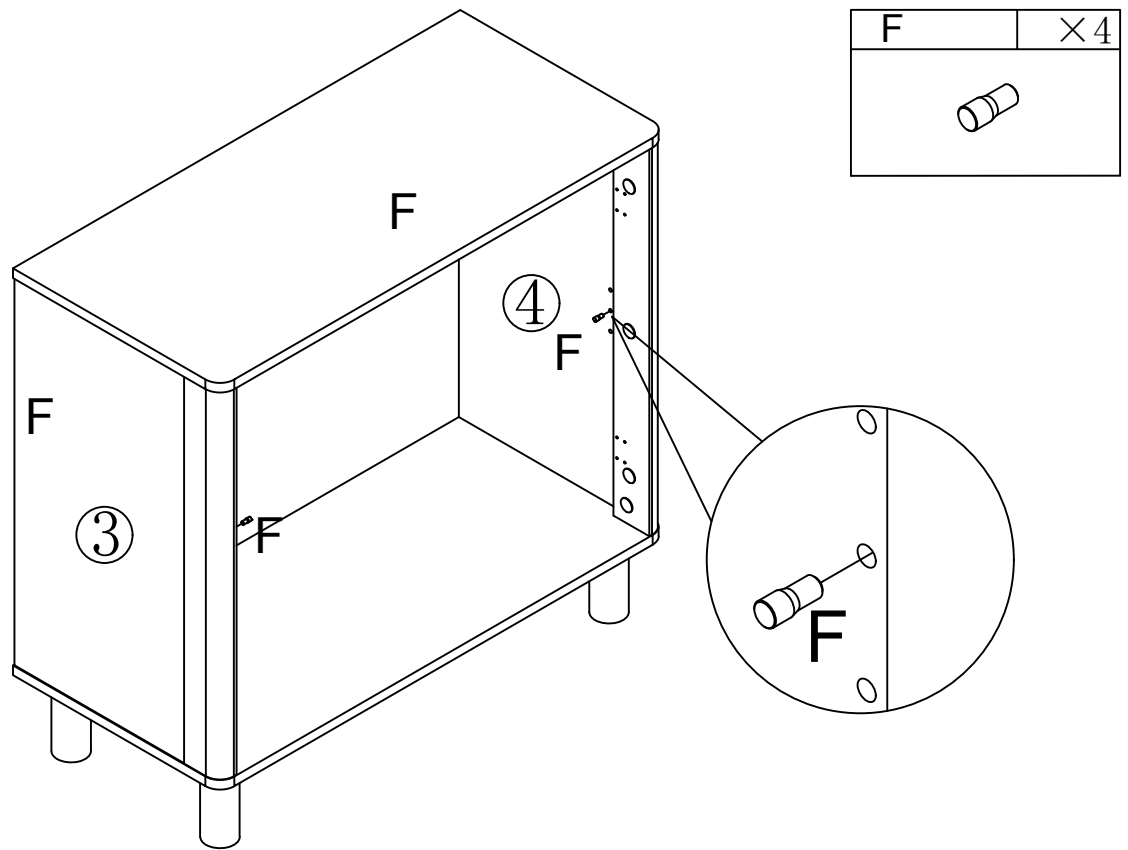
A	×4	E	×4	I	×2	M	×2
							



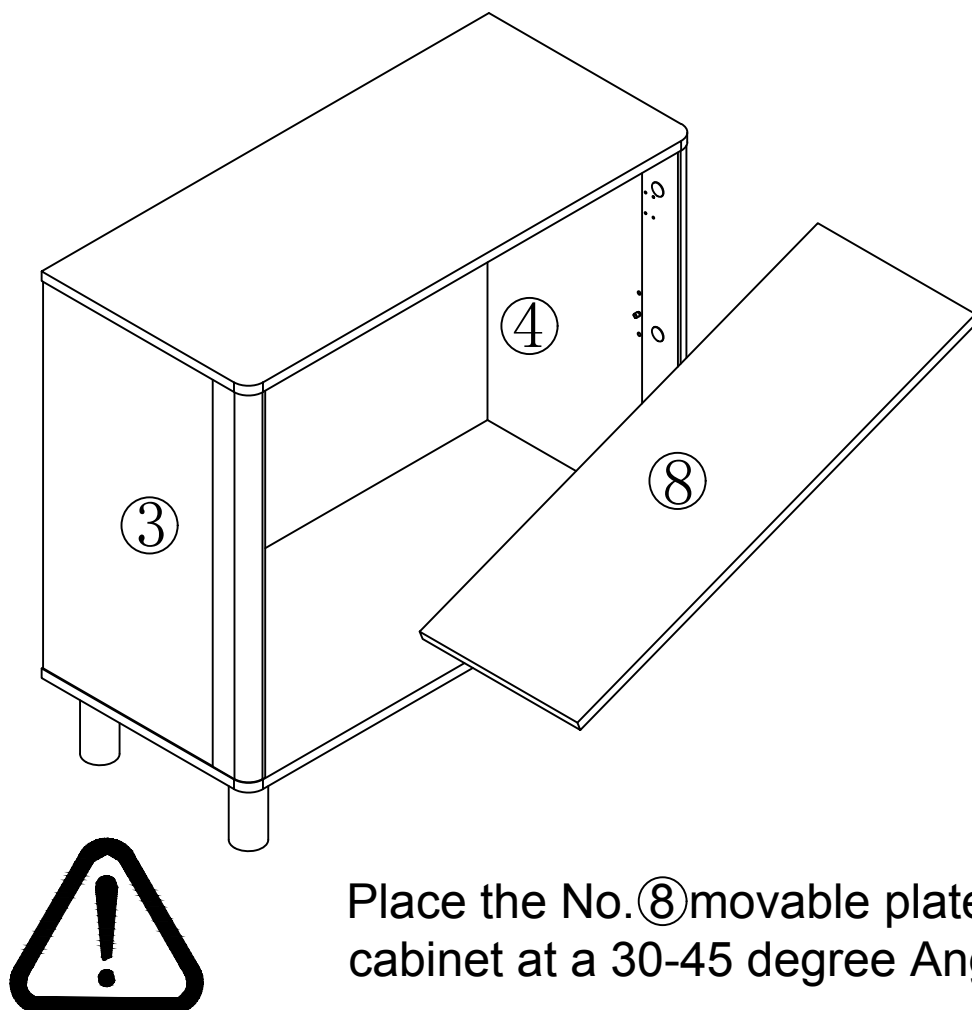
# Step 12




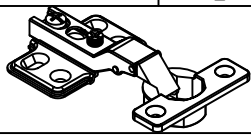
# Step 13

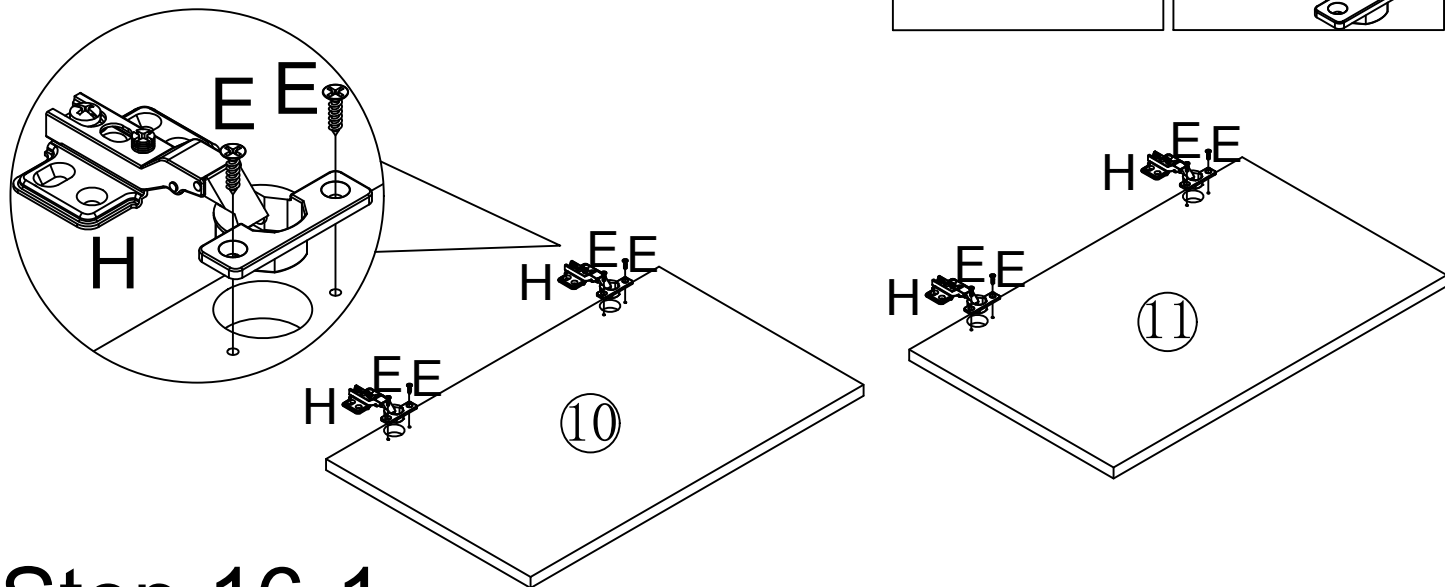


# Step 14

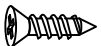


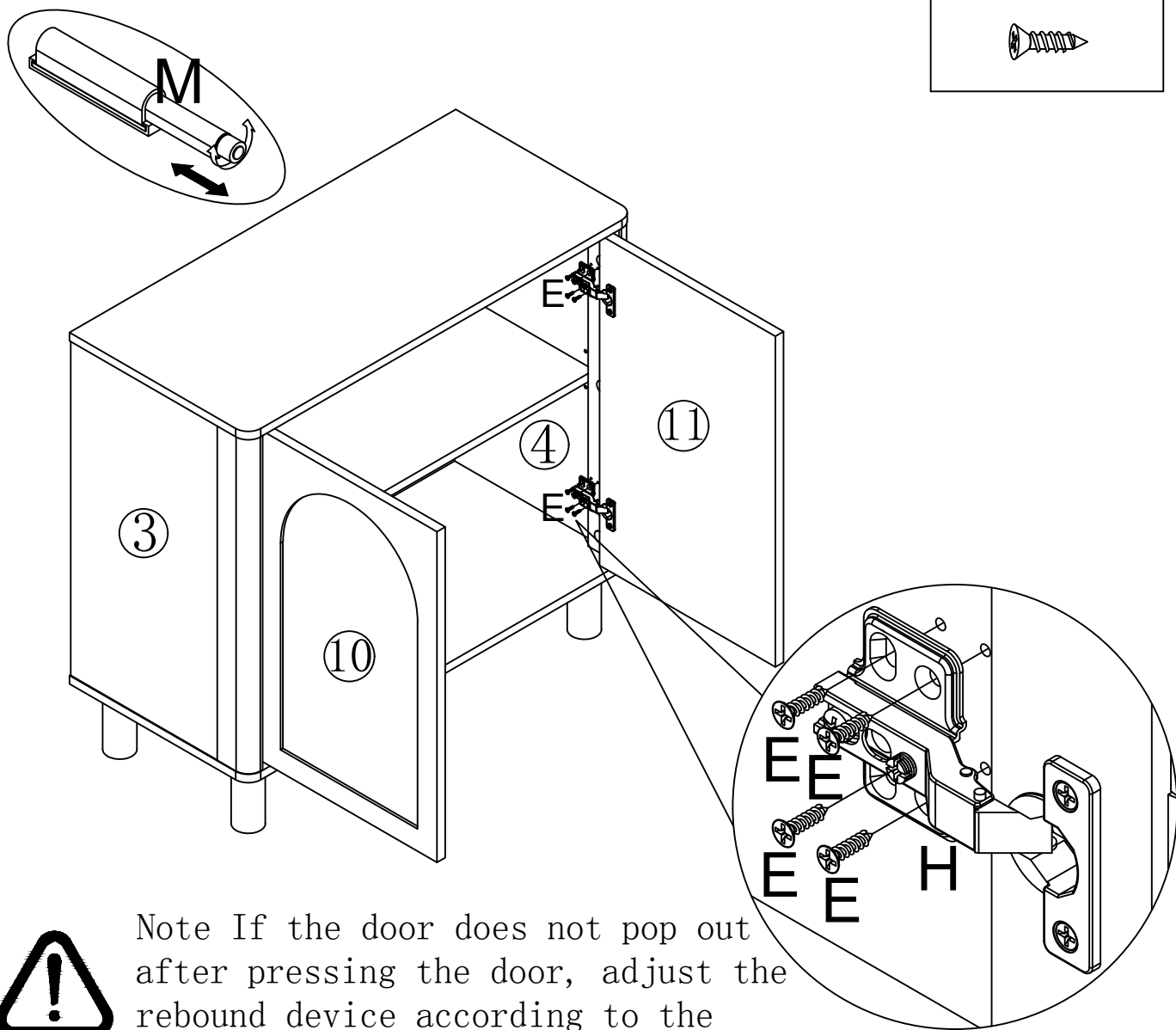
# Step 15

E	×8	H	×4
			



# Step 16-1

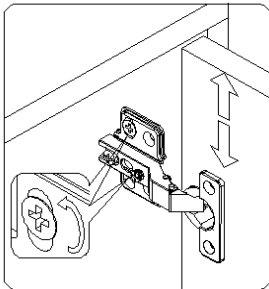
E	×16
	



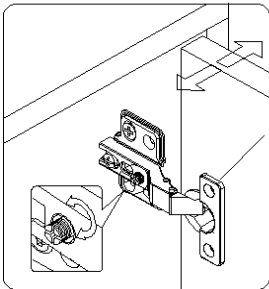
Note If the door does not pop out after pressing the door, adjust the rebound device according to the figure

# Step 16-2

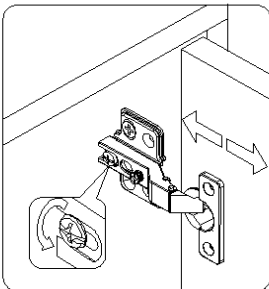
How do I get the two doors to align flat by adjusting the hinges?



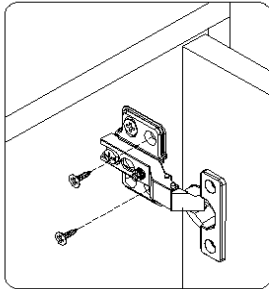
1. Adjust the screws shown in Figure 1 to adjust the door up and down.



2. Adjust the screws shown in Fig. 2 and pull the door back and forth so that it can be opened smoothly.


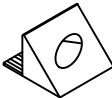


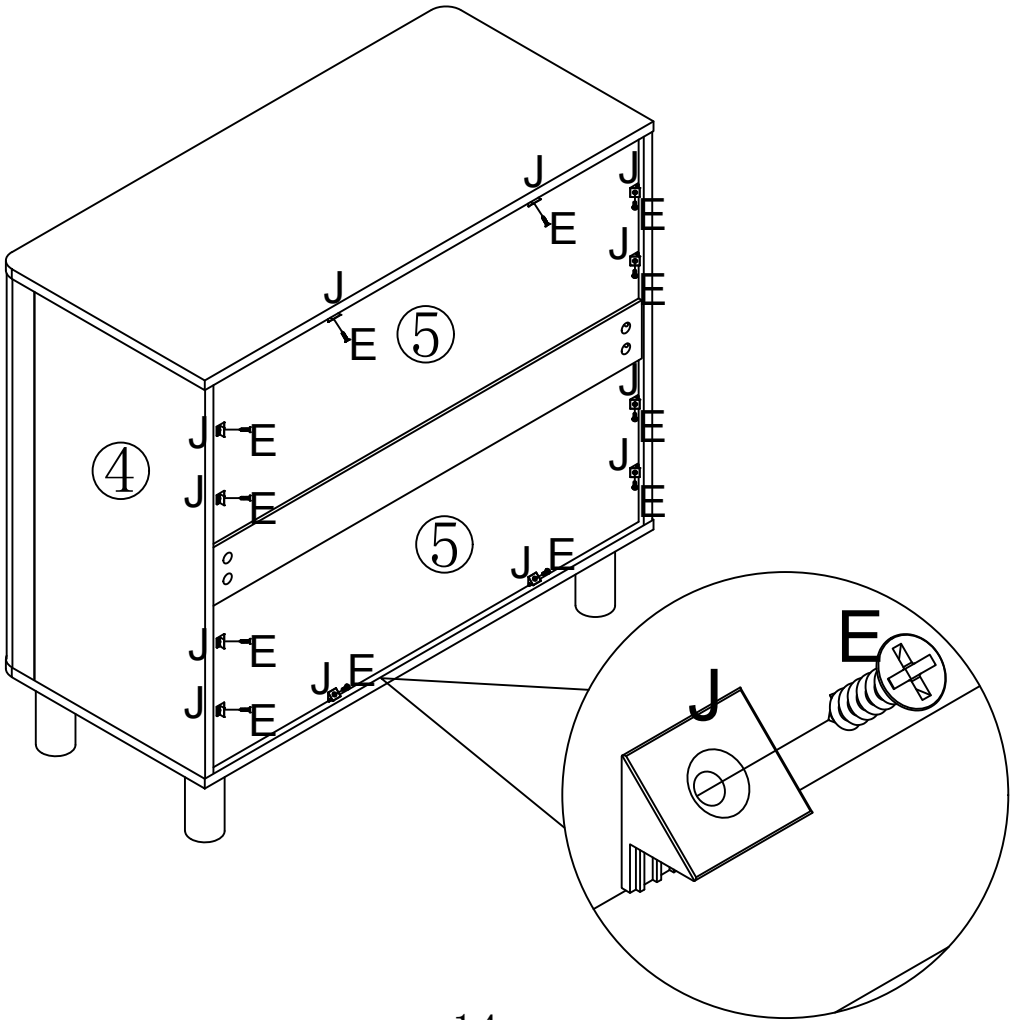
3. Adjust the screws shown in Figure 3 to adjust the door left and right to the right position.



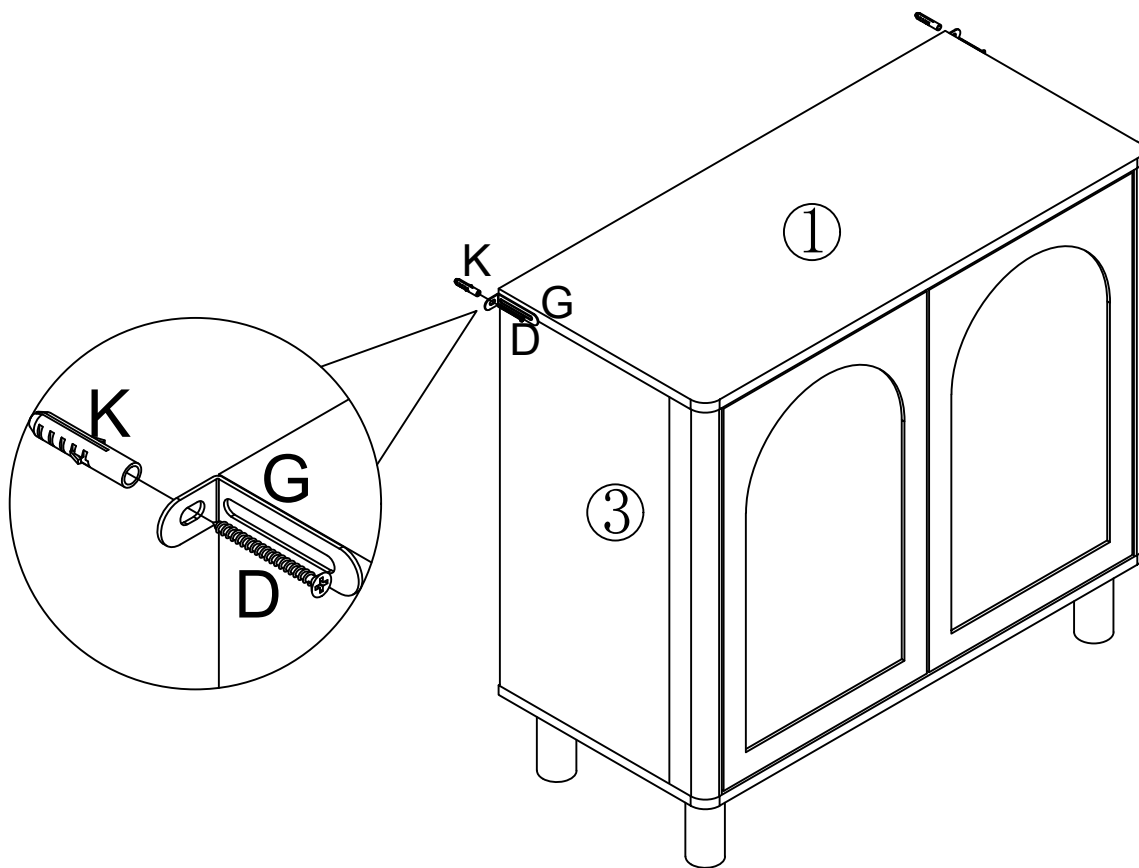
4. After the adjustment is complete, install the remaining two screws to secure the door in place.

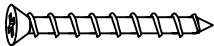
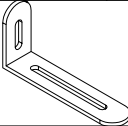

# Step 17

E	×12	J	×12
			

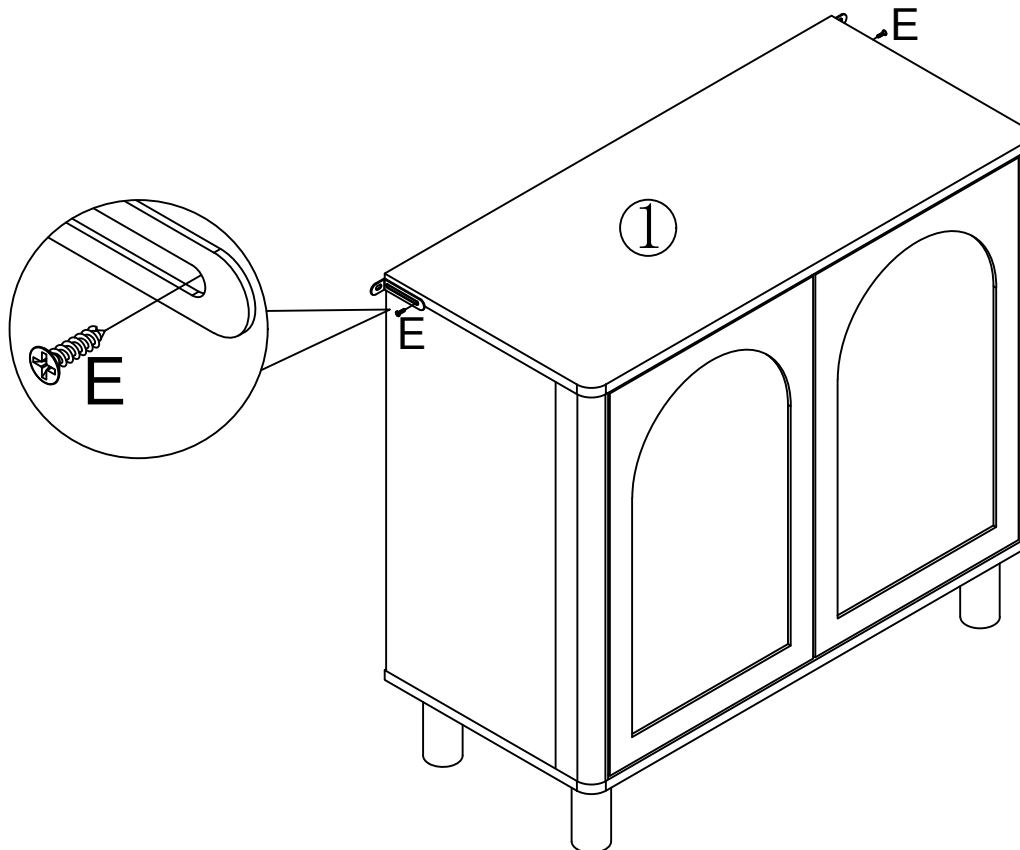



# Step 18



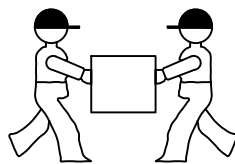
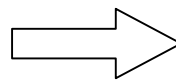
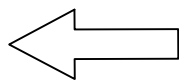
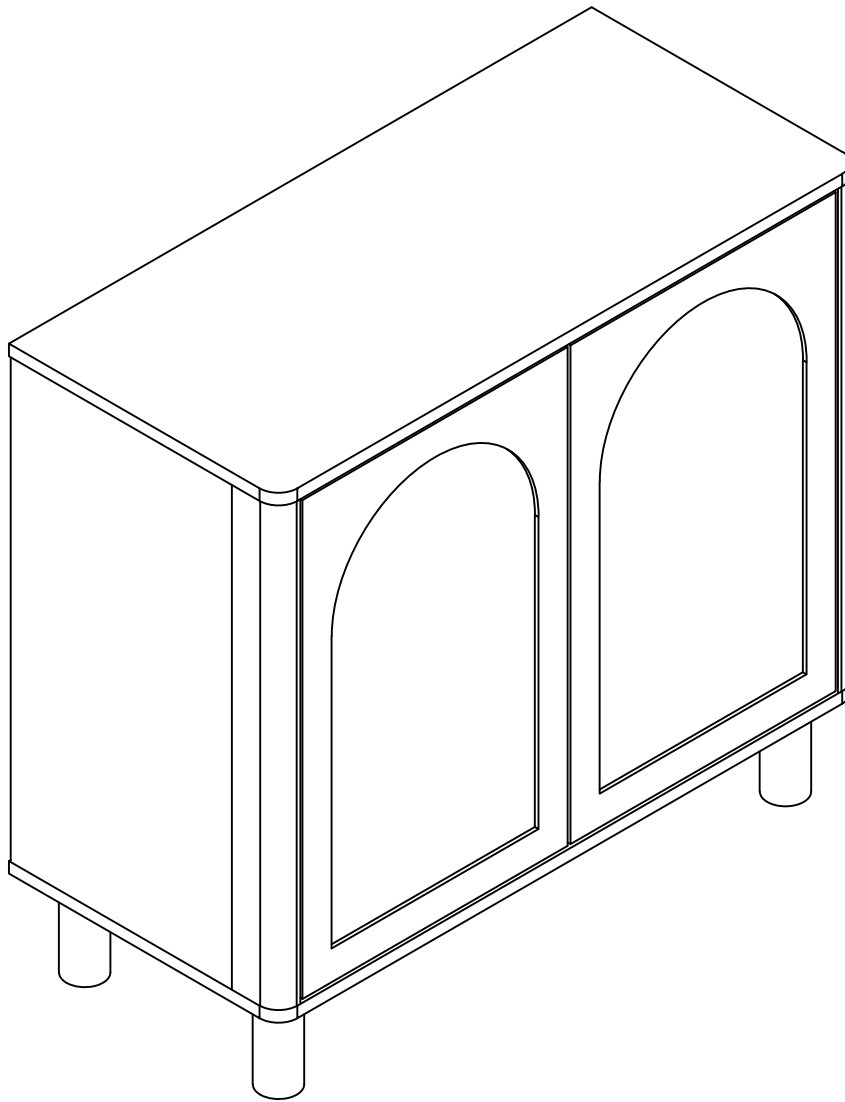
D	×2
	
G	×2
	
K	×2
	

# Step 19



E	×2
	

# Step 20



Two people work together to move the table.  
Make sure you lift it off the ground.  
Don't push and pull.