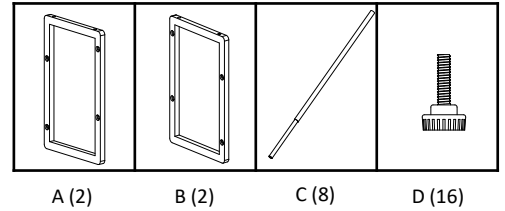


ASSEMBLY INSTRUCTIONS

STEP 1

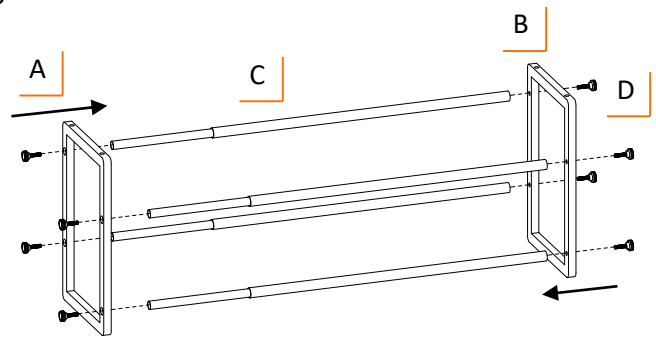
Make sure you have one LEFT SIDE FRAME (A) and one RIGHT SIDE FRAME (B). Take LEFT SIDE FRAME (A) and RIGHT SIDE FRAME (B) with logo facing out and right side up.



Connect large ends of EXPANDABLE RODS (C) to RIGHT SIDE FRAME (B) with THUMB SCREWS (D) through frame holes and screw into EXPANDABLE RODS (C). Connect small ends of EXPANDABLE RODS (C) to LEFT SIDE FRAME (A) with THUMB SCREWS (D).

Make sure THUMB SCREWS (D) are tightened clockwise.

Repeat step to assemble second shoe rack.



STEP 2

Place DOWELS (E) into the dowel holes of both shoe rack frame bottoms. Shoe racks can be placed side by side or stacked.

For stackable option, stack one shoe rack on the other shoe rack, make sure the DOWELS (E) are seated inside each hole.

When stacked, EXPANDABLE RODS (C) should be identically placed, small ends on top of small ends. Shoe racks can be expanded to desired width.

