

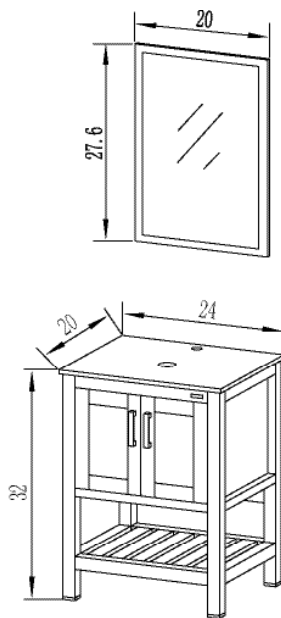


BT-B06

## INSTALLATION INSTRUCTIONS

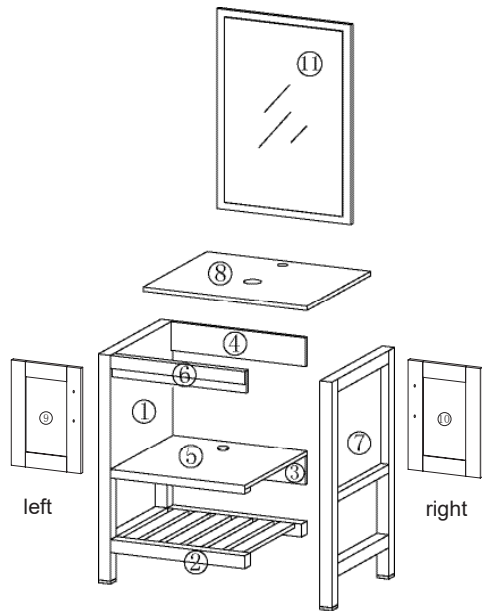
\*The vessel and faucet set is not included

### DIMENSIONS



Unit:inch

### ASSEMBLY DIAGRAM

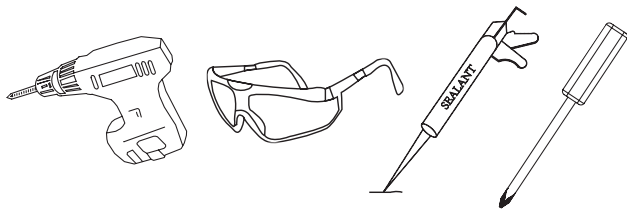


### PARTS LIST

PARTS LIST			HARDWARE LIST		
NO.	DESCRIPTION	QTY	NO.	DESCRIPTION	QTY
1		1	A	CAM LOCK	29
2		1	B	CAM SCREW	29
3		1	C	CAM LOCK COVER	29
4		1	D	WOODEN DOWEL	10
5		1	E	SCREW	24
6		1	F	HINGE	4
7		1	G	HASCREW(φ4x20mm)	4
8		1	H	HANDLE	2
9		1	I	(φ3.5x35mm)	2
10		1	J	(φ6x30mm)	2
11		1	K	BOTTOM DRAIN HOLE COVER	1

**CAUTION:** Please confirm the parts list before installtion

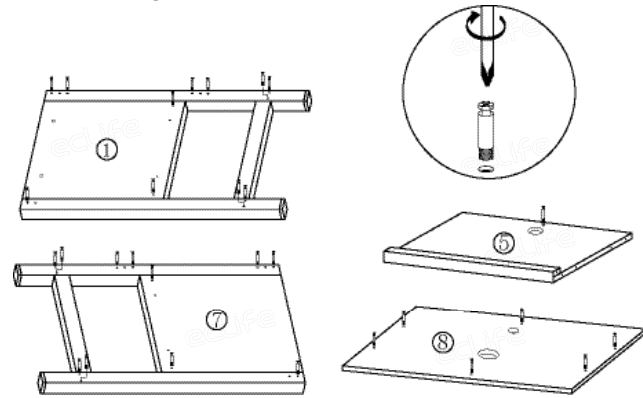
### YOU MAY NEED (NOT SUPPLIED)



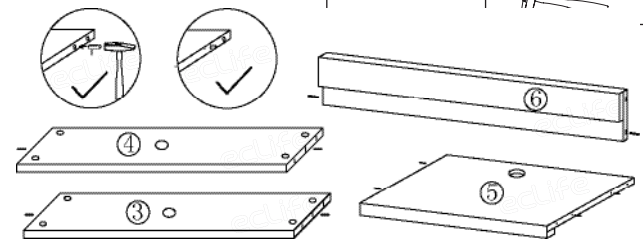
### INSTALLATIONS

#### STEP 1

●Insert the Cam Screw

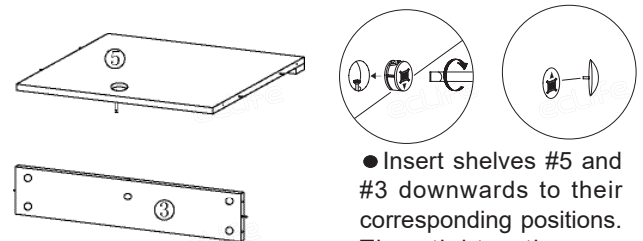


#### STEP 2



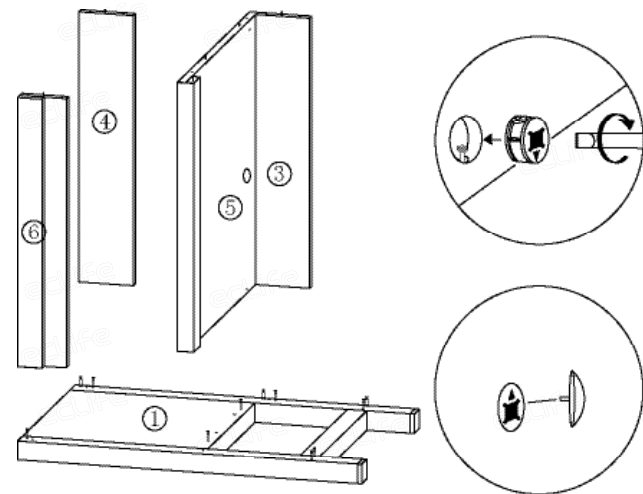
● Insert the wooden dowel pins into the shelves.

#### STEP 3



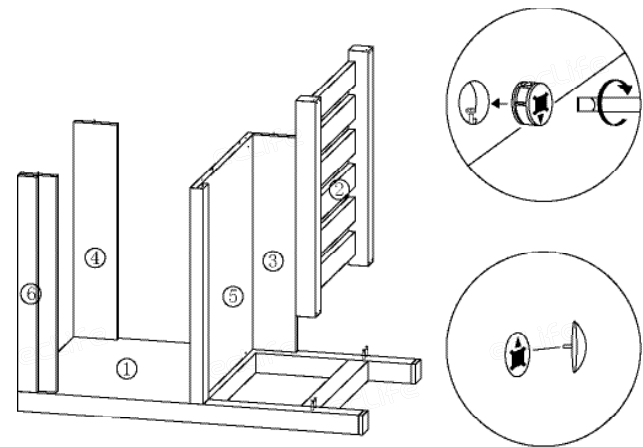
●Insert shelves #5 and #3 downwards to their corresponding positions. Then tighten the cam lock with the cover.

#### STEP 4



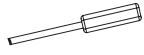
●Refer to the illustration, install shelves #4, #6 and already assembled #3, #5 on the shelf #1. Then tighten the cam lock with the cover.

#### STEP 5



●Install shelf #2 on the shelf #1. Then tighten the cam lock with the cover.

HARDWARE LIST		
A		7PCS
C		7PCS



HARDWARE LIST		
B		29PCS



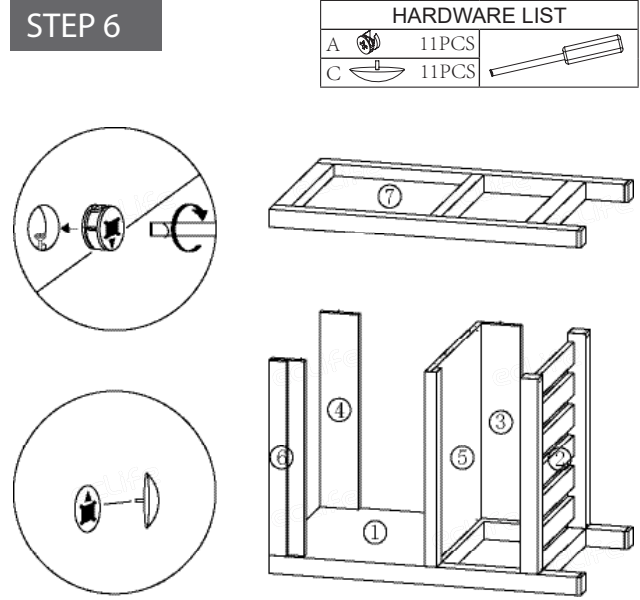
HARDWARE LIST		
D		10PCS



HARDWARE LIST		
A		4PCS
C		4PCS

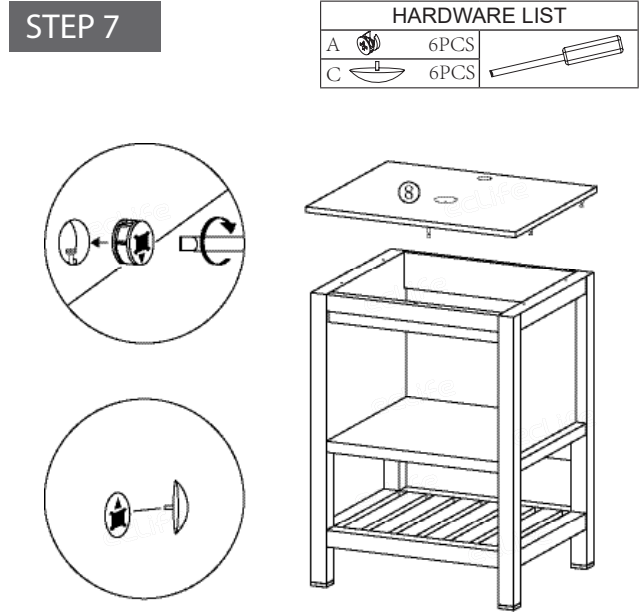


STEP 6



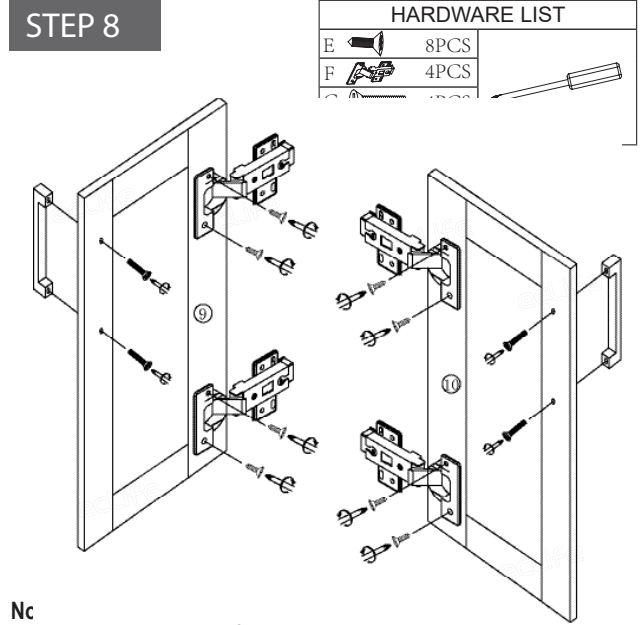
●Install shelf #7 on the cabinet. Then tighten the cam lock with the cover.

STEP 7



●Install shelf #8 on the cabinet. Then tighten the cam lock with the cover.

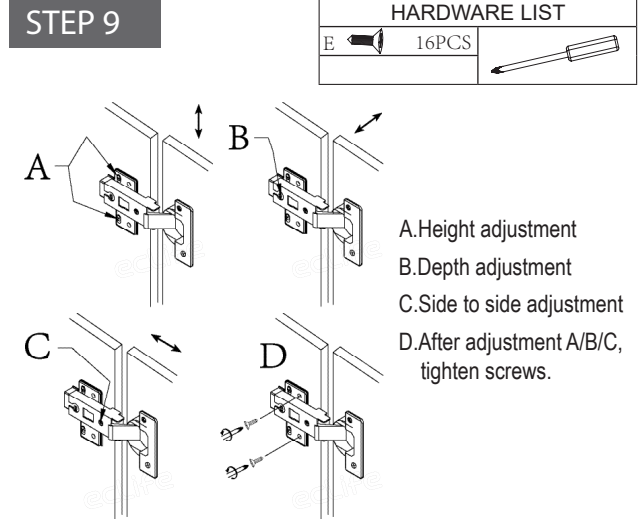
STEP 8



Nc

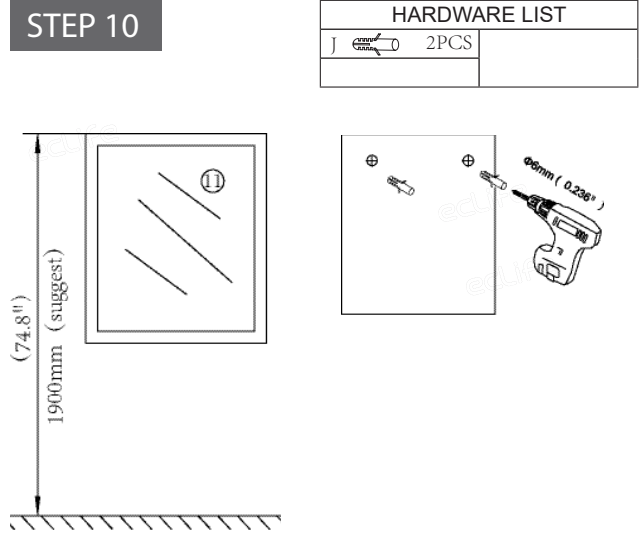
●Use G SCREWS to install the handle and apply E SCREWS to fix the hinge on the shelf #9. Then use E SCREWS to connect the hinge bracket to the cabinet. Repeat these steps for the other door.

STEP 9



●To ensure proper cabinet alignment, refer to the above illustrations for instructions about adjusting the cabinet height, depth and lateral movement.

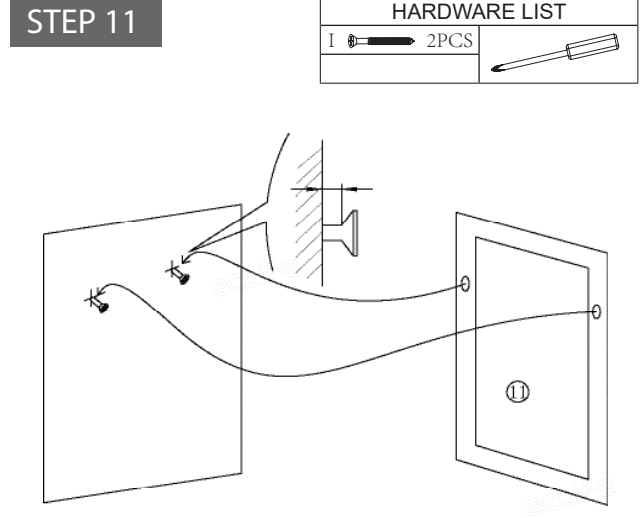
STEP 10



● Measure the distance of hole on the back of mirror and insert the expansion anchor into the wall.

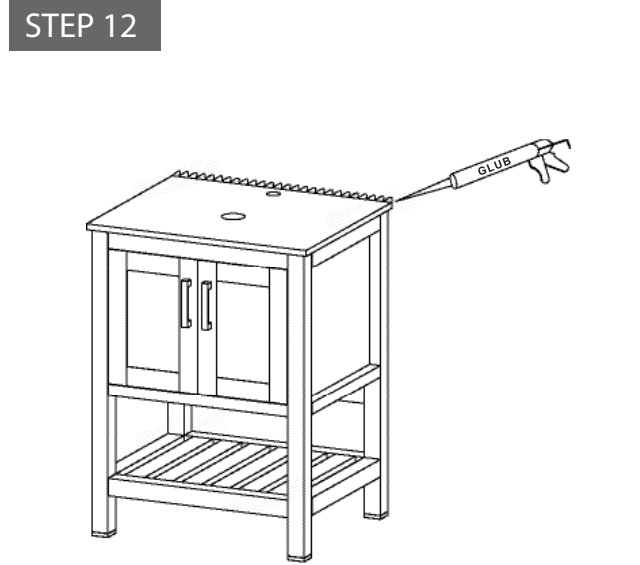
**Note:** Appropriate distance from the top of mirror to the ground is 74.8".

STEP 11



● Insert the expansion into the anchor. Leave about 5mm (0.2") clearance for the mirror. Then connect the mirror.

STEP 12



● To help prevent mildew, apply sealant to the space between the wall and the edge of the cabinet.

CARE AND CLEANING

1. Many cleansers contain abrasive and chemical substance which is not suitable for cleaning stainless steel, enamel, plating or plastic products. You may use mild cleansers or soaps to clean the surfaces. Wipe any splashes of cleaner solutions from the surface with a clean soft cloth.
2. Maintain ventilation in the bathroom and separate the dry area from the damp one if conditions permit. Try to open the door and windows of the bathroom to maintain adequate ventilation.
3. This cabinet is built to withstand normal bathroom humidity. For best results, keep this vanity dry and take necessary steps to minimize bathrom humidity by opening windows and doors and using the exhaust fan (if available).
4. To maintain the cabinet door, clean and wipe the door regularly with a soft cloth. Wipe condensation with a dry, soft cloth. Keep away from fires and high temperatures.
5. Please do not sit, lean or step on the basin cabinet.



FEEDBACK ★★★★★

Thank you very much for purchasing from us.

We have always been trying to provide the best service and reliable products for every customer.

We sincerely hope you will be satisfied with our products and leave us FIVE STARS and POSITIVE feedback/review in our page.

However, accident may happen sometimes, please contact us to resolve any issue before leaving a negative feedback.

Many thanks and welcome to our shop again!

**Contact number:** 646-2230128  
**E-mail:** support@ec-export.com  
**www.ec-export.com**

