

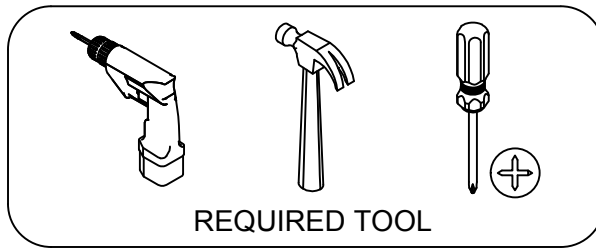
ANTI-TIP RESTRAINT INSTALLATION

Serious or fatal crushing injuries can occur from furniture tip-over. To help prevent tip-over:

1. Install tip-over restraint provided.
 2. Do not set heavy objects on top of this product, unless the product is specifically designed to accommodate them.
 3. Never allow children to climb or hang on mirrors, shelves, consoles, or cabinets with doors and/or drawers.
- Use of tip-over restraints may only reduce but not eliminate, the risk of tip-over.



WARNING!



NO.	Hardware	QTY
①		4
②		4
③		4
④		4
⑤		2

Hardware (③/④) to attach brackets to wall is designed for drywall. To attach this unit to another type of wall, consult with your local hardware store.

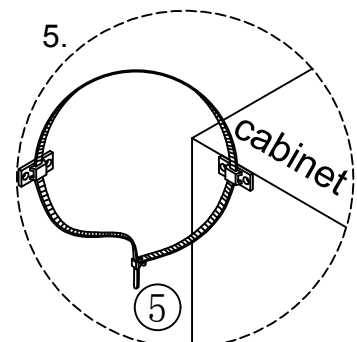
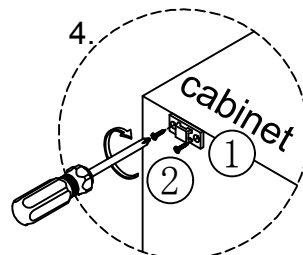
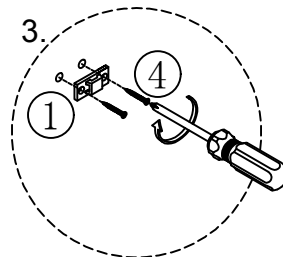
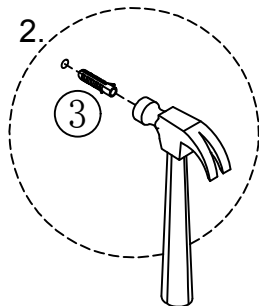
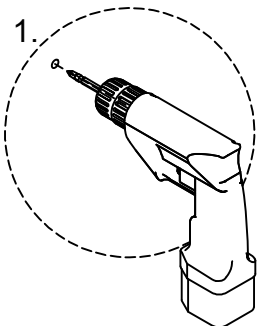
Note: Please be careful during the installation of the anti-tip kit. We would not be responsible for the damage to the item(s) caused by any improper installation.

Step 1. Mark on the wall where the bracket ① should be placed, then drill holes and insert the plugs ③ into the drilled holes. Install the bracket ① to the wall with screws ④.

Step 2. Repeat to install another bracket ① to the product.

Step 3. Insert the strap ⑤ through the two brackets ①, then connect and pull the strap ⑤ down until it snap-locked.

Step 4. Check the safety and begin to use.



The image is for reference only and does not represent the product you purchased.