

# ACT3056 - Dual Handle Monobloc Quad

Product Finish: Brushed Brass

EAN13 barcode: 5060879992221



## Product features:

- Metal construction throughout
- Quarter turn handle action for precise flow control
- Antisplash spout supplied as standard
- Supplied complete with flexible tail pipes for fast simple fitting
- Custom designed for lower to mid pressures

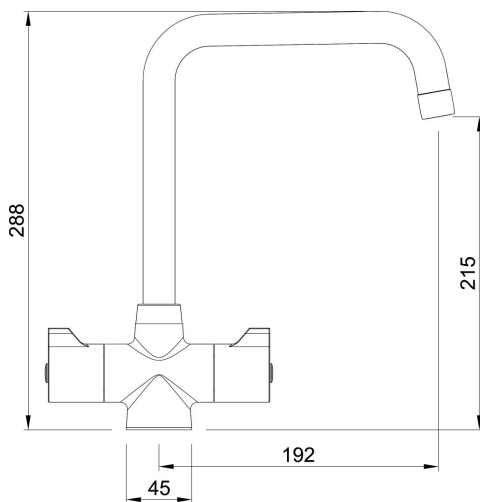
## Additional information / Parts included:

SCO06032

Primary WRAS fittings number (see [www.wras.co.uk](http://www.wras.co.uk)):

2110386

## Product dimensions:



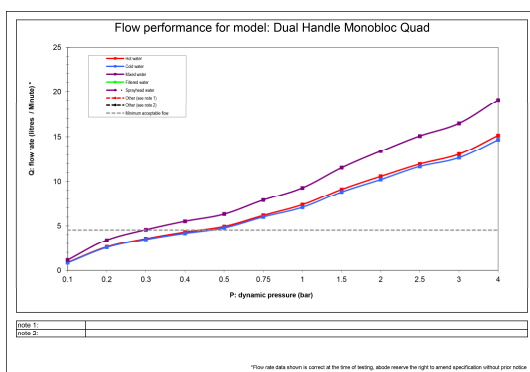
- Overall Height / projection: 288 mm
- Exit reach: 192 mm
- Exit height: 215 mm
- Centre distance(s): n/a
- Base diameter(s): 45 x n/amm
- Recommended hole diameter: Ø35 mm
- Max. surface depth: 50 mm
- Spout diameter: 22 mm
- Spout aerator size: M22x1 F

## Packaged properties:

Box length: 420 mm  
Box width: 235 mm  
Tap only weight: 1.14 kg

Box depth: 75 mm  
Units per outer: 5  
Boxed weight: 1.55 kg

## Product flow characteristics:



- Min / Max water pressure: 0.30 / 5.5 bar
- Recommended / Max water temperature: 46°C / 70°C
- Part G - Mixed flow rate at 3 bar (litres / min): 16.46

- Control valve type: 1/2" ceramic disc, quarter turn operation
- Flow characteristics: Single Flow
- Non return valve(s): None

- Aerator type: Honeycomb
- Spout connection method: Locking Collar

- Tail pipe inlet / outlet size: M12 / 1/2" bsp female
- Inlet pipe type / length: Flexible stainless braided hose / 255 mm

## Care instructions summary:

- Clean the mixers and showers regularly as required, using soap, do not use any other cleaners.
- Regular cleaning will prevent the build up of lime scale and dirt
- After cleaning rinse thoroughly with clean water to remove any cleaner residue
- Residues of sink & worktop cleaners can also cause damage, so rinse with clean water after using, avoid contact with any abrasives

## Warranty Summary (Full details available on request):

- Materials and workmanship defects warranted for 5 years
- Valves and working parts warranted for 5 years
- Surface warranty defects warranted for 1 year
- O-rings, hoses & gaskets warranted for 1 year