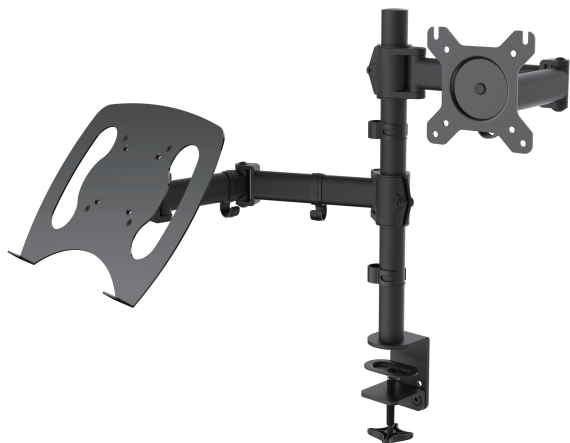


## Monitor Desk mount



SA-LH07

### Installation Video



Thank you for choosing our Product. We are dedicated to providing the highest level of quality and service to our customers.  
If you are satisfied with the product, would you kindly share your feedback on Amazon.  
Please do not hesitate to contact us if you have any issue.  
Call: +1 (855) 266-9166 Mon-Fri 8:00am – 9:00pm (Eastern Time) (Canada/USA)  
Email: [Support@ShoppingAll.com](mailto:Support@ShoppingAll.com)  
Website: [www.ShoppingAll.com](http://www.ShoppingAll.com)



8kg(17.6lbs) max.



13" - 32"(33-81cm) .

## WARNING STATEMENTS

### Warning

Desktop structure must be capable of supporting at least a maximum weight 20 kg (44lbs). If not, the desktop must be reinforced.  
Proper installation procedure by a qualified service technician, as outlined in the installation instructions, must be adhered to. Failure to do so could result in serious personal injury, or even death.

Safety measures must be practiced at all times during the installation of this product. Use proper safety gear and tools for the installation procedure to prevent personal injury.











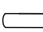


Prior to the installation of this product, the installation instructions should be read and completely understood. The installation instructions must be read to prevent personal injury and property damage.  
Keep these installation instructions in an easily accessible location for future reference.

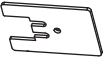

**⚠** Do not install on a structure that is prone to vibration, movement or chance of impact. Failure to do so could result in damage to the display and/or damage to the mounting surface.

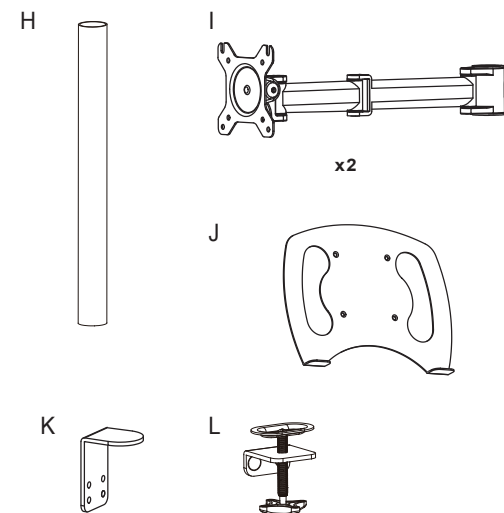
**⚠** Do not install near heater, fireplace, direct sunlight, air conditioning or any other source of direct heat energy. Failure to do so may result in damage to the display and could increase the risk of fire.

**⚠** Prior to the installation of monitor and laptop, ensure that the supporting arm is installed with the adjustment screw facing upwards, otherwise the adjustment screw may come loose and the arm joints may dismantle and cause the arm to fall (Please refer to Part 2 of Installation Manual).

## PARTS INCLUDED

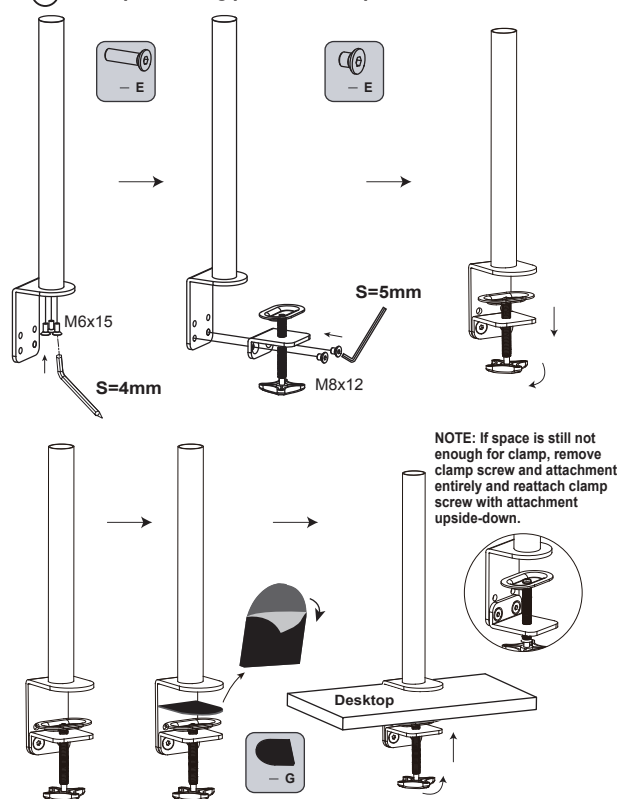
A	 M4x8 (x8)	 M4x12 (x8)	 M4x30 (x8)
B	 M5x12(x4)	 M5(x4)	
C	 12X5.8X16 (x8)	 S=4mm (x1)	 S=5mm (x1)
D	 (x2)	 (x4)	
E	 M6x70(x2)	 M8x12(x2)	 M6x15(x3)

F	 (x2)	
G	 (x1)	

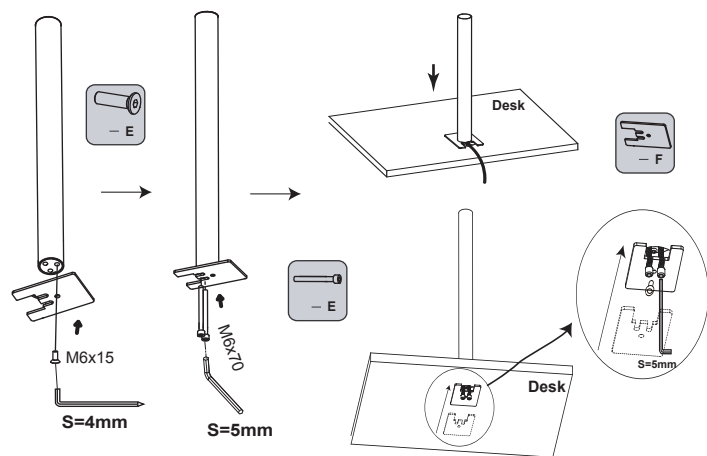


# ► INSTALLATION

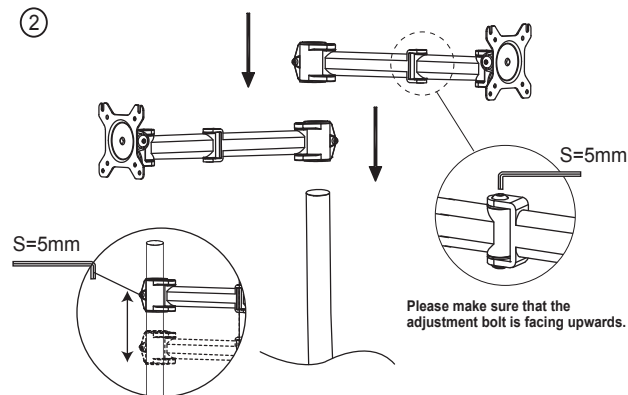
## ① Clamp mounting part install step



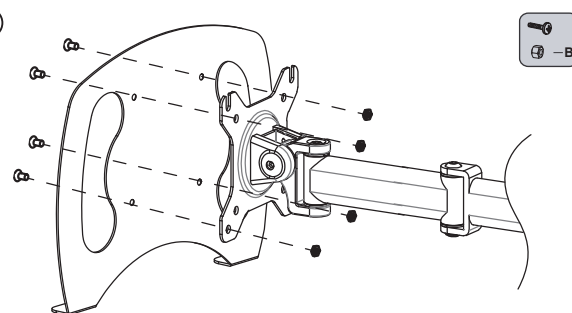
## OR Grommet mounting part install step



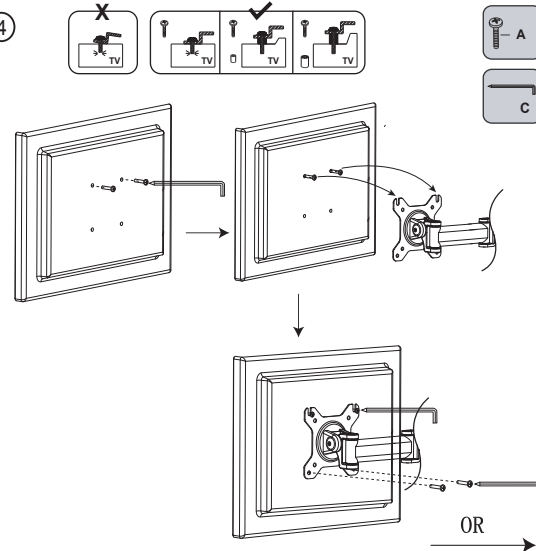
## ②



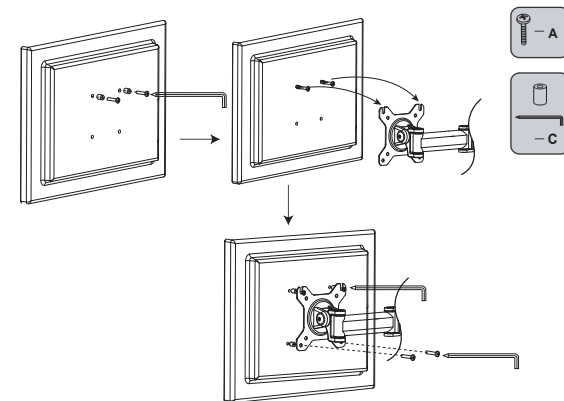
## ③



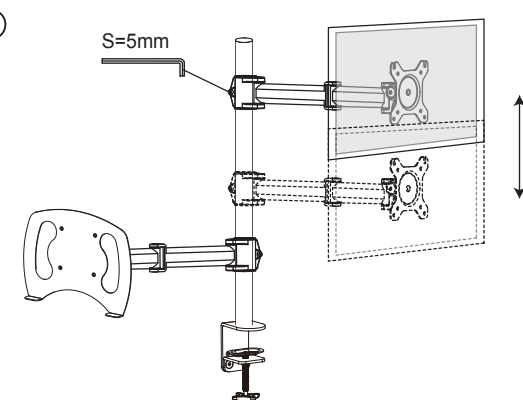
## ④



## ④



## ⑤



## ⑥

