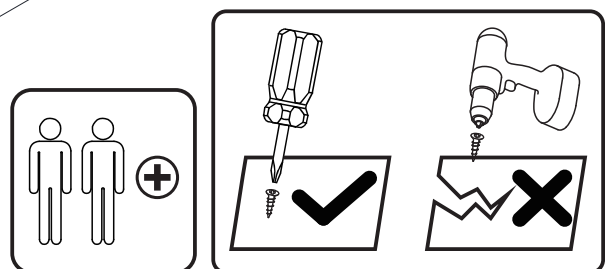
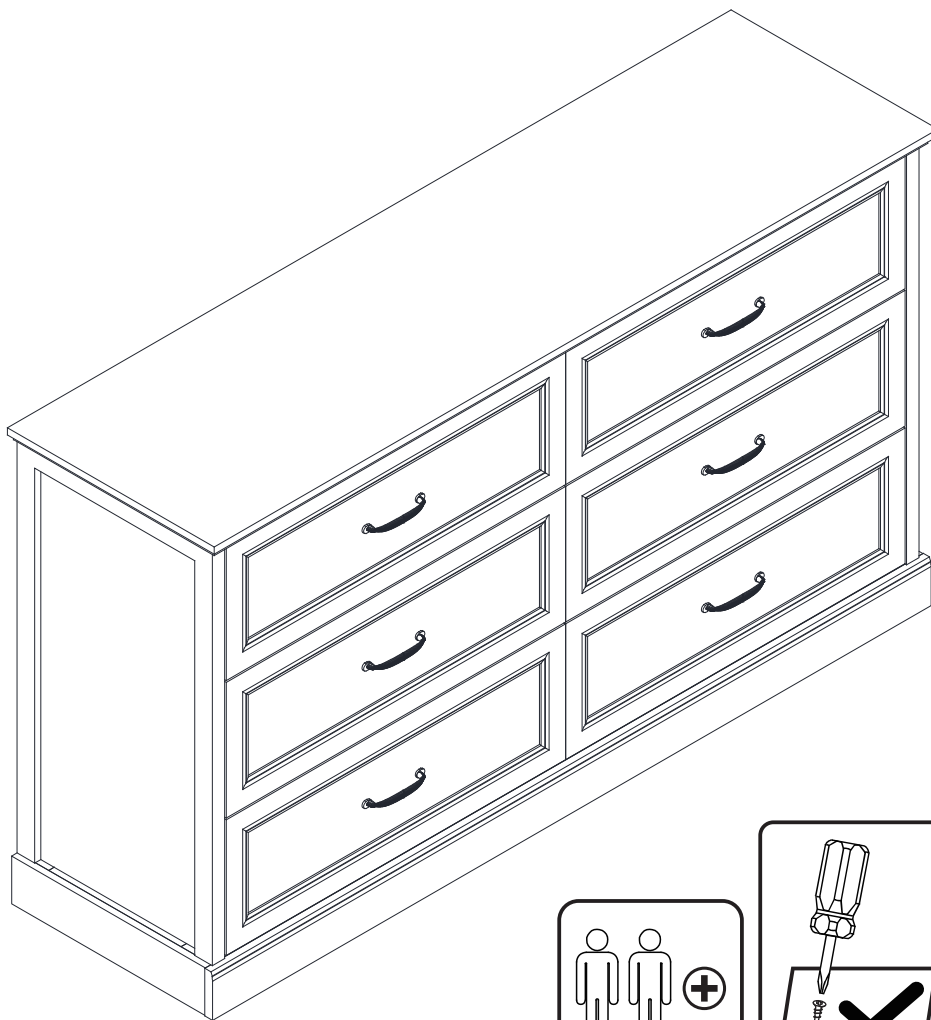


# ASSEMBLY INSTRUCTIONS



## Tools Recommended

THIS INSTRUCTIONS CONTAINS IMPORTANT SAFETY INFORMATION.  
PLEASE READ BEFORE ASSEMBLY AND KEEP FOR FUTURE REFERENCE.

# IMPORTANT NOTICE




- This product contains small components, please ensure that they are kept away from small children.
- THIS INSTRUCTIONS CONTAINS IMPORTANT SAFETY INFORMATION. PLEASE READ BEFORE ASSEMBLY AND KEEP FOR FUTURE REFERENCE.
- Read each step carefully. It is very important that each step of instruction is performed in the correct order. If these steps are not followed in sequence, assembly difficulties will occur.
- Make sure all parts are included. Most parts are labelled or stamped on the raw edge.
- Work in spacious area, preferably on a carpet, near the place the unit will be used.
- Do not use power tools to assemble your furniture. Power tools may strip or damage the parts.
- Move your new furniture carefully, with two people lift and carry the unit to it's new location.
- Never push, drag or pull your furniture (especially on carpet)

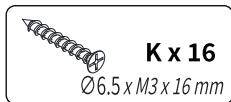
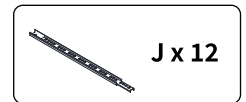
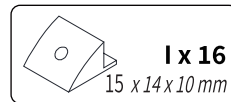
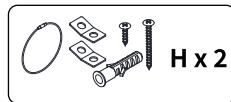
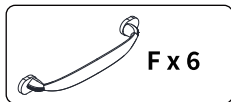
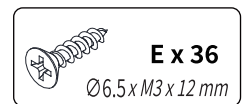
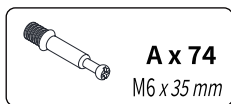
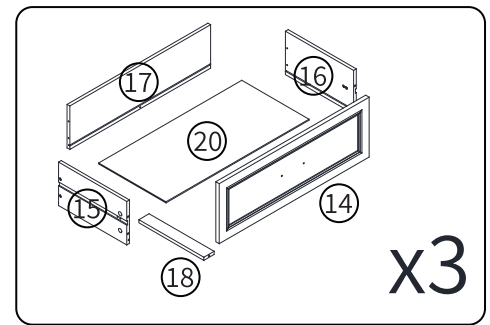
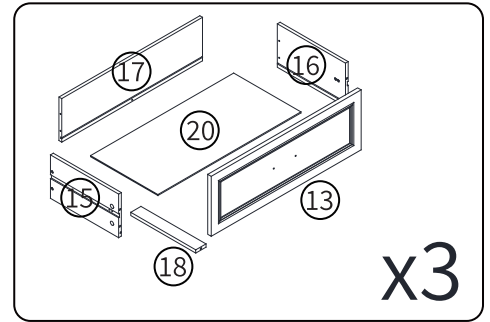
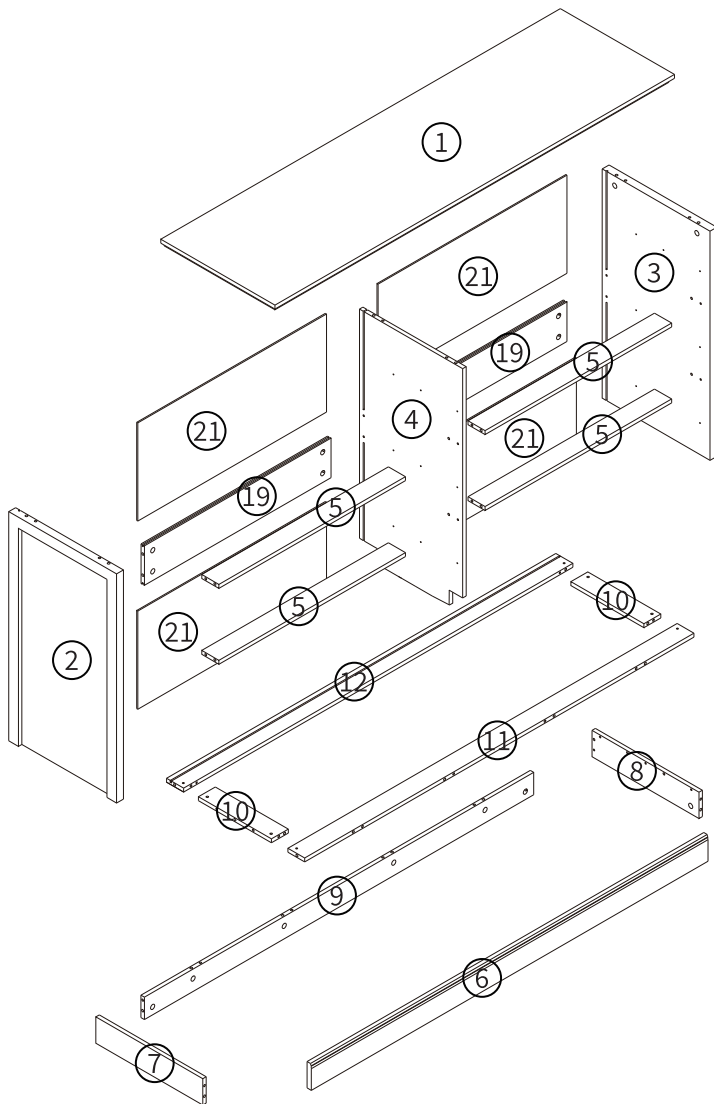


## PLEASE DO NOT RETURN PRODUCT TO US IMMEDIATELY

If a part is missing or damaged, email our customer service. We will gladly ship your replacement parts FREE of charge.

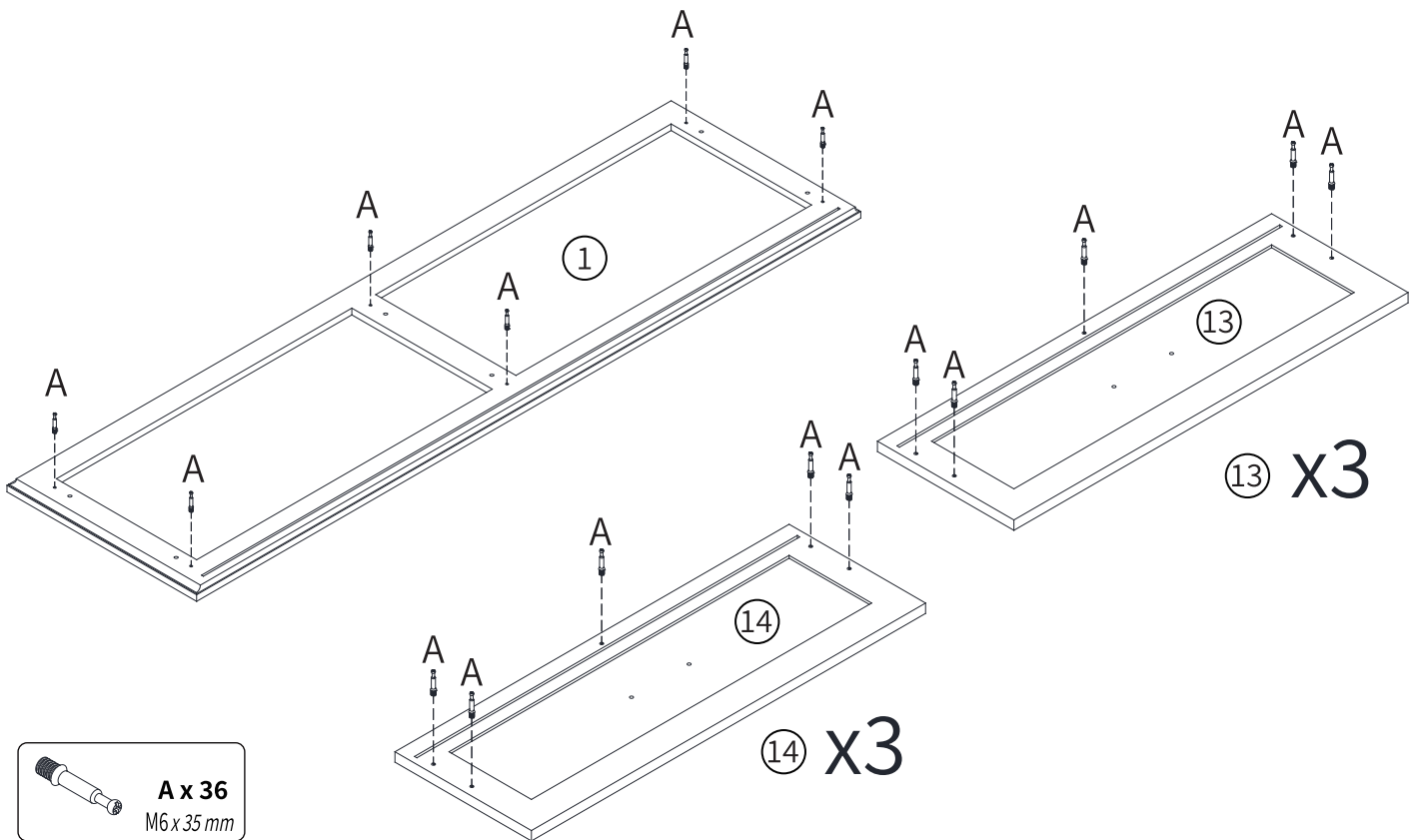
For Prompt, reliable service, please have your assemble instruction ready

 <b>WARNING</b>	
	<p><b>Children have died from furniture tipover. To reduce the risk of furniture tipover:</b></p> <ul style="list-style-type: none"><li>- ALWAYS install Anti-tip device provided.</li><li>- NEVER put a TV on this product.</li><li>- NEVER allow children to stand, climb or hang on any drawers, doors, or shelves.</li><li>- NEVER open more than one drawer at a time.</li><li>- Place heaviest items in the lowest drawers.</li></ul> <p><i>This is a permanent label. Do not remove!</i></p>
	



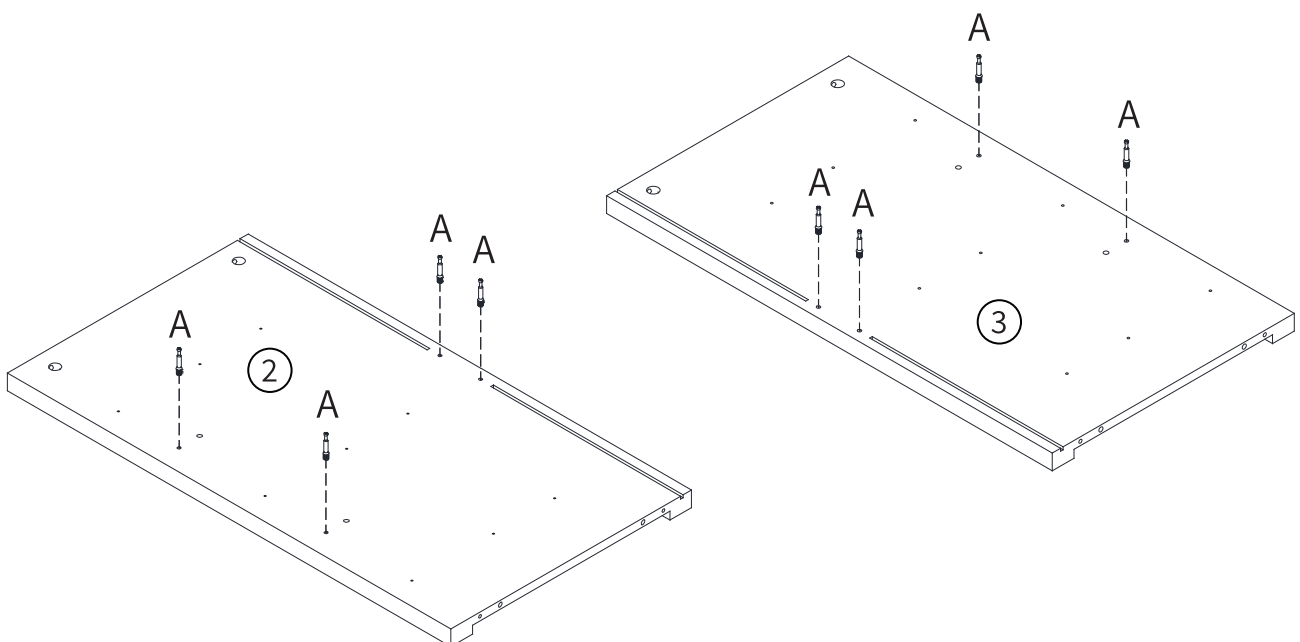
## Step 1

Insert quickfit screws(A) into corresponding holes in part ① ⑬ ⑭ as shown.



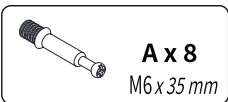
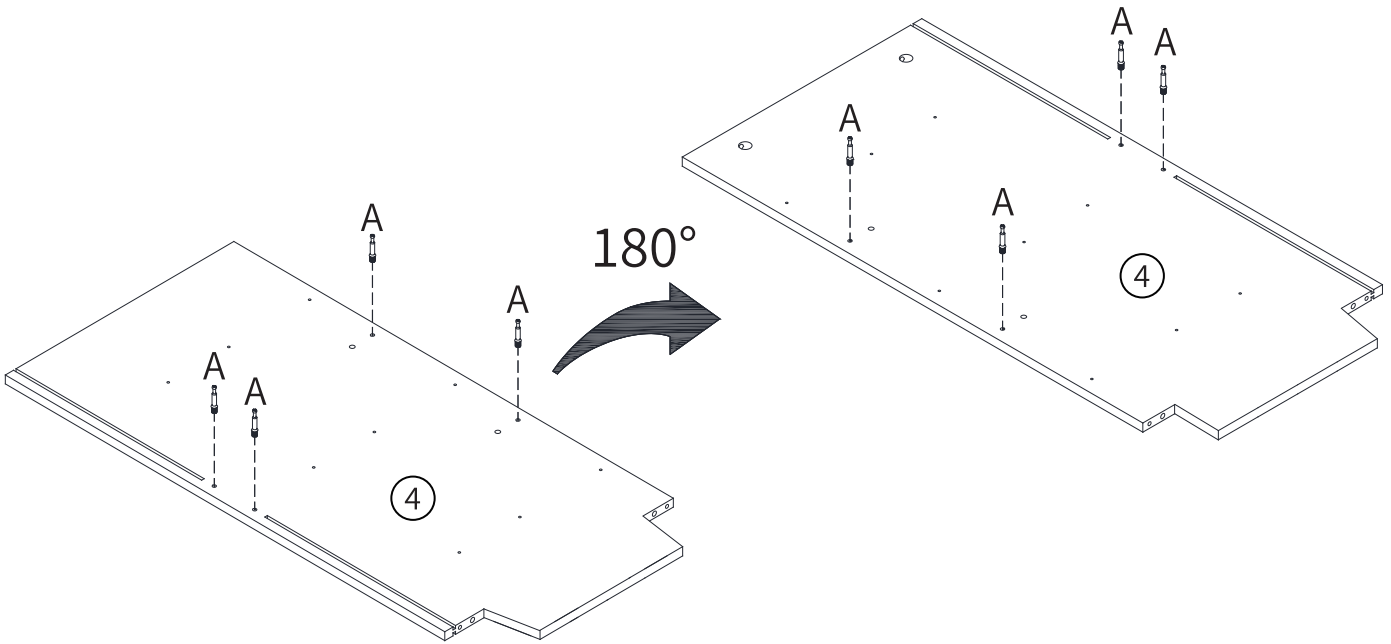
## Step 2

Insert quickfit screws(A) into corresponding holes in part ② ③ as shown.



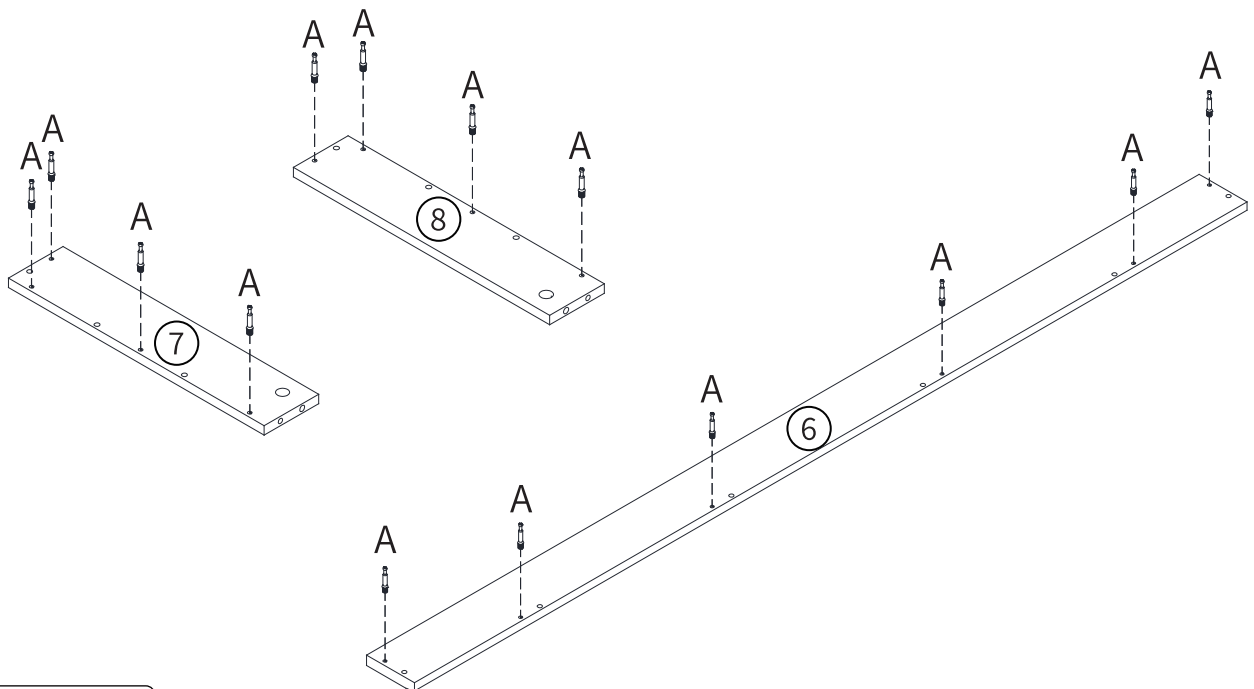
### Step 3

Insert quickfit screws(A) into corresponding holes in part ④ as shown.



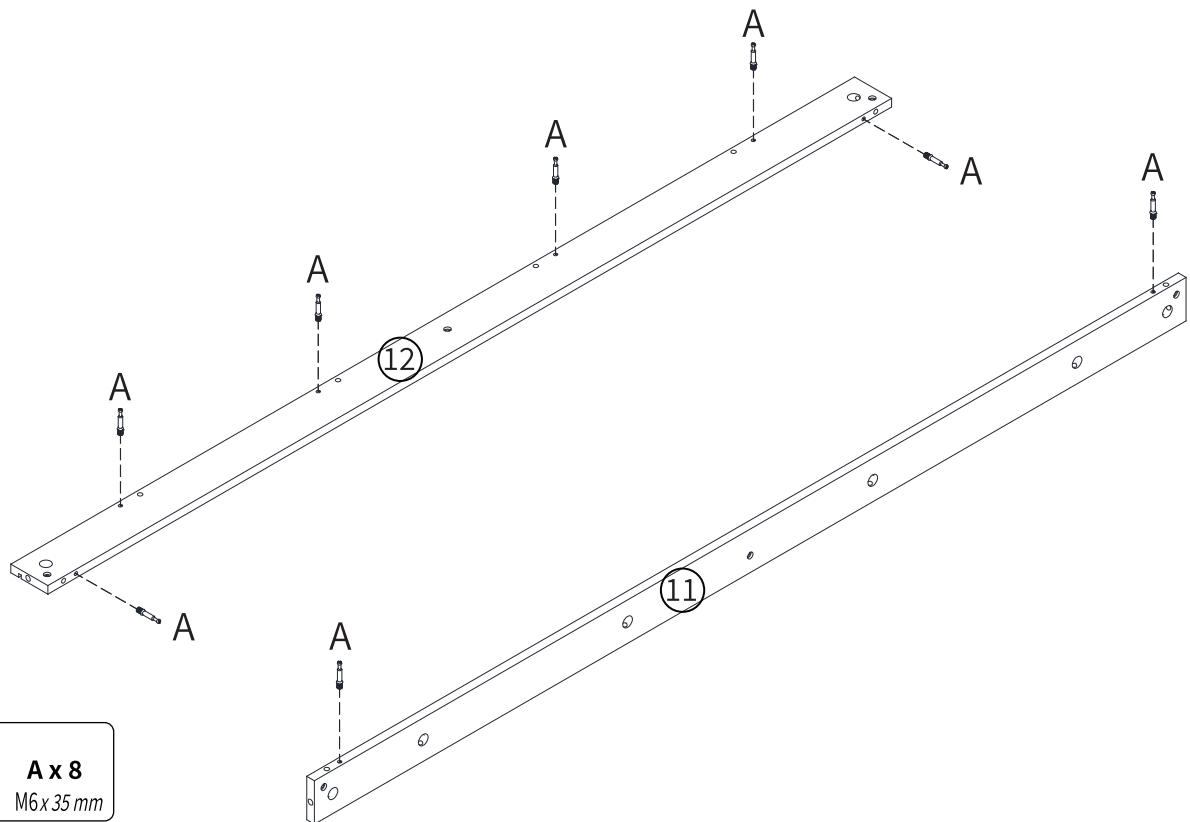
### Step 4

Insert quickfit screws(A) into corresponding holes in part ⑥ ⑦ ⑧ as shown.



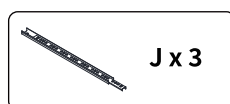
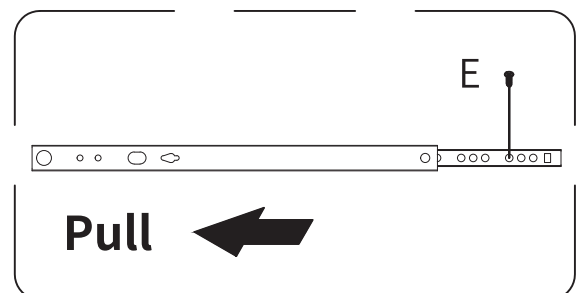
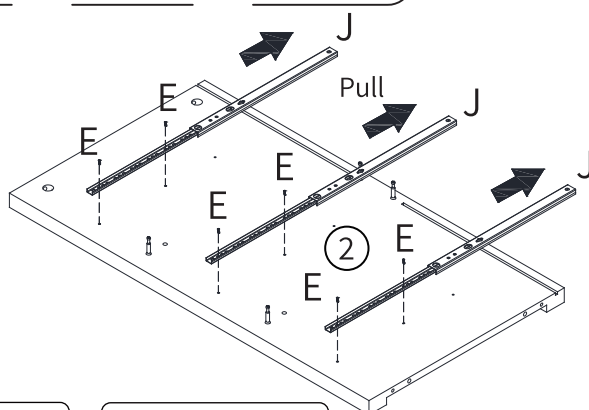
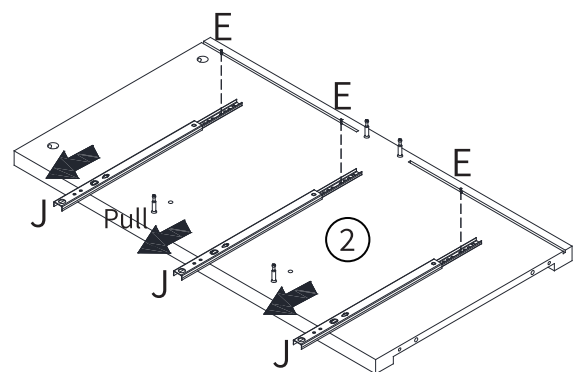
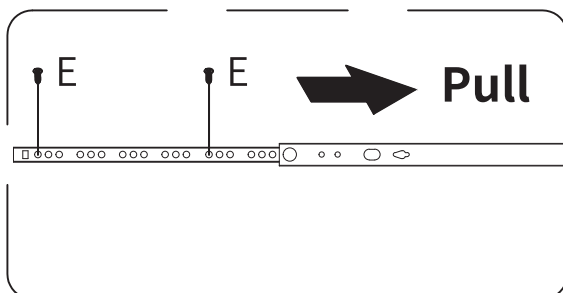
## Step 5

Insert quickfit screws(A) into corresponding holes in part ⑪ ⑫ as shown.



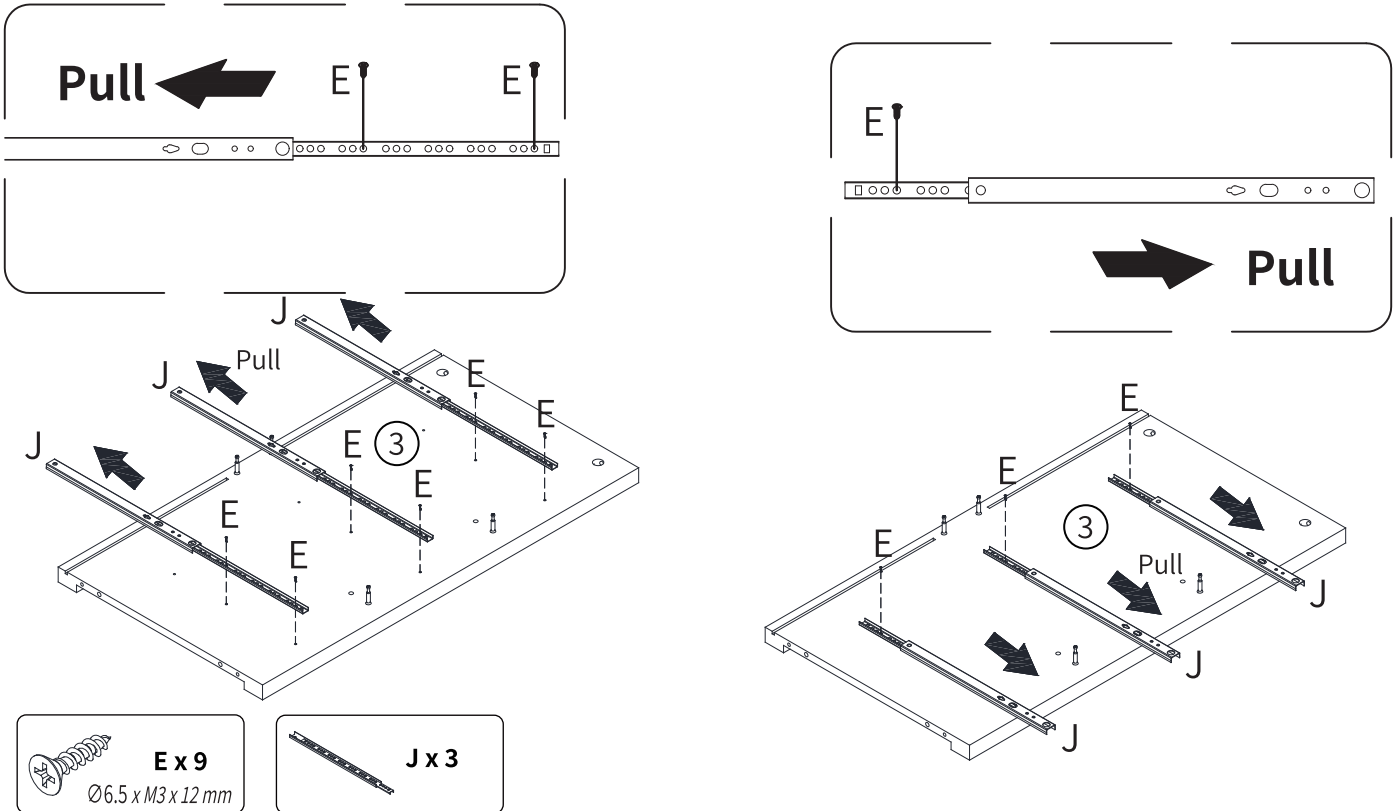
## Step 6

First, align the sliding-rail (J) with the pre-drilled holes on part ②, make sure the arrow on the sliding-rail points in the pulling direction, and then fix it with the two screws (E). Then pull the sliding-rail in the opposite direction and fix it with a screw (E). The diagram is shown as followed.



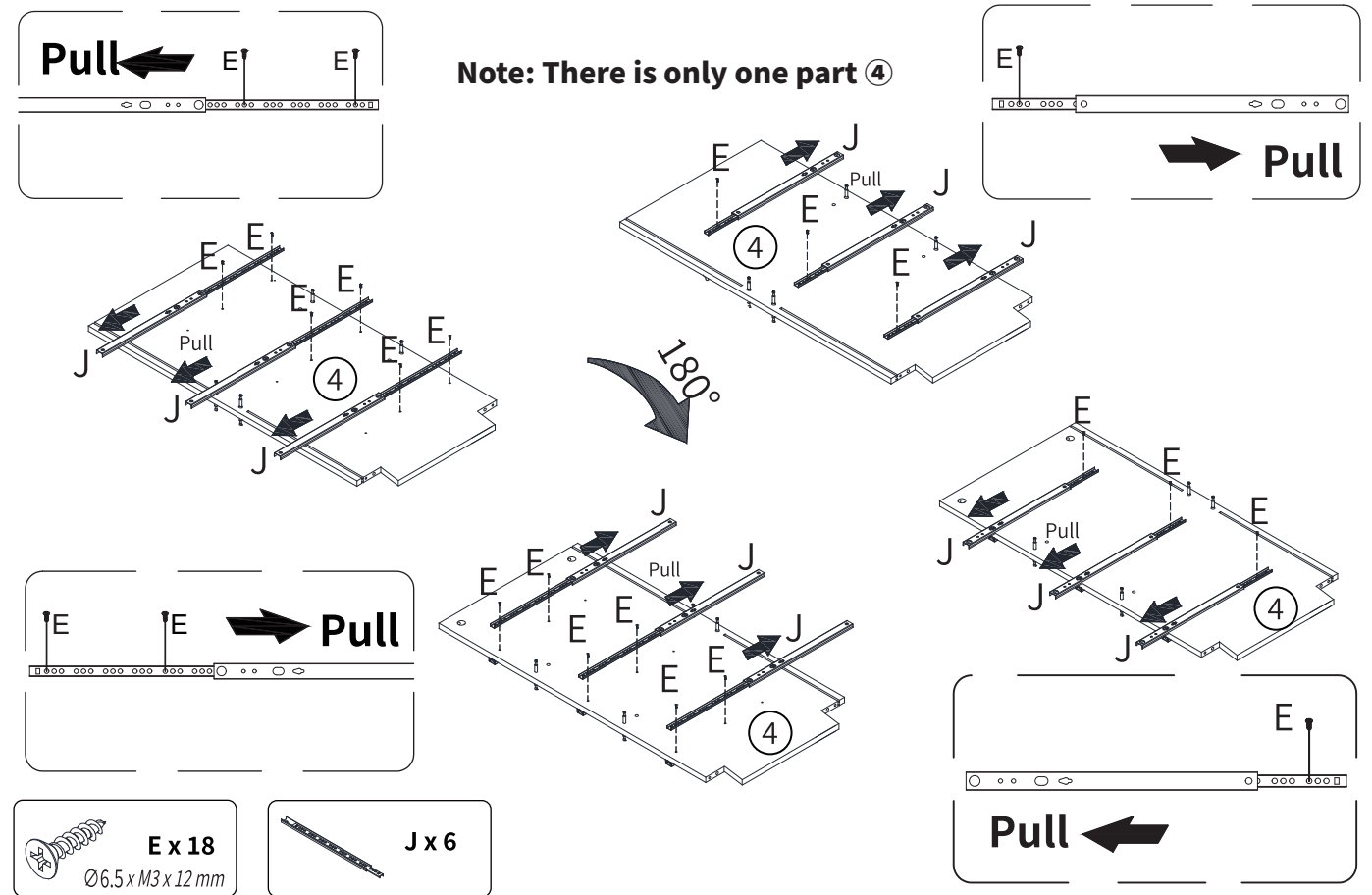
## Step 7

First, align the sliding-rail (J) with the pre-drilled holes on part ③, make sure the arrow on the sliding-rail points in the pulling direction, and then fix it with the two screws (E).  
Then pull the sliding-rail in the opposite direction and fix it with a screw (E).  
The diagram is shown as followed.



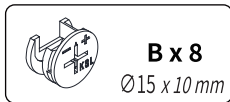
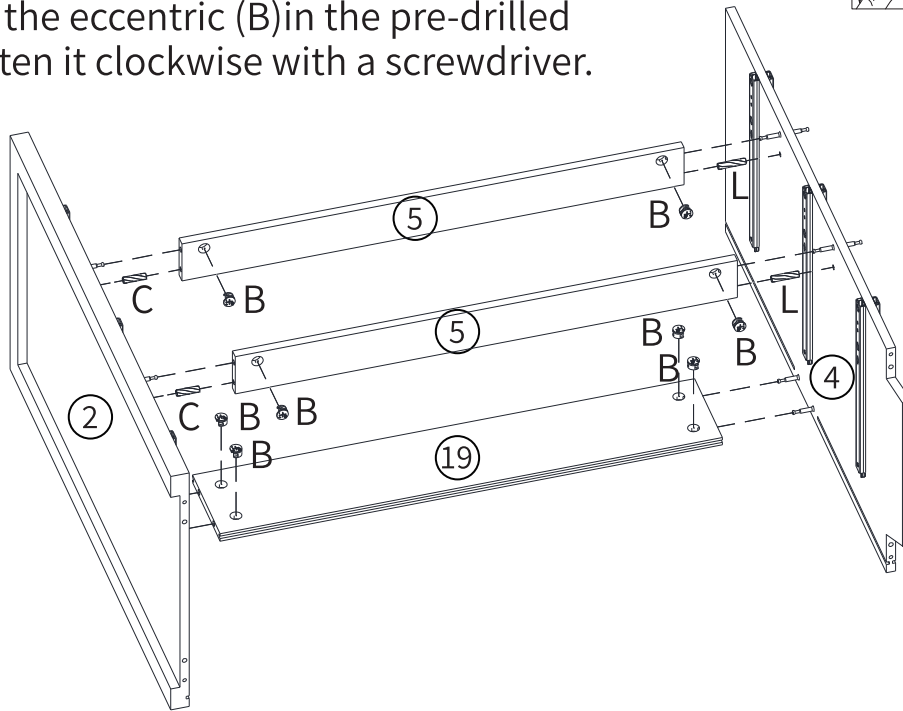
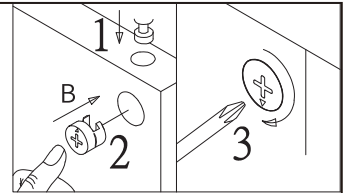
## Step 8

Lock the guide rail (J) to part ④ with screws (E) as shown  
Turn part ④ 180 degrees as shown and repeat the above operation.



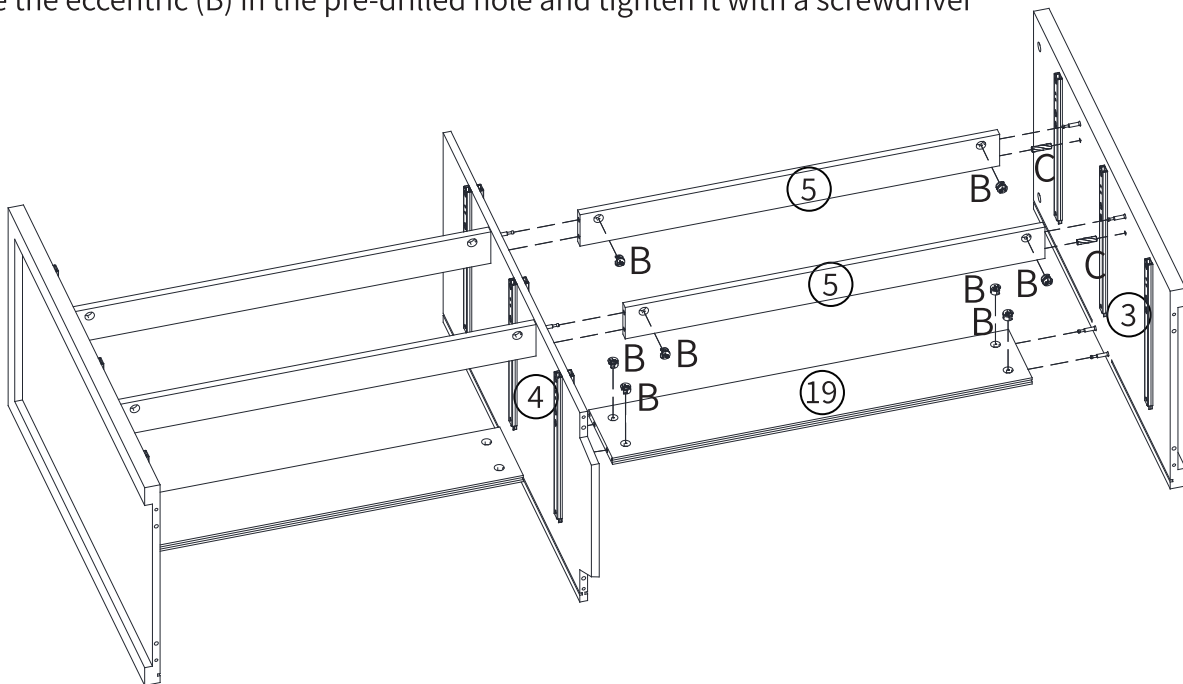
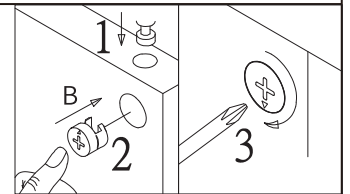
## Step 9

Insert the wooden peg (C) into part ② and the wooden peg (L) into part ④. connect part ②, ④ to part ⑤, ⑱. Finally, place the eccentric (B) in the pre-drilled hole and tighten it clockwise with a screwdriver.



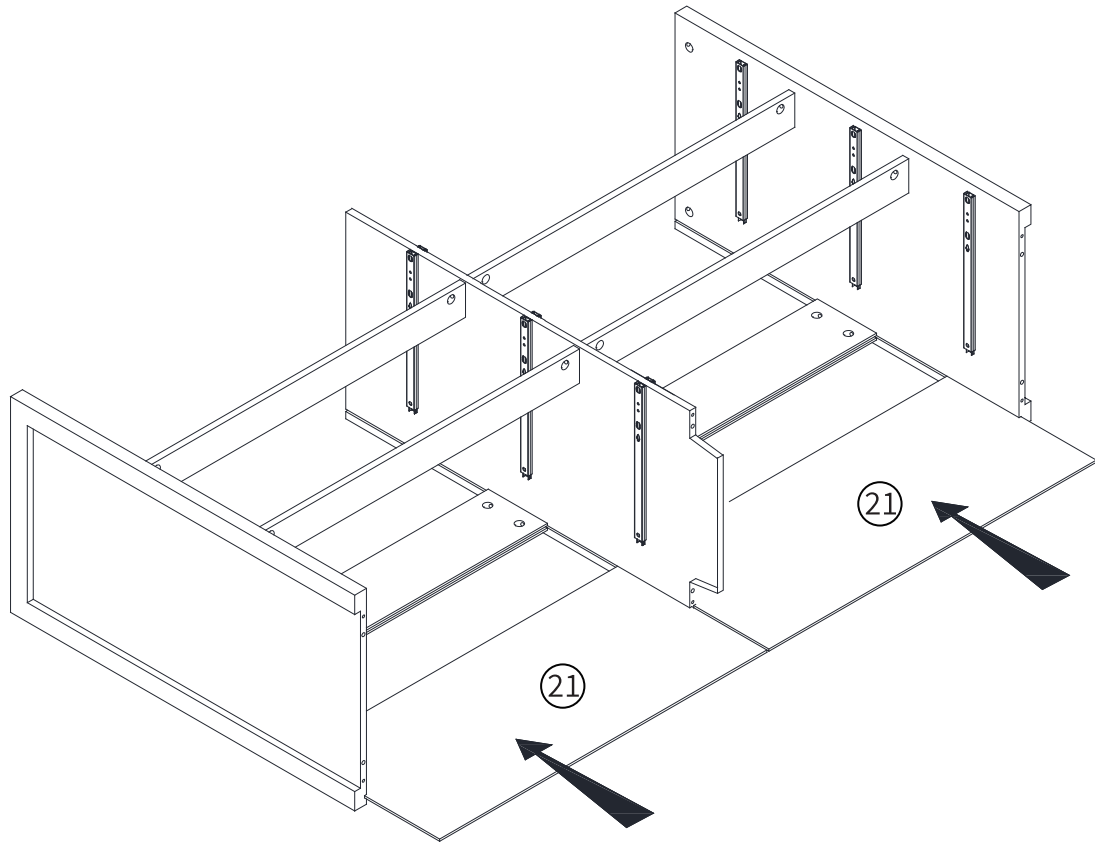
## Step 10

First, connect part ④ to part ⑤ and ⑱, place the eccentric wheel (B) in the pre-drilled hole, and tighten it clockwise with a screwdriver. Then put the wooden peg (C) in part ③ and connect part ③ to part ⑤ and ⑱. Place the eccentric (B) in the pre-drilled hole and tighten it with a screwdriver.



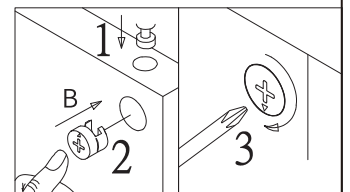
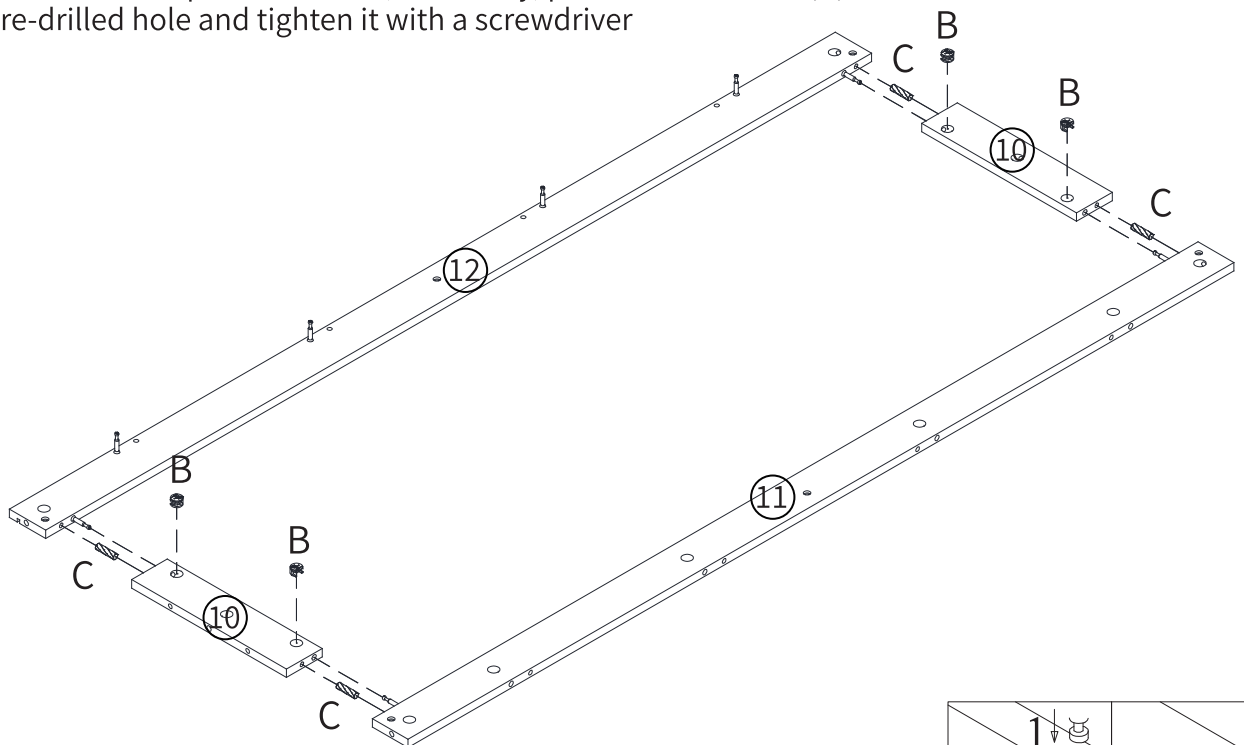
## Step 11

As shown in the figure, part ②1 is installed along the groove.



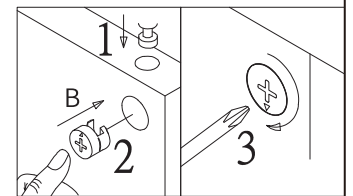
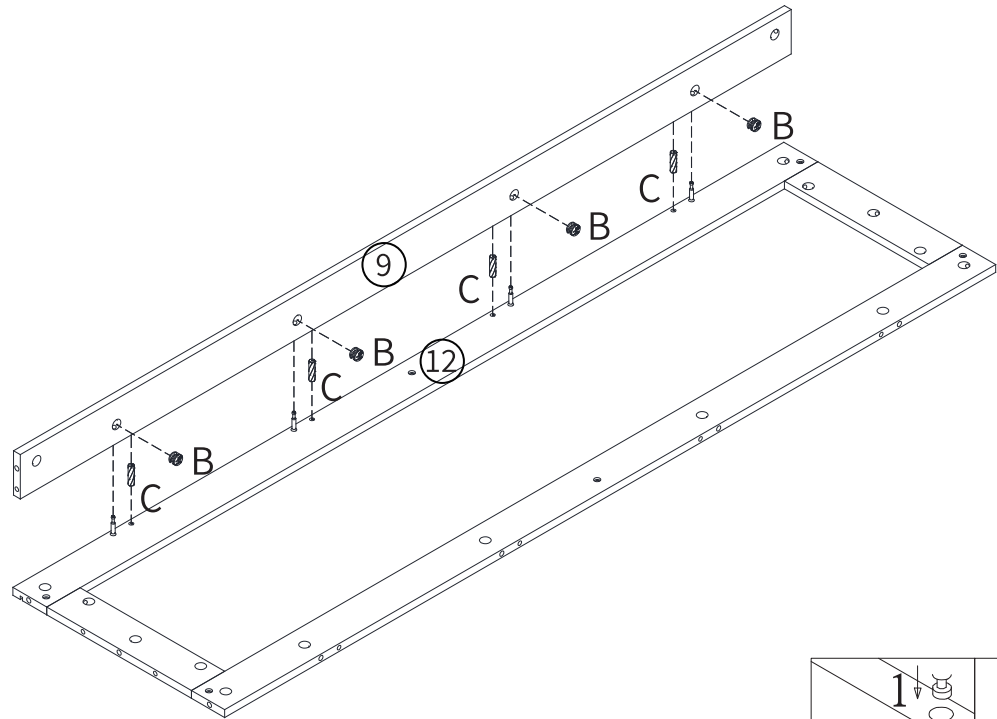
## Step 12

As shown in the figure, first, insert the wooden peg (C) into the two parts ⑩, and then connect the parts ⑩ and ⑪, ⑫. Finally, place the eccentric (B) in the pre-drilled hole and tighten it with a screwdriver



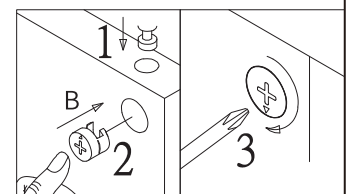
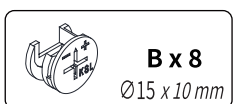
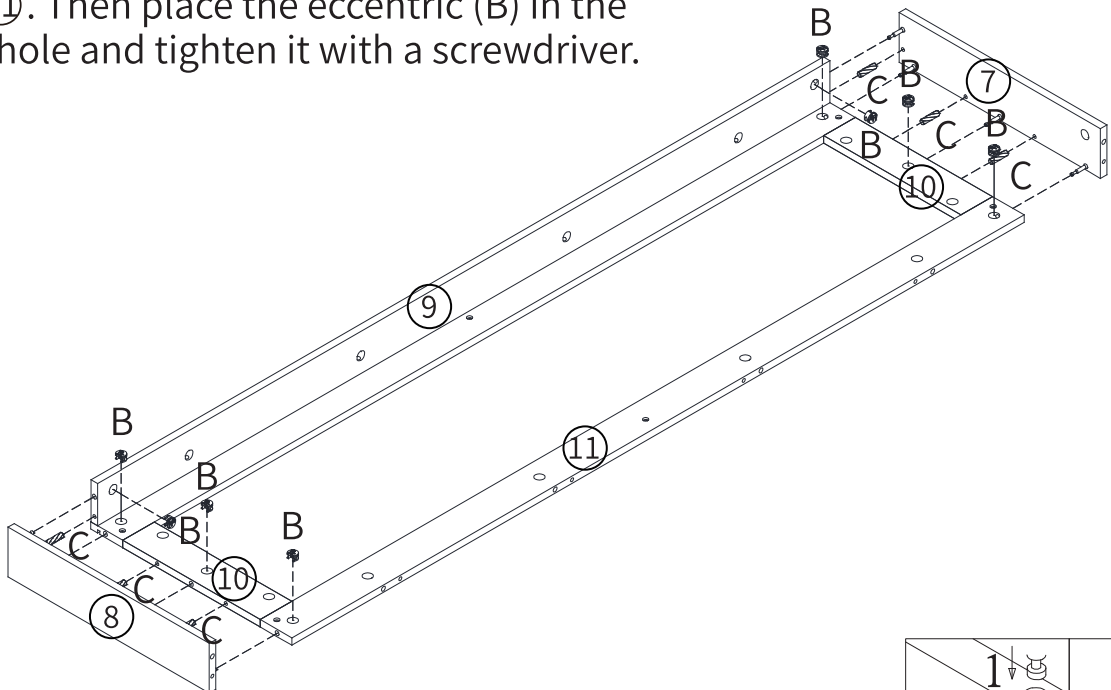
## Step 13

First, place the wooden peg (C) in part ⑫ and connect parts ⑨ and ⑫. Then place the eccentric (B) in the pre-drilled hole and tighten it with a screwdriver.



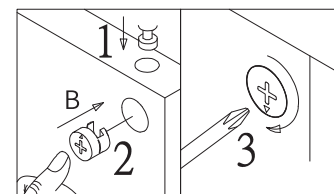
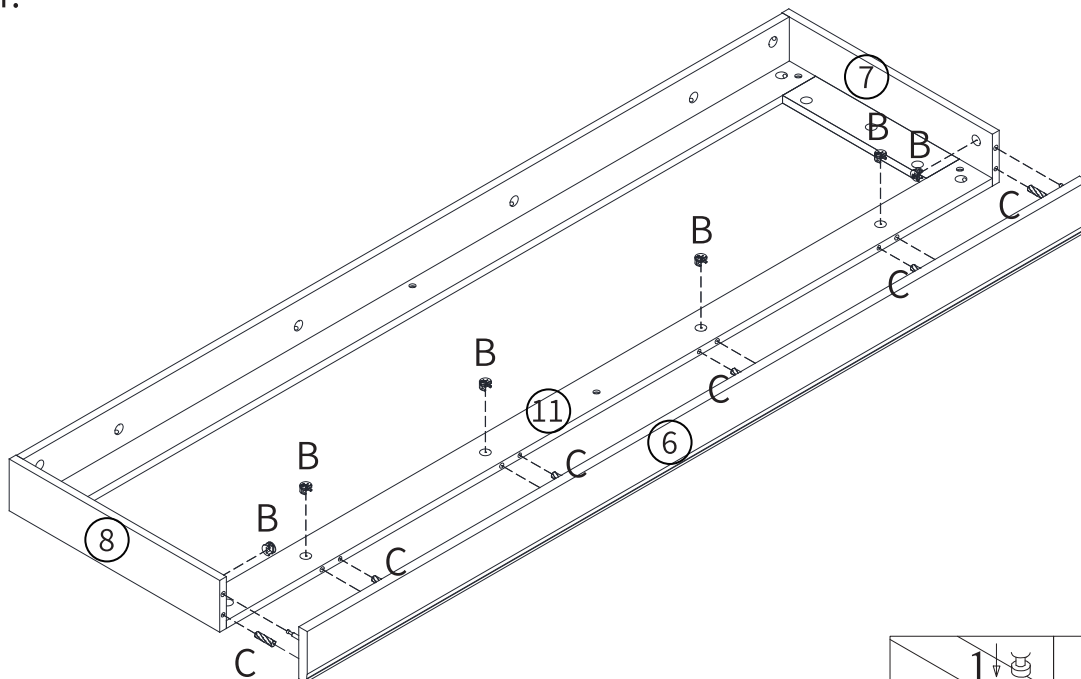
## Step 14

First insert the wooden peg (C) into part ⑦ and connect part ⑦ and part ⑨ ⑩ ⑪. Then place the eccentric (B) in the pre-drilled hole and tighten it with a screwdriver. In the same way, insert the wooden peg (C) into part ⑧ and connect part ⑧ and part ⑨ ⑩ ⑪. Then place the eccentric (B) in the pre-drilled hole and tighten it with a screwdriver.



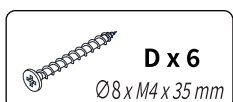
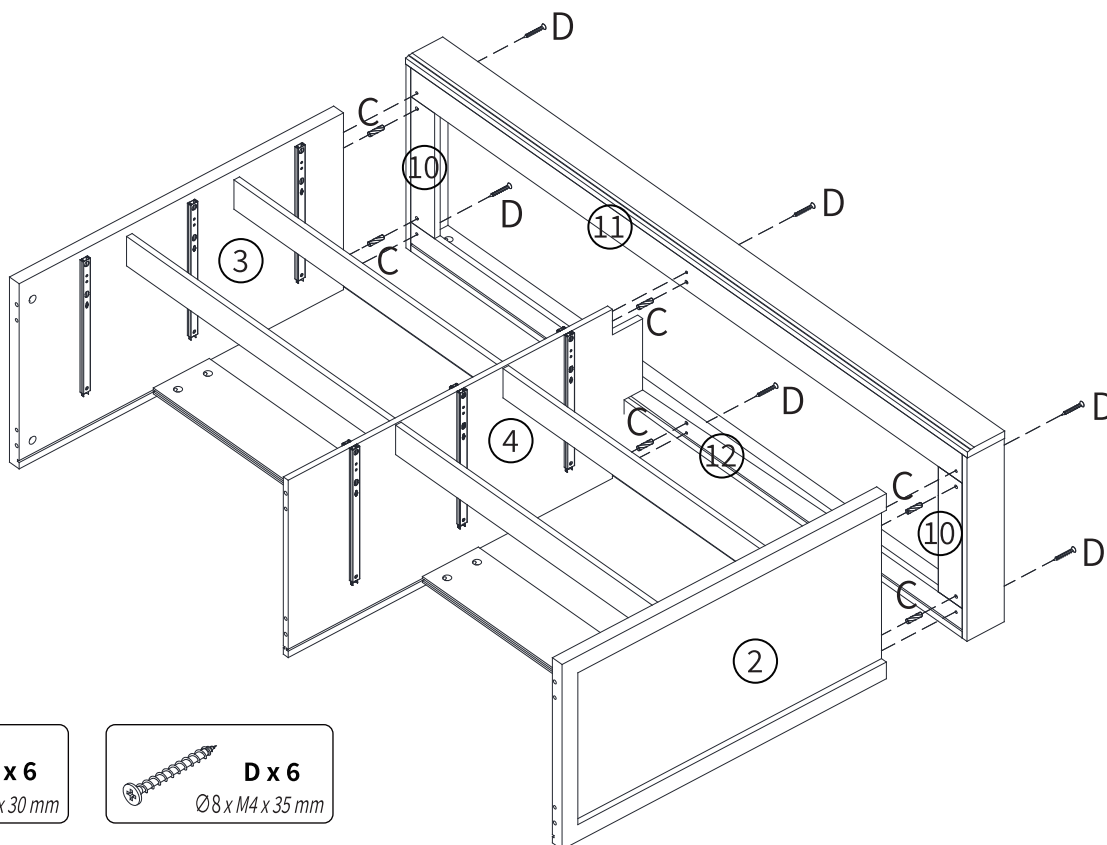
## Step 15

First insert the wooden peg (C) into part ⑥ and connect part ⑥ and part ⑦ ⑧ ⑪. Then place the eccentric (B) in the pre-drilled hole and tighten it with a screwdriver.



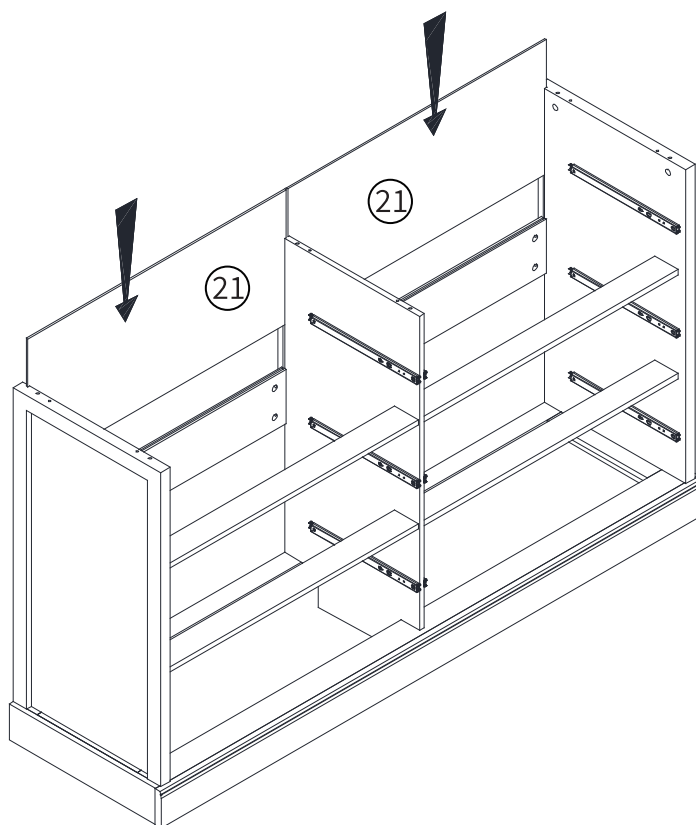
## Step 16

First insert the wooden peg (C) into part ②, ③ and ④. Then use screws (D) to connect part ② ③ ④ and part ⑩ ⑪ ⑫.



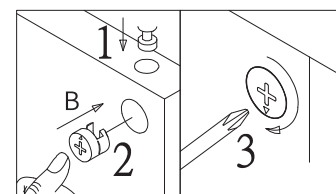
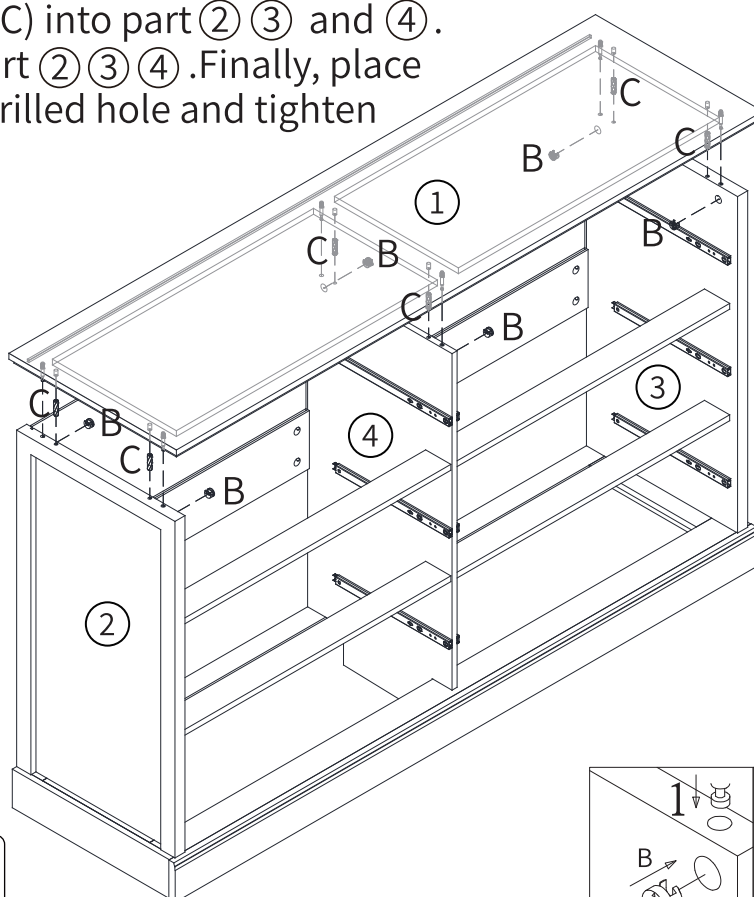
## Step 17

As shown in the figure, part ②① is installed along the groove.



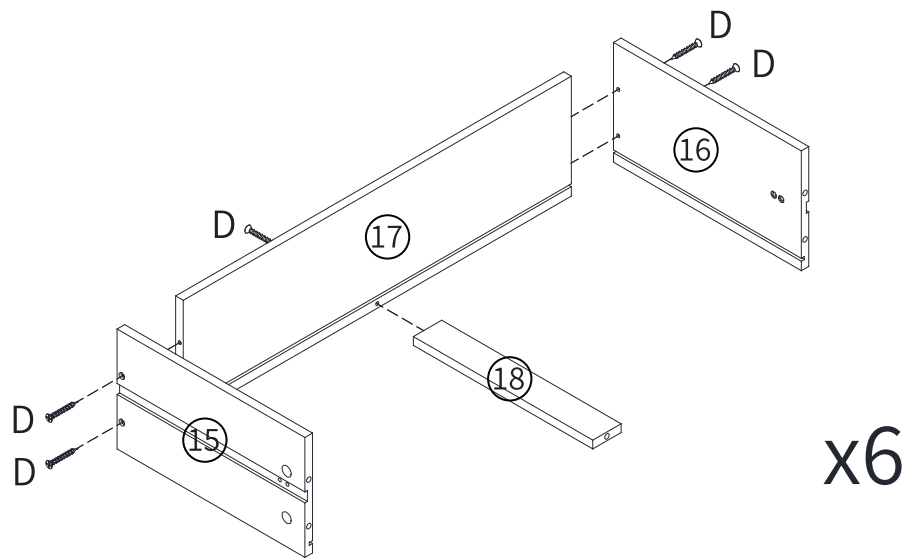
## Step 18

First insert the wooden peg (C) into part ② ③ and ④. Then connect part ① and part ② ③ ④. Finally, place the eccentric (B) in the pre-drilled hole and tighten it with a screwdriver.



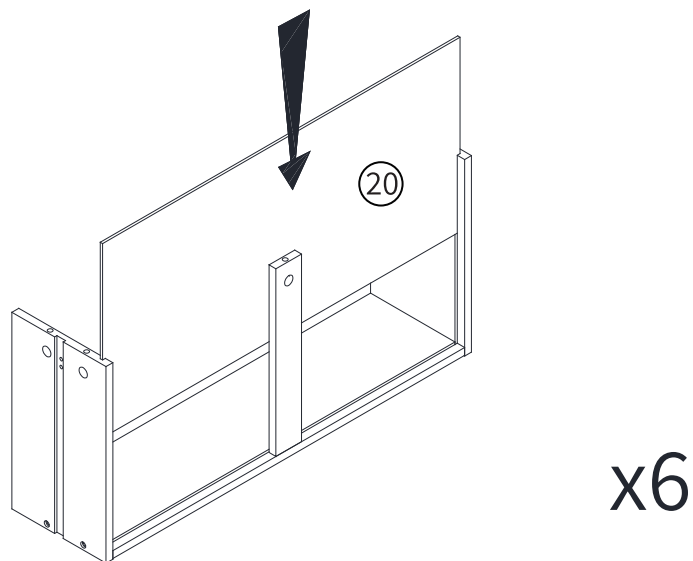
## Step 19

As shown in the figure, use screws (D) to assemble panels ⑮ ⑯ ⑰ ⑱ .



## Step 20

As shown in the figure, part ⑳ is installed along the groove.

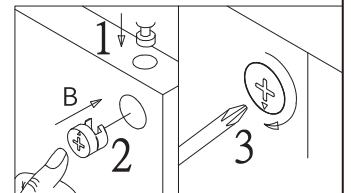
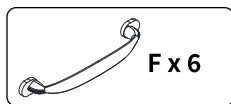
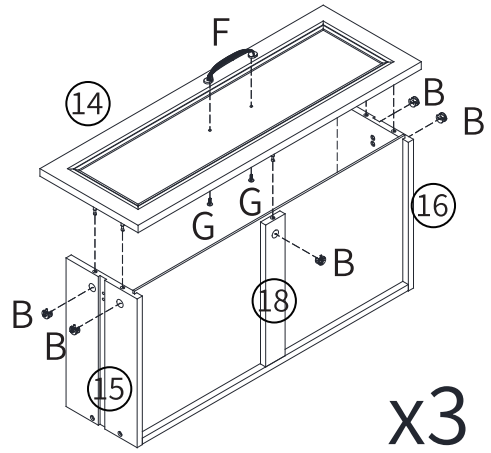
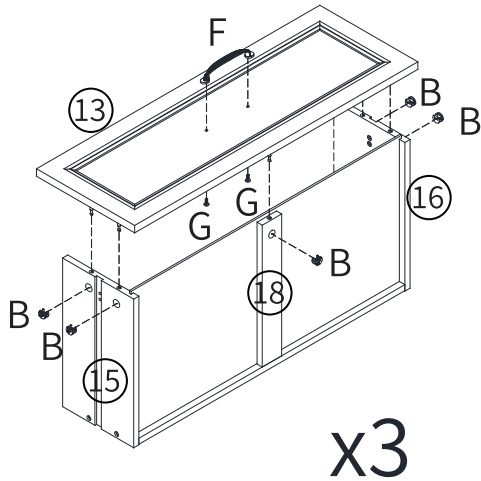


## Step 21

Use screws (G) to connect the handle (F) to part ⑬/⑭.

Then connect part ⑬/⑭ and part ⑮⑯⑰.

Finally, place the eccentric (B) in the pre-drilled hole and tighten it with a screwdriver

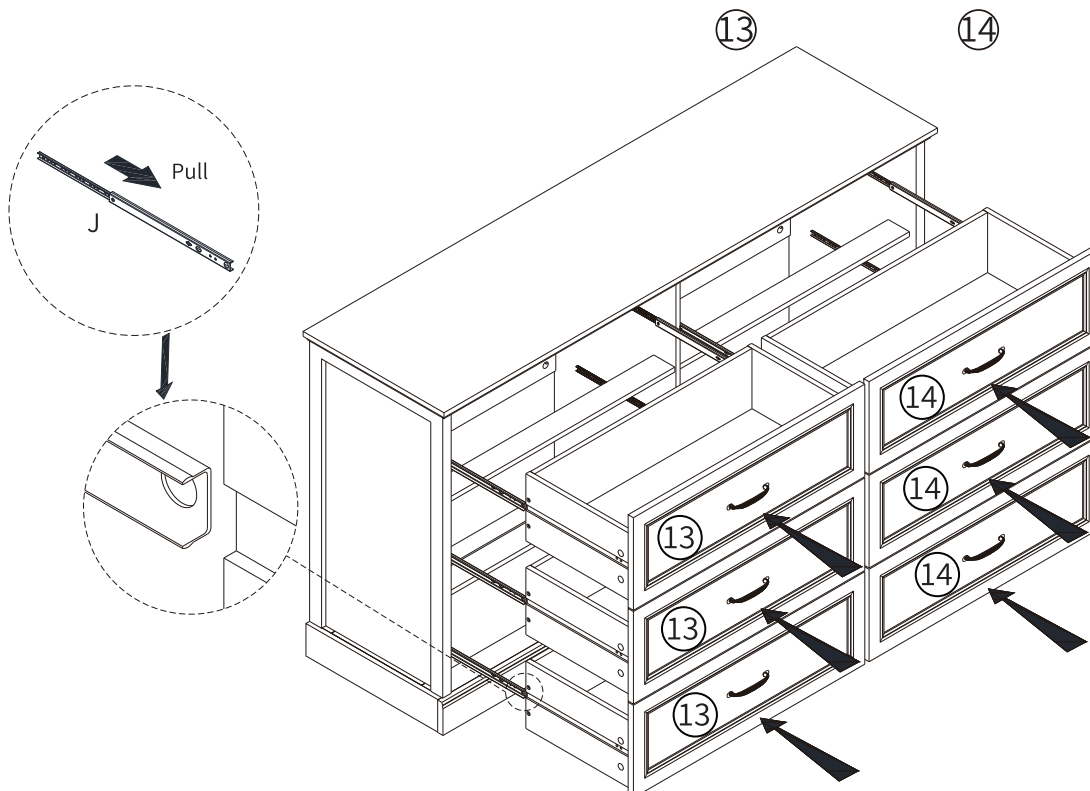


## Step 22

As shown in the figure, pull the sliding-rails as the direction of the arrow to the farthest position.

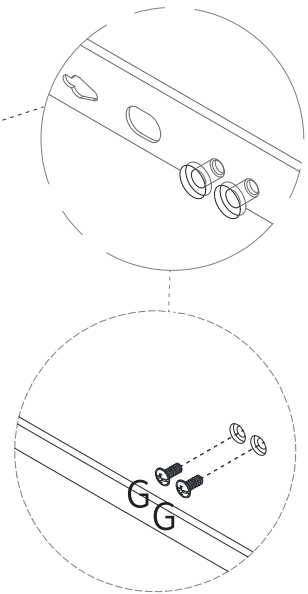
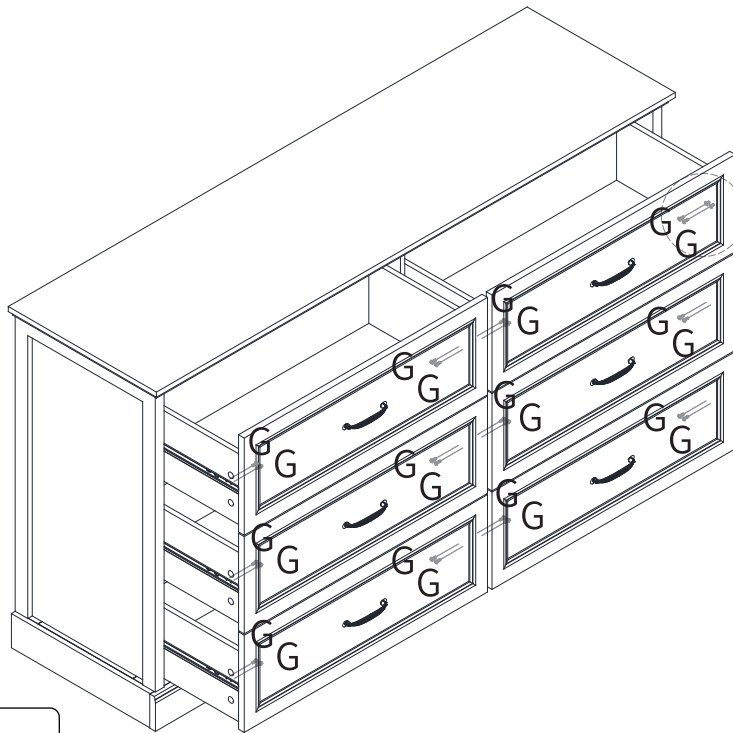
Then make sure that the sliding-rails on both sides are close to the slot at the same time.

Next, push the drawer inward. Attention, part ⑬ is on the left and part ⑭ is on the right.



## Step 23

As shown in the figure, the screw (G) can be locked after aligning the rear panel hole and the sliding rail hole through fine-tuning

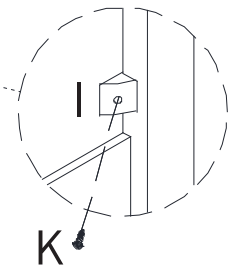
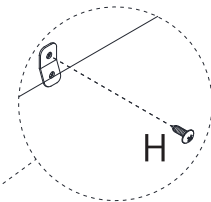
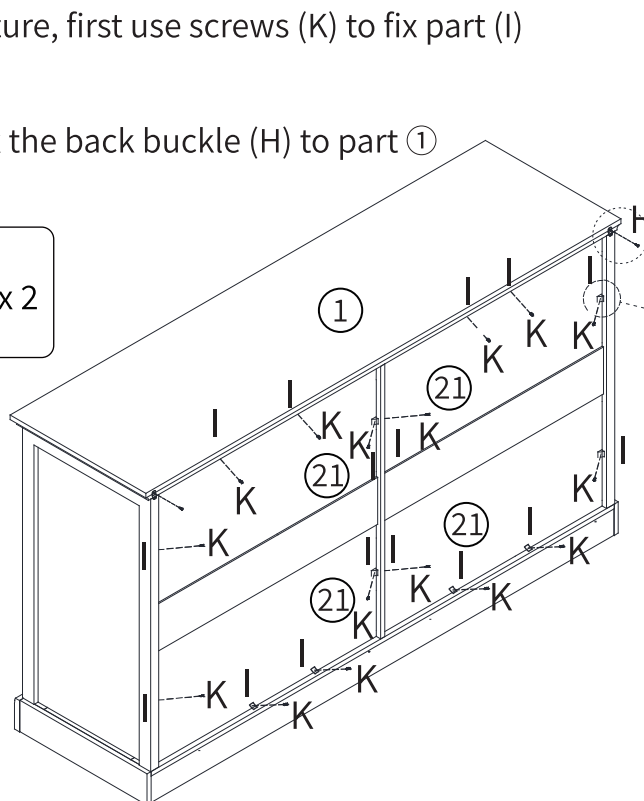
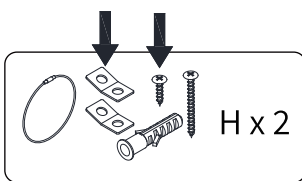


**G x 24**  
Ø9x M4 x 8 mm

## Step 24

As shown in the picture, first use screws (K) to fix part (I) to the back plate.

Use screws (H) to fix the back buckle (H) to part ①



**I x 16**  
15 x 14 x 10 mm



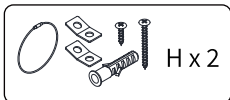
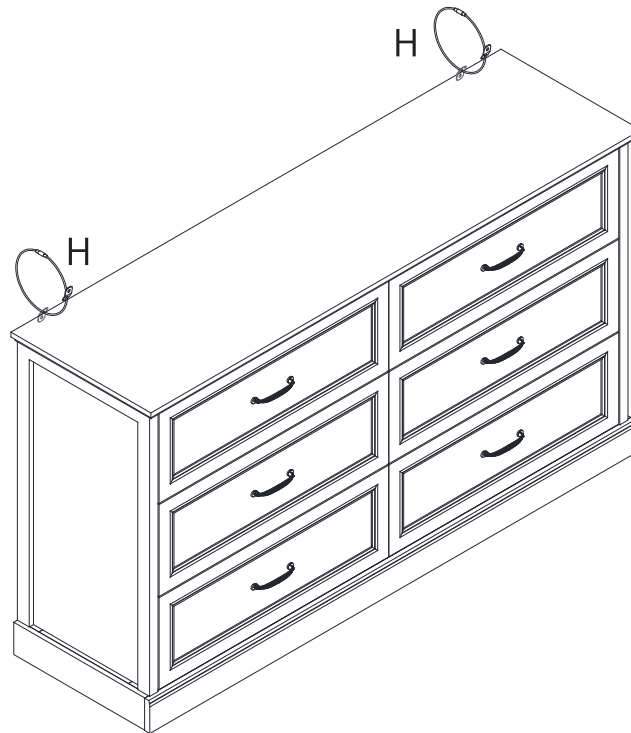
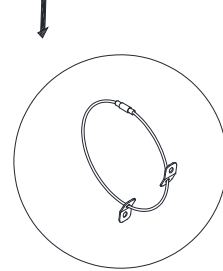
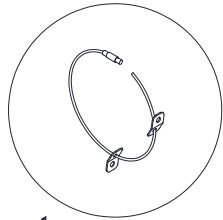
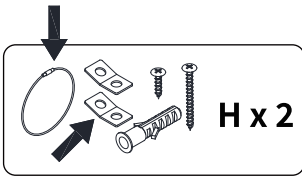
**K x 16**  
Ø6.5 x M3 x 16 mm



**H x 2**

## Step 25

Install (H) in the corresponding position as shown in the figure.



## Step 26

Fix (H) on the wall as shown in the picture.

