


TECHNICAL DATA

Rated voltage	230-240V~ 50Hz
Rated power	96 W
Rated no-load speed	1350 /min
Max. wheel diameter	56mm
Drill Diameter	3mm-13mm
Chisel and plane blade width	6mm-51mm
Protection class	 /II
Machine weight	1.20 kg
Rated operation time:	intermittent operation S3(30%)
L _{PA} : 77.6dB (no load);	75.1dB (grinding the bits) (K=3dB(A))
L _{WA} : 90.6dB (no load);	88.1dB (grinding the bits) (K=3dB(A))

OPERATING INSTRUCTIONS

NOTE: Before using the tool, read the instruction book carefully. This multi sharpener tool includes three working modules: HSS drill sharpener — Sharpens all high speed steel drill bits from 3 mm to 10mm. Knife & Scissor Sharpener — Sharpens all straight edged knives & scissors. Chisel & plane sharpener — Regrinds chisel & plane blades up to 51mm wide.

1. SWITCHING ON AND OFF (SEE A)

WARNING! This electric multi-sharpener shall be fixed on the stable position before using.

To switch on, move the on/off switch (11) to the “I” position.

To switch off, move the on/off switch to the “O” position.

2. SHARPENING HSS BITS

WARNING! Before assembling the HSS drill sharpener (2), be sure the tool is unplugged and the on/off switch (11) is in “O” position.

1) Slide the module labeled High Speed Steel Drill Sharpener onto the power unit. (SEE B1, B2)

2) Remove the clamp (3) from the clamp holder and insert the HSS drill bit (4) to be sharpened. Rotate the clamping ring (5) in clockwise direction to tighten the clamp lightly to leave the drill bit still free to move. (SEE C1, C2)

3) Place the clamp containing your drill bit into the setting slot (6), using the grooves in the side to lower it in correctly. (SEE D1, D2)

4) Move the drill bit forward up so that it lays in the “V” guide and touches the metal end stop. (SEE E)

5) Turn the drill bit until the V guide fully drops over it. All four drill bit corners should now be touching the V guide sides. (SEE E)

6) Ensure that the drill and holder are fully down in the setting slot. With the drill bit in this position, tighten the clamping ring in clockwise direction. (SEE E)

7) Lift up the “V” guide and remove the clamp and drill bit. (SEE F)

8) Transfer the clamp and drill bit into the clamp holder. (SEE G)

9) Switch the power unit on. (SEE A)

10) Move the clamp holder from side to side as indicated by the arrow on the sharpener,

securing with light finger pressure. (SEE H)

11) Remove drill bit and clamp and turn over (SEE I). Repeat Step 10.

12) Check the leading edge of both flutes are equally sharp. They should meet exactly in the middle as in J1, not J2.

13) Switch the power unit off. Before removing the module, ensure the grinding wheel has stopped.

Important note!

1) When sharpening HSS drill bits $\varnothing 3.5\text{mm}$ to $\varnothing 10\text{mm}$ (not including $\varnothing 3.5\text{mm}$) (SEE J3), make the stepped surface (a) upward, and make the plane face the HSS drill bits.

2) When sharpening HSS drill bits of $\varnothing 3\text{mm}$ to $\varnothing 3.5\text{mm}$ (including $\varnothing 3.5\text{mm}$) (SEE J4), loose the clamping ring, then turn around the clamping ring and the clamp with 180° which show the stepped surface (a) downward. In other words, make the stepped face the drill bits.

3) Make sure the length of the HSS drill bits in sharpening is more than 70mm.

3. SHARPENING KNIVES

WARNING! Before assembling the knife & scissor sharpener (8), be sure the tool is unplugged and the on/off switch (11) is in "O" position.

NOTE: This module is suitable for all straight edged, household knives and scissors only.

Do not use serrated edged blades.

1) Slide module labeled Knife & Scissor Sharpener (8) on to the power unit.

2) Switch the power unit on.

3) Hold the knife handle towards you and insert the handle end of the blade into knife sharpening slot (10). (SEE K)

4) As soon as the blade touches the grinding wheel, draw it with light steady pressure across the wheel to the tip, then remove. Do not press hard.

5) Insert the second side of the blade into the other top guide slot and repeat step 4. (SEE L)

6) Repeat sharpening each side in turn until a clean sharp edge is attained.

7) Switch the power unit off. Before removing the module, ensure that the grinding wheel has stopped.

4. SHARPENING SCISSORS

WARNING! Before assembling the knife & scissor sharpener (8), be sure the tool is unplugged and the on/off switch (11) is in "O" position.

NOTE: This module is suitable for all straight edged, household knives and scissors only.

Do not use serrated edged blades.

1) Slide module labeled Knife & Scissor Sharpener (8) onto the power unit.

2) Switch the power unit on.

3) Open the scissors fully.

4) Slide the first scissor blade through the scissor sharpening slot. Keep the pivot of the scissors and other blade to right hand side. (SEE M)

5) Draw the blade across the grinding wheel from pivot to tip. Use a light steady pressure, do not press too hard.

6) Remove and turn scissors over to sharpen the second blade. Keep the pivot to the right and sharpen from pivot to tip. (SEE N)

7) Repeat if necessary, until clean sharp edges are achieved.

8) Switch the power unit off. Before removing the module, ensure that the grinding wheel has stopped.

5. SHARPENING CHISEL&PLANE BLADES

WARNING!Before assembling the chisel&plane sharpener(12), be sure the tool is unplugged and the on/off switch (11) is in "O" position.

1)Slide the module labeled Chisel & Plane Sharpener(12) onto the power unit.

2)Place the blade against the back lip of the plate. The magnet(13) helps to hold it in place.(See O)

3) The sharpening angle must match the existing beveled angle on the blade tip. Adjust, if necessary.

4)To alter the angle:

①Loosen the angle adjusting knob (15) in anticlockwise direction.

②Adjust the plate.The sharpening angle is indicated by the small arrow.The adjustable grinding angle is from 20° to 40°.Make sure the blade edge touches the grinding wheel.

③Tighten the angle adjusting knob. (See P)

5) Switch the power unit on.

6)Slide the blade and plate with light steady pressure back and forth across the grinding wheel in a continuous motion.Do not hold the blade stationary.This causes irregular sharpening. (See Q)

7)Gradually adjust the blade down the plate while sharpening (See R). Do not press hard. Grind gradually, repeating the step.

8)Remove the blade and make sure the beveled edge and tip are evenly sharp. If not, adjust the grinding angle. It is important that the sharpening angle matches the existing beveled angle of the blade.This avoids removing too much metal unnecessarily and keeps plane blades at their optimum shaving angle. (See S)

9)When sharpening thin chisel blades,place the small chisel guide onto the plate to act as a spacer and sharpen as before. (See T)

10)Switch the power unit off.Before removing the module,ensure the grinding wheel has stopped.

11) Recommend that after grinding,the blade tip is honed on an oil stone.

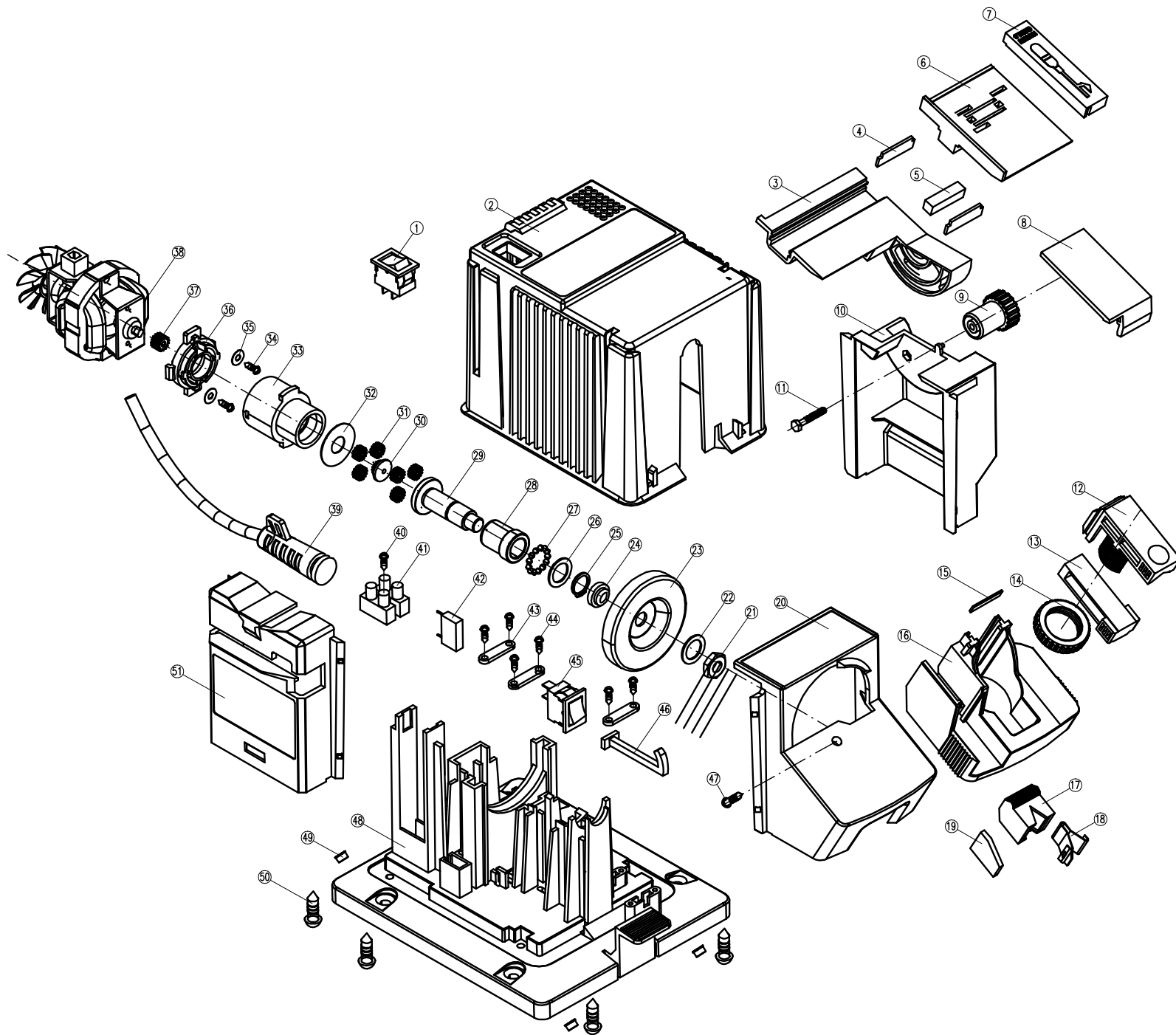
MAINTENAN CE

Remove the plug from the socket before carrying out any adjustment,servicing or maintenance.

Your power tool requires no additional lubrication or maintenance.

There are no user serviceable parts in your power tool.Never use water or chemical cleaners to clean your power tool.Wipe clean with a dry cloth.Always store your power tool in a dry place.Keep the motor ventilation slots clean.Keep all working controls free of dust. Occasionally you may see sparks through the ventilation slots.This is normal and will not damage your power tool.

If the supply cord is damaged,it must be replaced by the manufacturer,its service agent or similarly qualified persons in order to avoid a hazard.



51	磨刀支架	1	
50	十字槽盘头自攻螺钉ST3.7X16-F-H	4	
49	减震垫	4	
48	箱体底座	1	
47	十字槽盘头自攻螺钉ST3X6-F-H	1	
46	开关推杆	1	
45	翘板开关(自动复位)	1	
44	十字槽盘头自攻螺钉ST3X10-F-H	6	
43	推杆压板	3	
42	电容	1	
41	接线柱台	1	
40	十字槽盘头自攻螺钉ST3X16-F-H	1	
39	电源线插头连接套	1	
38	串激电机DW5412-B	1	连风扇
37	电机齿轮	1	
36	齿轮箱盖	1	
35	小垫圈 3	2	
34	十字槽盘头螺钉M3 X8	2	
33	齿箱	1	
32	齿圈盖板	1	
31	行星齿轮	6	
30	齿架	1	
29	多功能主轴	1	
28	含油轴承	1	
27	钢珠 $\phi 3$	14	
26	钢珠垫片	1	
25	轴用弹性挡圈 $\phi 11$	1	
24	砂轮定位圈	1	
23	$\phi 56$ 金刚砂轮	1	
22	螺母垫片	1	
21	六角细牙螺母M8X1-左	1	
20	磨钻固定支架	1	
19	钻头定位片	1	
18	角度定位片	1	
17	角度定位块	1	
16	磨钻旋转支架	1	
15	钻头挡片	1	
14	锁紧螺母	1	
13	锁紧块	1	
12	钻头槽	1	
11	六角头螺栓全螺纹M3X20	1	
10	磨刀固定支架	1	
9	锁紧按钮	1	
8	透明防护板	1	
7	挡板	1	
6	移动板	1	
5	磁铁	1	
4	磁铁挡片	1	
3	磨刀旋转支架	1	
2	箱体上罩	1	
1	翘板开关	1	
序号	名称	数量	备注

S1D-DW01-56
多功能磨削机

上海东炜电器有限公司
爆炸图