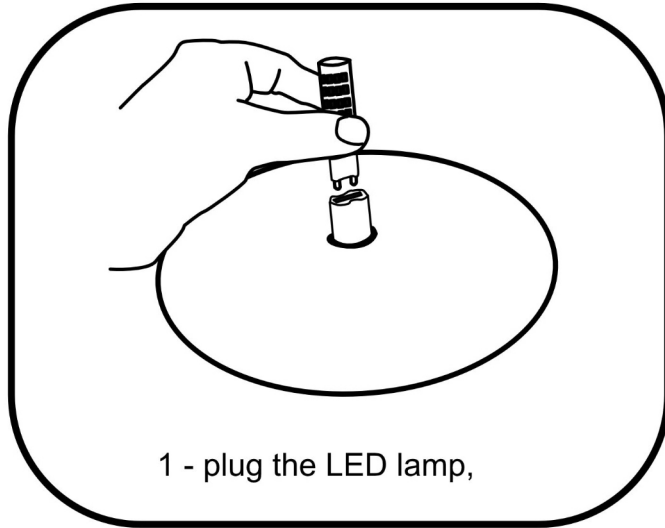
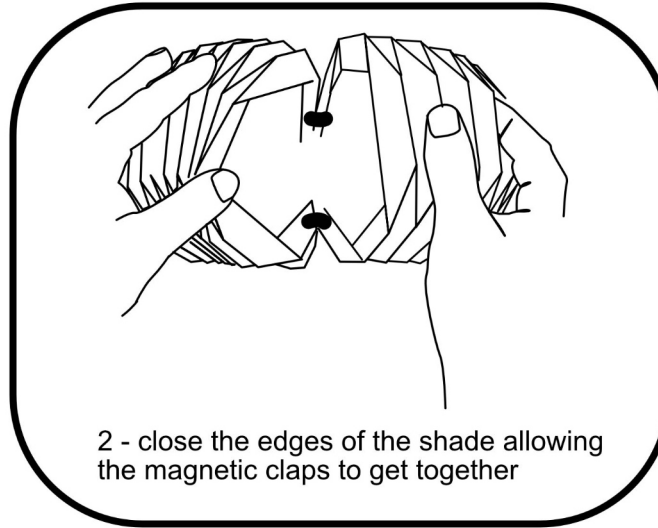


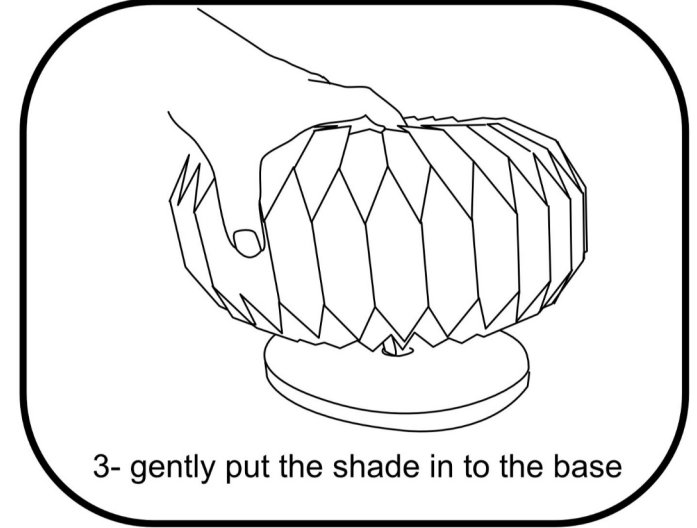
# STUDIO PLEAT ORIGAMI TABLE LAMP HOW TO ASSEMBLE:



1 - plug the LED lamp,



2 - close the edges of the shade allowing the magnetic claps to get together



3- gently put the shade in to the base

## USE ONLY LED LIGHT

1. LIGHT BULB : G9 LED Bulb Dimmable 4W
2. CLEANING: Use a dry and soft cloth and gently clean the pleats of the shade.
3. Never wet the paper
4. Place in a dry shade area, away from humidity that damage the paper.

### Product Disclaimer: TABLE LAMPS

This table lamp is designed for indoor use only. Please ensure it is kept away from moisture and extreme temperatures. The wood base is crafted from natural materials, and variations in grain and color may occur, making each lamp unique. The dimmable switches are designed to work with compatible dimmer LED lamp bulbs G9 2700k 4W. The LED lamp is energy-efficient and long-lasting. However, please exercise caution when handling it, as it may become warm during operation. Please read and follow the provided user manual for proper assembly, installation, and usage instructions. Keep this product out of the reach of children and pets.

*Thanks for buying at*  
**STUDIO  
PLEAT**