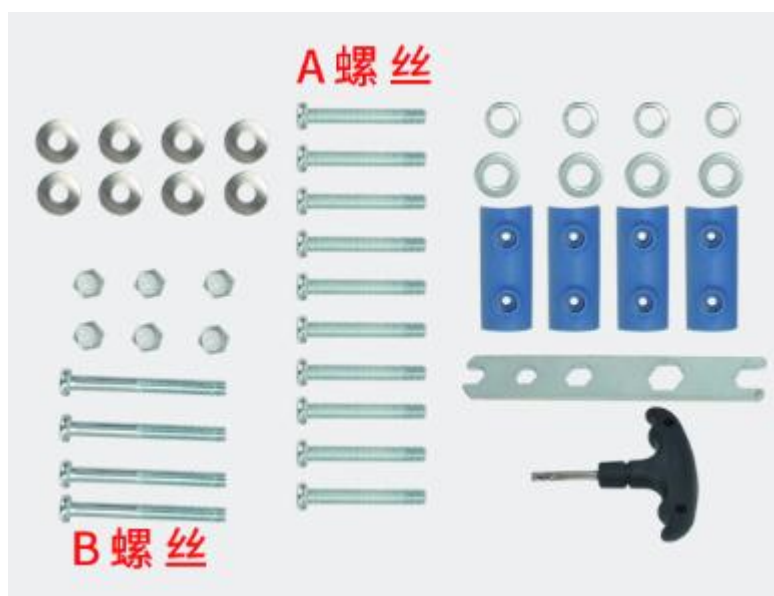


Installation Steps



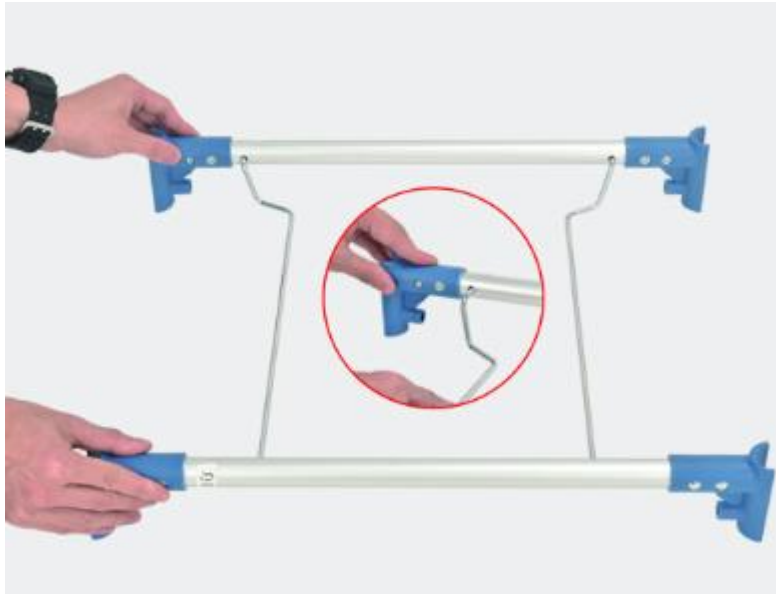
1. Accessories

- | | | | | | |
|-----------------------|-------------|-------------|-------------|-----------------|----|
| 2x Side Frame | 2x Crossbar | 1x Backrest | 1x Footrest | 1x Bucket Frame | 1x |
| Bucket | | | | | |
| 1x Blue Sitting Board | 4x Wheels | | | | |



2. Screw Accessories

- | | | | | |
|-------------------------|-------------------|--------------|---------------------------|------------------|
| 4x Blue Plastic Cover | 10xA Screws | 4xB Screws | 6x Nuts | 4x Metal Washers |
| 8x Metal Curved Spacers | 4x Spring Spacers | 1x Allen Key | 1x Multifunctional Wrench | |



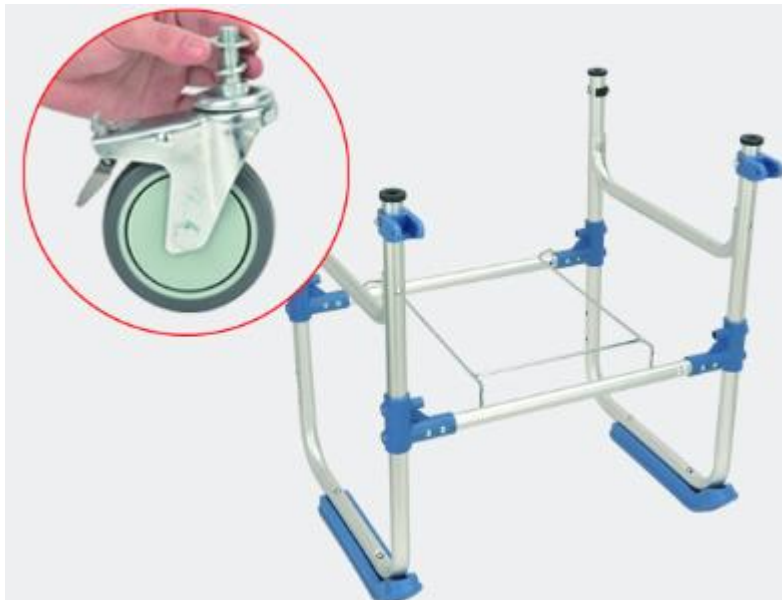
3. Insert the bucket rack into the front and rear cross bars. Note that the hole spacing of the front and rear crossbars are different. Note that the crossbars have front and rear distinctions.



4. Set up one side of the main frame and cover it tightly with the blue plastic cover.



5. After the plastic parts on both sides are fixed, use an Allen key to tighten the **A screw**.



6. Turn the main frame over. When installing the wheels, please make sure to put on the **metal washers**, as shown in the picture.



7. Put the brake on the wheel first, and then tighten it by hand.



8. Set the backrest into the main frame.



9. Install the armrests, using **B screws**. Note that both sides are fitted with curved metal spacers.



10. Use the **B screw** to cover the metal arc washer and nut, and then tighten the screws with an Allen key and a multifunctional wrench.



11. Put the pedal inside the two blue plastic clips on the front foot of the main frame.



12. Use **A screw** and nut, then use an Allen key and universal wrench to tighten, as shown in the picture.



13. The wheels and pedals are installed as shown in the picture.



14. Put the bucket directly on the bucket frame, and the seat plate is directly stuck on the rear crossbar.



15. Installation is complete.

Warm Tips

1. Before use, please check whether the screws are loose, whether the screw device is damaged, whether the backrest, armrest, and bracket are firm or damaged, etc.
2. In order to maintain environmental hygiene, please clean the bucket in time after use, and dry it for the next use.