

# Owner Manual



5 : 00

---

estimated  
assembly time



1 or more

---

people required

Ok, let's  
get started!



- Put on mood music!
- To prevent damage to product, use the clean side of package carton or rug as working surface.
- In the event of missing or damaged parts, delivery problems etc., please reach out to our team.  
We will be happy to fix the problem!

# care guide

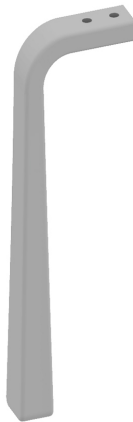
- Clean regularly with a soft and dry cloth.
- To protect finish, avoid use of abrasive cleaners.
- Wipe up spills immediately. Please!



product  
parts



(A)  
Table Top  
x1



(B)  
Table legs  
x3

# what's included



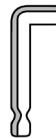
(C)- Plain Washer  
(8.5mm)  
x6



(D)- Lock Washer  
(8.5mm)  
X6



(E)- Bolt  
(8 x 35mm)  
x6



(F)- Allen Key  
x1

**RS**

Red sticker

**YS**

Yellow sticker

**GS**

Green sticker

## assembly instructions

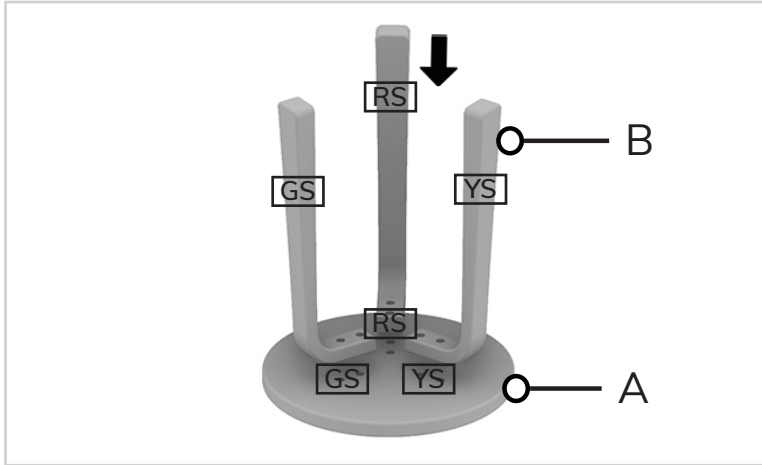
Friendly Tip: Take a deep breath going in. This may be a tricky part, but nothing too overwhelming. Just follow these steps to the T and the outcome will be worth it!



- ⓘ While assembling the product, tighten the bolts up to 50%. Once all parts are in place, only then fully tighten the bolts.

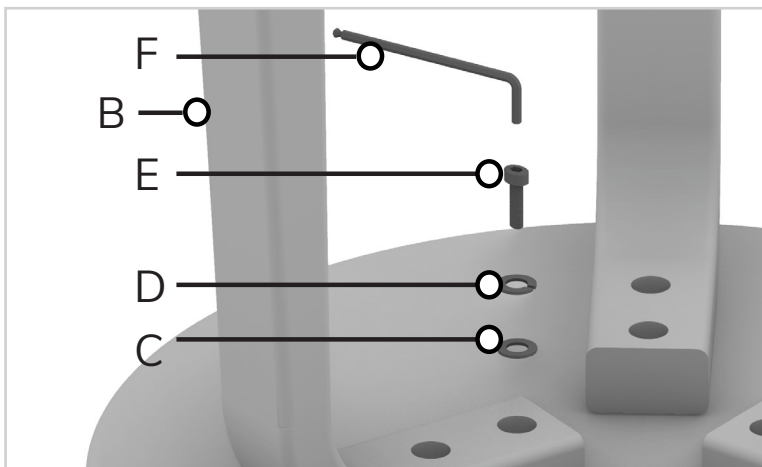
## step 1:

Turn the tabletop (A) upside down. Align the slots on legs (B) align to the slots on the table top (A). Ensure that the stickers on (B) match with their counterparts on (A).



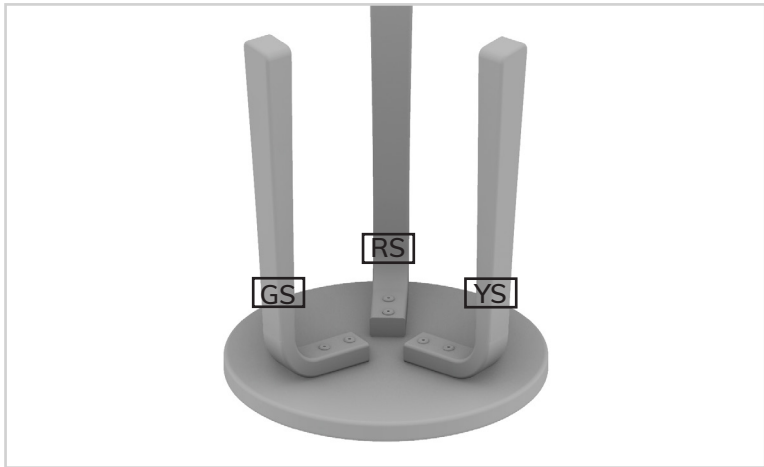
## step 2:

Now, fix one leg in place using washer (C), lock washer (D) and bolt (E). Tighten all points using allen-key (F).



step 3:

Repeat step 2 with the remaining legs.





---

**Voila! Your end table is now assembled and secure!**