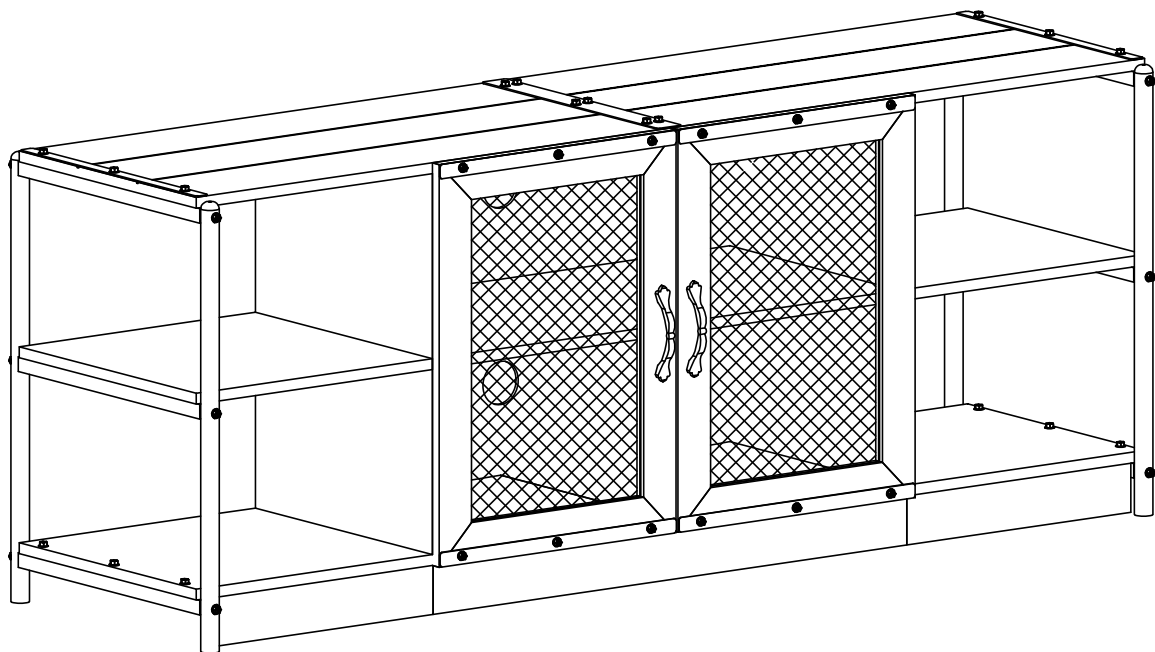


TV CABINET

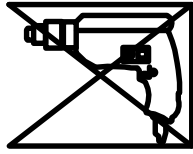
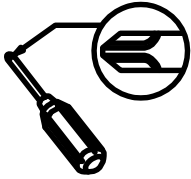
Assembly Instructions



YOU NEED

1. Tools required

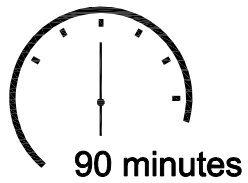
A Phillips head screw driver is required for the assembly of this product. (not included)
Electric tool should not be used to assemble this product.



2. Two people are needed



3. Installation takes 90 minutes



4. Technical Specifications

Brand	
Material	
Max weight capacity	350lbs

Tips!



1. Check all the components & screws are intact before assembling .
2. If you notice any pieces are missing or damaged please do not assemble and contact us immediately .
3. Send an email with your question/issue, and we will respond within 24 hours.
Customer Service Team: support@idealhouse.vip

IMPORTANT SAFETY INFORMATION

- Please carefully read the following instructions and caution warnings before assembling the product.
- Following this guide will ensure that you install, use and maintain the product properly.
- Please keep this installation and user manual/instructions for future reference in case you need to disassemble the product.
- Never allow children to climb onto the product. Ensure that you have special safety measures when children are around on their own.
- Be sure to check that all parts of the product are intact after you open the package.
- Do not assemble if you notice serious damage such as cracks or bends.
- During installation, please use work gloves for hand safety.
- Please assemble the unit on carpeted floor or the flat cardboard box to avoid scratching the surface or your floor while assembling on the floor.
- To assemble, please use the complimentary installation tools (Phillips screwdriver). Pay more attention to the direction of components at each steps.
- It is recommended that two people work together to assemble the product.

RETURN POLICY

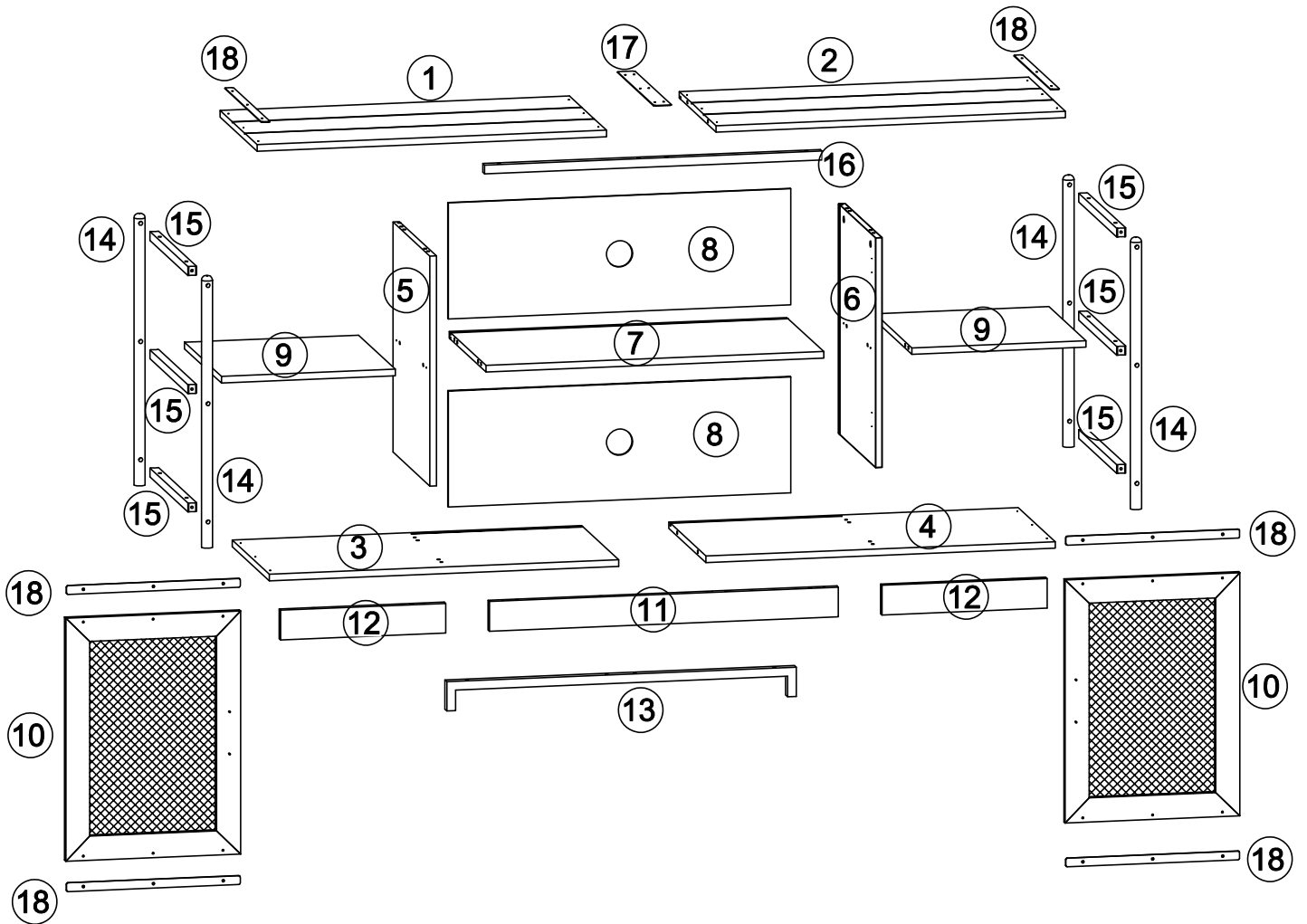
- Please contact us directly within 30 days after receiving.
- Ensure the product is in a good condition with the original box and all original certificates of purchase, manuals, and accessories attached.

How to maintain your product

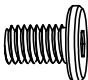


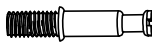

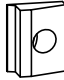
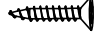
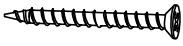

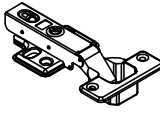





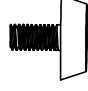
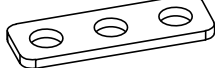

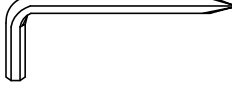
- Check the screws of the product are not loose from regular use.
- Do not use sharp instruments, rubbing alcohol, corrosive chemicals, or abrasive cleaners to clean the item.

COMPONENTS ID Nr.

Part Nr.	Qty	Part Nr.	Qty	Part Nr.	Qty
1	1pcs	7	1pcs	13	1pcs
2	1pcs	8	2pcs	14	4pcs
3	1pcs	9	2pcs	15	6pcs
4	1pcs	10	2pcs	16	1pcs
5	1pcs	11	1pcs	17	1pcs
6	1pcs	12	2pcs	18	6pcs



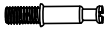
HARDWARE LIST

<p>A x 4</p>  <p>M6x12mm</p>	<p>B x 20</p>  <p>M6x30mm</p>	<p>C x 28</p>  <p>Ø8x30mm</p>	<p>D x12</p>  <p>Ø6x35mm</p>
<p>E x 12</p>  <p>Ø15*12</p>	<p>F x 8</p>  <p>15*15*12</p>	<p>G x 8</p>  <p>Ø3*18mm</p>	<p>H x 8</p>  <p>Ø4*32mm</p>
<p>I x 24</p>  <p>Ø3.5*14mm</p>	<p>J x 4</p> 	<p>K x 2</p> 	<p>L x 4</p>  <p>M4*18mm</p>
<p>M x 12</p>  <p>M6x35mm</p>	<p>N x 30</p>  <p>Ø6x12mm</p>	<p>O x 4</p>  <p>Ø6*48mm</p>	<p>P x 2</p>  <p>Ø19*6mm</p>
<p>Q x 2</p>  <p>48*16*2.5mm</p>	<p>R x 4</p>  <p>Ø10*2mm</p>	<p>S x 1</p>  <p>m4</p>	

PRODUCT ASSEMBLY

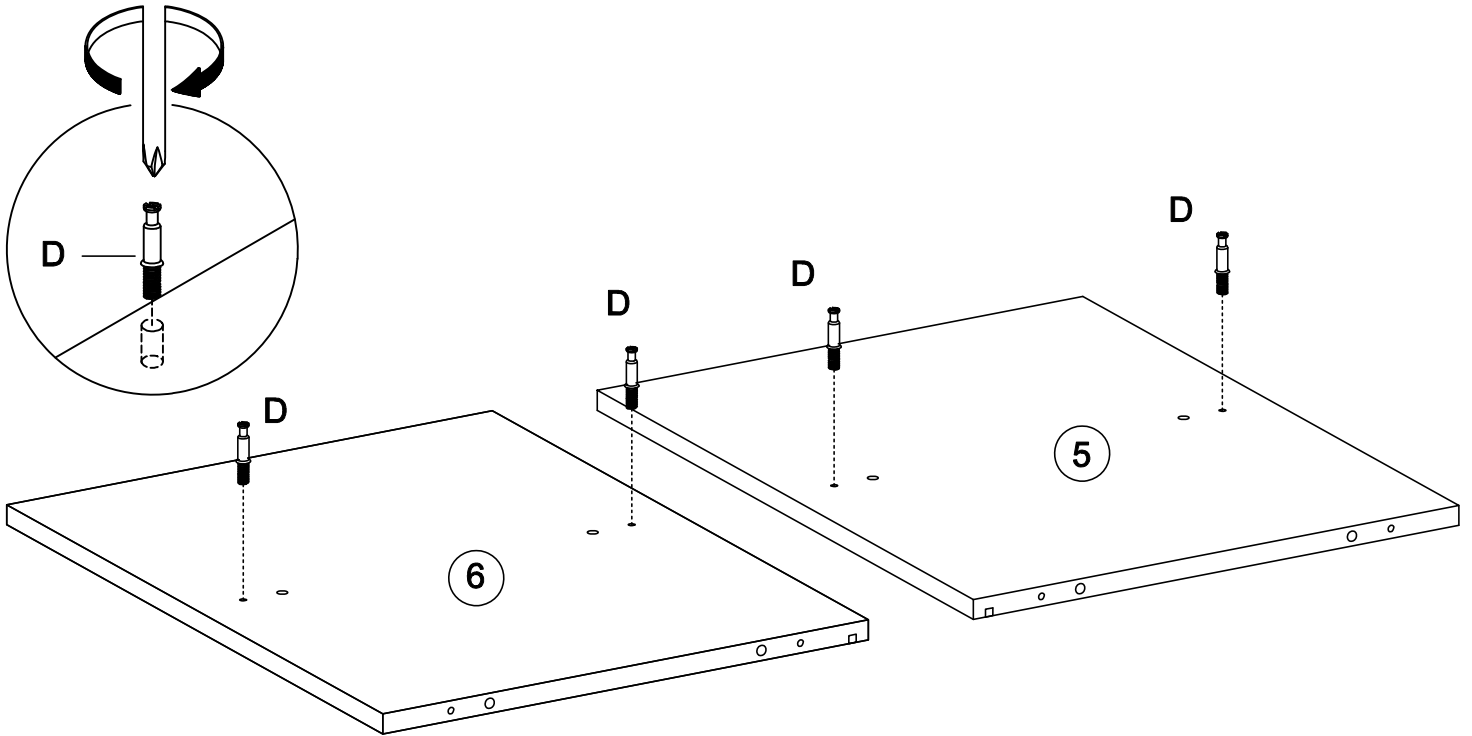
1

Ø6x35mm



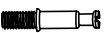
D x 4

Tighten the cam bolt (D) into the board(5) and (6).



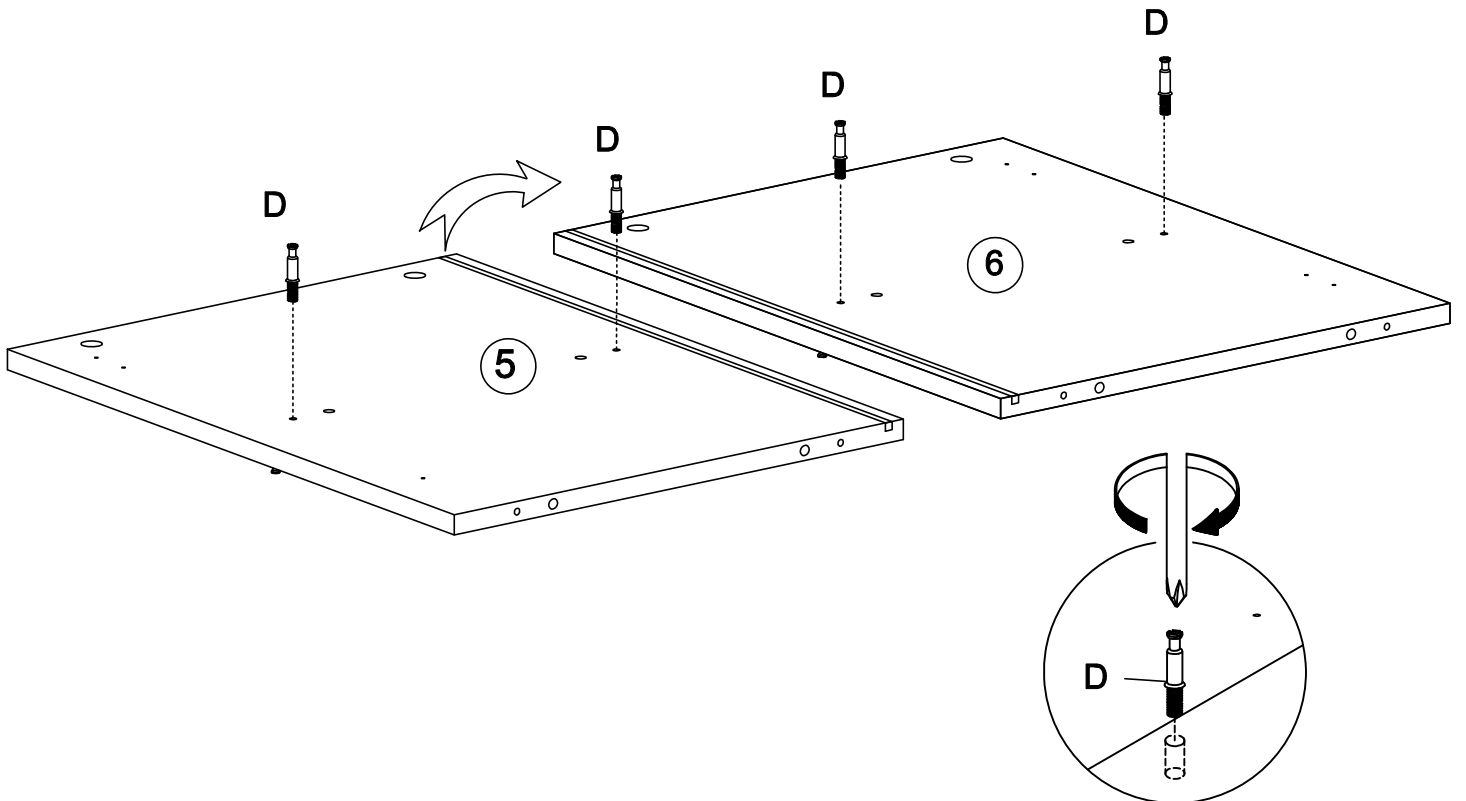
2

Ø6x35mm



D x 4

Tighten the cam bolt (D) into the board(5) and (6).



PRODUCT ASSEMBLY

3

Ø15x12mm



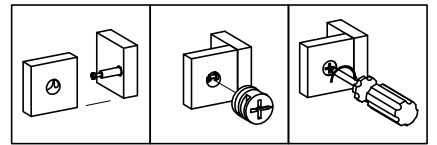
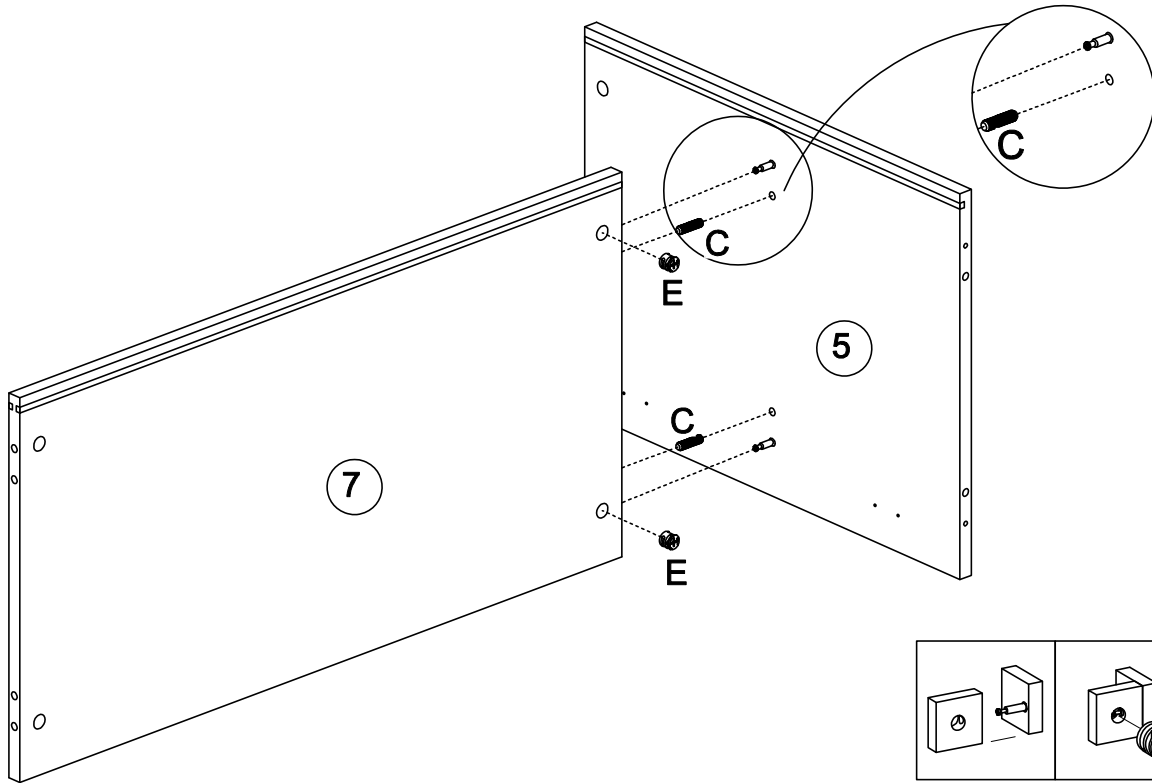
E x 2

Ø8x30mm



C x 2

Attach the boards (5) and (7) with the cam locks (E) and wood dowel(C) by the screwdriver.



4

Ø15*12mm



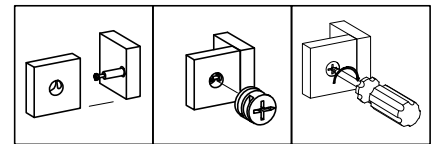
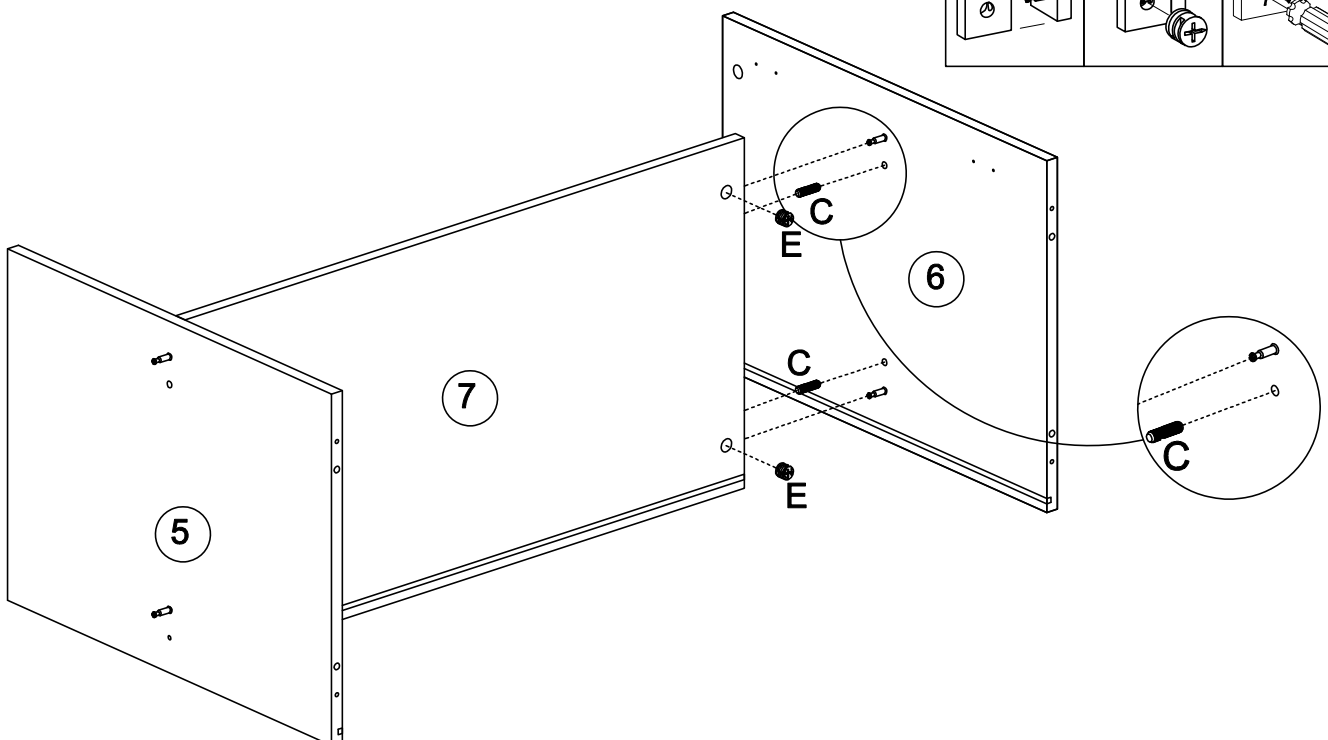
E x 2

Ø8x30mm



C x 2

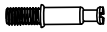
Insert the wood dowels (C), attach the boards (6) and (7) with the cam locks (E) by the screwdriver.



PRODUCT ASSEMBLY

5

Ø6*35mm



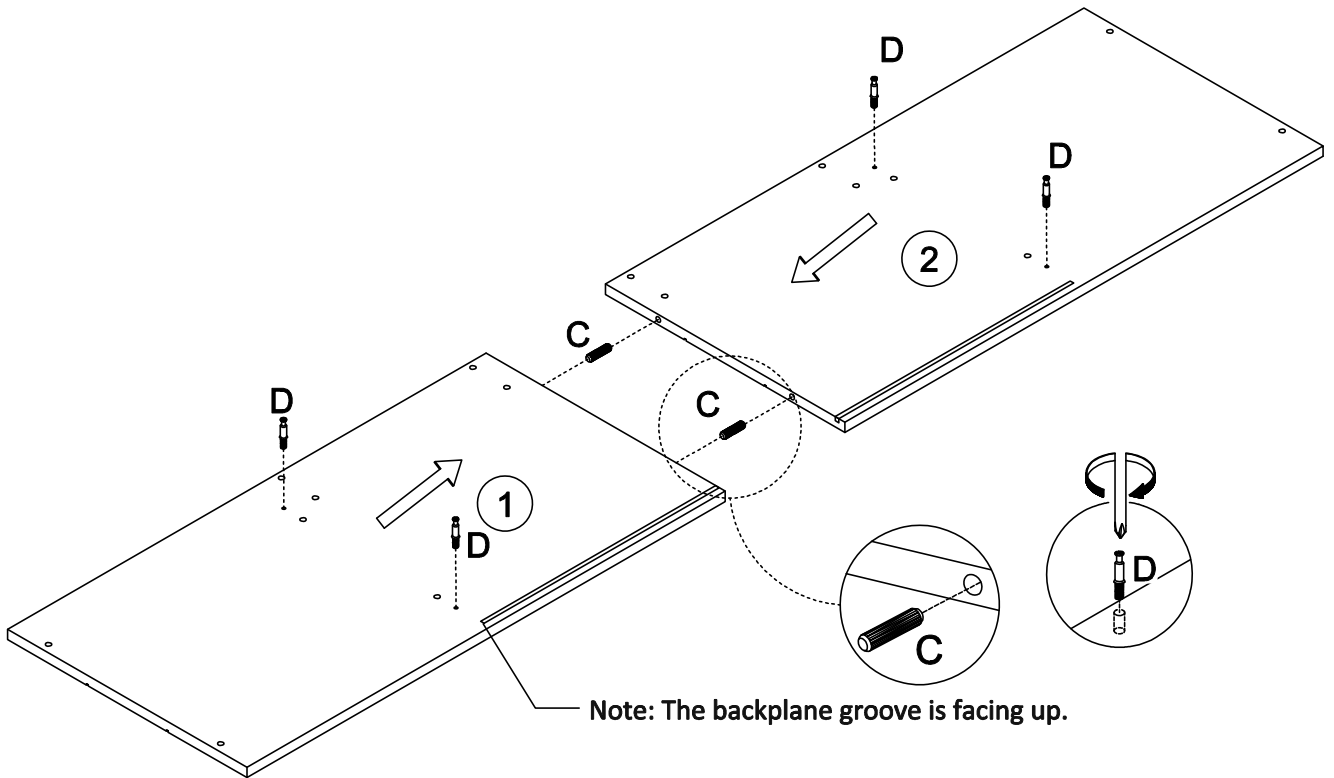
D x 4

Ø8x30mm



C x 2

Tighten the cam bolt (D) into the board, insert the wood dowels (C), then attach the boards (1) and (2).
Note: The backplane slot is facing up.



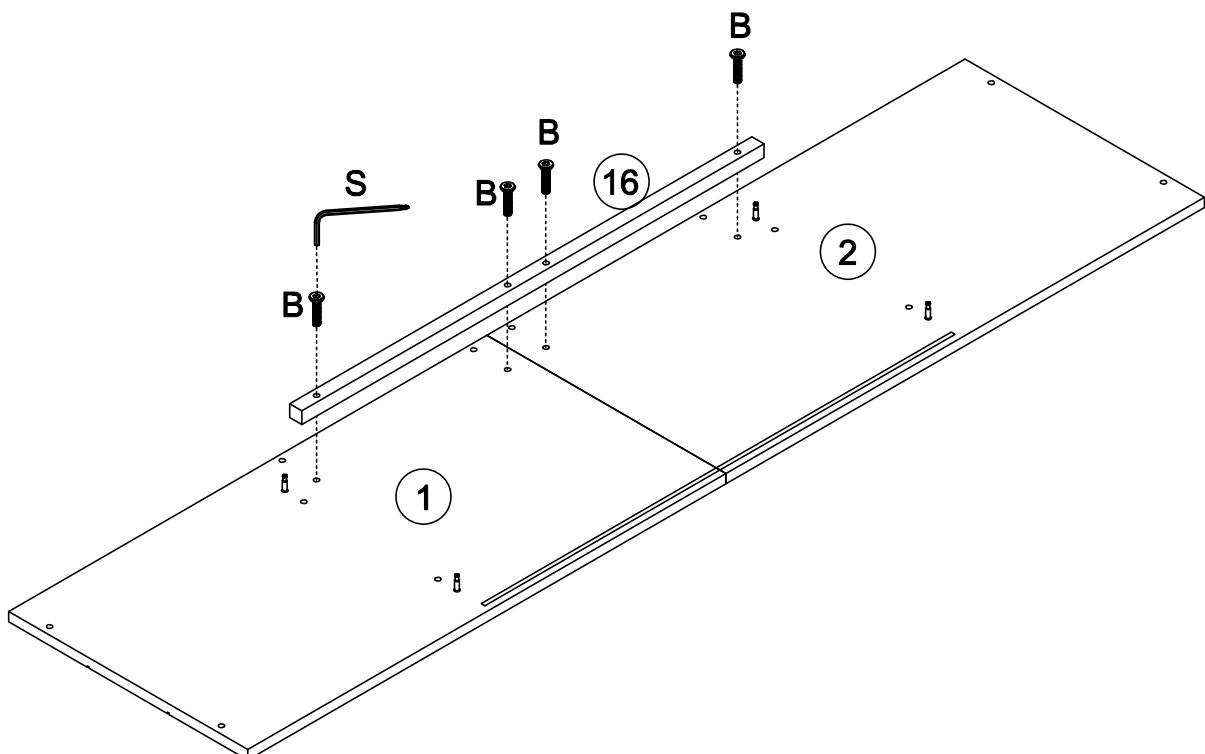
6

m6*30mm



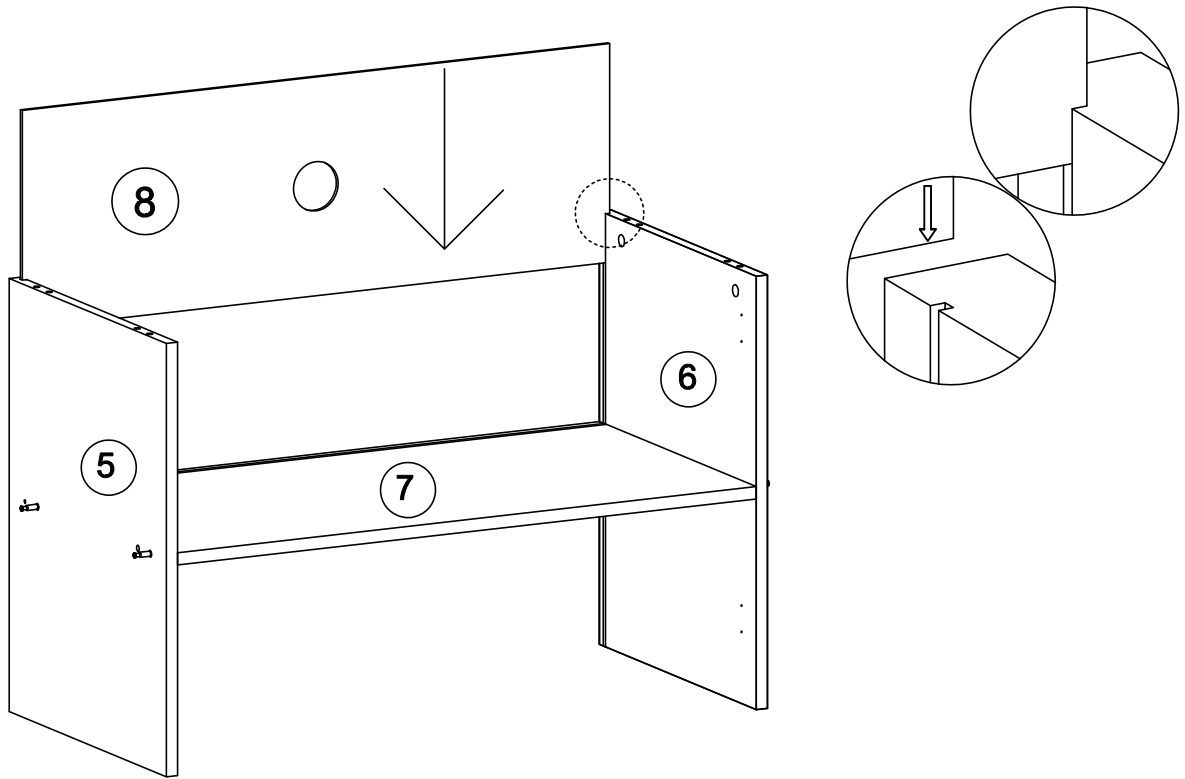
B x 4

Use wrench to fix the iron bar (16) on the boards with bolts (B).



7

Insert the board (8) into backplane groove as shown.



8

Ø15*12mm



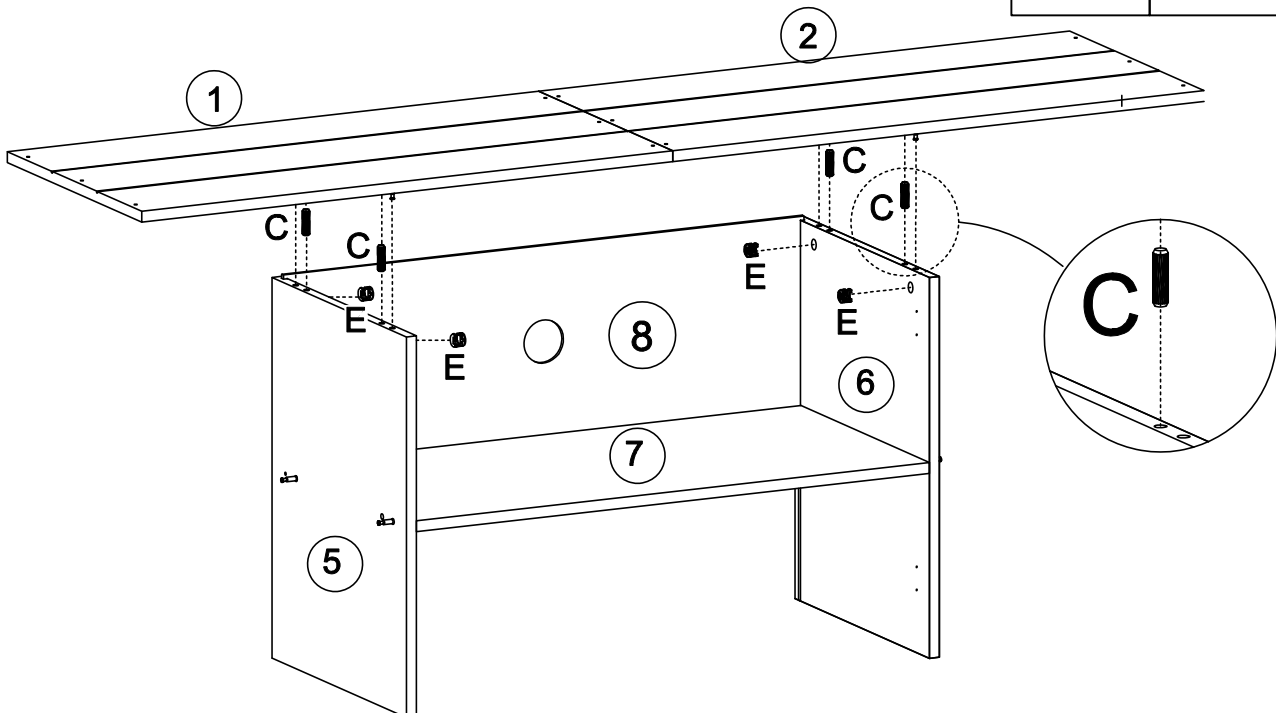
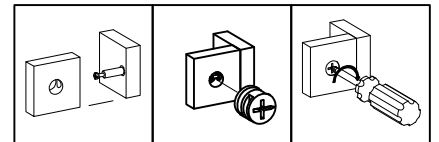
E x 4

Ø8x30mm



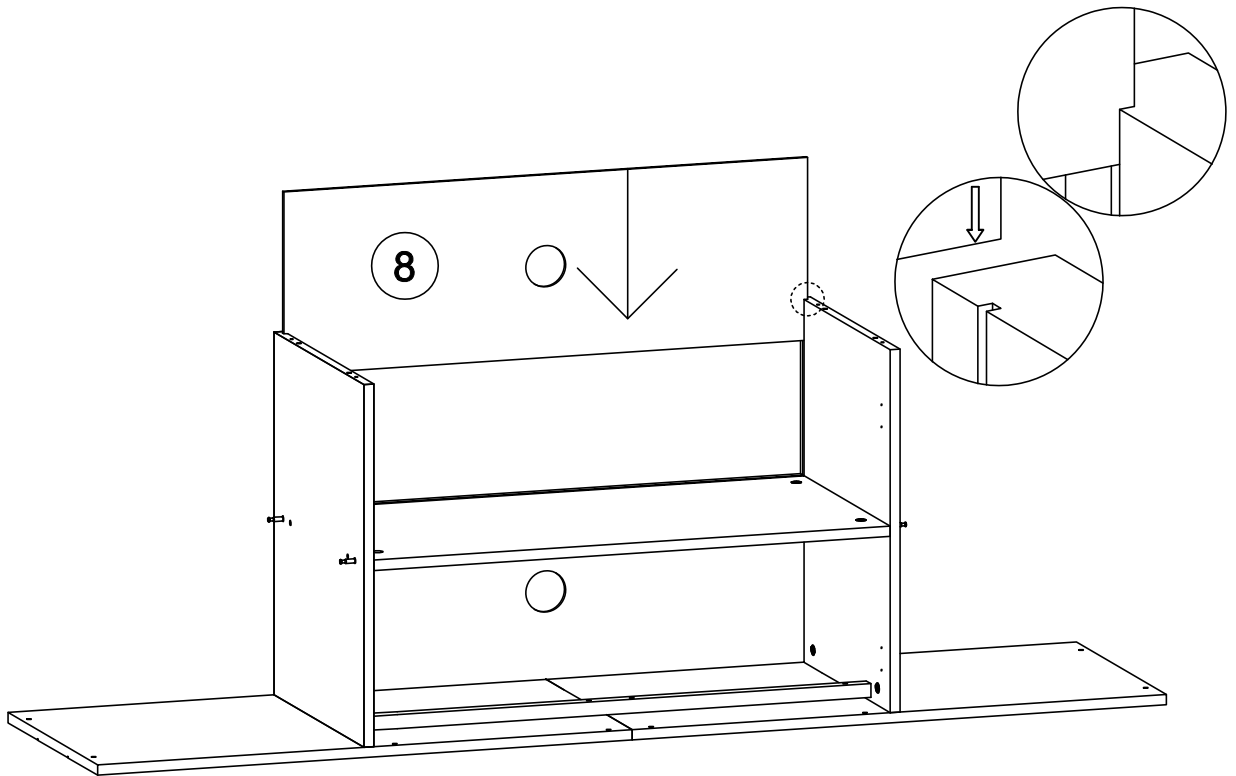
C x 4

Insert the wood dowels (C), then use screwdriver to fix the boards (1) and (2) with the cam locks (E).
Note: The (16) is facing down.






9

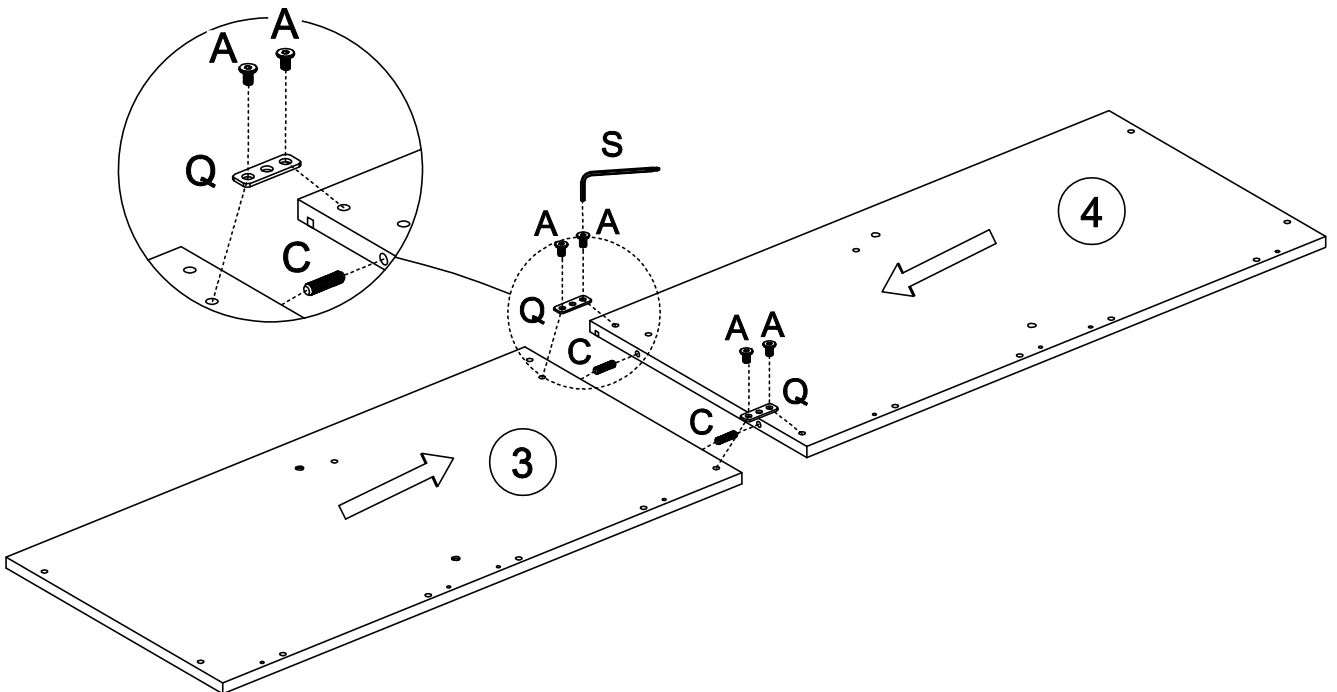
Insert the board (8) into backplane groove as shown.



10

<p>48*16*2.5mm</p>  <p>Q x 2</p>	<p>Ø8x30mm</p>  <p>C x 2</p>	<p>m6*12mm</p>  <p>A x 4</p>	
---	---	---	--

Insert the wood dowels (C) to connect the boards (3) and (4), then use the wrench to fix the plate (Q) with bolts (A).



PRODUCT ASSEMBLY

11

Ø6*48mm



O x 4

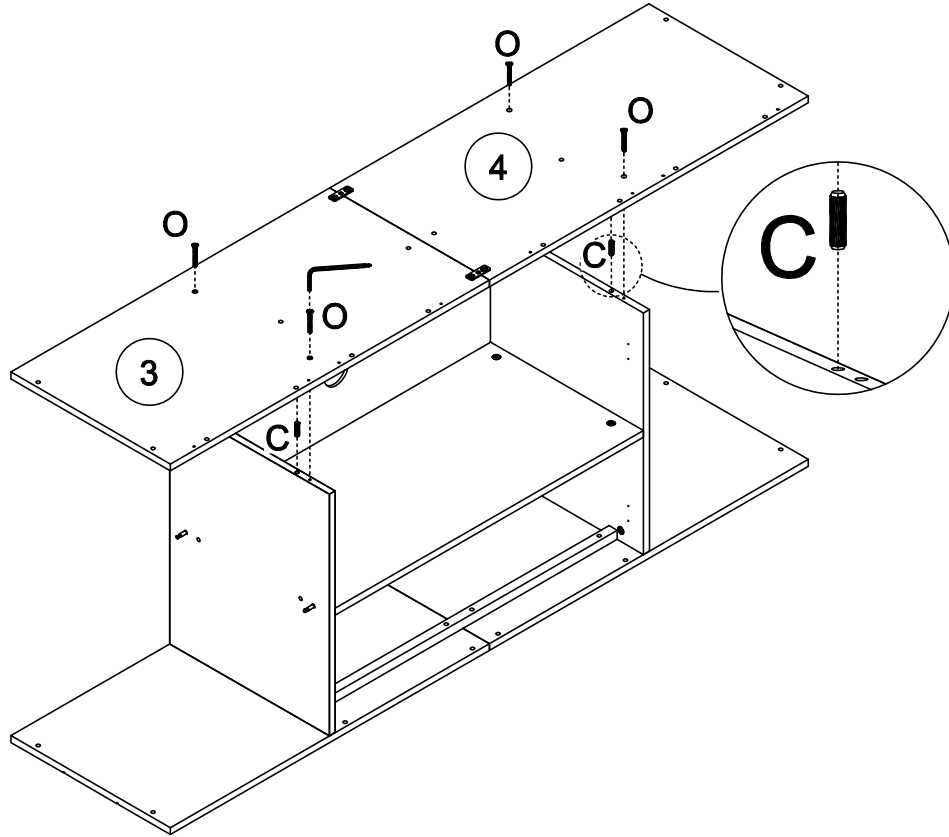
Ø8x30mm



C x 4

Insert the wood dowels (C), use the wrench to fix the boards (3) and (4) with bolts (O).

Note: Need two people to work together.



12

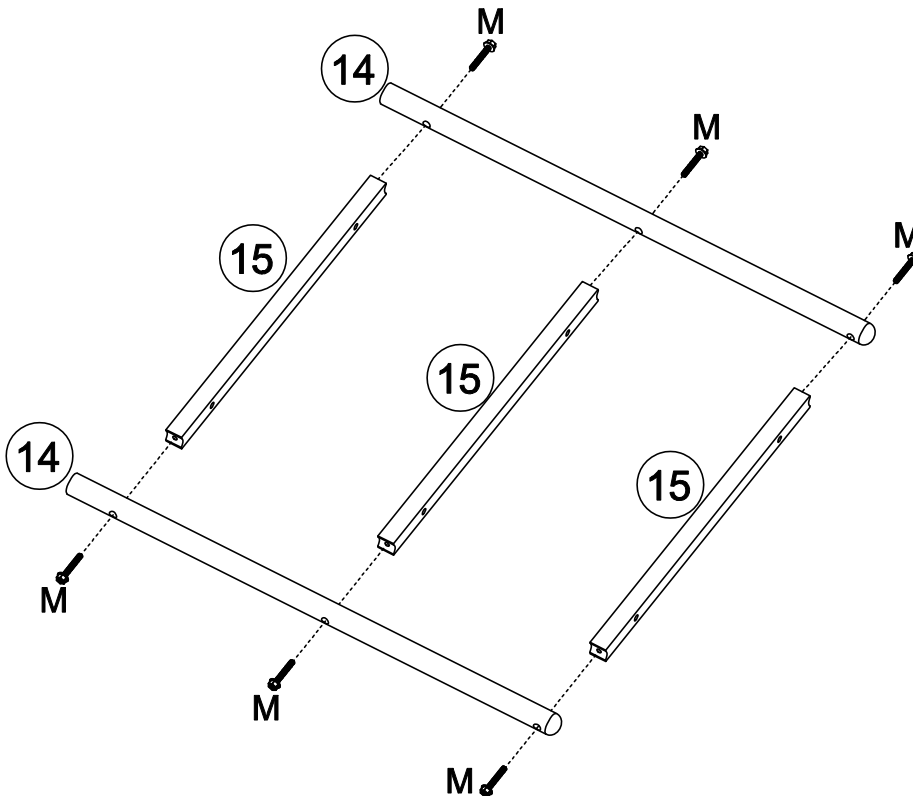
m6x35mm



M x 12

Use the wrench to connect the iron tubes (14) and (15) with bolts (M).

Note: The round heads of the iron tubes (14) should be on the same level.



X2

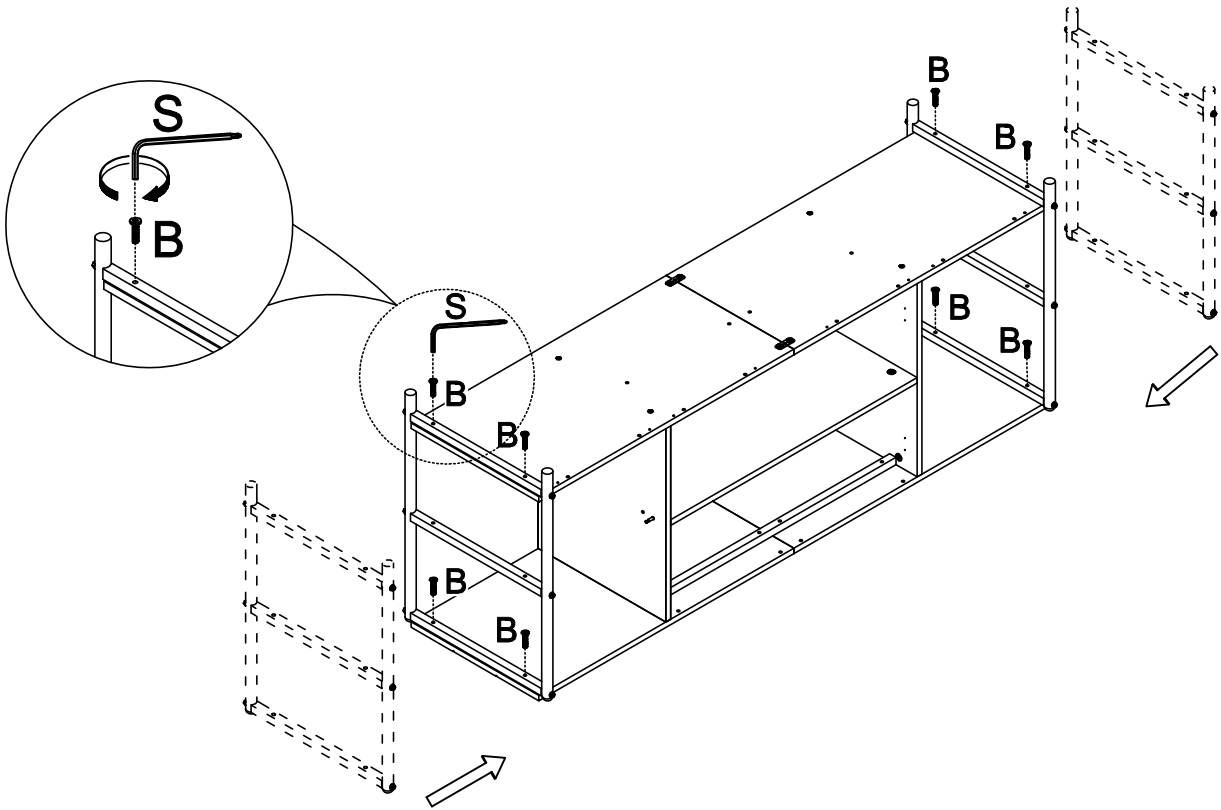
13

m6x30mm



B x 8

Use the wrench to fix iron frame on the boards with bolts (B).



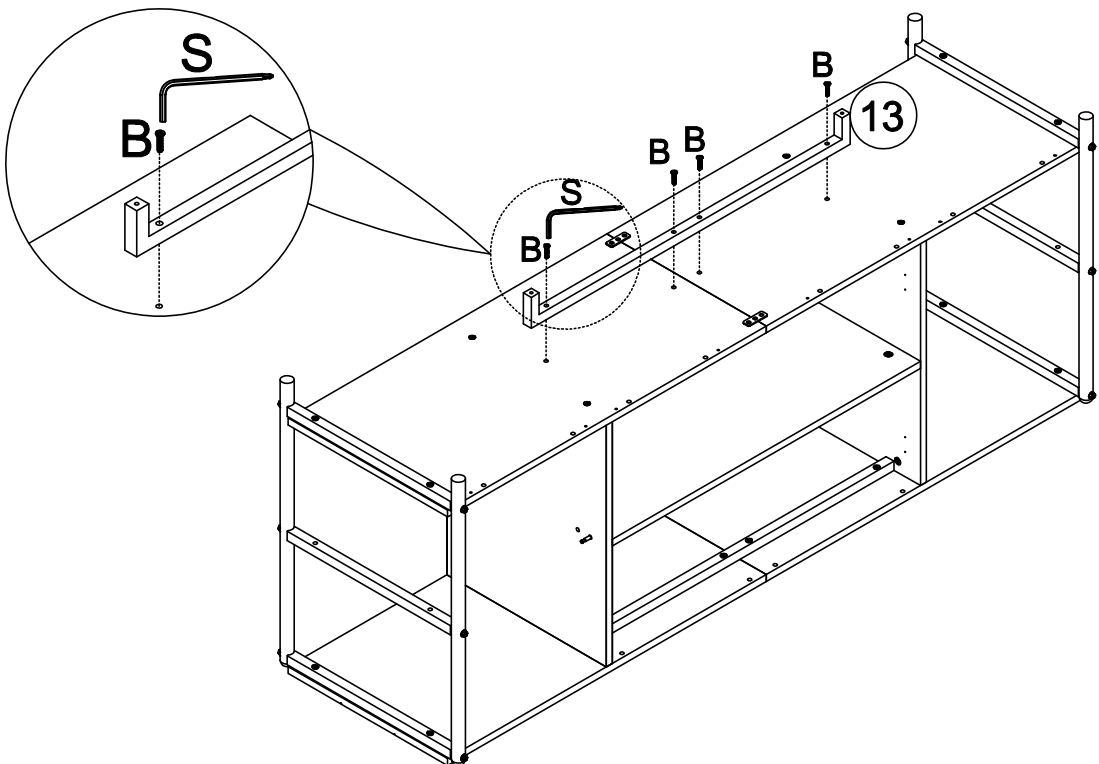
14

m6x30mm



B x 4

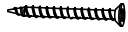
Use the wrench to fix iron tube (13) on the boards with bolts (B).



PRODUCT ASSEMBLY

15

Ø4*32mm



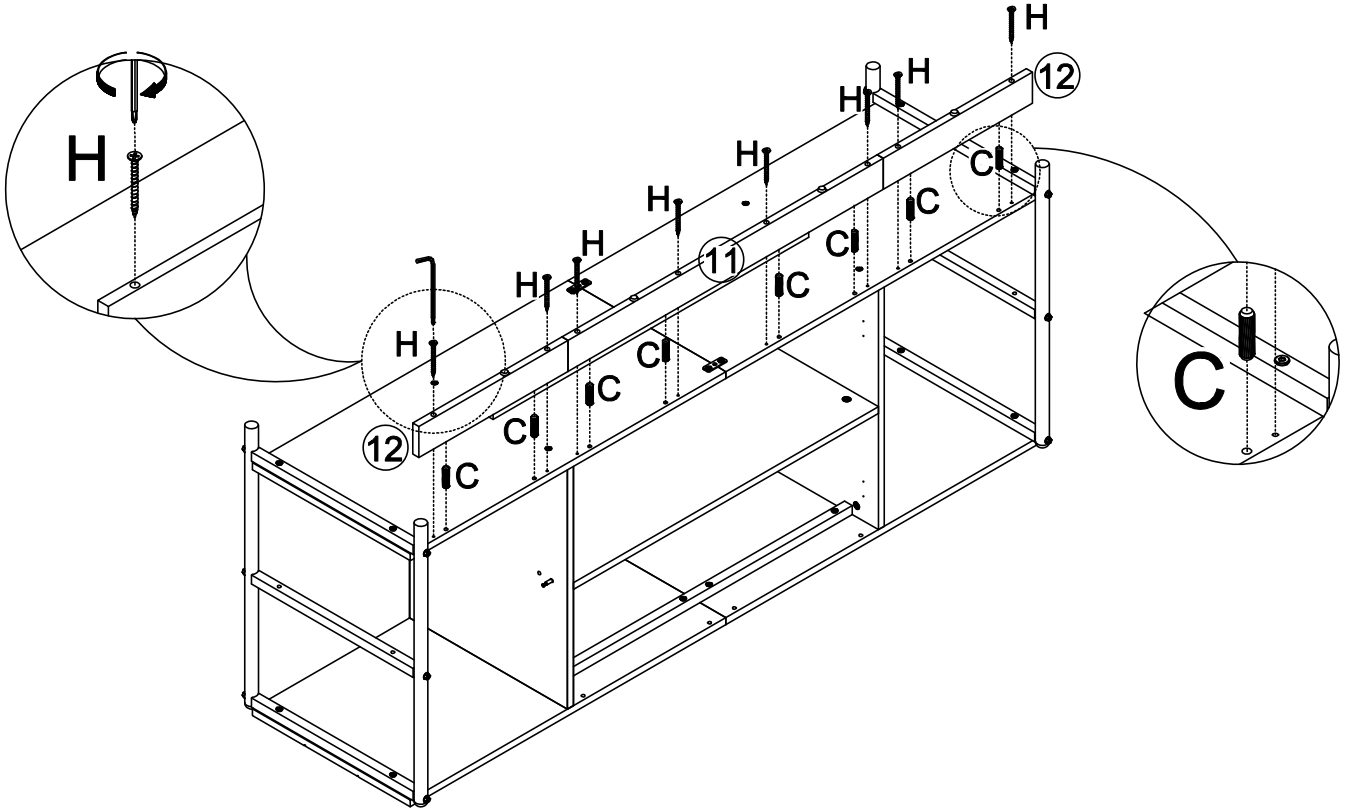
H x 8

Ø8x30mm



C x 8

Insert the wood dowels (C), use wrench to fix the boards (11) and (12) with screws (H).
Note: If the boards (12) cannot be placed horizontally, you need to adjust the position of side frames (15).



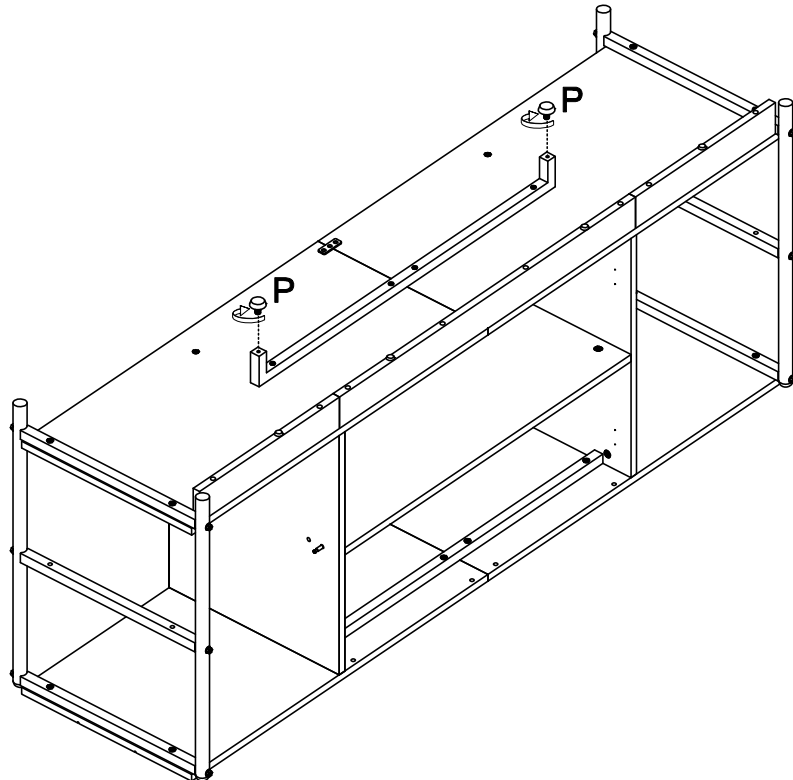
16

Ø19*6mm






P x 2

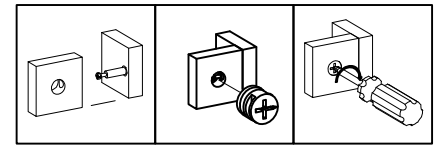
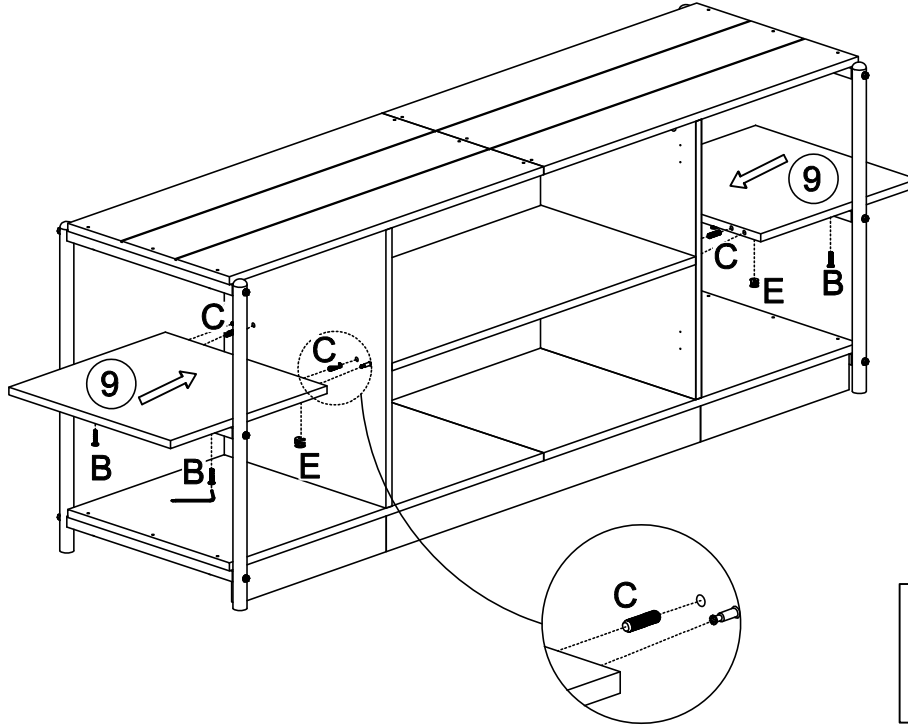
Tighten the floor leveler (P) on the iron tube.




PRODUCT ASSEMBLY

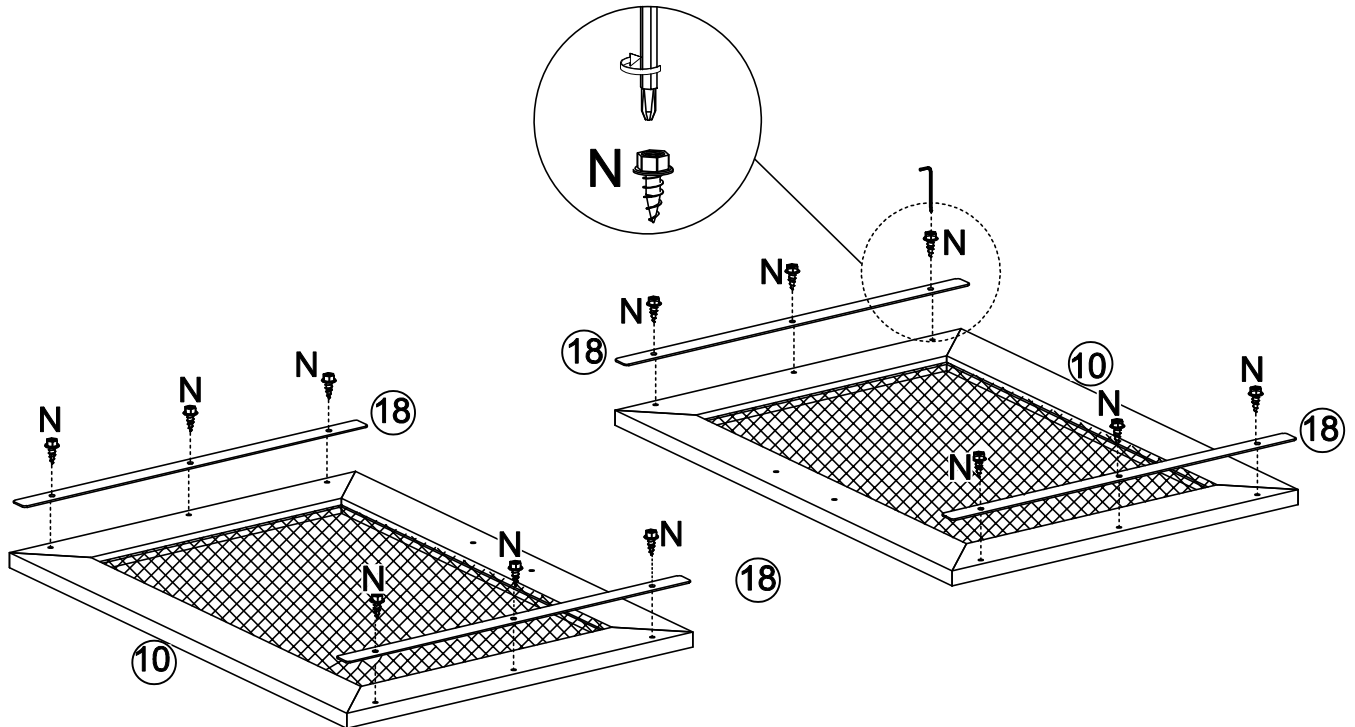
17

$\text{\O}15 \times 12 \text{mm}$  E x 4	$\text{\O}8 \times 30 \text{mm}$  C x 4	m6x30mm  B x 4	Insert the wood dowels (C), use wrench to fix boards (9) with the cam locks (E) and bolts (B).
---	--	---	--




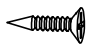


18

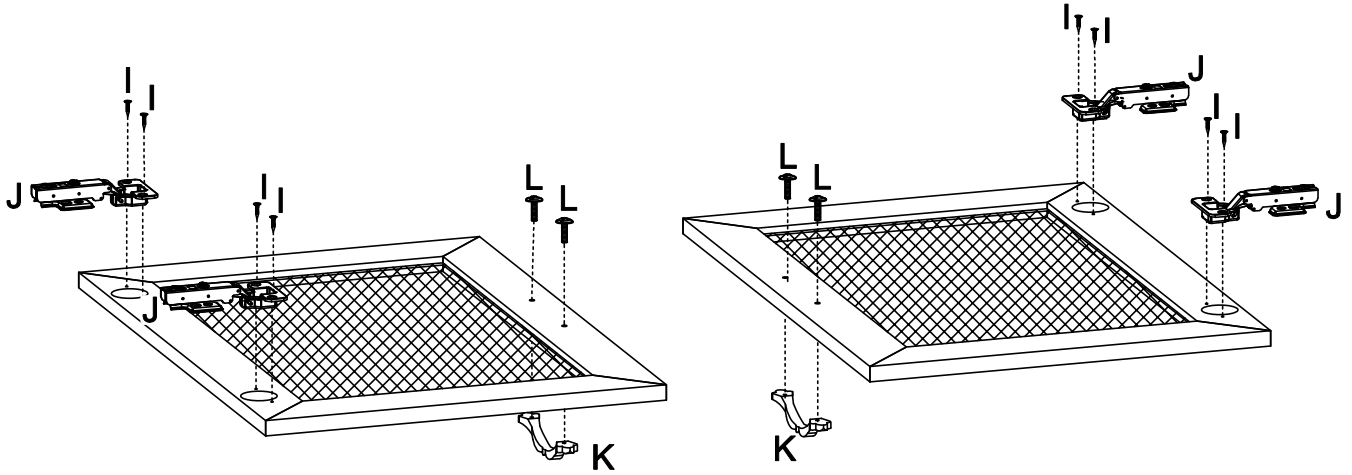
$\text{\O}6 \times 12 \text{mm}$  N x 12	Use the screwdriver to fix the iron bars (18) on top of boards (10) with screws (N).
---	--



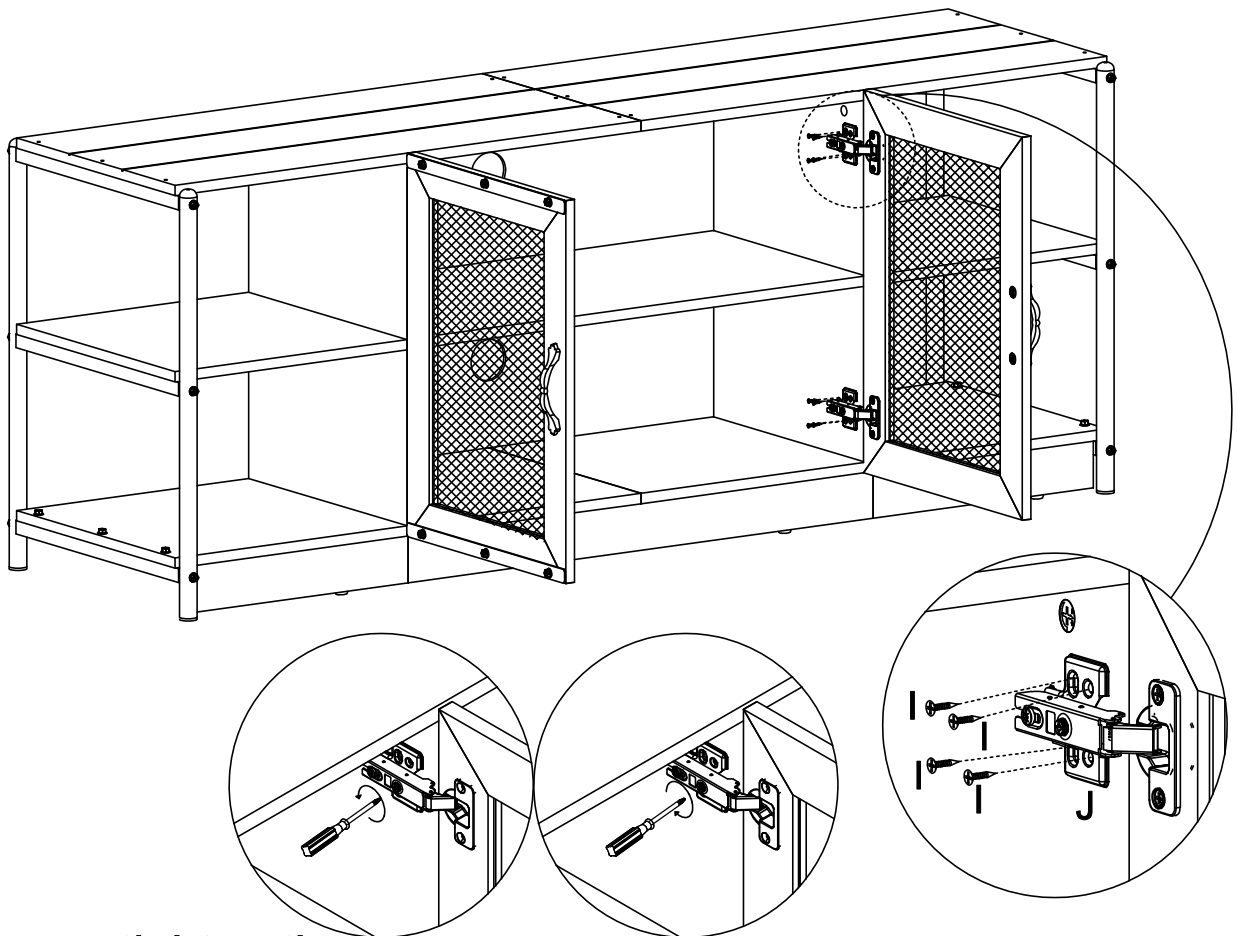
19

<p>m4*18mm</p>  <p>L x 4</p>	 <p>K x 2</p>	 <p>J x 4</p>	<p>Ø3.5*14mm</p>  <p>I x 24</p>	
---	--	--	--	--

Use the screwdriver to fix the hinges (J) on the boards (10) with screws (I), use wrench to fix the door handles (K) with bolts (L).



Use the screwdriver to fix the hinges (J) on the tv stand with screws (I).
 Note: Need two people to work together.



Loosen or tighten the screw indicated a little to adjust the gap between the door panels,

PRODUCT ASSEMBLY

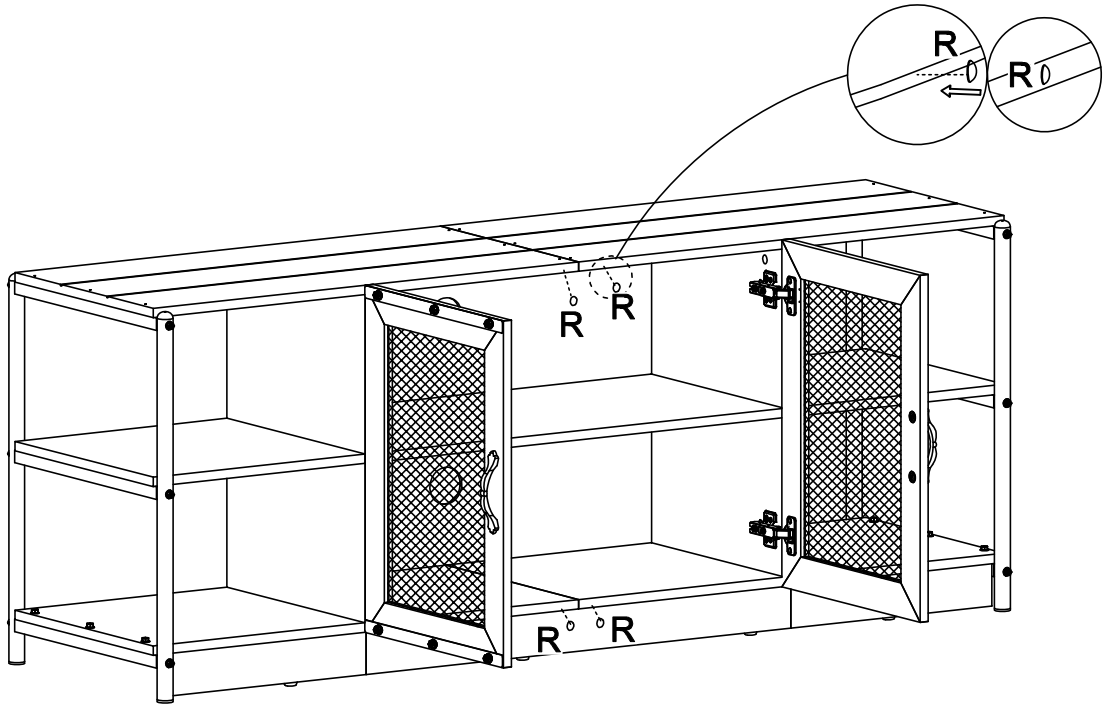
20

Ø10*2mm



R x 4

Attach the EVA pad (R) on the board.



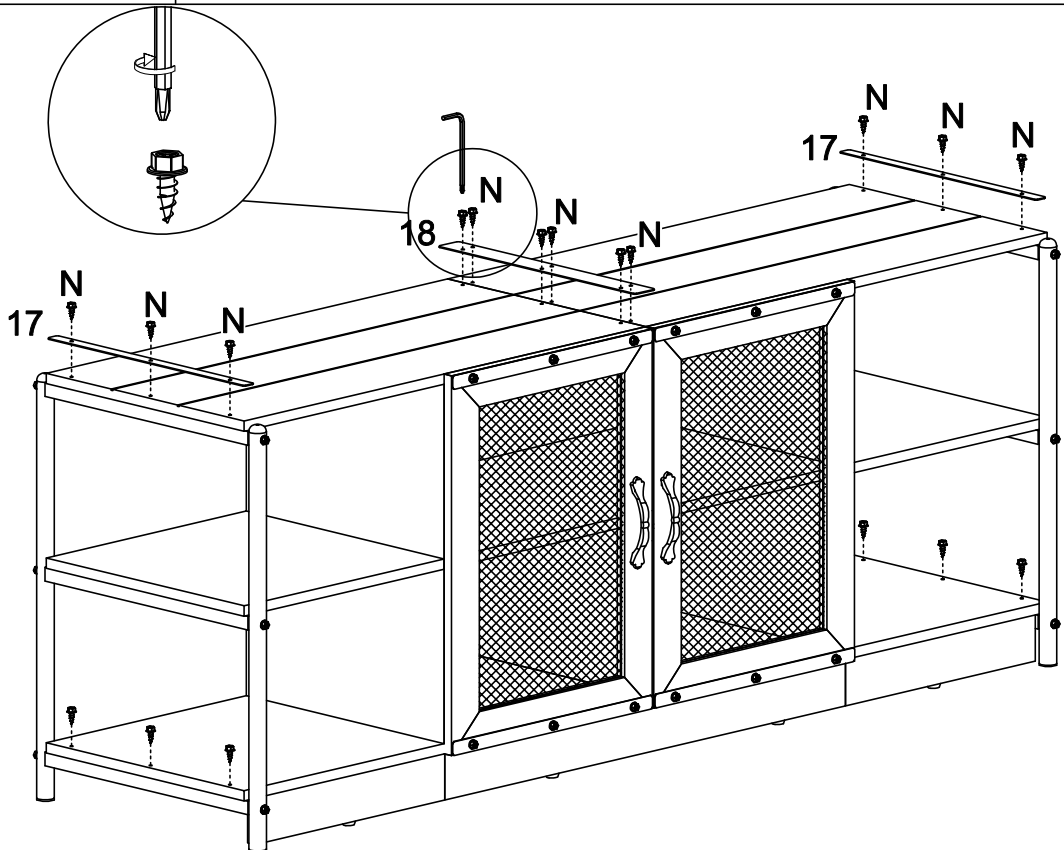
21

Ø6x12mm



A x 18

Use the screwdriver to fix the iron tablets (17) and (18) with screws (N).



PRODUCT ASSEMBLY

22

15*15*10mm



F x 8

Ø3*18mm



G x 8

Use the screwdriver to fix the back panel buckles (F) with screws (G).

