



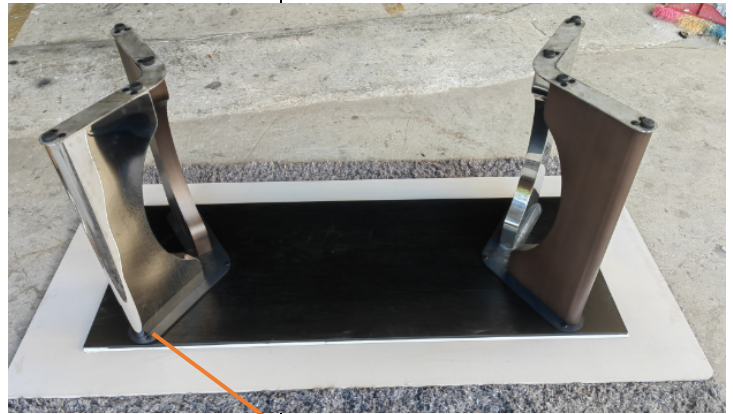


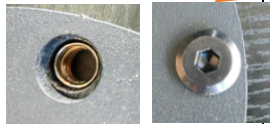
# Installation

Hardware List		Hardware List	
 Table top	1	 Table leg	1
 8x16mm screw	6	 Hexagonal screw tap	1

1



8x16mm screw



Place the desktop flat on the ground, align the table base with the hole on the desktop, tighten with 8\*16 screws, and the installation is complete. Note: Handle with care when moving to avoid scratches and bumps.

