

# INSTALLATION INSTRUCTIONS

## ONE PIECE TOILET



To ensure this product is installed properly, please read these instructions carefully before you begin.  
(Certain installations may require professional help.) Also be sure your installation conforms to local codes.

**CAUTION: HANDLE WITH CARE. FRAGILE VITREOUS CHINAWARE WITH SHARP EDGES IF BROKEN.**

NOTE: Pictures may not exactly define contour of toilet and components.

### RECOMMENDED TOOLS AND MATERIALS

Putty knife	Flathead Screwdriver	Adjustable Wrench	Sealant	Tape Measure
Hacksaw	Flexible Supply Hose	Water Supply Kit	Carpenters Level	

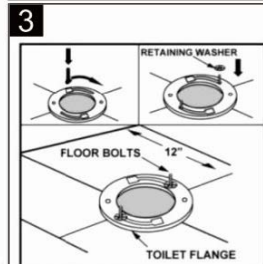
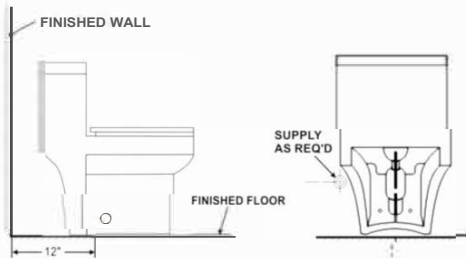
### 1 REMOVE OLD TOILET

- Turn off water supply valve and flush to empty the tank. Dry the remaining water from tank and bowl with a towel or sponge.
- Disconnect and remove old water supply line. Note: If replacing valve, first shut off main water supply!
- Remove old mounting hardware, remove toilet and plug floor flange to block sewer gases from escaping.
- Remove closet bolts from flange and clean away old wax, putty, etc.

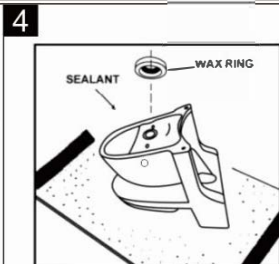
NOTE: MOUNTING SURFACE MUST BE CLEANED AND LEVELED BEFORE NEW TOILET IS INSTALLED.

### 2 ROUGHING-IN DIMENSIONS:

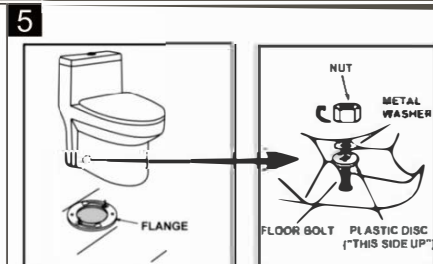
NOTE: Distance from wall to closet flange centerline must be as listed on chart:



**INSTALL CLOSET BOLTS**  
Insert floor bolts into flange channel with bolt head down (use plastic retaining washers to hold the bolts in full-length. Floor bolts should be parallel to wall and 6" (152mm) apart.

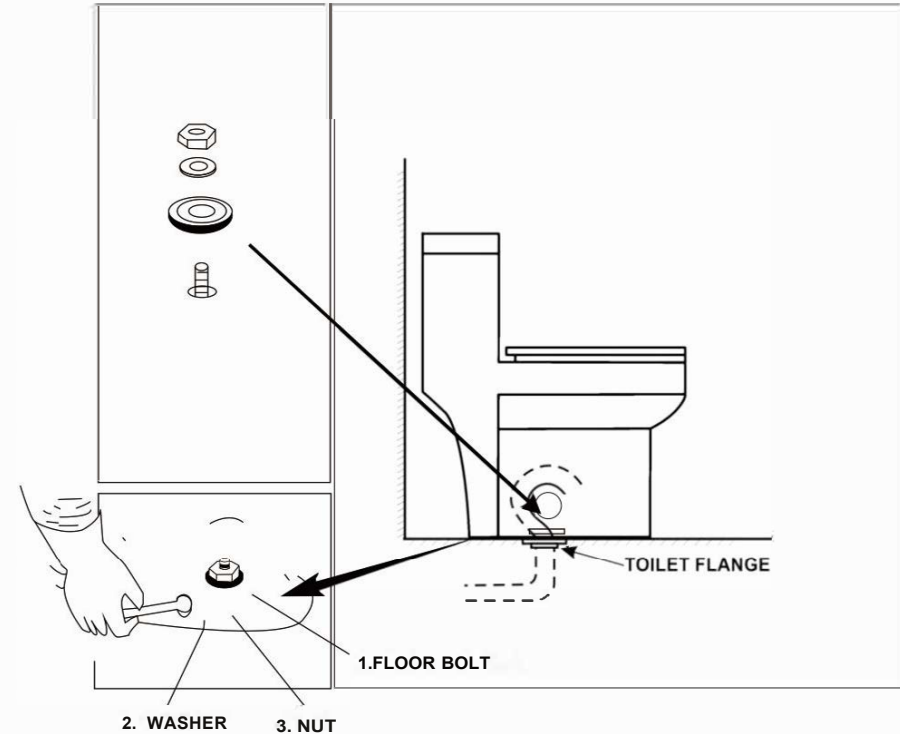


**INSTALL WAX RING**  
Turn toilet bowl down onto a towel or cushioned surface. Place the wax ring around the draining outlet of the bowl and press firmly. Apply a thin bead of sealant around toilet base.



**POSE THE TOILET BOWL ON FLANGE**  
a. Unplug floor waste opening, gently place the bowl in position with the floor bolts protruding up through the hole in the base.  
b. Press down with slight twisting motion on the top center of bowl to compress the wax ring creating a waterproof seal.  
c. Place plastic disc, metal washers and nuts on floor bolts.

### 6 INSTALL TOILET



- Cut off excess length of floor bolts using a hacksaw to fit bolt caps (leave no more than 1/4" length above nuts.) Alternately tighten nuts until toilet bowl is firmly seated on floor.

**DO NOT OVERTIGHTEN NUTS TO PREVENT FINISH CRACKS OR CHIPS.**

- Pour water into the bowl to prevent the escape of sewer gases.
- Place caps over floor bolts and press down for secure fit.
- Smooth off the sealant around base. Remove excess sealant.

SAVE FOR FUTURE USE