

# Wall Light Installation Guide

## Important Notes:

1. Electrical Specifications: Operating Voltage 100-120V | AC | Frequency: 60Hz | Maximum Bulb Wattage: 45W.

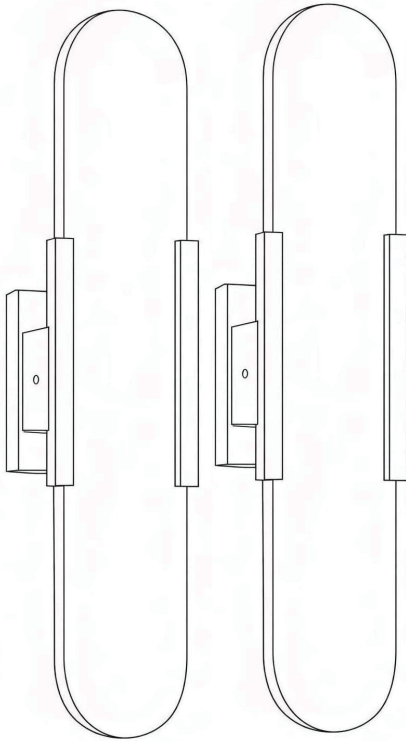
2. Installation Environment & Handling: Always wear protective gloves during installation to prevent scratches or permanent fingerprints on the fixture surface.

3. Wiring: This fixture does not require polarity distinction (hot/neutral) for the main leads.

4. Professional Installation Required: Installation must be performed by a qualified electrician to ensure safety and compliance with local codes.

5. Cleaning: After installing the wall lamp, if there is any dirt or stain on the natural marble or bracket, you can clean it with a towel.

6. Safety & Maintenance: Always turn off the power at the circuit breaker before installing, cleaning, or replacing the bulb.



## Package Contents:

Natural Alabaster ×2

Metal Bracket ×2

Glass Bulb shade ×4

Hardware Kit (Screw Pack) ×2

Gloves ×2 Pair

Instruction Guide ×1

G9 Light Bulb ×4

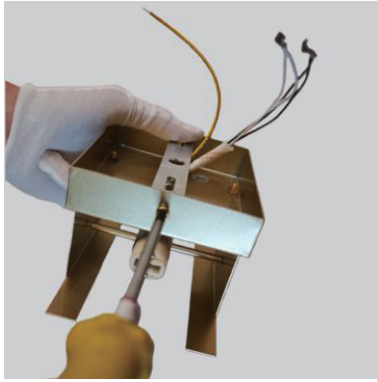
If you have any installation or product usage questions, please contact us. Our customer service team will be happy to assist you.

**Please refer to the next page for installation steps:**

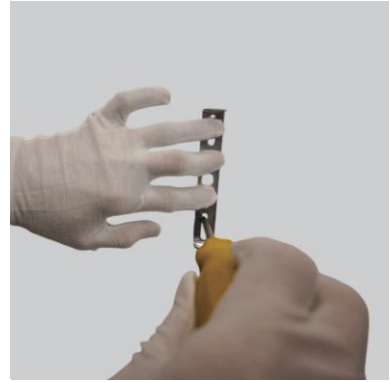
1. Turn OFF the breaker. Verify power is off with a voltage tester.



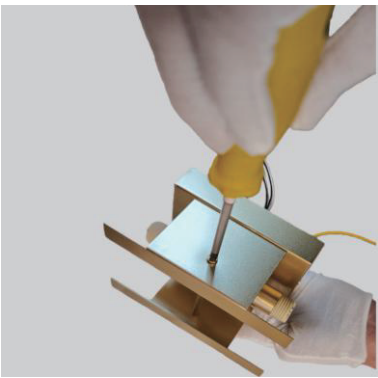
2. Remove the long bracket using a screwdriver



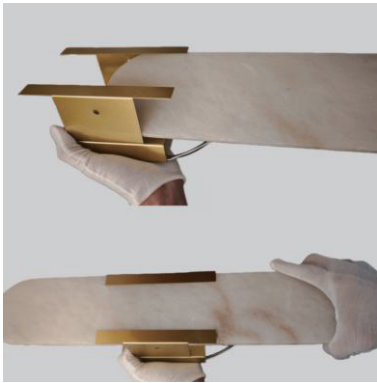
3. Drill holes in the wall and install the bracket with screws (make sure to insert the plastic anchors into the holes).



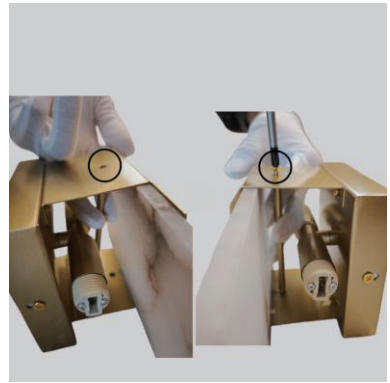
4. Use a screwdriver to loosen the screws and remove the metal bar.



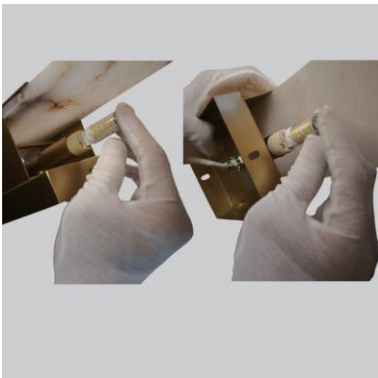
5. Tilt the marble and insert it into the bracket slot. Once in place, lay it flat and align it with the center of the bracket (the marble has no specific front or back).



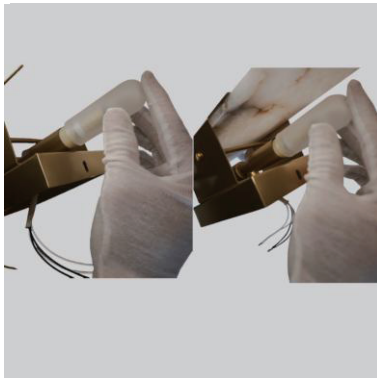
6. Use a screwdriver to tighten the screws on both sides of the metal bar (don't overtighten).



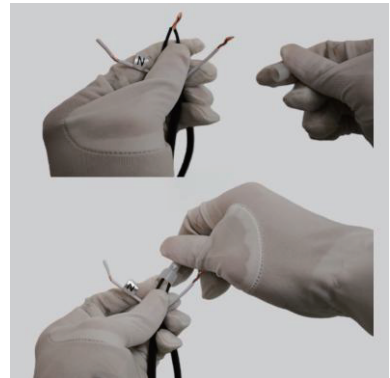
7. Insert two G9 light bulbs into the sockets.



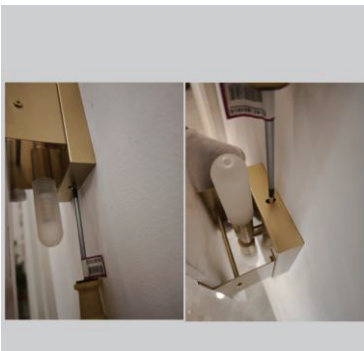
8. Screw the glass shades clockwise onto the light fixture.



9. Connect Black to Black (L/Hot), White to White (N/Neutral), Yellow/Green to Ground (G). Tighten wire nuts.



10. Use a screwdriver to tighten the screws on both the top and bottom sides of the bracket.



11. Turn on the breaker and test the light. Installation is complete.

