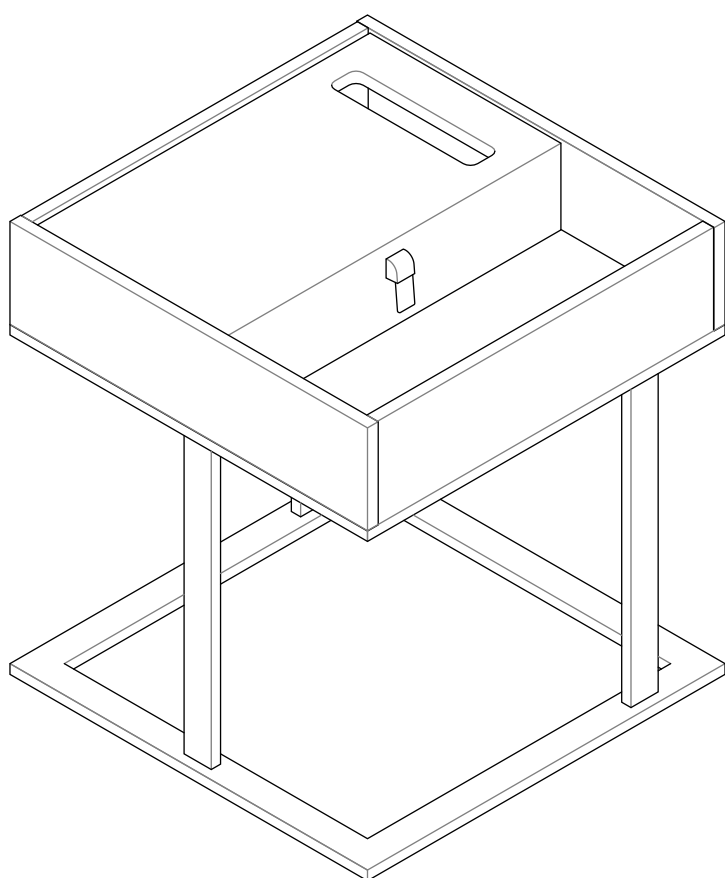
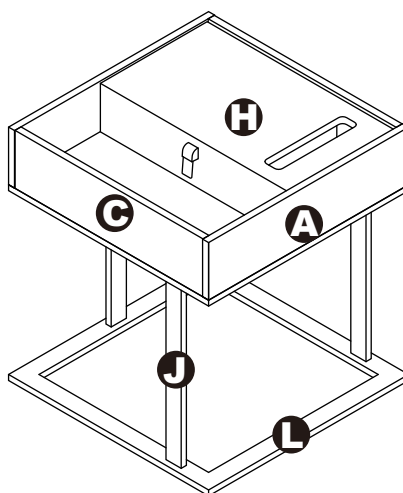


ASSEMBLY INSTRUCTIONS



SIDE TABLE

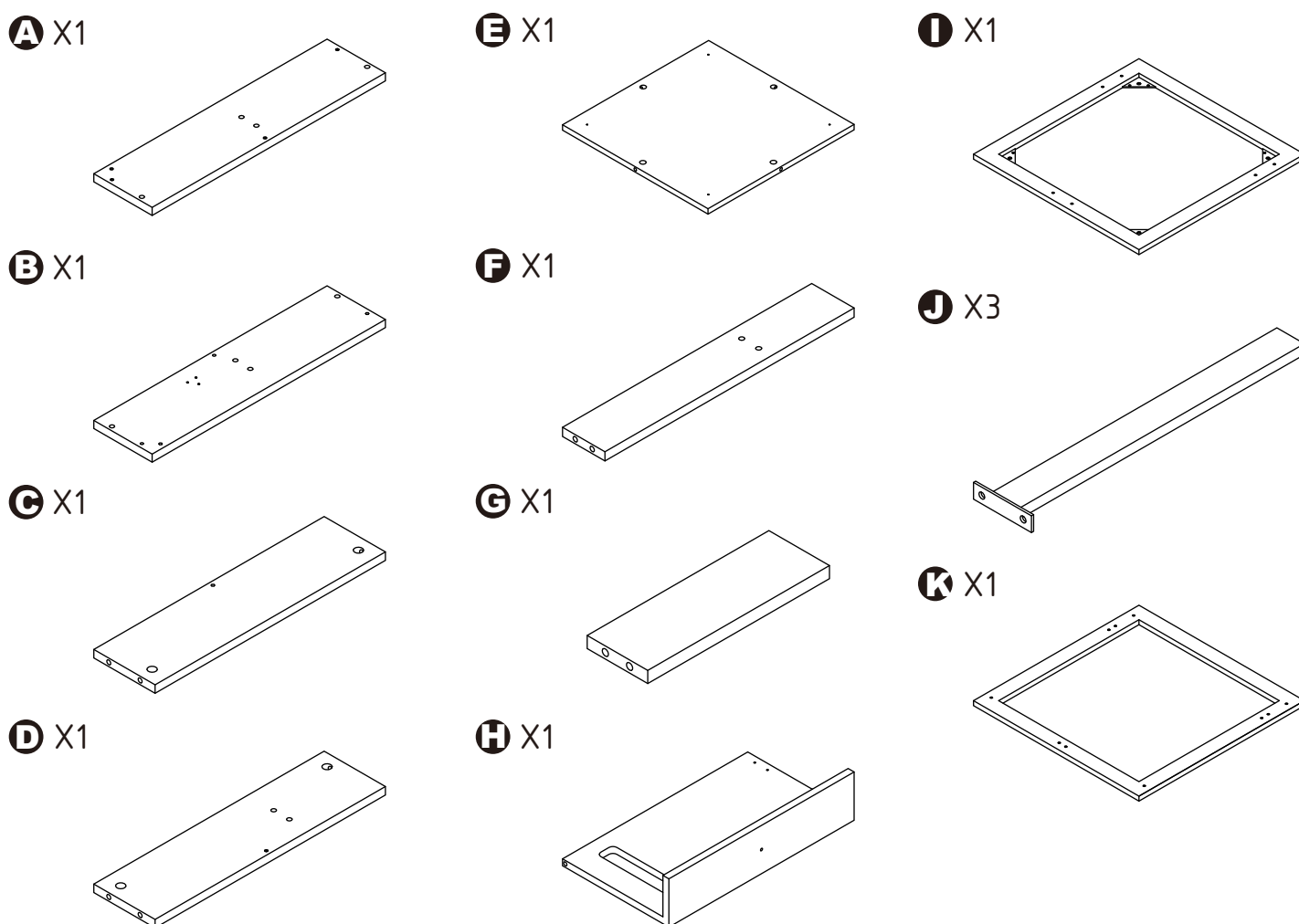
SIDE TABLE



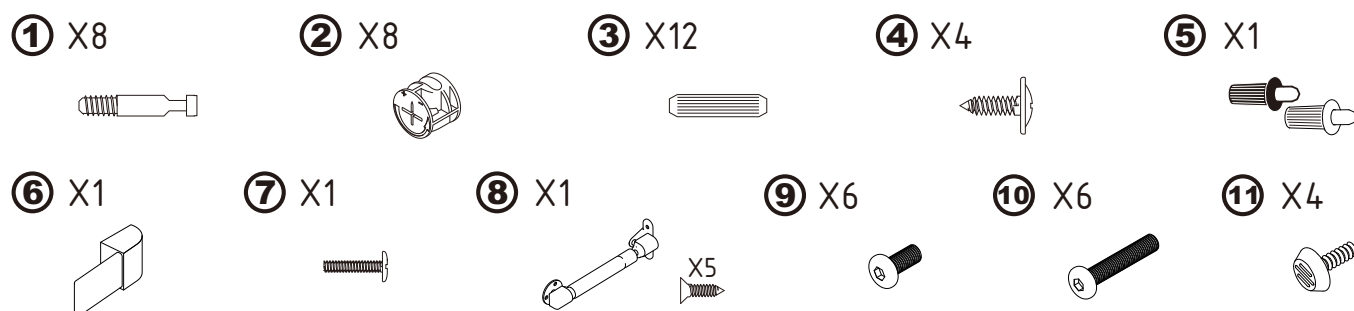
DIMENSIONS

Width - 19.69"
Depth - 19.69"
Height - 21.59"

PARTS LIST

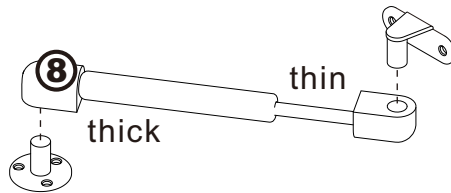


HARDWARE LIST

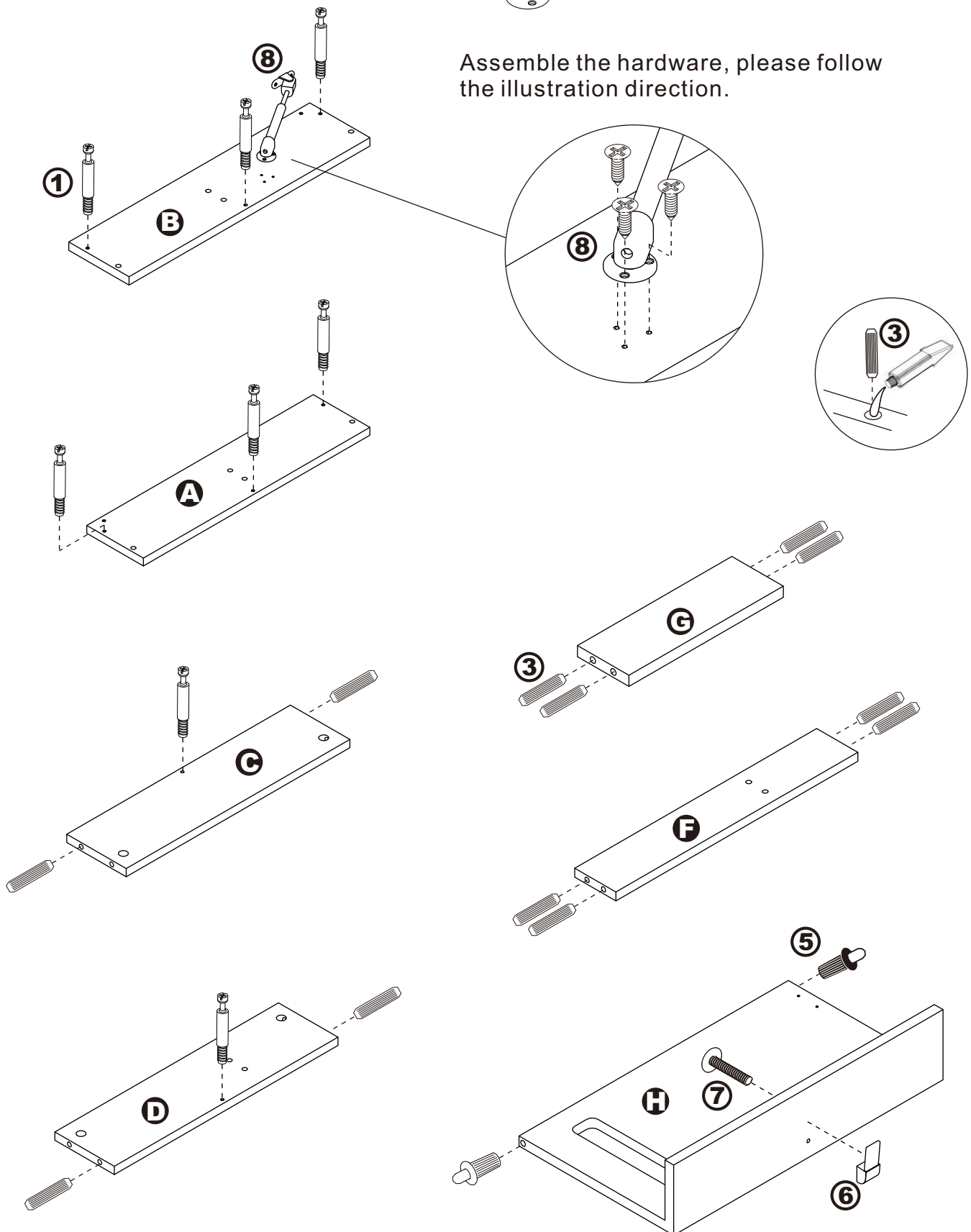


ASSEMBLY INSTRUCTIONS

Step 1.

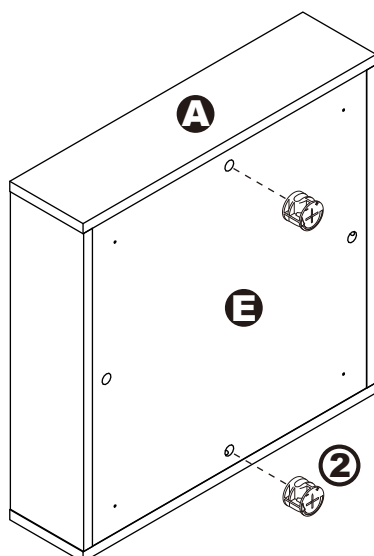
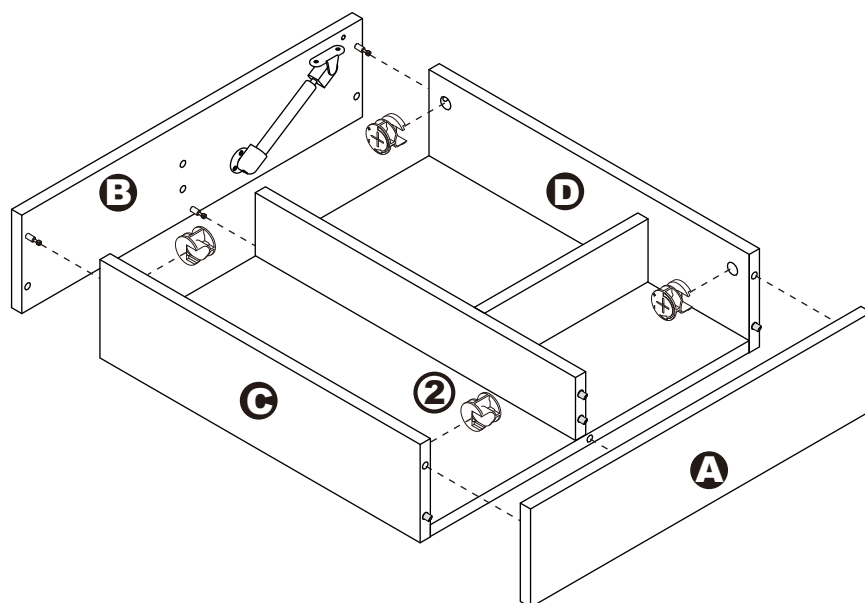
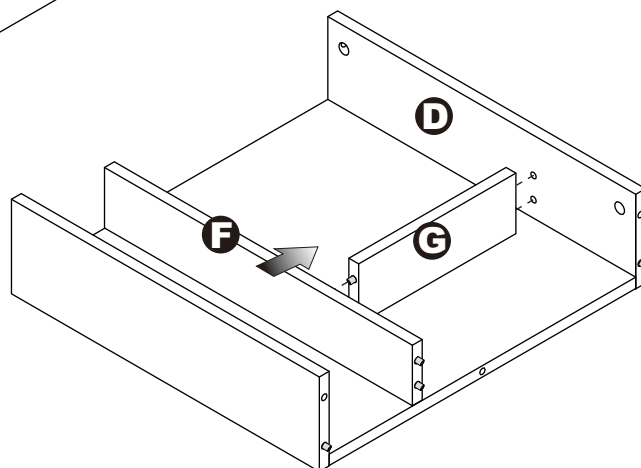
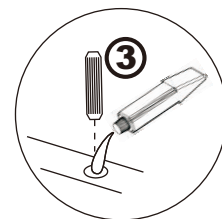
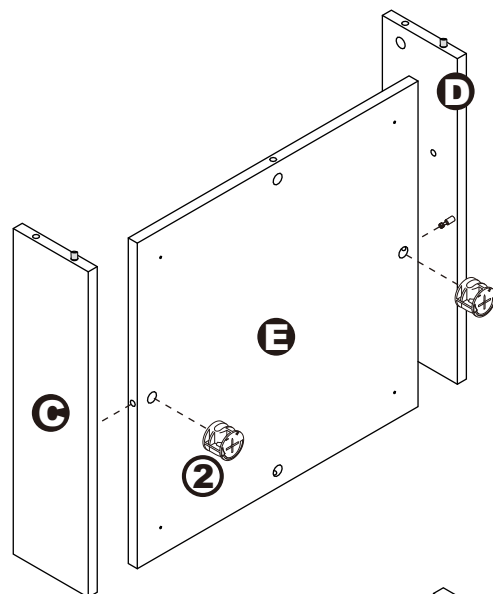
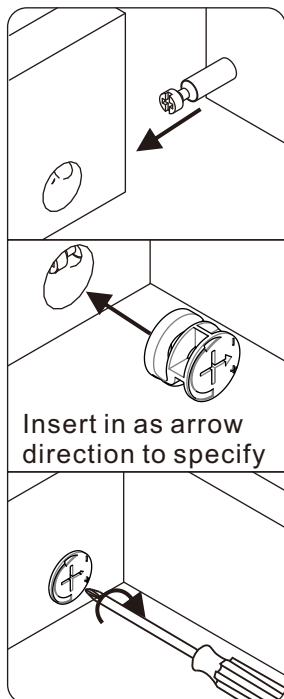


Assemble the hardware, please follow the illustration direction.



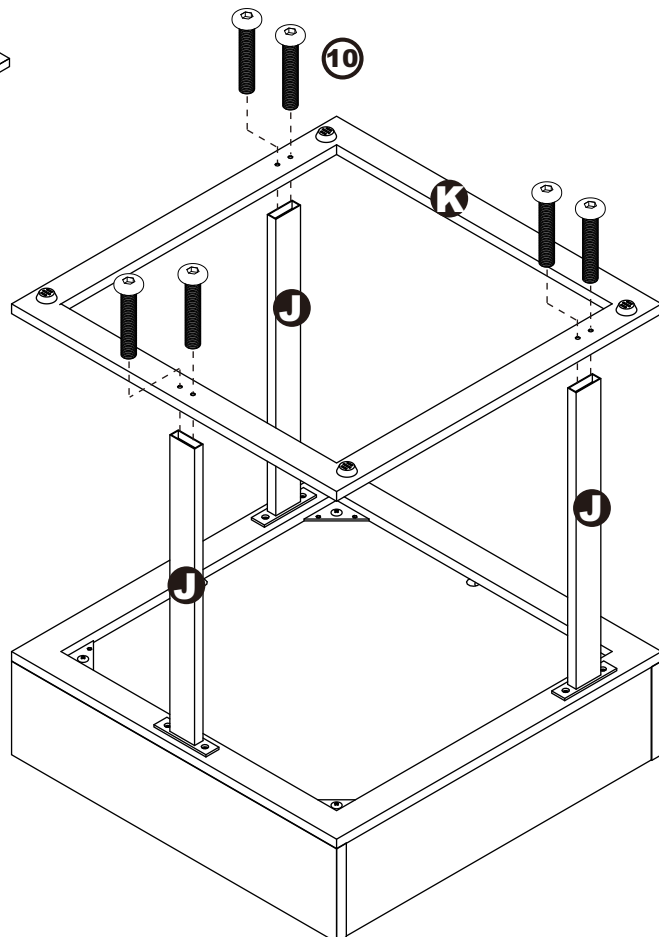
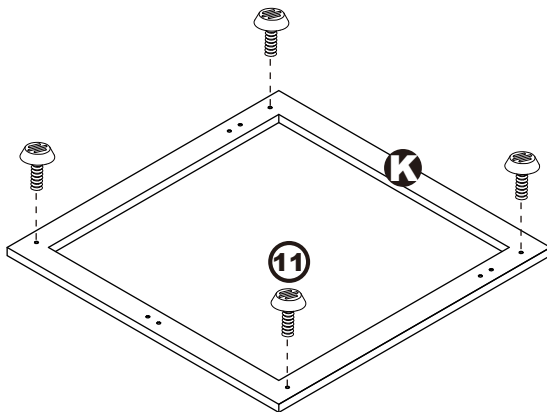
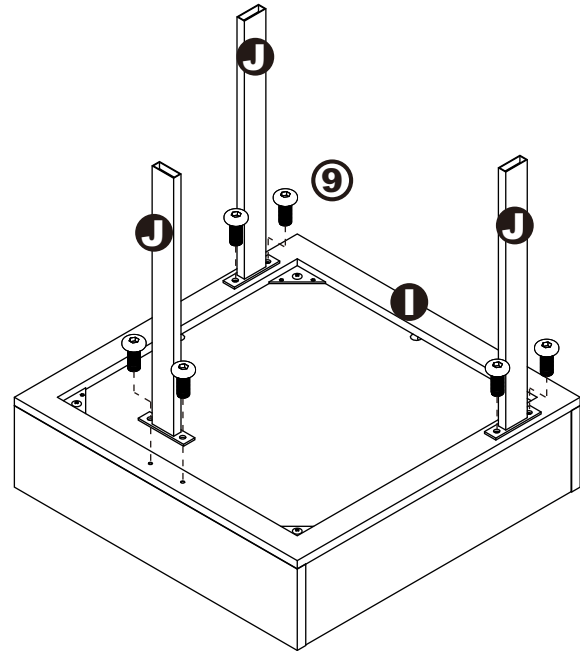
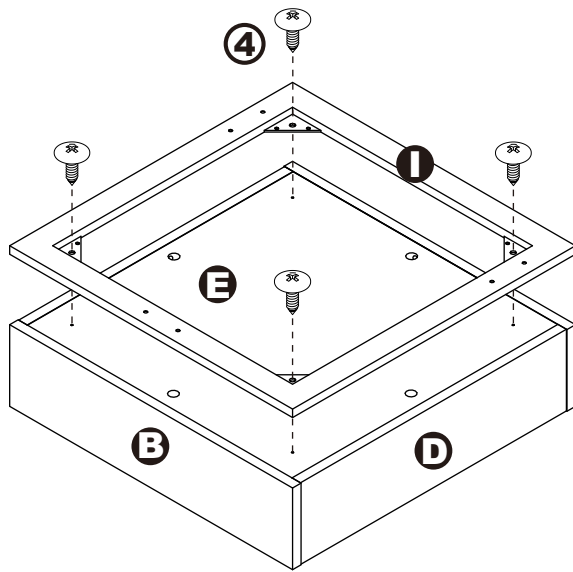
ASSEMBLY INSTRUCTIONS

Step 2.



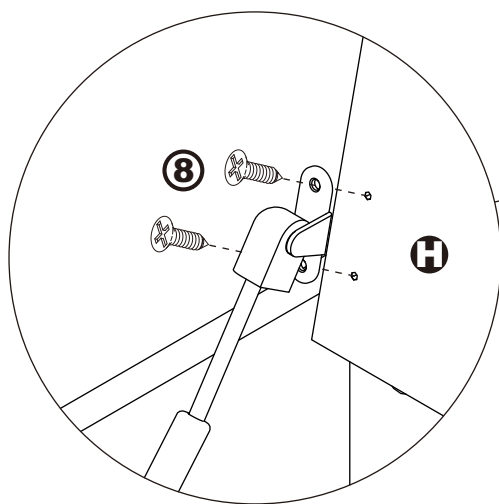
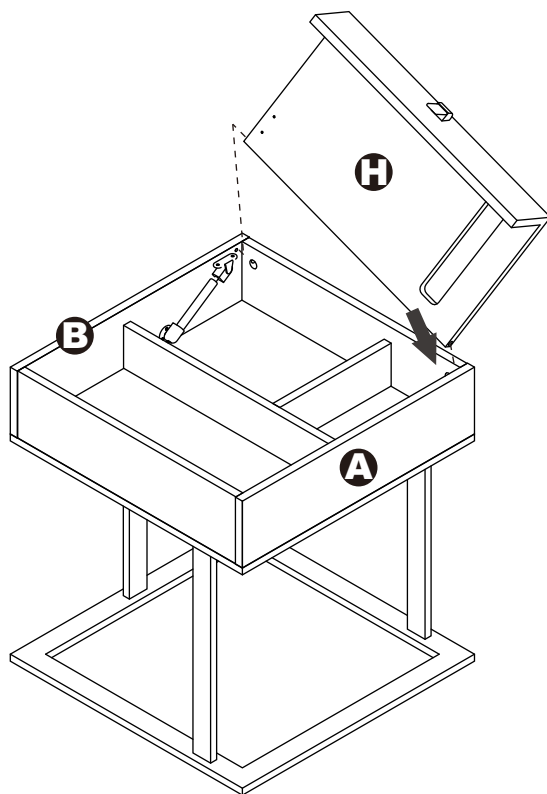
ASSEMBLY INSTRUCTIONS

Step 3.

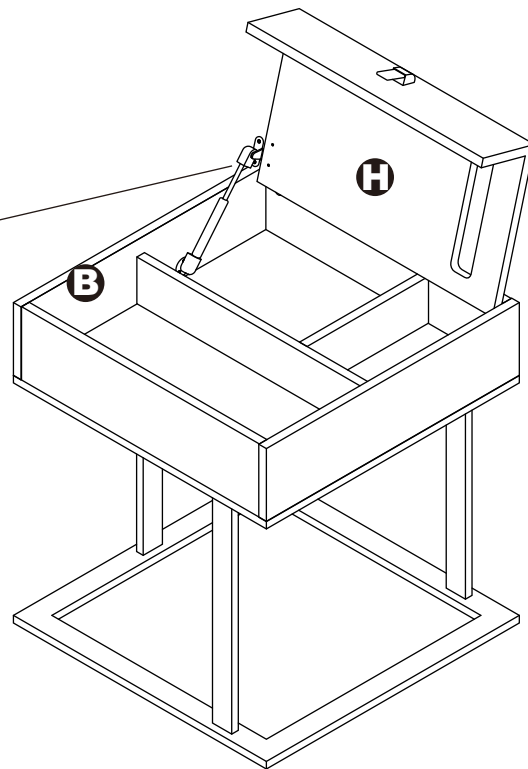


ASSEMBLY INSTRUCTIONS

Step 4.



The function of this hinge is mainly to prevent fall bakward instead of seft closing.



ASSEMBLY IS COMPLETED

Make sure the product is rested on a flat surface and does not feel loose or wobbly. If it does, double check that the bolts/screws are secured and properly tightened.