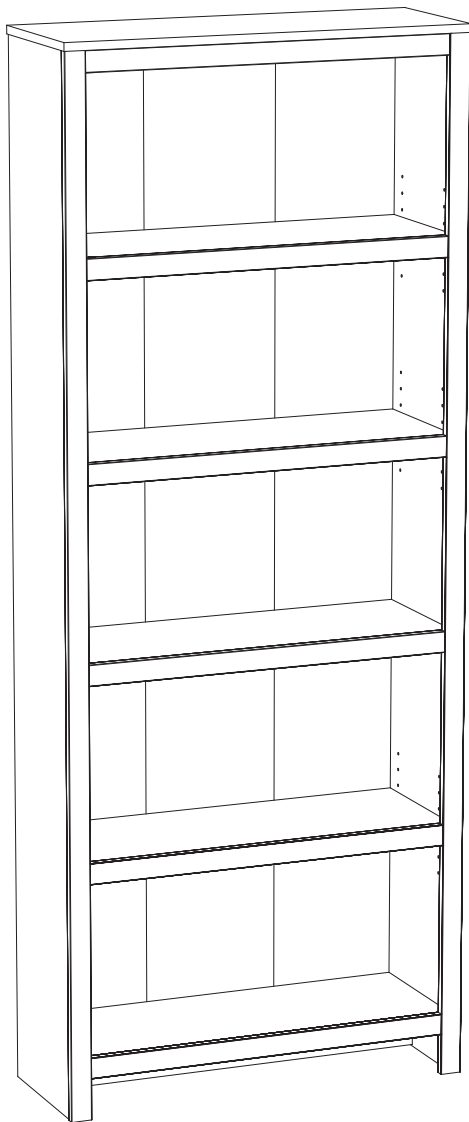


Bookshelf

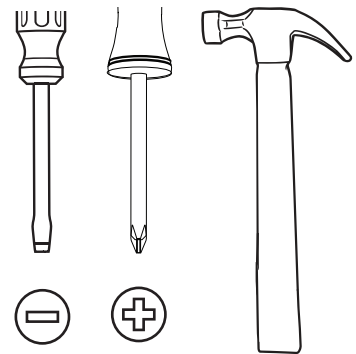
bibliothèque

estantería de



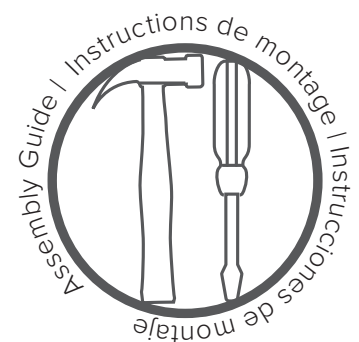
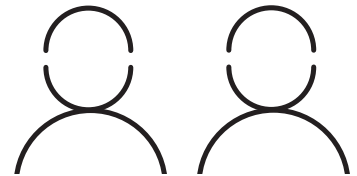
Tools

Vous aurez besoin / Necesitarás



2 person recommended

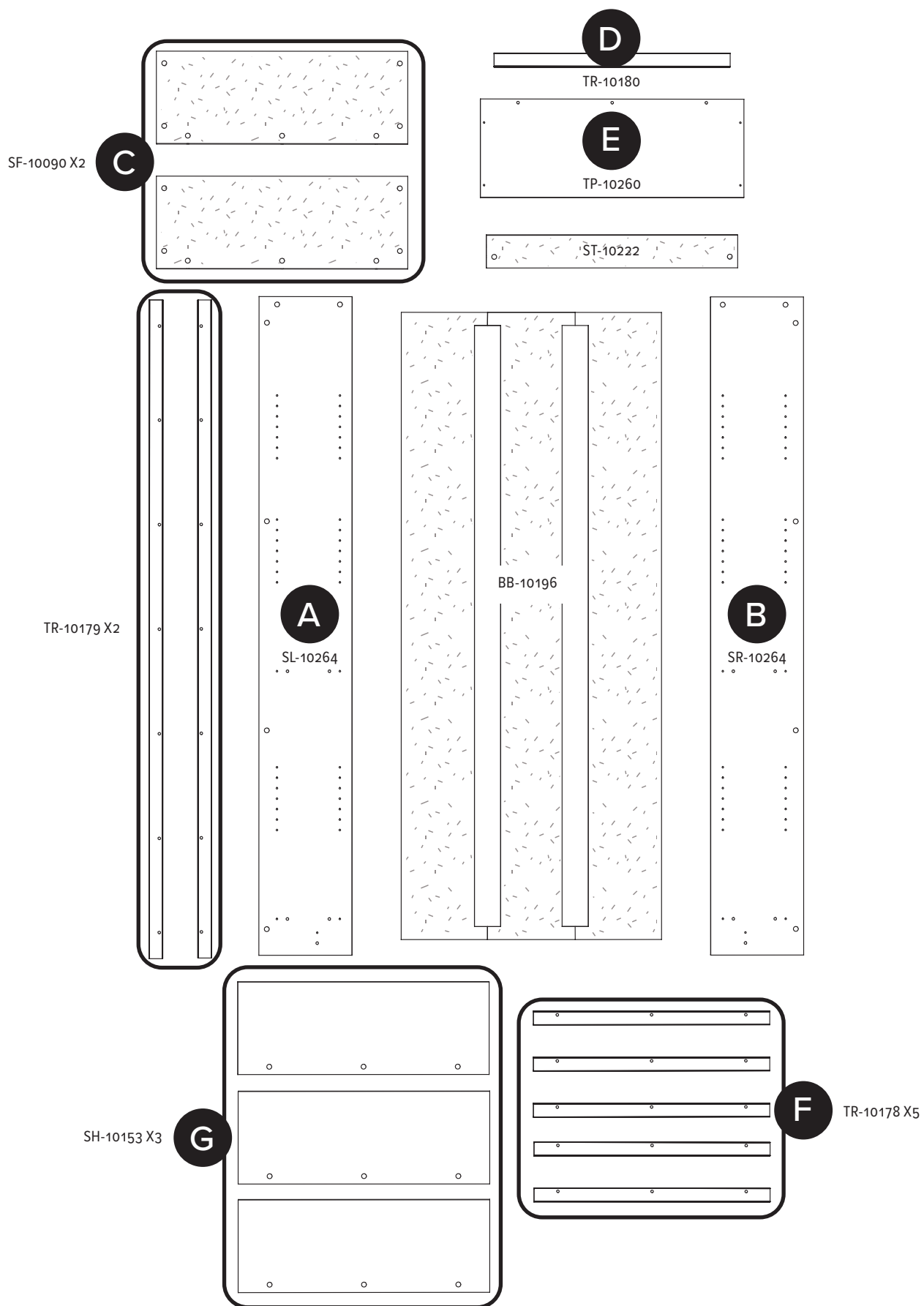
2 personnes recommandées /
2 personas recomendadas

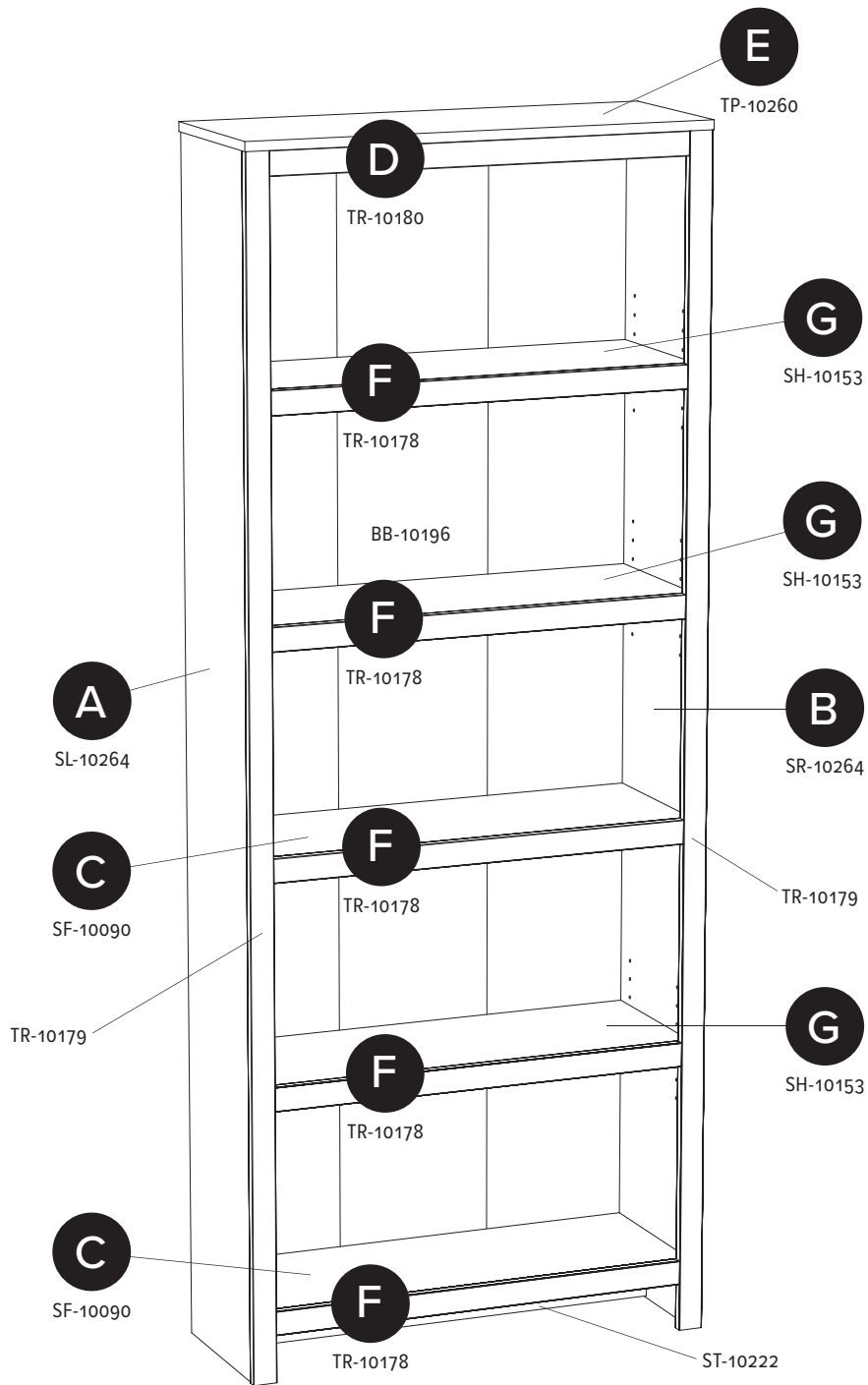


Parts

Pièces

Piezas





Hardware

Quincaillerie

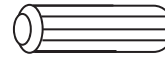
Piezas de Conexión

37 X



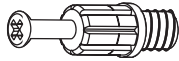
RM-0103

16 X



RM-0069

14 X



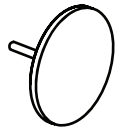
RM-0501
GREEN

34 X



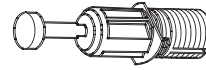
RM-0022

24 X



RM-0802

23 X



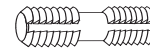
RM-0583
BLUE

12 X



RM-0010-COLOR

3X



RM-0072

1X

Tipover Restraint Kit

Kit anti-basculement

Kit de sujeción contra volcaduras

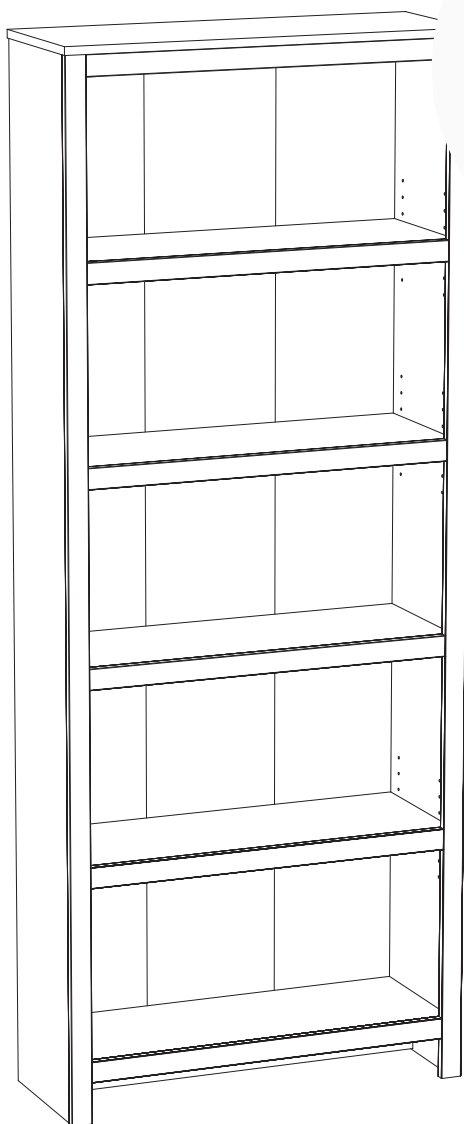
HP-1088



Assemble in 14 steps

Assemblage en 14 étapes

Montar en 14 pasos

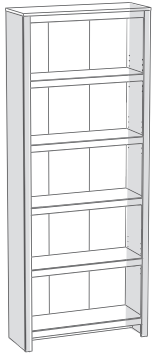


**Let's
start!**

Commençons!

¡Comencemos!

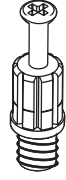
1



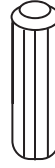
RM-0103



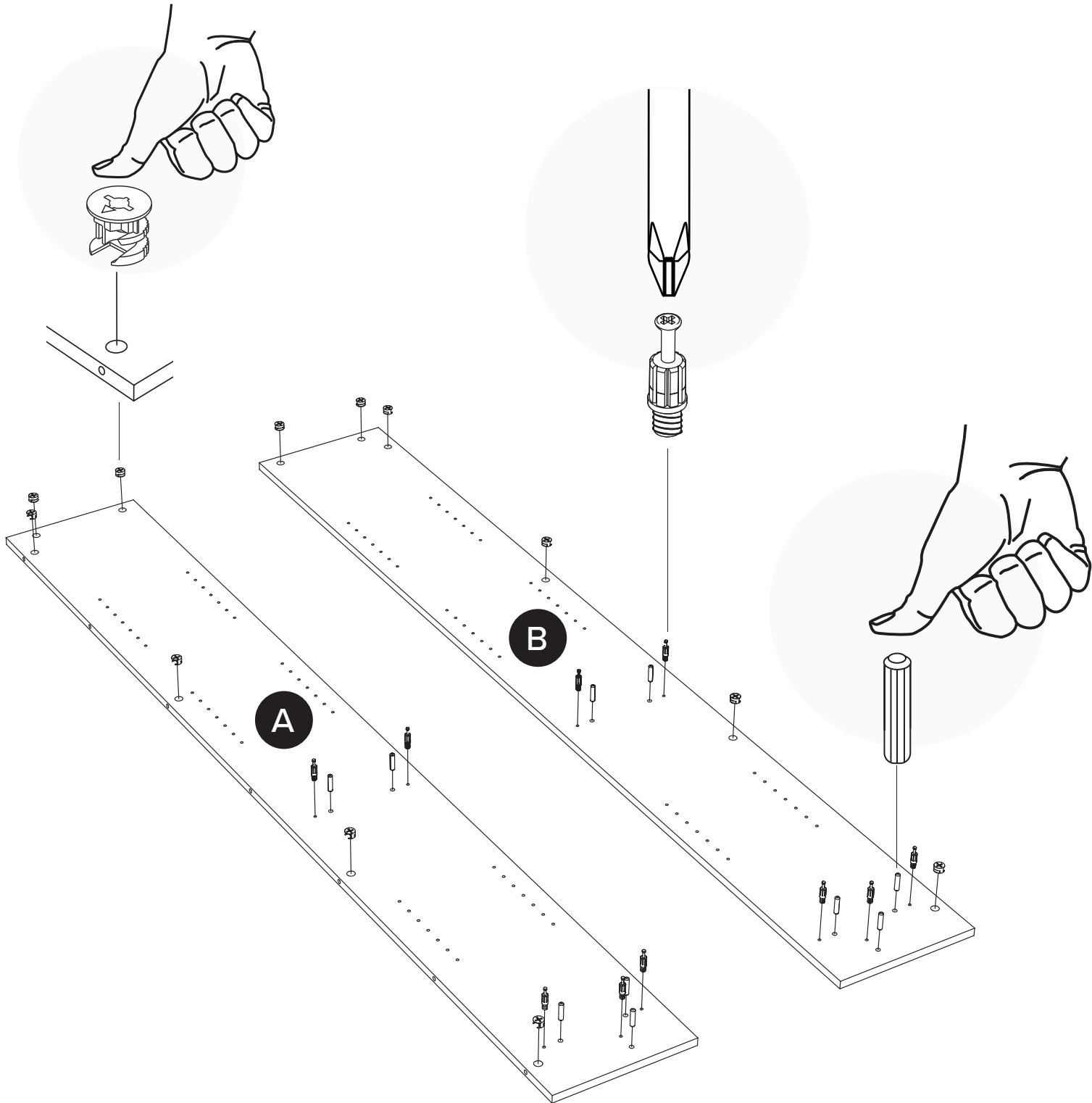
RM-0501
GREEN



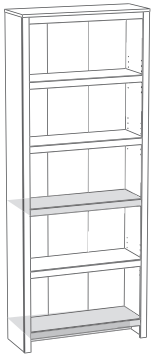
RM-0069



12X 10X 10X



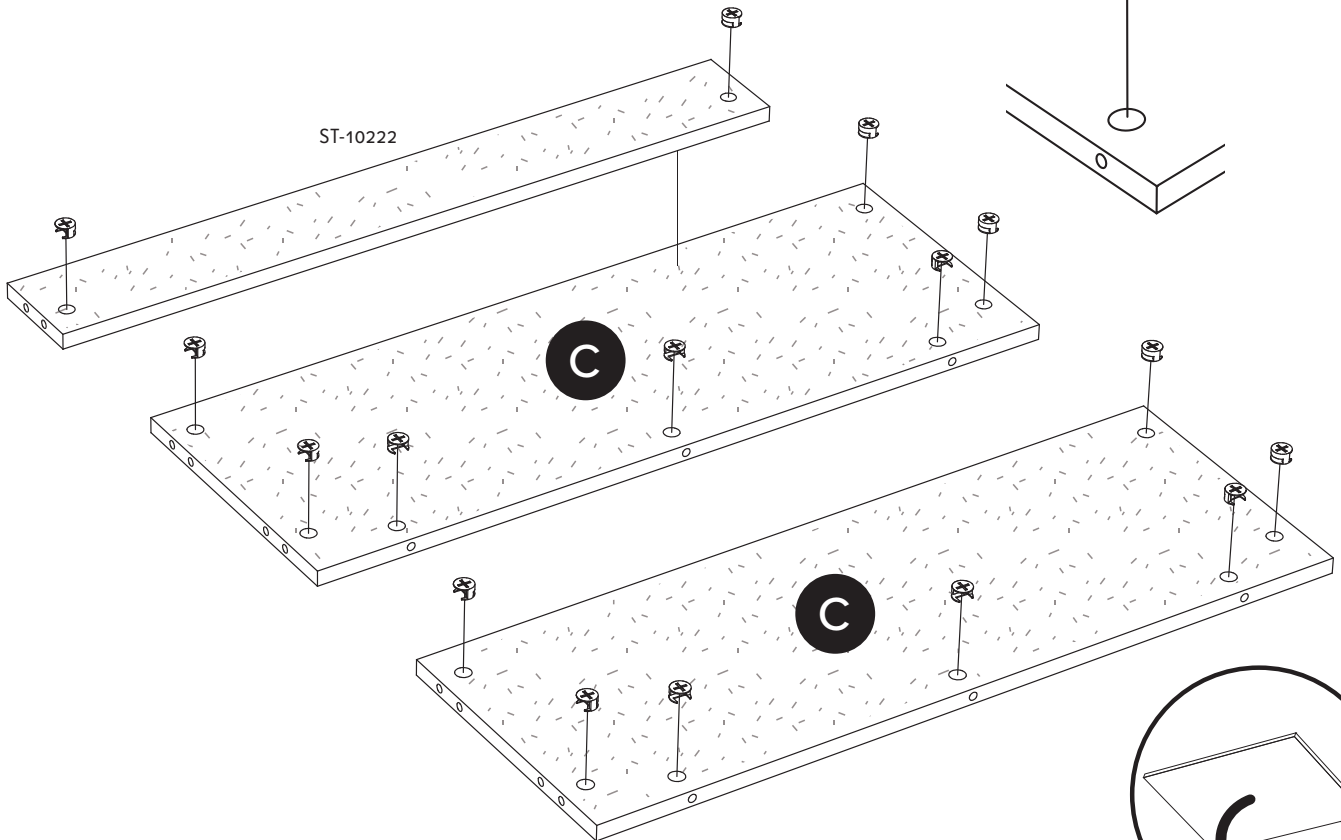
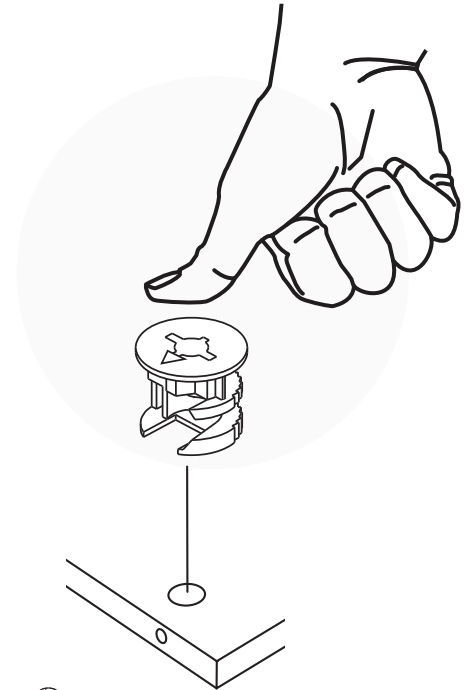
2



RM-0103



16X



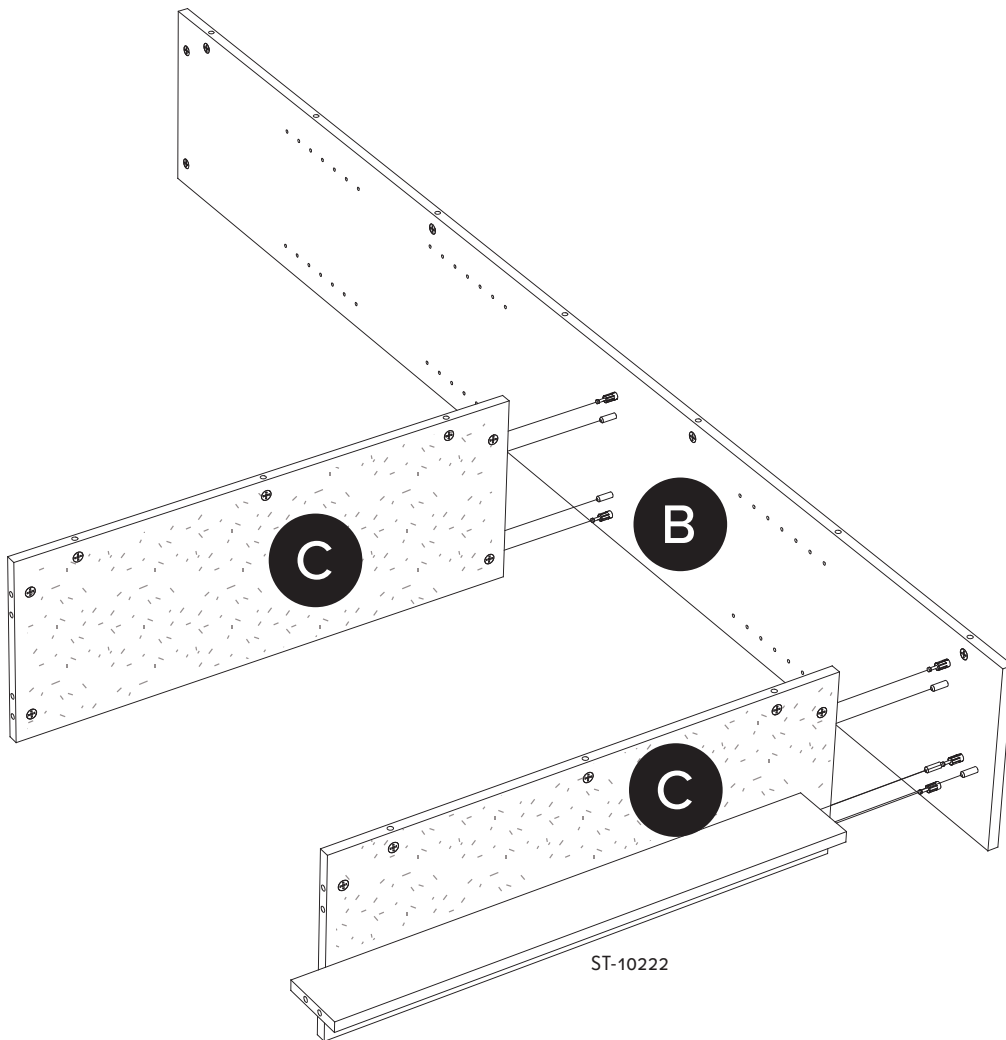
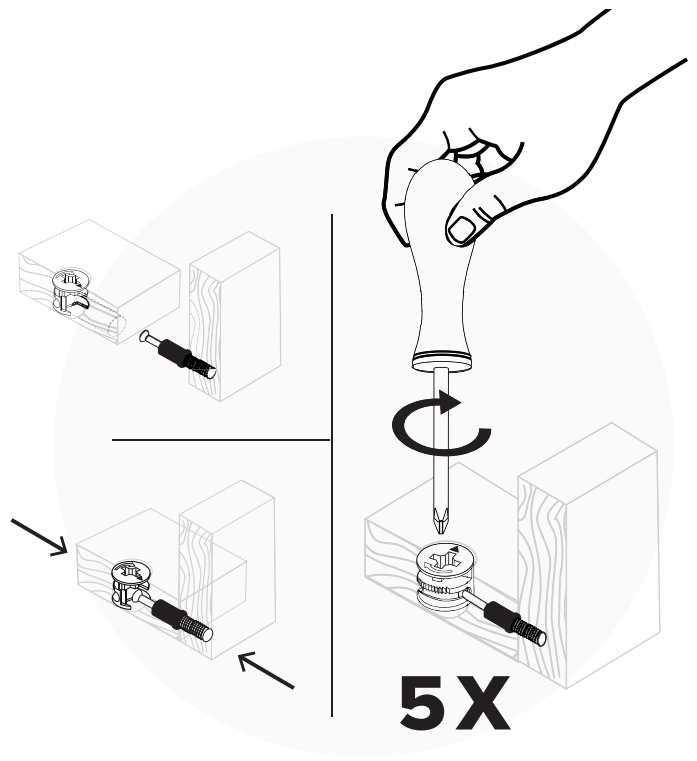
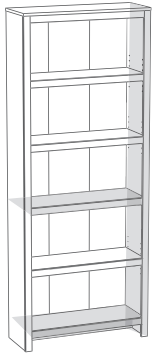
ST-10222

Paper finish facing down

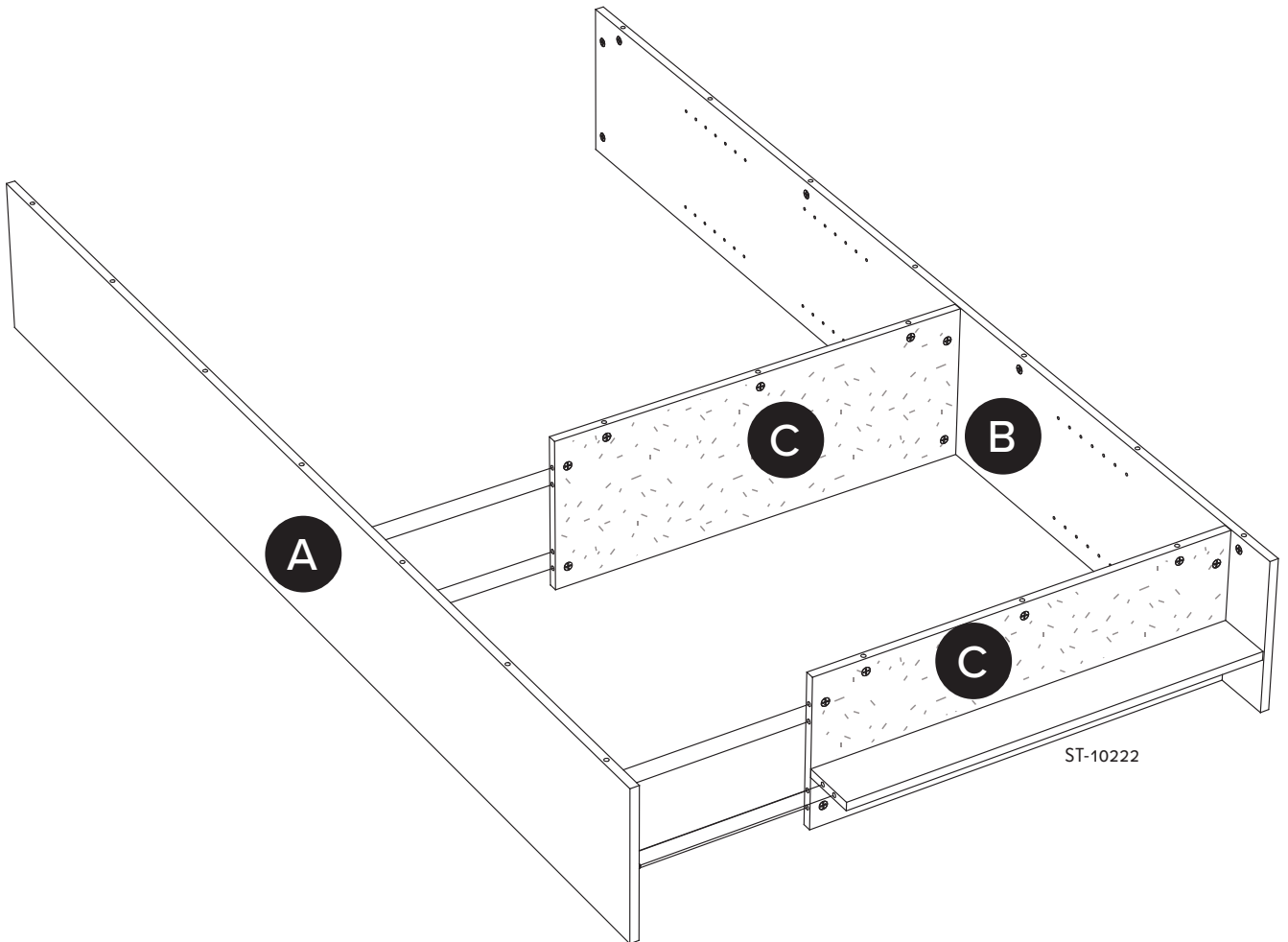
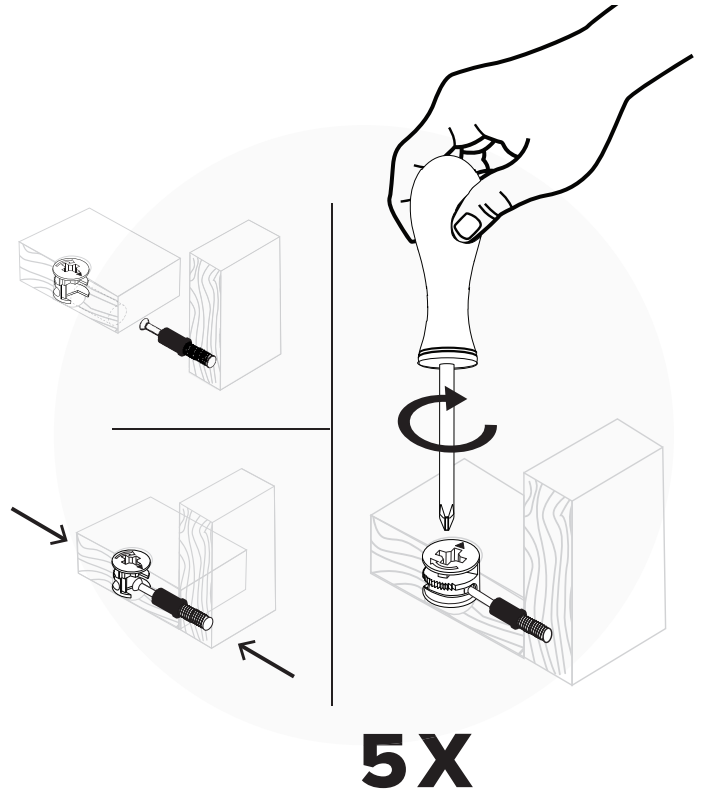
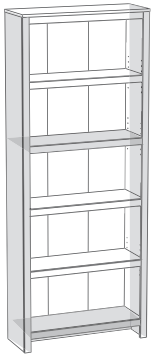
Finition papier vers le bas

Acabado del papel hacia abajo

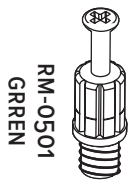
3



4

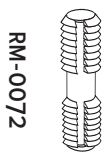


5



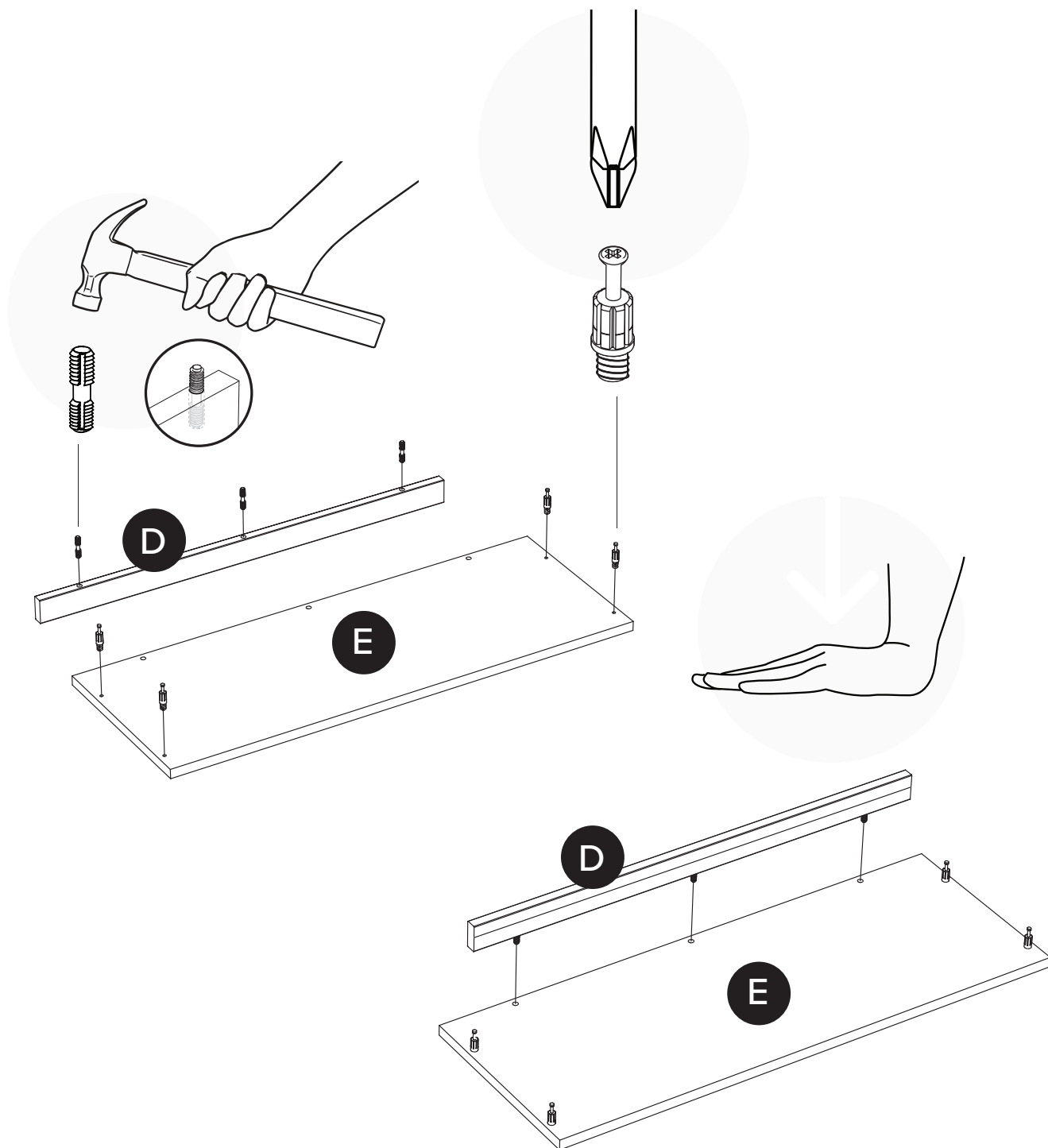
RM-0501
GREEN

4X

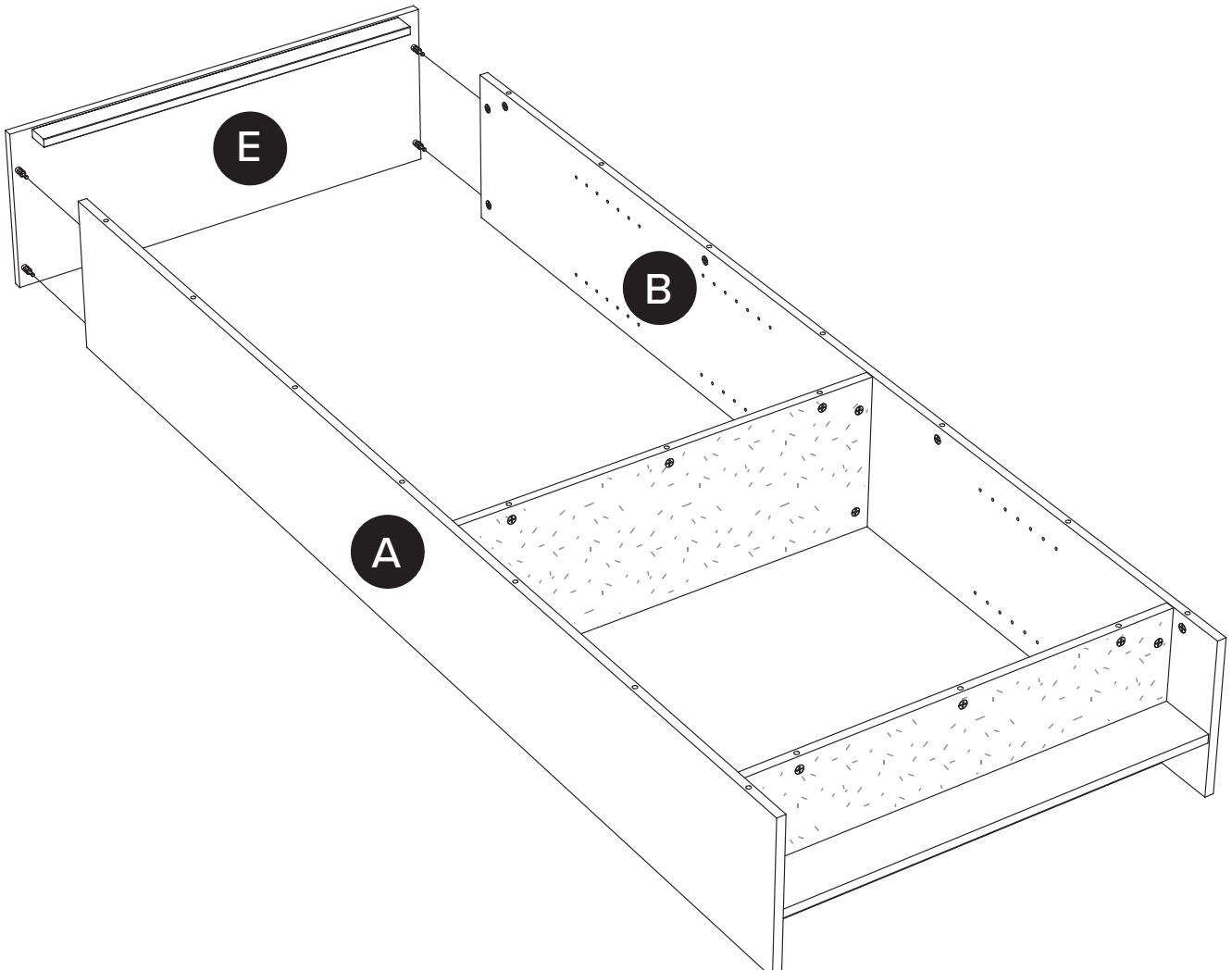
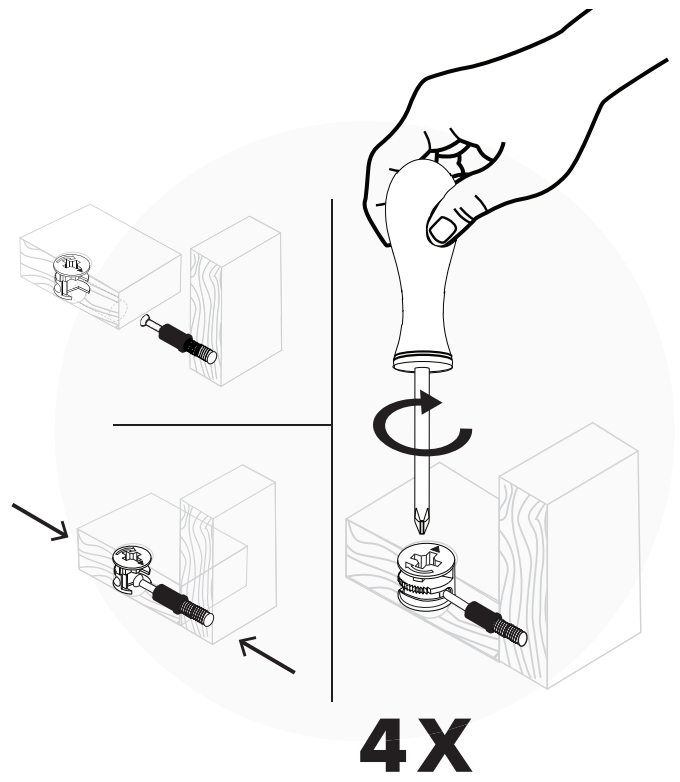
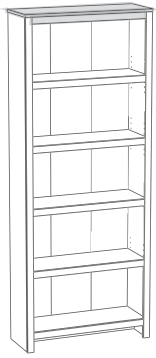


RM-0072

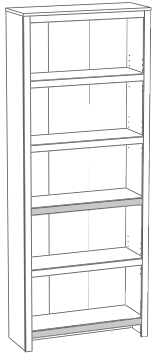
3X



6



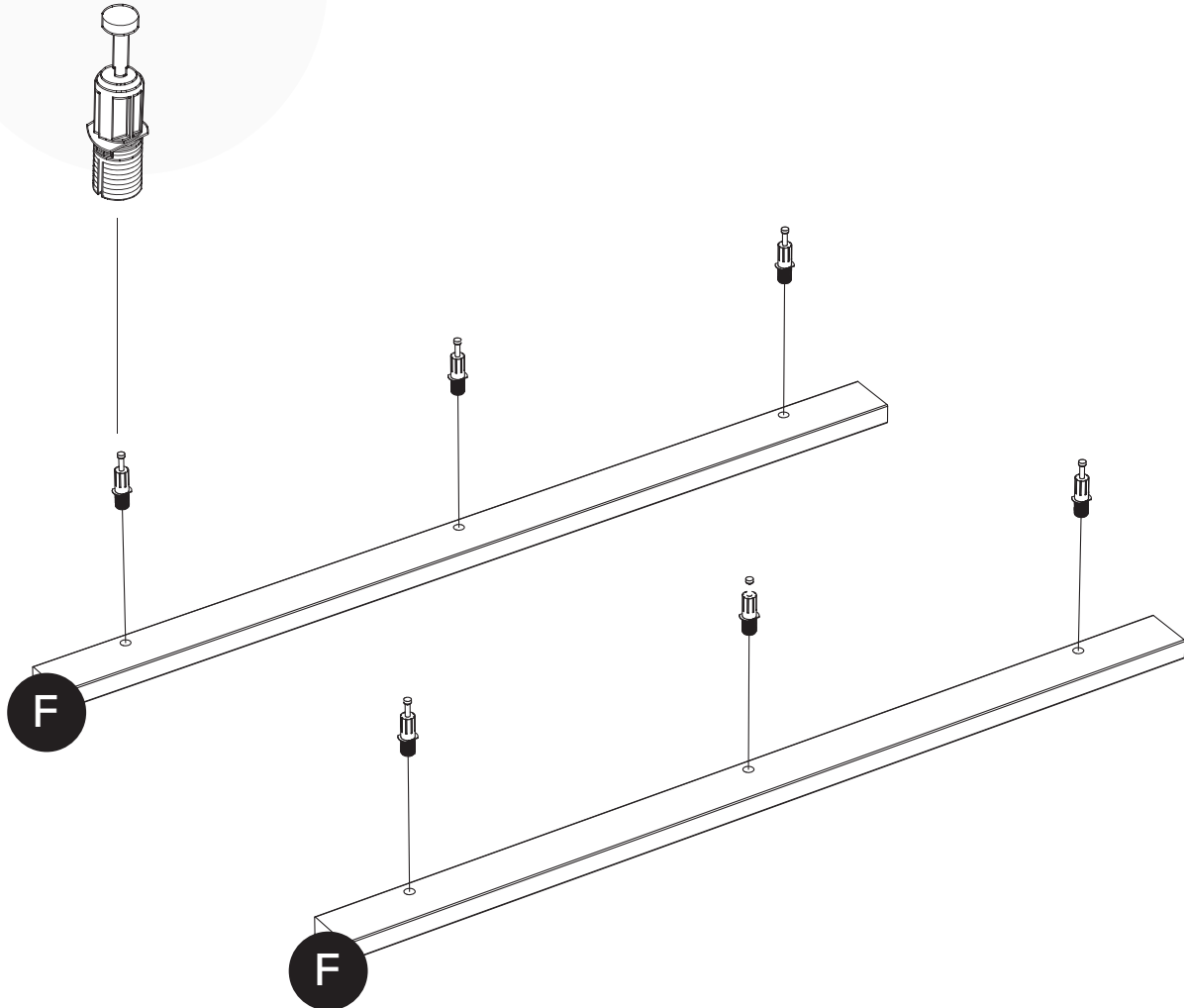
7



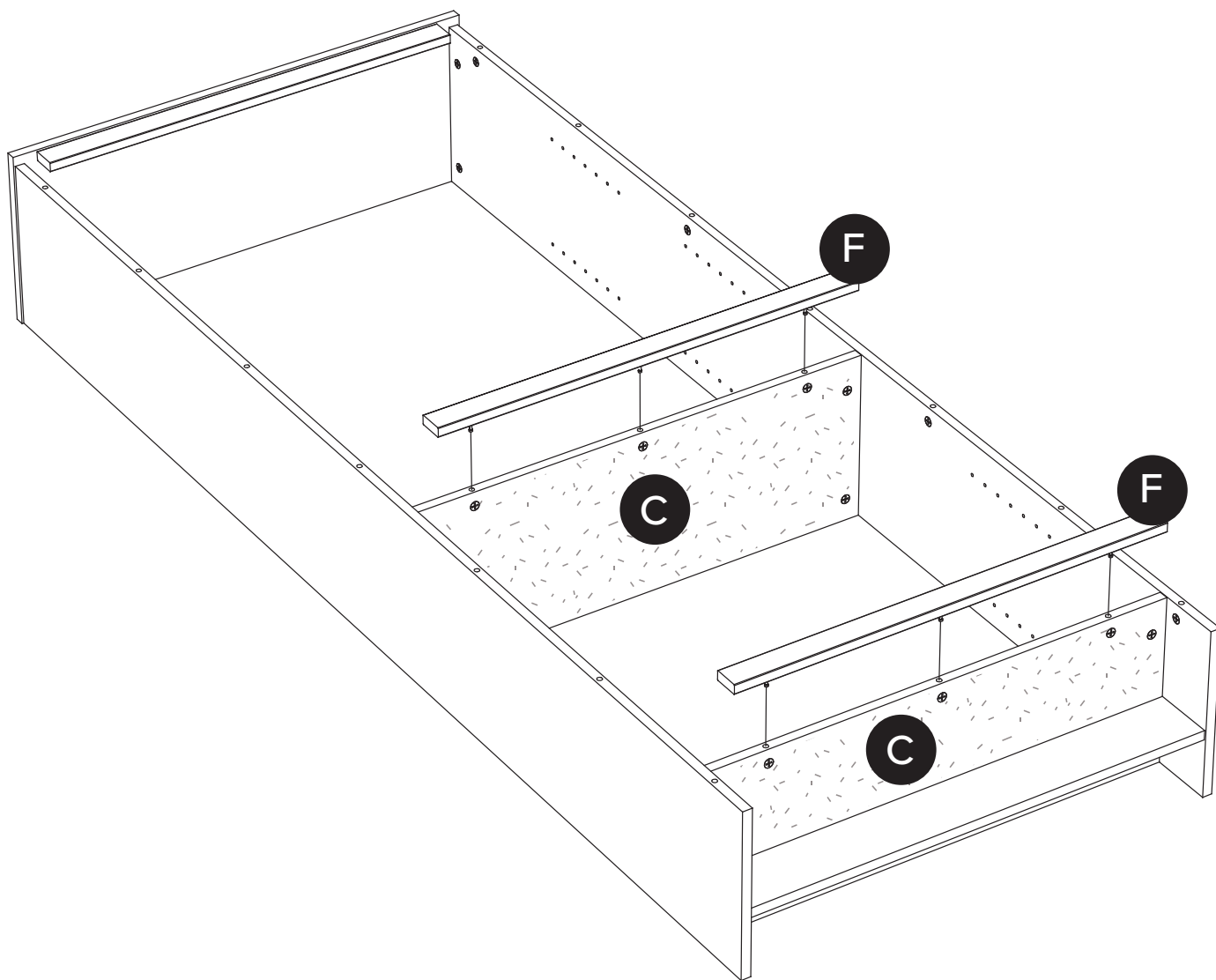
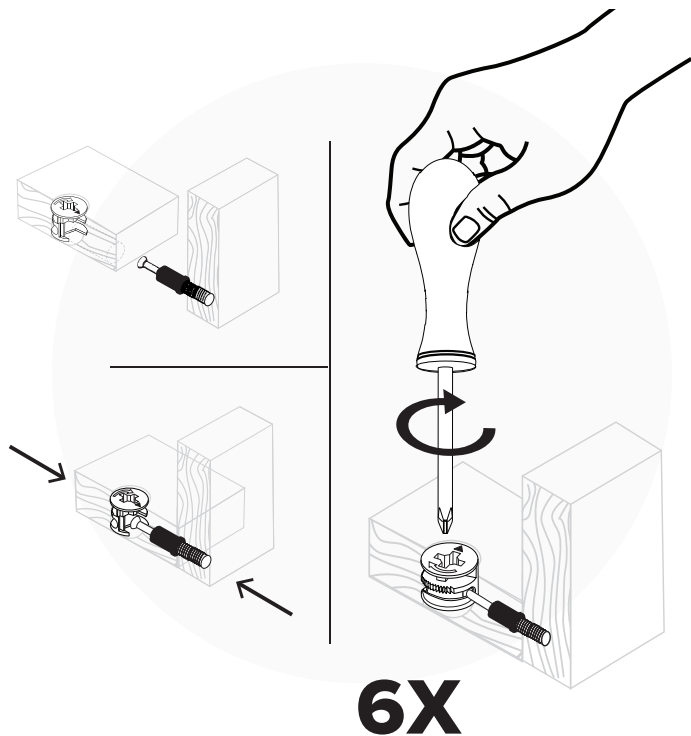
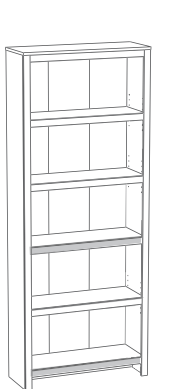
RM-0583
BLUE



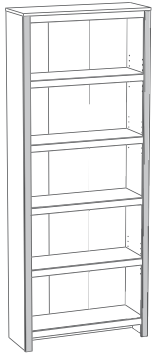
6X



8



9



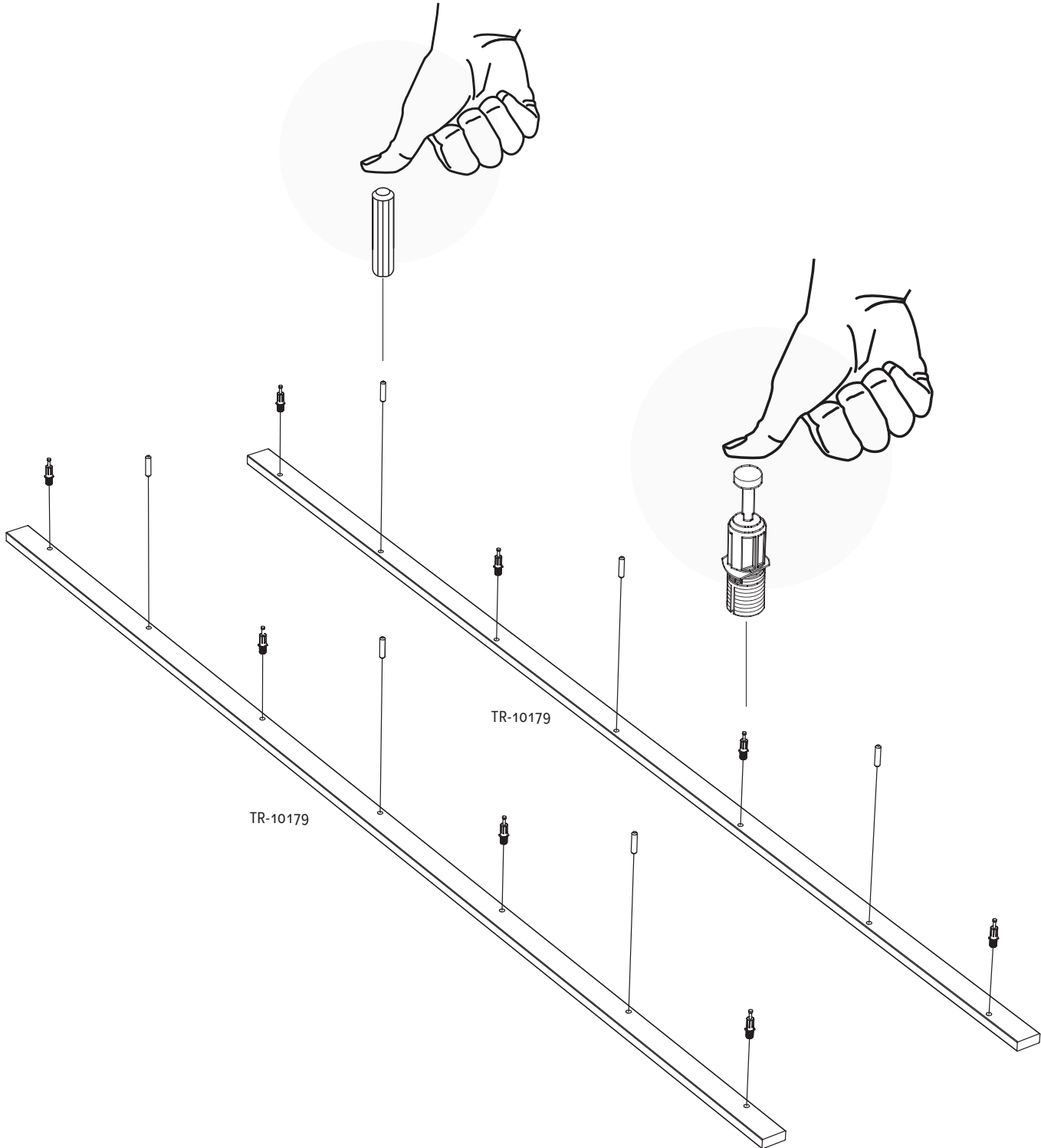
RM-0069



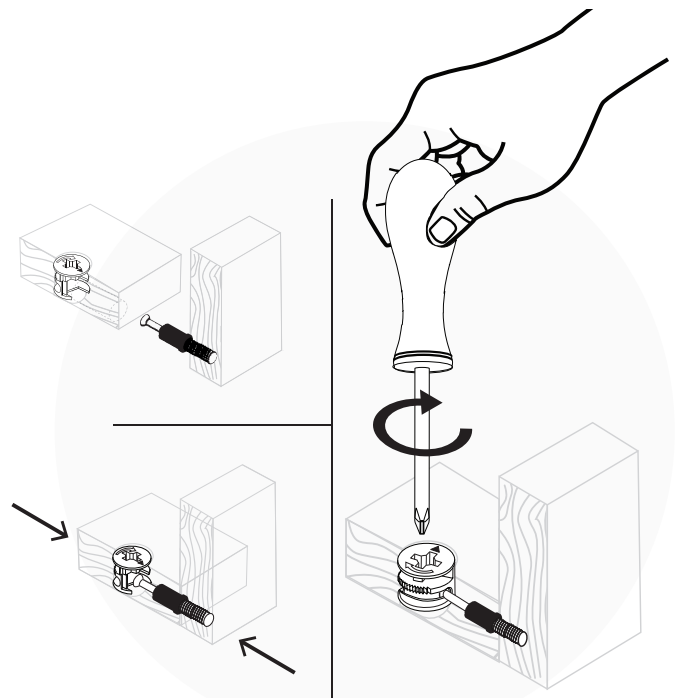
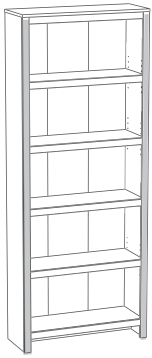
RM-0583
BLUE



6X 8X



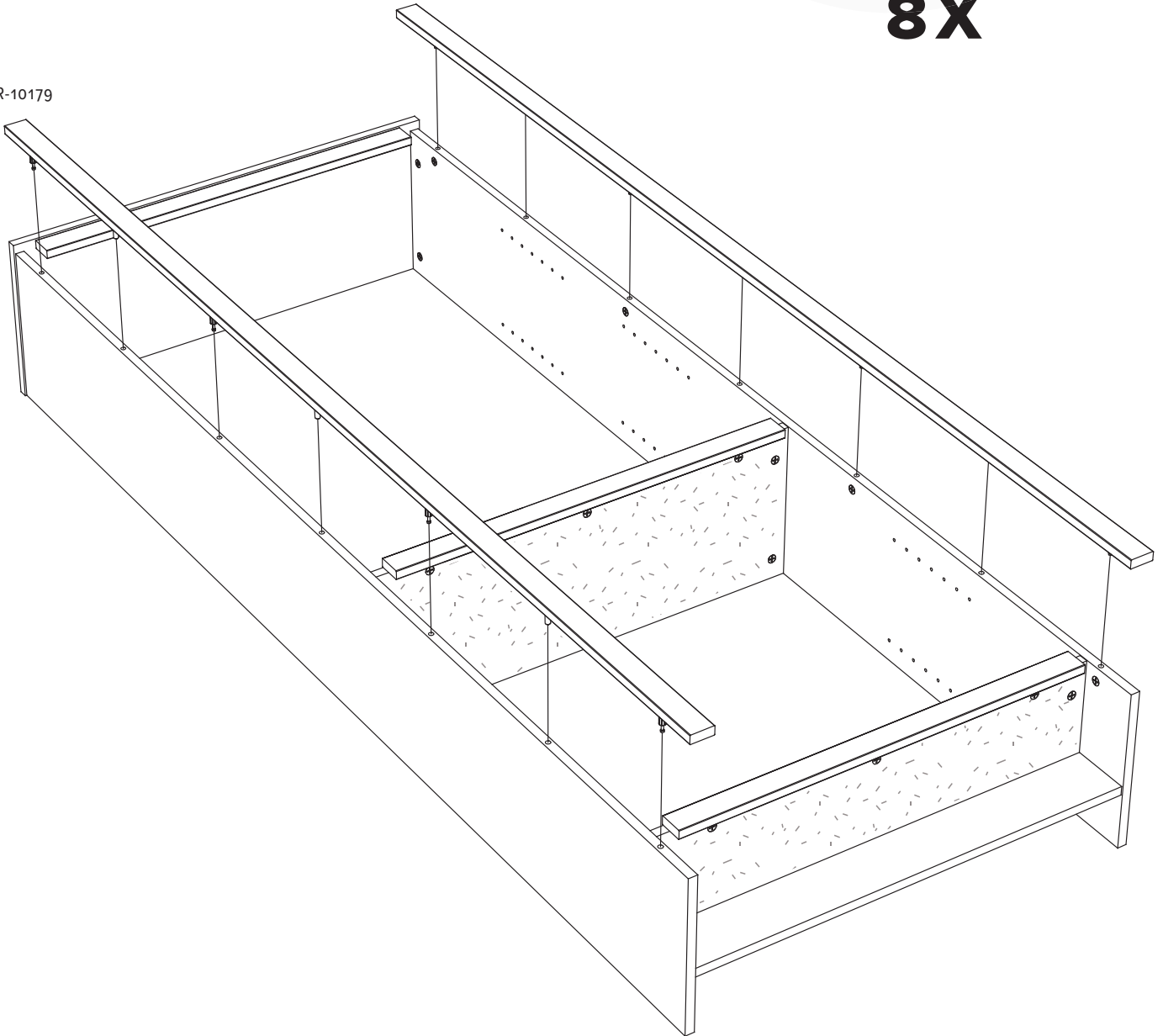
10



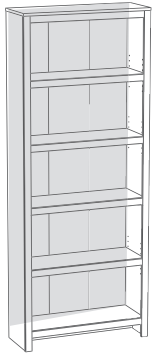
8X

TR-10179

TR-10179



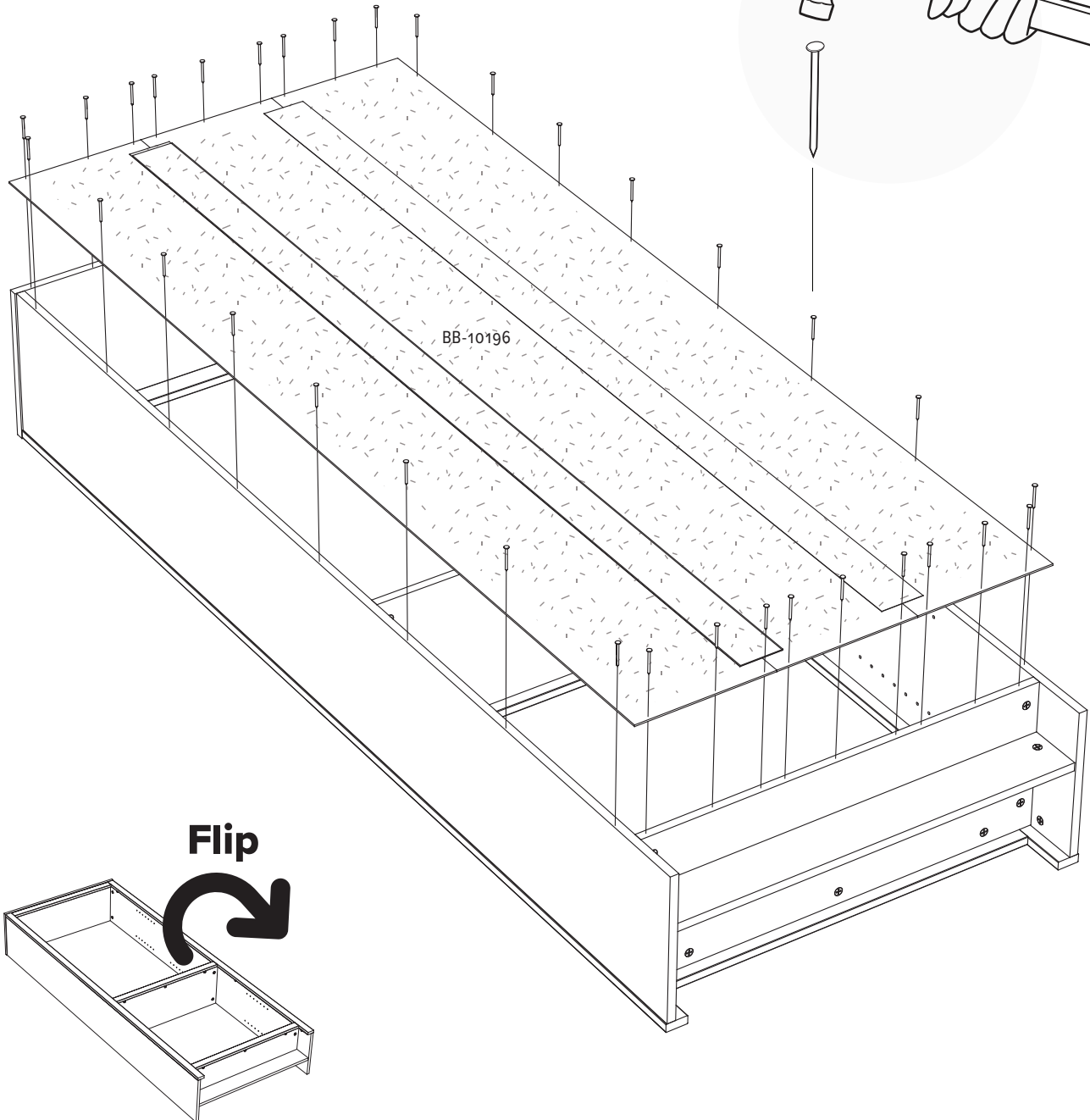
11



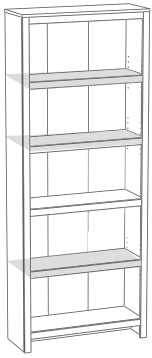
RM-0022



34X



12



RM-0103



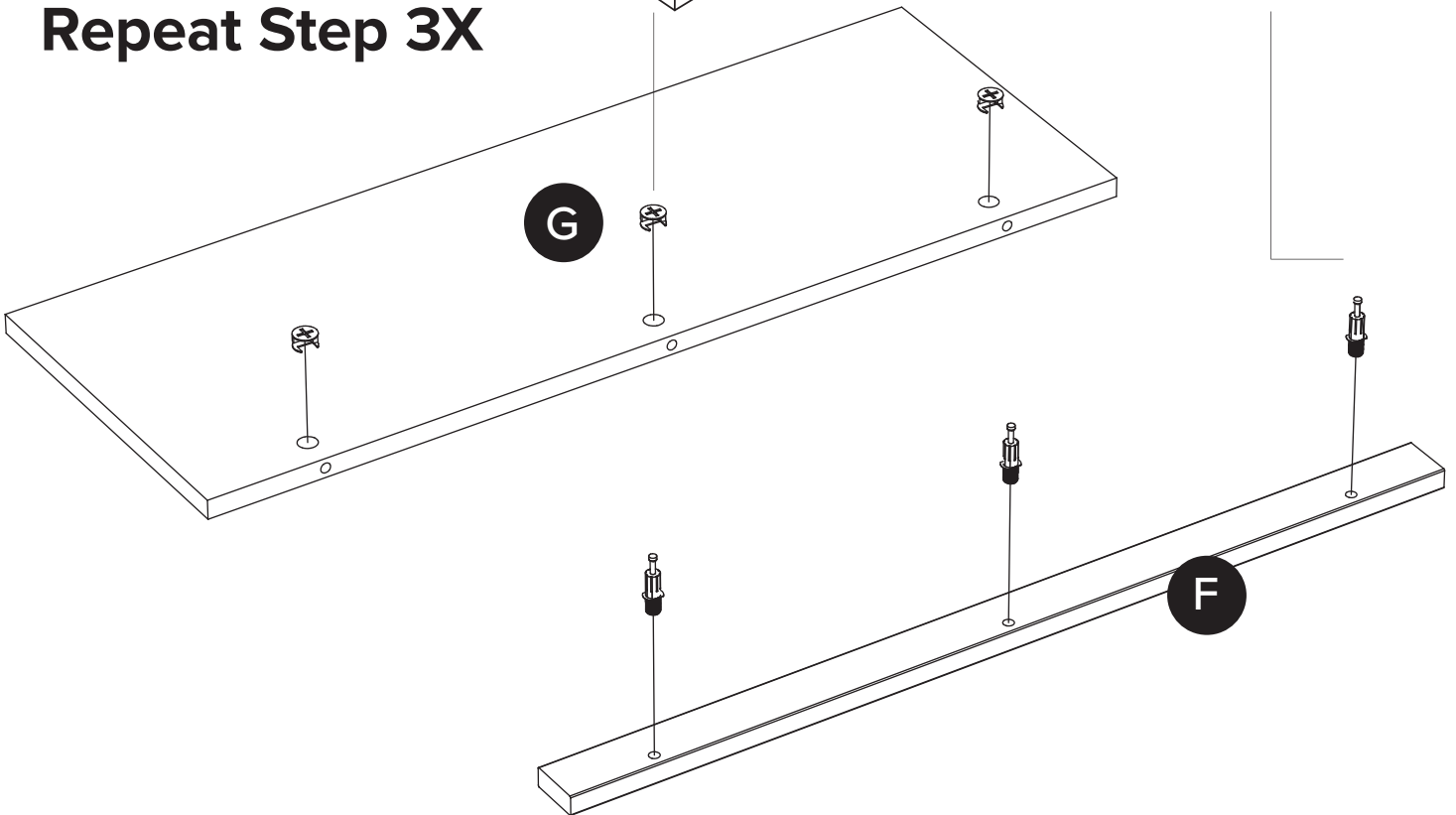
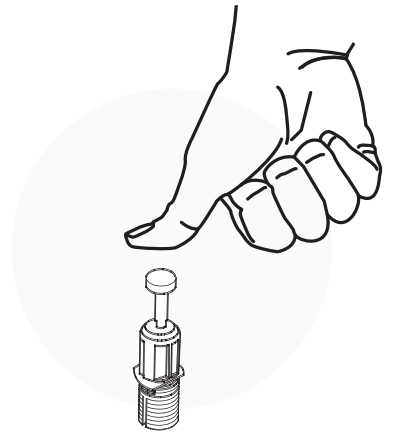
9X

RM-0583
BLUE

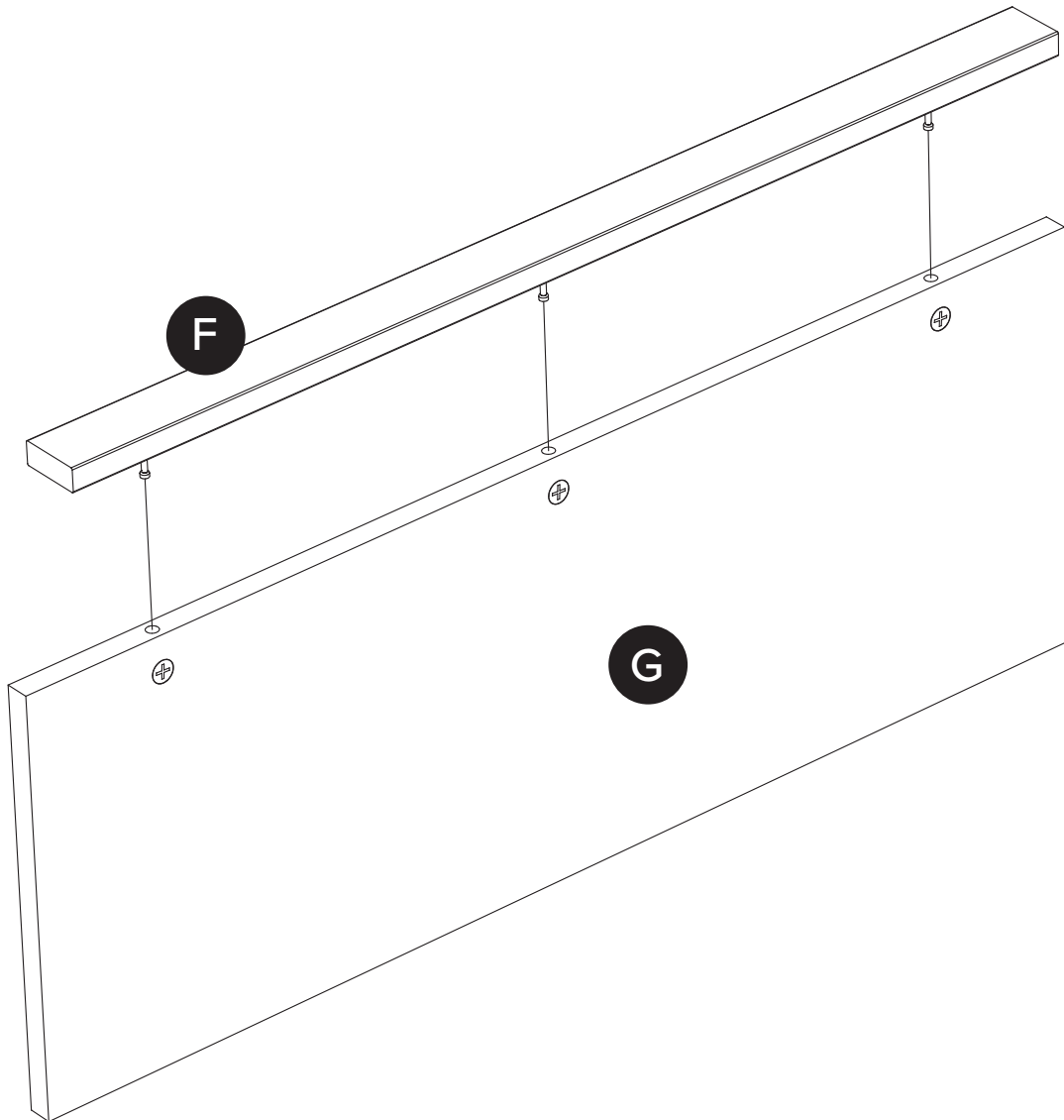
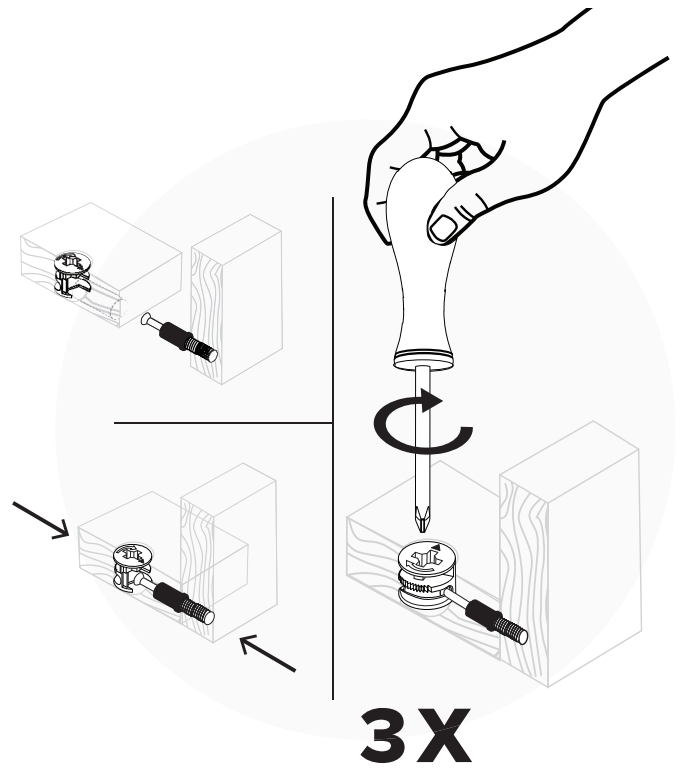
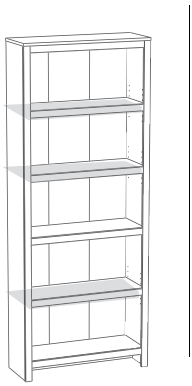


9X

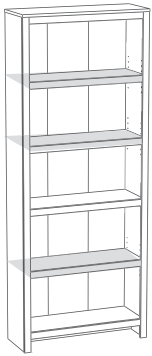
Repeat Step 3X



13



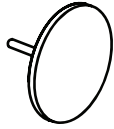
14



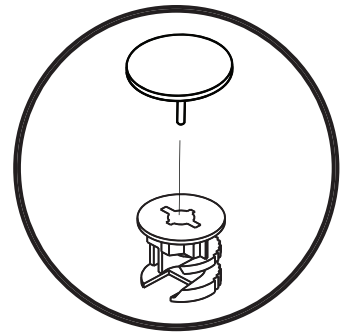
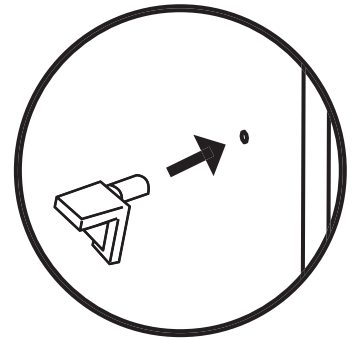
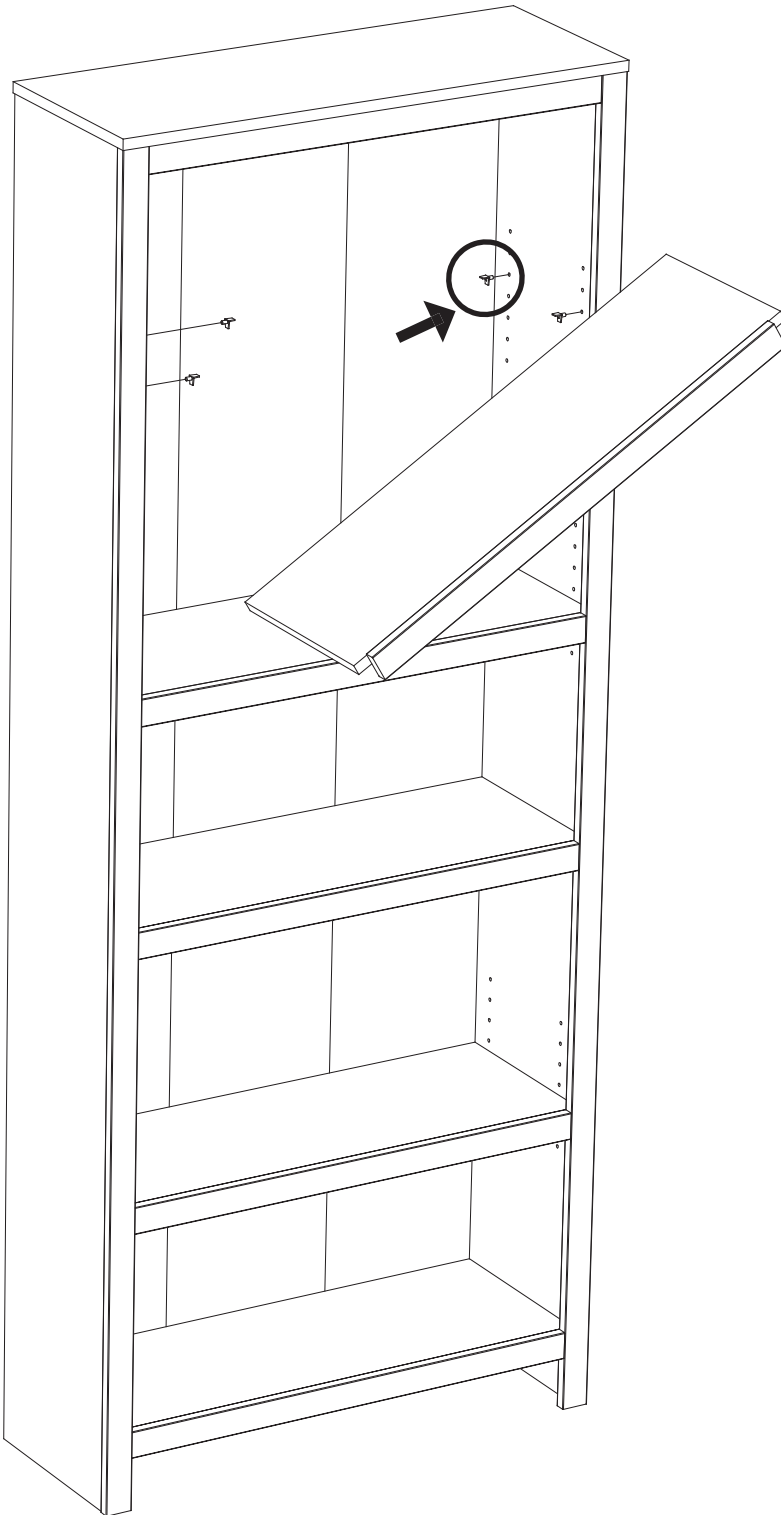
RM-0010-COLOR

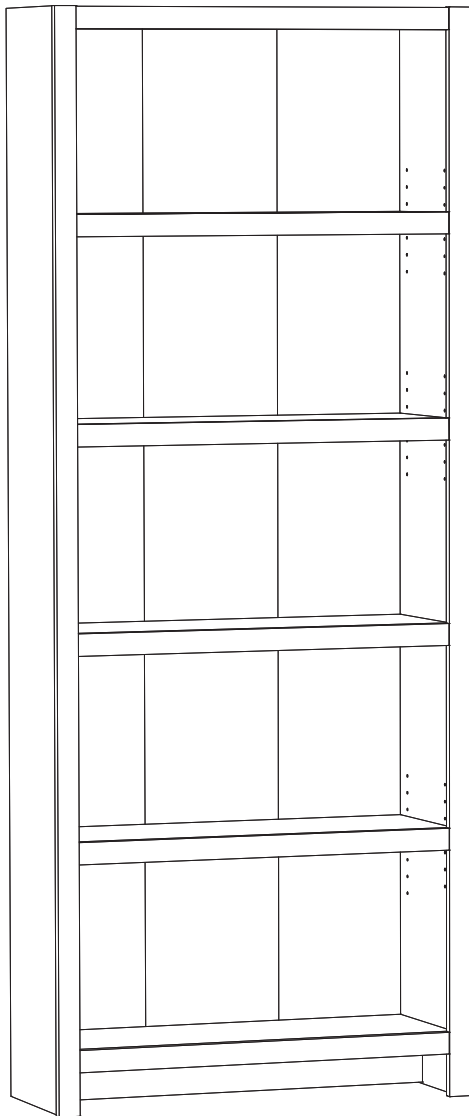


RM-0802



12X 24X





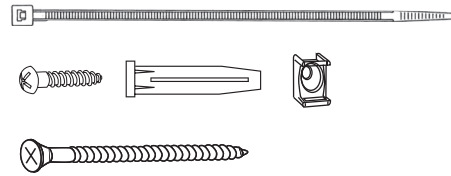
All done!
Good job!

Tout est fait! Bon travail!

¡Todo listo! ¡Buen trabajo!

Tipover Restraint Device

Fixation du dispositif de retenue
Instalando la correa de seguridad



Safety Notice

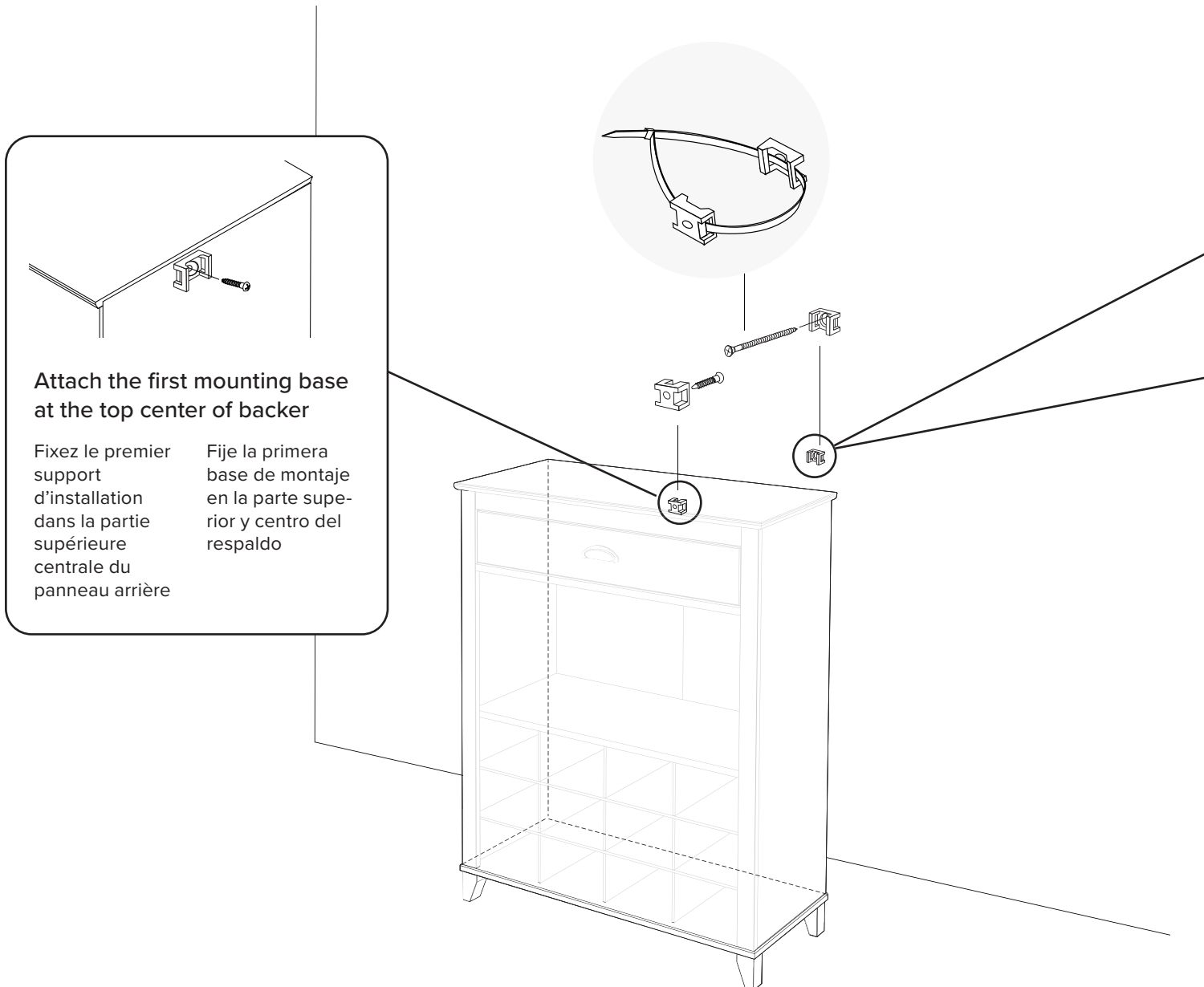
Prepac recommends anchoring furniture in homes where children live or visit and has included an easy to install safety device. Please make sure that it is installed according to the following instructions.

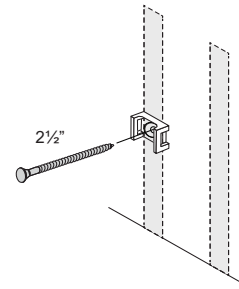
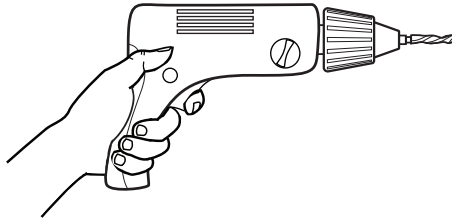
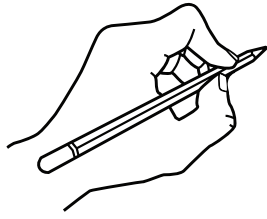
Noticia de seguridad

Prepac recomienda anclar muebles en hogares donde viven niños o ellos visitan. Prepac ha incluido un dispositivo de seguridad de facil instalacion. Por favor seguresse de que esta instalado de acuerdo a las siguientes instrucciones.

Avis de sécurité

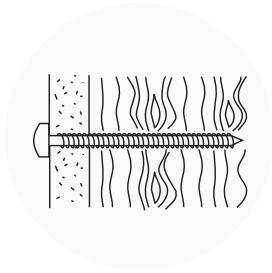
Prepac recommande l'ancrage des meubles dans les domiciles où habitent ou visitent des enfants, d'où l'inclusion d'un dispositif de sécurité facile à installer. Veuillez vous assurer que ce dernier est installé conformément aux présentes instructions.





For walls constructed of wood with drywall

Pour les murs en cloison sèche avec montants en bois
Para paredes construidas de madera con paneles prefabricados



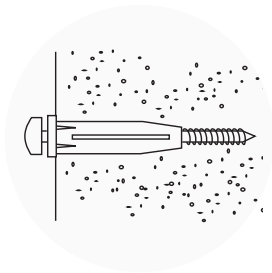
1. With a pencil mark location of second mounting base position
2. Drill pilot hole using an 1/8 inch drill bit 2 inches deep
3. Attach mounting base to wall using the 2 1/2 inch screw provided

1. À l'aide d'un crayon, marquez l'emplacement du deuxième support
2. Percez un avant-trou de 2 po de profondeur avec une mèche de 1/8 po
3. Vissez le support dans le mur à l'aide des vis de 2 1/2 po fournies

1. Con un lápiz marcar la ubicación de la segunda base de montaje
2. Perforar el agujero usando una broca de 1/8 pulgadas 2 pulgadas de profundidad
3. Montar el soporte a la pared utilizando los 2 tornillos de 2 1/2 pulgadas proporcionados

For walls constructed of drywall (unable to hit a stud)

Pour les murs en cloison sèche (où il est impossible de visser dans un montant en bois)
Para muros construidos de drywall (Sin travesaño)



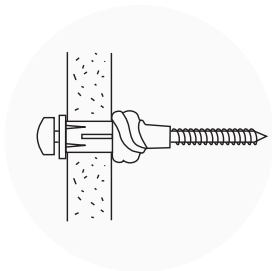
1. Drill pilot hole using a 5/16 inch drill bit only to the depth of drywall thickness
2. Using a rubber mallet or hammer insert wall anchor into drywall
3. Attach holder to wall anchor using 2 1/2 inch screw provided

1. Percez un avant-trou à l'aide d'une mèche de 5/16 po sans dépasser la profondeur de la cloison sèche
2. À l'aide d'un maillet en caoutchouc ou d'un marteau, insérez l'ancrage mural dans la cloison sèche
3. Vissez le support dans l'ancrage mural à l'aide des vis de 2 1/2 po fournies

1. Perforar el agujero utilizando una broca de 5/16 pulgadas solo a la profundidad del grosor del panel de yeso
2. Utilizando un martillo de goma o un martillo insertar el anclaje en pared de yeso
3. Fije el soporte de anclaje a la pared utilizando el tornillo de 2 1/2 pulgadas incluido

For walls constructed of concrete

Pour les murs en béton
Para muros construidos de hormigón



1. Drill pilot hole using a 5/16 inch drill bit 2 3/4 inches deep
2. Using a rubber mallet or hammer insert wall anchor into predrilled hole
3. Attach holder to wall anchor using 2 1/2 inch screw provided

1. Percez un avant-trou de 2 3/4 po de profondeur avec une mèche de 5/16 po
2. À l'aide d'un maillet en caoutchouc ou d'un marteau, insérez l'ancrage mural dans le trou
3. Vissez le support dans l'ancrage mural à l'aide des vis de 2 1/2 po fournies

1. Perforar un agujero de 2 3/4 de profundidad utilizando una broca de 5/16 pulgadas
2. Utilizando un martillo de goma o un martillo insertar el anclaje en el agujero preperforado
3. Fije el soporte de anclaje a la pared utilizando el tornillo de 2 1/2 pulgadas incluido

Bookshelf

bibliothèque

estantería de

