

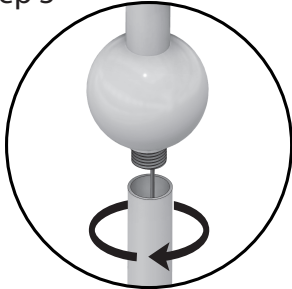


**CAUTION**

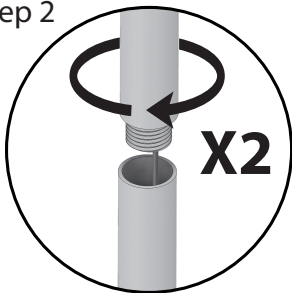
• Inspect the wire insulation for any cuts, abrasions, or exposed copper that may have resulted during shipping. If there is a defect in the wire, do not attempt installation.

• Before starting installation of this fixture or removal of a previous fixture, disconnect the power by turning of the circuit breaker or by removing the fuse at the fuse box.

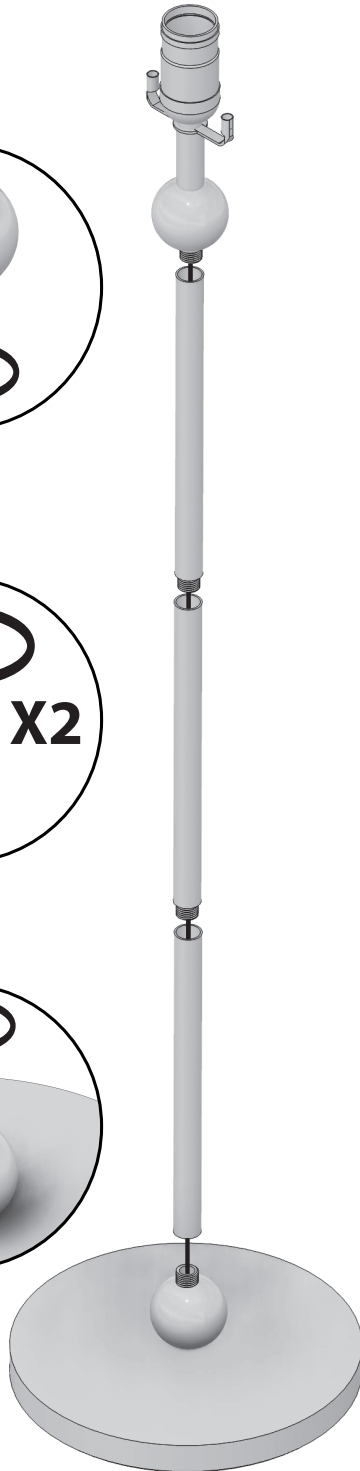
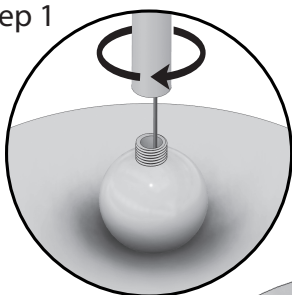
Step 3



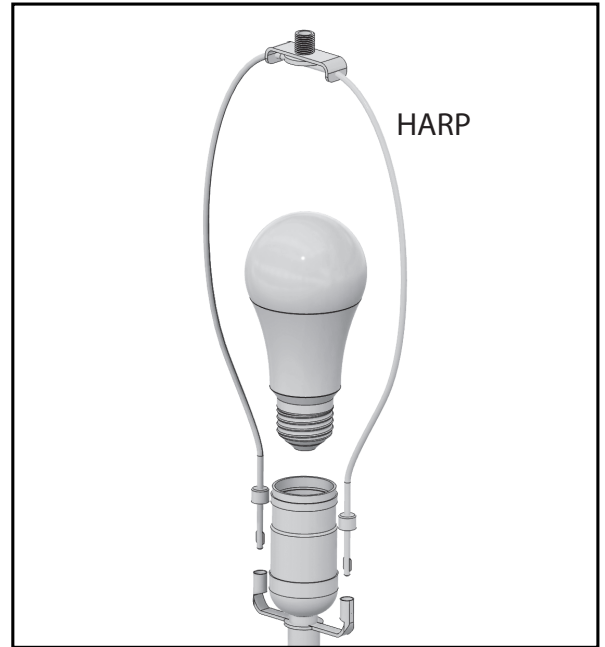
Step 2



Step 1

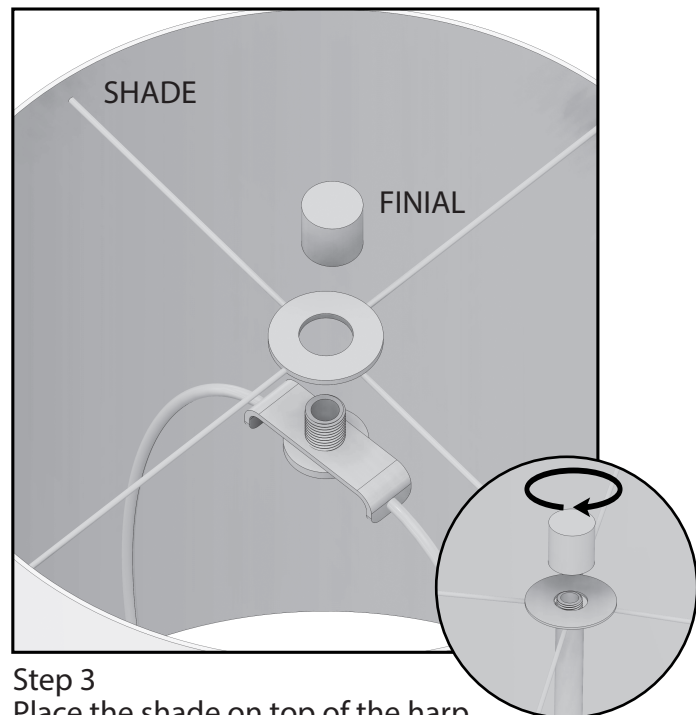


Assemble the fixture by screwing the parts together until it is secure taking care not to over tighten or to tangle or twist the branch wires.



Step 2

Attach the Harp to the fixture and Install a bulb (not included). E26 TYPE A 60 Watt or less watt.



Step 3

Place the shade on top of the harp and complete the assembly with the finial.