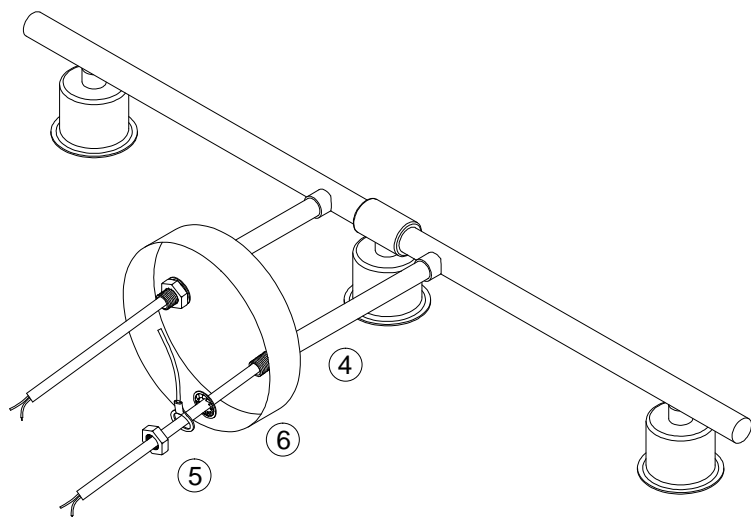


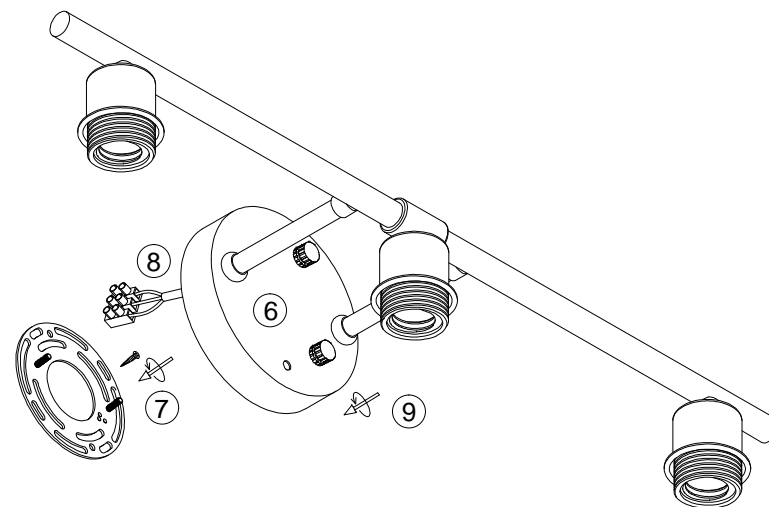
1. Connect the tube ① to the joint ② with mini screw ③.
2. Let the wire go through the tube ④, turn to connect tube ④ with tube ①.



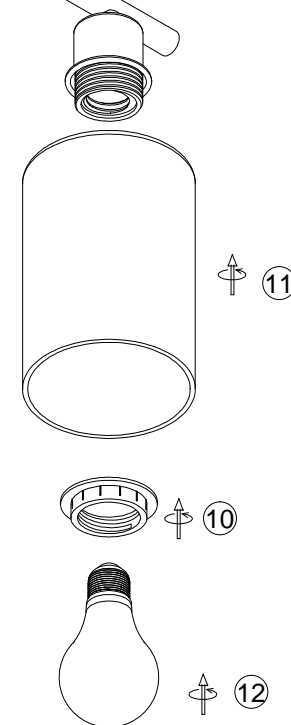
3. Install the fixture with canopy ⑥ together with nuts ⑤ (note the earth wire should be between two nuts).

Please read carefully before installation!!!

Note : Please make sure that the electricity is powered off during installation !
Only a professional electrician should install this kind of product !



If the glass shade was broken during the transportation, please contact us to get a free replacement of the lampshade.



4. Install the bracket to the junction box with screw.
5. Connect the wire with connector ⑧ to your home line .
6. Install the fixture on the bracket with nuts ⑨.
7. Install the lampshades ⑪ with ring ⑩, after that install the bulbs ⑫