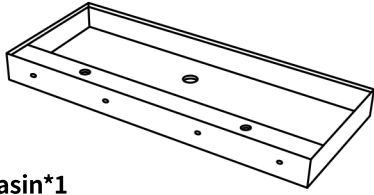


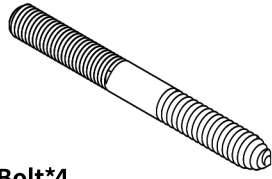
Basin installation Instructions

Model: FS106-1200LTK

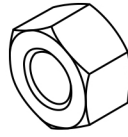
Components:



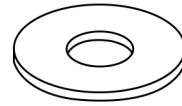
Basin*1



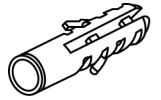
Bolt*4



Nut*4

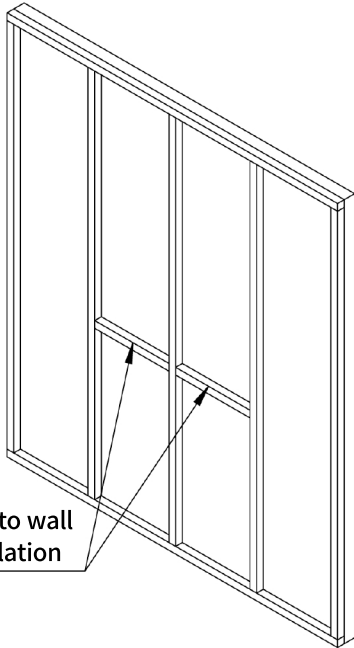


Metal Washer*4



Expansion screw plastic*4

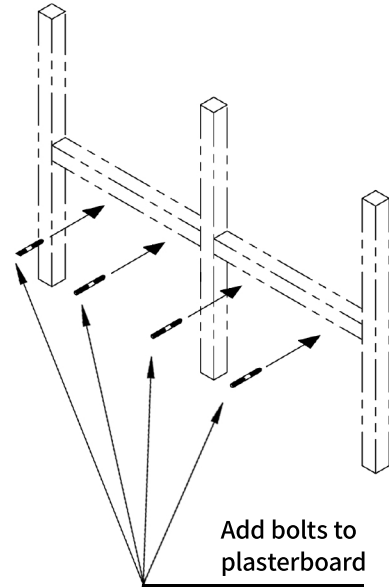
<1>



Add battens to wall before installation

Note: Product can be mounted on both concrete or timber-framed walls.

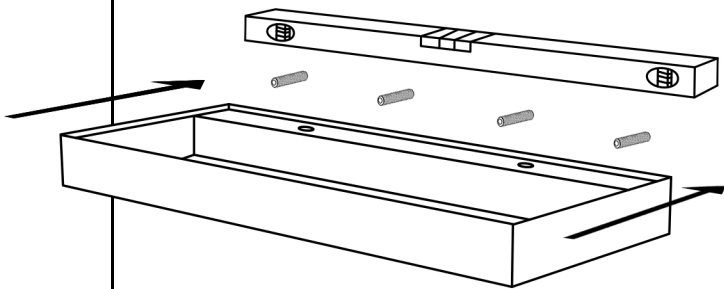
<2>



Add bolts to plasterboard

⚠ Important! Before installing, ensure there is sufficient timber framing in the wall to securely fasten your basin to.

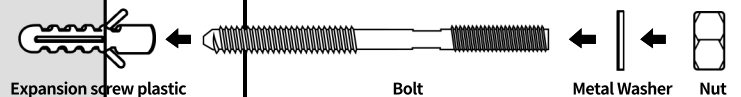
<3>



Before fixing the basin in place, ensure that the basin is sitting level.

<4>

Basin(side)



Expansion screw plastic

Bolt

Metal Washer

Nut

Screw a metal nut onto each fixing bolt to secure the basin.
Caution: do not over tighten as this may damage the basin/top.