

# ASSEMBLY INSTRUCTIONS

## BLK/ESP/RED/WHT/MIN/GRY/WAL/GRN

ASSEMBLY  
REQUIREMENTS:

1-Person  
Assembly

30 Minutes  
Assembly Time  
Per Chair  
(Approximate)

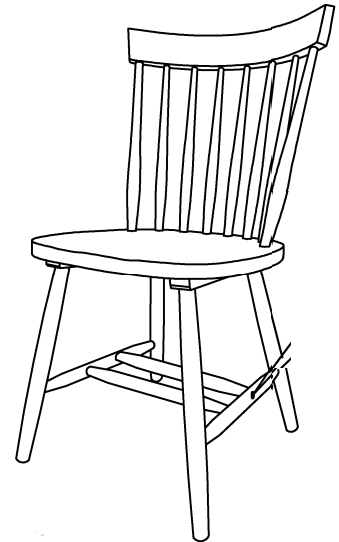
Tools Required:  
(Not Provided)

Phillips  
Screwdriver



### Thank you for purchasing our product!

Please refer and use this assembly instruction to assemble the product. Contact our customer service department in case there are any missing or damage parts or hardware. Replacement parts are normally shipped within 2 or 3 days.



We appreciate your business!

#### ASSEMBLY PREPARATION

1. Remove all packaging materials, staples and packing straps from the carton.
2. Refer to Parts List and Hardware List and ensure they are complete before you start assembling.
3. Place all wooden parts on a clean, flat and soft surface (e.g. carpet or rug) to prevent parts from getting scratched.

#### SAFETY PRECAUTION:

1. KEEP ALL HARDWARE PARTS OUT OF REACH OF CHILDREN.
2. DISPOSE PLASTIC PACKAGING MATERIAL IMMEDIATELY TO AVOID ANY RISK OF SUFFOCATION TO CHILDREN AND ANIMALS.

#### TIPS FOR ASSEMBLY:

1. Allow ample room for assembly and in close proximity to where product will be placed.
2. Assemble the product on a surface that does not scratch or damage the exterior gloss and finish of the furniture.
3. Please check all of the parts and quantities are included before assembly. Contact customer service for missing parts.
4. Identify all of the parts, hardware and quantities required for each step.
5. During assembly, do not over-tighten any fittings as this may cause damage.
6. DO NOT USE POWER TOOLS TO ASSEMBLE THIS PRODUCT.
7. Always place the product on a flat surface.
8. Do not sit or stand on the partially assembled product; only use the product for which it is intended.

#### CARE AND MAINTENANCE

- Use a slightly damp cloth to clean the product. Do not use bleach or abrasive cleaning material.
- Check all the fittings periodically and re-tighten as necessary. Do not use the product if any of the parts is damaged or broken.
- Never allow any kind of liquid to remain on your furniture. Absorption can cause wood to warp or delaminate.
- Do not place hot items (e.g. hot drinks) directly onto the wood surface.
- Do not drag and/or pull the furniture.

This product is for indoor and household use only - not for commercial use.



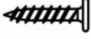


# ASSEMBLY INSTRUCTIONS

## BLK/ESP/RED/WHT/MIN/GRY/WAL/GRN

### PARTS LIST (FOR 1 COMPLETE CHAIR)

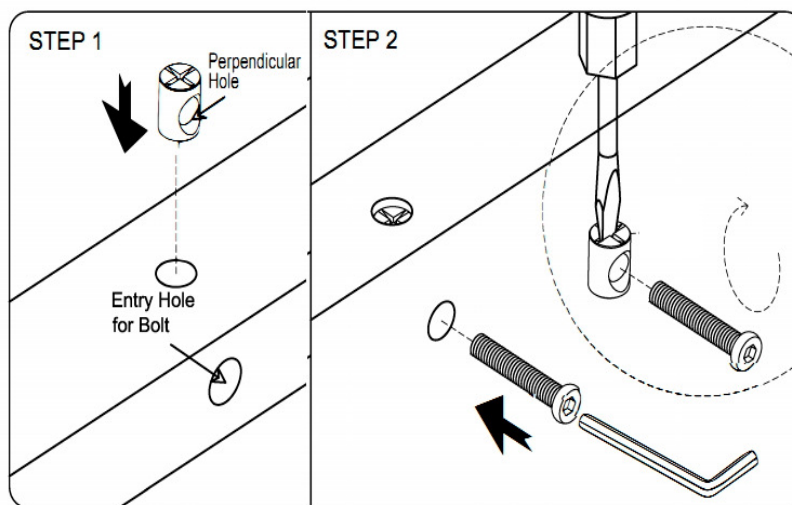
No	DESCRIPTION	Qty
A	Chair Back	1
B	Legs Frame	2
C	Stretchers ( Short)	1
D	Stretchers ( Long)	1

### HARDWARE LIST (FOR 1 COMPLETE CHAIR)

No	DESCRIPTION	Qty
E	JCBC Bolt M6 x 50 mm 	2
F	Barrel Nut 	2
G	JCBC Screw M7 x 35mm 	6
H	Allen Key 	1
I	Wood Button 	2

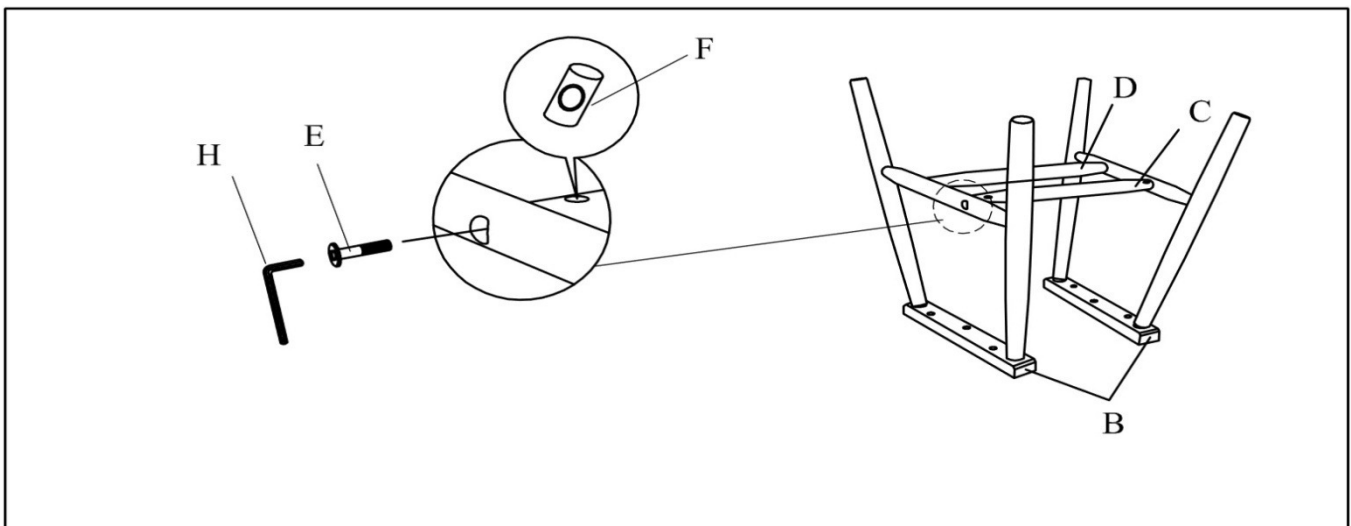
### Instructions For Installing Barrel Nut

Insert Barrel Nut with the perpendicular hole facing and in-line with the drill hole that the bolt is to be inserted.



Use a Flat-head Screwdriver to hold Barrel Nut in position before inserting bolt to thread into the Barrel Nut.

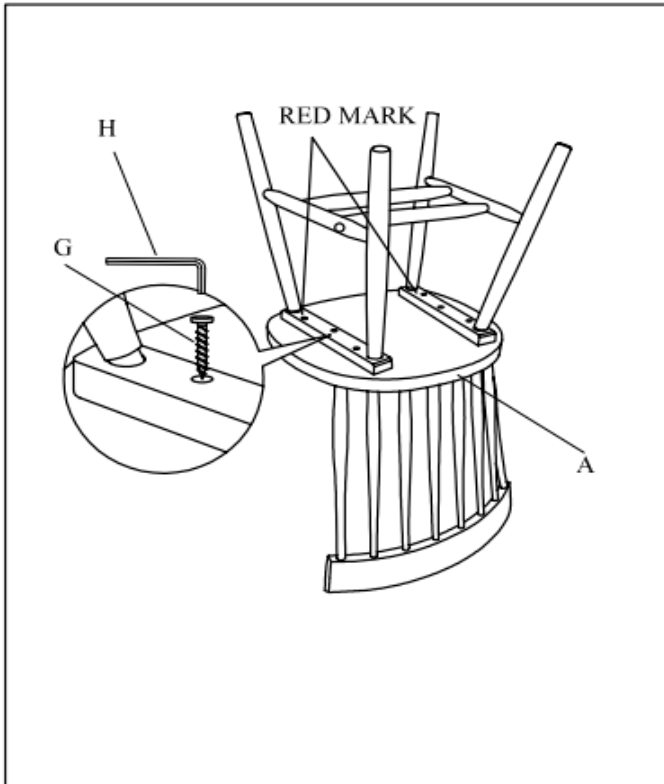
### STEP 1



- a) Attach Long Stretcher (D) to Leg Frames (B).
- b) Insert Barrel nut (F) into holes on Short Stretcher (C) and fasten (C) to (B) using JCBC Bolt (E). Use Allen Key (H) to drive (E) - do not tighten completely at this time.

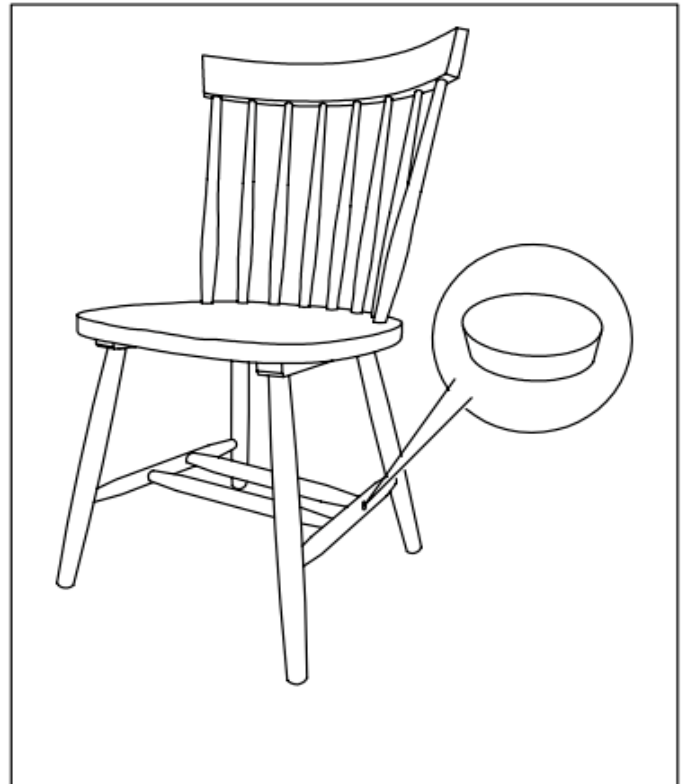
ASSEMBLY INSTRUCTIONS  
BLK/ESP/RED/WHT/MIN/GRY/WAL/GRN

STEP 2



- a) Position Chair Back (A) on an elevated surface (e.g. table top) with the bottom-side faced up.
- b) Position leg frame assembly from Step 1 to bottom of chair seat as shown. Ensure Red Mark on seat rail face front edge of seat and center leg assembly to seat bottom. Use Allen Key (H) to drive JCBC Screw (G) to fasten leg assembly to seat bottom.

STEP 3



- a) Tighten all of the JCBC Bolts & Screws - do not over-tighten.
- b) Cover the holes on leg frame by using WoodButton(I)

**Important: Check and re-tighten all of the hardware a few days after the product has been assembled and acclimated to its new environment.**