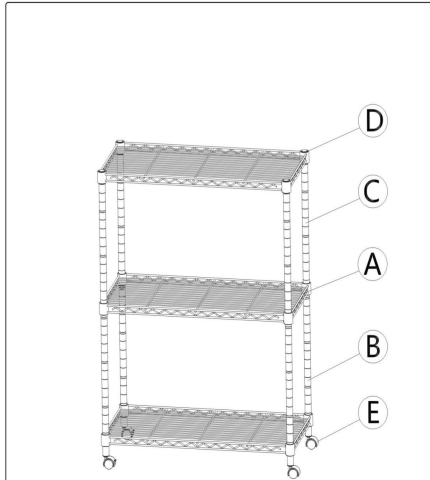


# KITCHEN CART INSTRUCTION

## Assembly Steps:



No.	A	B	C	D	E
Name	Wire Shelf	Lower Pole	Upper Pole	Plastic Clip	Nylon Caster
Parts					
Quantity	3PCS	4PCS	4PCS	24PCS	4PCS



1 Screw the Nylon Casters (E) into the bottom of each Lower Pole (B) in a clockwise direction and fasten it by wrench. Snap Plastic Clips (D) onto the pole grooves of four lower poles at the same position and make sure that the arrow of plastic clips are pointing up.

2 Please make sure that you have the Wire Shelf (A) the correct way up. Hold the wire shelf on its side and slide the top of each pole through the bottom of wire shelf at its corners until there is snug fit. After four poles have been slid through the wire shelf collar holes, set the shelf upright.

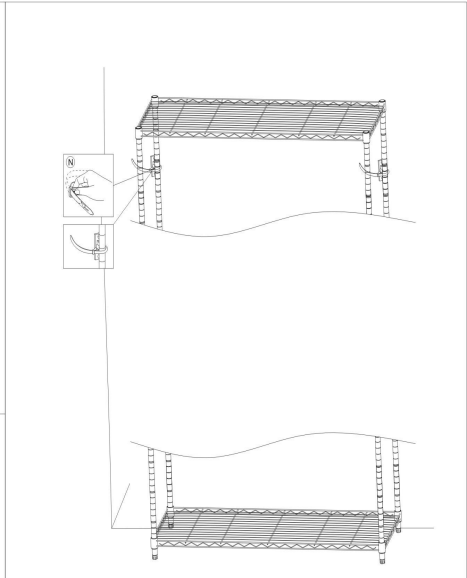
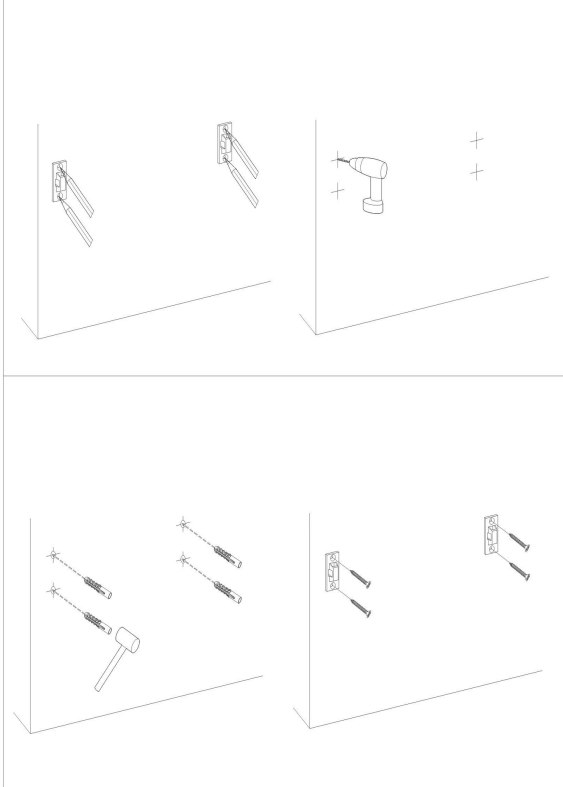
3 Snap plastic clips onto the same grooves of four poles at your desired position, slide down the wire shelf onto the plastic clips.

4 Screw Upper Poles (C) into lower poles by screw connectors which is already on the upper poles.

5 Repeat the step 3) to assemble the top Wire Shelf(A).

6 Once all the shelves have been installed, pushing firmly down on every shelf at corners by rubber mallet to ensure the shelf in a place over the plastic clips.

7 It's recommended to install the included anti-tip device for safety.



No.	N
Name	Anti-Tip Device
Parts	
Quantity	1SETS