



ITEM #: _____ QTY: _____
 MODEL #: _____
 PROJECT NAME: _____

121917

3601 S. Banker St. Effingham, IL 62401 • P.O. BOX 609 • Ph: (888) 431-2667 • Fax: (800) 433-2667



"SNS" MAPLE TOP WORK TABLES

1-3/4" THICK HARD ROCK MAPLE FLAT TOP W/ STAINLESS STEEL BASE & ADJUSTABLE UNDERSHELF

FEATURES:

- 1-3/4" THICK HARD MAPLE TOP, STYLE "SC" FLAT TOP
- MAPLE TOP W/ OIL FINISH W/ OPTIONAL VARNIQUE FINISH
- STAINLESS STEEL BASE AND UNDERSHELF
- UNDERSHELF IS ADJUSTABLE
- ADJUSTABLE BULLET FEET
- SHIPPED KNOCKED-DOWN, EASY-TO-ASSEMBLE
- ALL MODELS ARE NSF CERTIFIED

MATERIAL:

- TOP: NORTHERN HARD ROCK MAPLE
- LEGS: 1-5/8" ROUND O.D. 16 GAUGE TYPE 300 TUBULAR STAINLESS STEEL W/ #4 POLISH, SATIN FINISH
- SHELF: 18 GAUGE TYPE 300 TUBULAR STAINLESS STEEL W/#4 POLISH, SATIN FINISH
- GUSSETS: STAINLESS STEEL
- FEET: 1" ADJUSTABLE STAINLESS STEEL

OPTIONAL ACCESSORIES

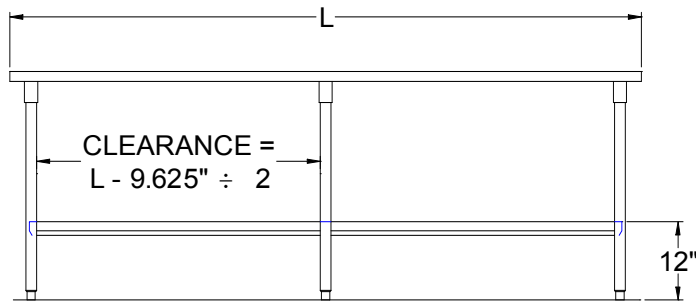
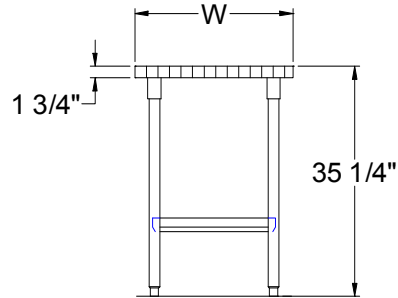
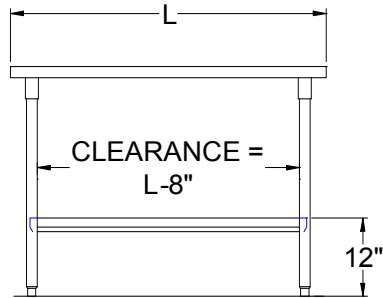
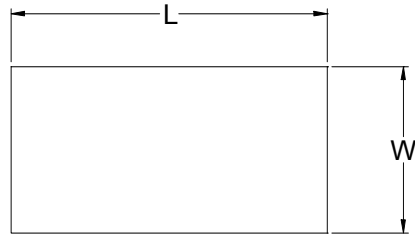
| DESCRIPTION | MODEL | QTY |
|----------------------|-------|-----|
| STAINLESS STEEL FEET | | |
| DRAWER | | |
| DRAWER LOCK | | |
| ADJUSTABLE SHELF | | |
| CASTERS | | |
| OVERSHELVES | | |
| POT RACK | | |



MAPLE TOP WORK TABLES

| 24" WIDE | QTY | 30" WIDE | QTY | 36" WIDE | QTY |
|----------|-----|----------|-----|----------|-----|
| SNS01 | | SNS07 | | SNS13 | |
| SNS02 | | SNS08 | | SNS14 | |
| SNS03 | | SNS09 | | SNS15 | |
| SNS04 | | SNS10 | | SNS16 | |
| SNS04A | | SNS10A | | SNS16A | |
| SNS05 | | SNS11 | | SNS17 | |
| SNS05A | | SNS11A | | SNS17A | |
| SNS06 | | SNS12 | | SNS18 | |

DETAILED SPECIFICATIONS



- UNITS 7 FT. AND LARGER ARE FURNISHED WITH SIX LEGS.
- FINISHED SIZE OF UNDERSHELF.
 SHELF LENGTH = LENGTH MINUS 4.875"
 SHELF WIDTH = WIDTH MINUS 4.25".

MAPLE TOP WORK TABLES

| LENGTH | 24" WIDE | WT. (LBS) | 30" WIDE | WT. (LBS) | 36" WIDE | WT. (LBS) |
|--------|----------|-----------|----------|-----------|----------|-----------|
| 36" | SNS01 | 77 | SNS07 | 90 | SNS13 | 102 |
| 48" | SNS02 | 95 | SNS08 | 116 | SNS14 | 132 |
| 60" | SNS03 | 114 | SNS09 | 140 | SNS15 | 159 |
| 72" | SNS04 | 138 | SNS10 | 164 | SNS16 | 187 |
| 84" | SNS04A | 162 | SNS10A | 198 | SNS16A | 225 |
| 96" | SNS05 | 186 | SNS11 | 223 | SNS17 | 254 |
| 108" | SNS05A | 200 | SNS11A | 244 | SNS17A | 278 |
| 120" | SNS06 | 220 | SNS12 | 268 | SNS18 | 306 |

SOME UNITS SHIP UNASSEMBLED FOR REDUCED SHIPPING COST. ALL DIMENSIONS ARE TYPICAL. TOLERANCE +/- .500"
 John Boos & Co. is constantly engaged in a program of improving products and therefore reserves the right to change specifications without prior notice.

