


**SPECIFICATIONS**

**Features/Benefits**

- Diverter on Tub Spout (D501062TC/D502062TC Only)
- Requires Gerber Treysta<sup>®</sup> Rough-In, G00GS50 Series (Horizontal Inputs) or G00GS52 Series (Vertical Inputs), Sold Separately
- Includes Treysta<sup>®</sup> Ceramic Disc Pressure Balance Cartridge
- Includes Mono Chic<sup>®</sup> 5" x 8" Single Function Showerhead, D460066 (1.75 gpm) or D460059 (2.0 gpm)
- 1.75 gpm (6.6 L/min) Max Flow @ 80 psi (D501062TC/D501562TC)
- 2.0 gpm (7.6 L/min) Max Flow @ 80 psi (D502062TC/D502562TC)
- 12 1/2" Metal Shower Arm, D481162
- 7 1/2" Tub Spout, DA606445 (D501062TC/D502062TC Only)
- Finish-Matched Deep Wall Kit, D113001, Sold Separately
- Finish-Matched Shallow Wall Kit, GA663B11, Sold Separately



**Available Color/Finishes**

Color	Description
	Chrome

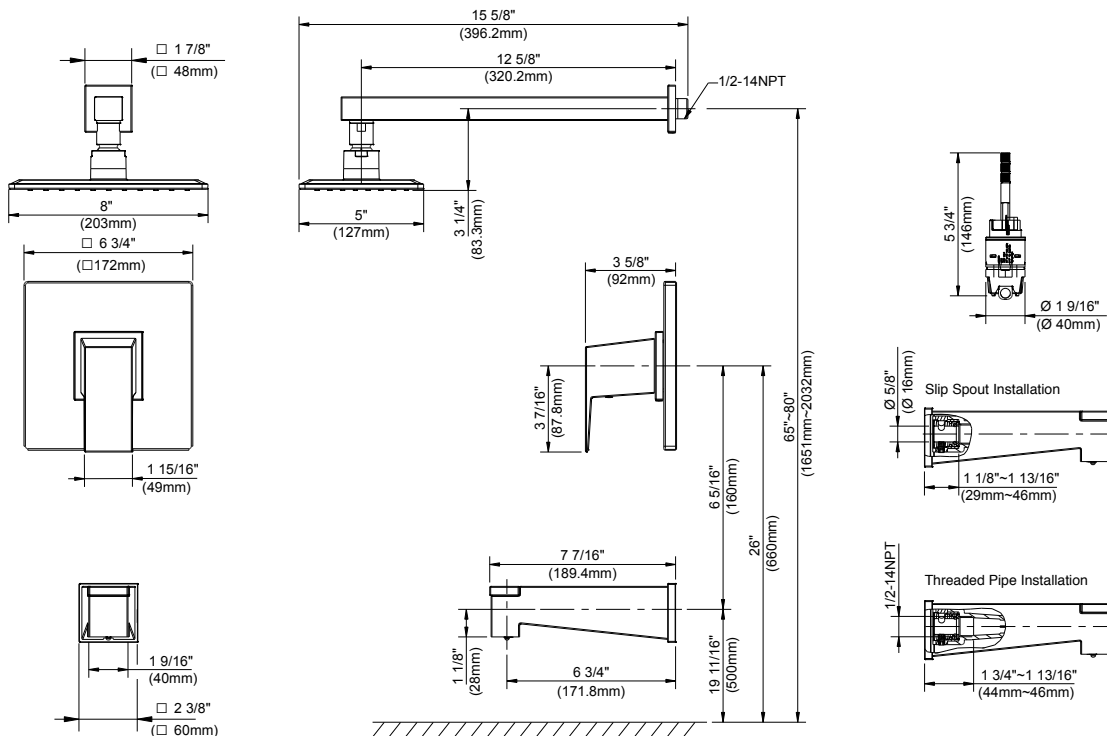
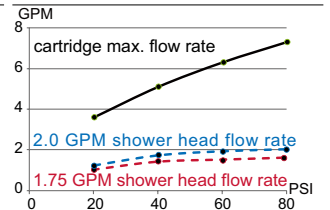
Please see danze.com or current price list for available finishes.  
Finish is defined by additional suffix.

**Standards & Certifications**



(Lever Handle)

**Flow Rate**



**Submittal Information:**

Name: \_\_\_\_\_ Contractor: \_\_\_\_\_  
 Location: \_\_\_\_\_ Contact #: \_\_\_\_\_