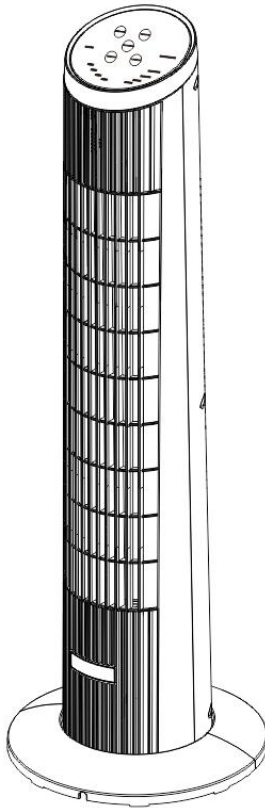


ELECTRONIC CONTROL TOWER FAN

OWNER'S MANUAL

Model No. JTF-15-R



PLEASE READ AND SAVE THESE INSTRUCTIONS

This fan is for residential use only. It is not intended to be used in
commercial or industrial settings

Thank you for using this product, with proper care, this product will provide years of service. Carefully follow the instructions in order to ensure that this product functions safely and properly for years to come.

PLEASE SAVE THESE INSTRUCTIONS

Returning Policy

If the item needs to be returned, please contact our Customer Service Team.

We will provide a prepaid returning label. Email: eleappliance-service@outlook.com

NOTE: We are not responsible for any costs incurred if the buyer returns the item themselves.

SAFETY INFORMATION

READ AND SAVE THESE IMPORTANT SAFETY

INSTRUCTIONS BEFORE USING THIS FAN.



WARNING!



When using electrical appliances, basic safety pre-cautions should always be followed, including the following:

WARNING:

1. To reduce the risk of fire or electrical shock, do not use this product with any solid-state speed control device . To reduce the risk of fire or electric shock and injury to anyone , do not use in a window.
- 2.This product employs overload protection (blown fuse) which could indicate an overload situation. If the fuse blows, unplug the product from the outlet . Replace the fuse as per the user servicing instructions (follow marking for proper fuse rating) and check the product . If the replaced fuse blows, a short-circuit may be present and the product should be discarded or returned to an authorized service facility for examination and/or repair.
- 3.USE this fan only as described in this manual . Other uses are not recommended as it may cause fire or electric shock.
- 4.To protect against electrical shock, do not place fan in window ,plug or cord in water. or spray with liquids .
- 5.Unplug the fan from the outlet when not in use, when moving fan from one location to another and before cleaning.
- 6.Do not operate the fan in the presence of explosive and/or flammable fumes.
7. Avoid contact with moving fan parts.
- 8.To disconnect , grip the plug and pull it from the wall outlet .Never yank the cord . Always use on a dry surface.
- 9.Do not operate any fan with a damaged cord or plug. discard fan or return to an authorized service facility for examination and/or repair.
10. Arrange cord away from traffic area and where it will not be tripped over.
- 11.The appliance is not to be used by children or persons with reduced physical, sensory or mental capabilities , or lack of experience and knowledge, unless they have been given supervision or instruction.
- 12.Close supervision is necessary when any appliance is used by or near children . Children should not play with the appliance.
- 13.If the power cord is damaged, it is strongly recommended to request a specialist to handle.
- 14.Do not leave the fan running unattended.

SAVE THESE INSTRUCTIONS

USER SERVICING INSTRUCTIONS

Grasp plug and remove from the receptacle or other outlet device. Do not unplug by pulling on cord.

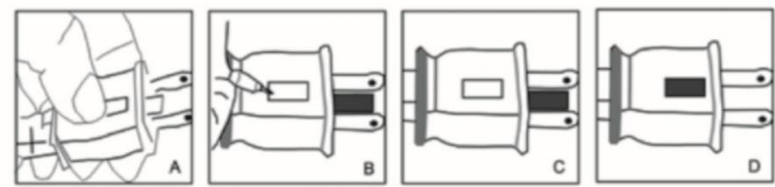
(A)Open fuse which is covered by sliding access cover on top of attachment plug toward blades.

(B)Remove fuse carefully by gently pulling out the ends of the fuse from the receptacle. Replace fuse only with 5 amp, 125 volt fuse.

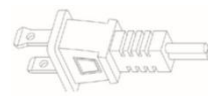
(C)Install replacement fuse by first placing the end of the fuse receptacle which is opposite of the blades of the plug, then carefully push in the other end.

Only push against the metal end of the fuse, not the glass centre portion.

(D)Close fuse cover by sliding the cover back into the plug until it is completely closed and latches.



To prevent risk of fire, do not replace attachment plug. Contains a safety device (fuse)that should not be removed. Discard product if the attachment plug is damaged.

	<p>THIS PRODUCT IS EQUIPPED WITH A POLARIZED PLUG (a plug having one blade wider than the other). To reduce the risk of electric shock, this plug is intended to fit in a polarized outlet only one way. If the plug does not fit fully in the outlet, reverse the plug. If it still does not fit, contact a qualified electrician. DO NOT OVERRIDE THE SAFETY PURPOSE OF THIS POLARIZED PLUG</p>
---	---

IN THE BOX

- FAN
- BASE
- INSTRUCTION MANUAL
- REMOTE CONTROL

PREPARATION

Before beginning installation of product , make sure all parts are present.

compare parts with package content list and hard ware contents list. If any part is missing or damaged , do not attempt to assemble, install or operate the product.

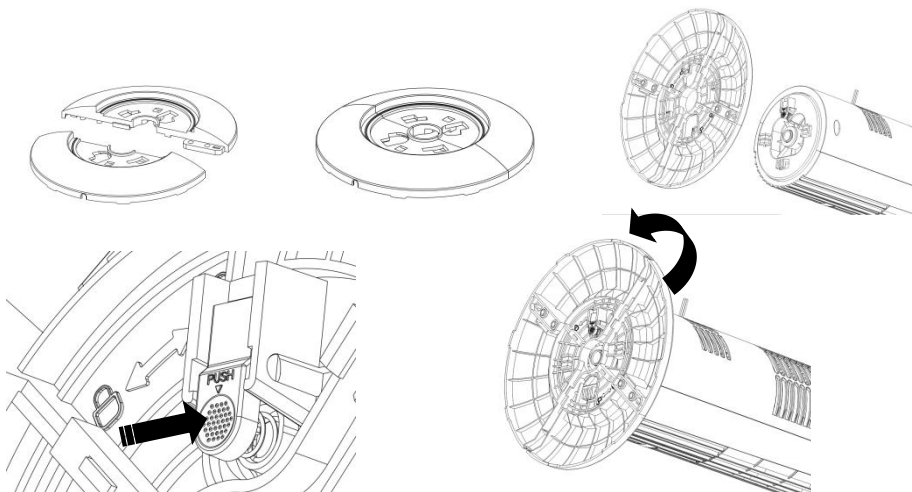
Assembly instructions

1.Assemble the left and right bases together.

Attention: When assembling, let the power cord pass through the hole in the base.

2.Align the card slot, press the lock block, and rotate counterclockwise by about 30°to lock the bottom plate and the body.

3.After installation,place the product on a stable and level surface.



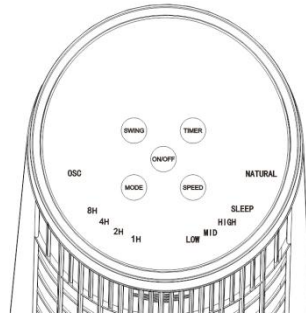
OPERATION INSTRUCTIONS

Intended Use:

This product is intended for indoor residential and office use only, not for industrial or other commercial applications, Use only with electrical wiring that is in good working order and that meets applicable codes and regulations. If you have any questions about whether your wiring is adequate, consult a qualified electrician.

Operation:

Buttons



On/off button: press the on/off button to switch the fan on or off.

Speed button: press the button to change the speed between low-> medium-> high. Default speed is low speed.

Mode button: press the button to change fan mode between normal mode -natural mode-> sleep mode Sleep mode: lowers speed every 30 minutes and then stays at the lowest speed. Natural mode: the speed changes randomly

Swing button: press the button to activate or deactivate swinging/oscillation. The fan moves slowly from left to right and back again. Oscillation works in all fan modes.

Timer button: Press this key set timer , step 1 hours ,max 15 hours.

VOICE TOWER FAN COMMAND LANGUAGE

Operate		Device response
Power on		Welcome to use the smart tower fan
Press and hold the MODE button for 3 seconds to turn on/off voice recognition .		The buzzer beeped once
15 S no operation automatic exit wake-up		Goodbye
	Term instruction	Fan response
Wake-up word	Hello coocaa	I am Here
Indicator word	Turn on the fan	Already turned on
	Turn off the fan	Goodbye
	Minimum speed / low speed	Low speed
	Medium speed / Middle speed	Middle speed
	Max speed / High speed	High speed
	Oscillation on	Oscillation on
	Oscillation off	Oscillation off
	Shutdown after one hour	One hour
	Shutdown after two hours	Two hours
	Shutdown after three hours	Three hours
	Shutdown after four hours	Four hours
	Shutdown after five hours	Five hours
	Shutdown after six hours	Six hours
	Shutdown after seven hours	Seven hours
	Shutdown after eight hours	Eight hours
	Shutdown after nine hours	Nine hours
	Shutdown after ten hours	Ten hours
	Shutdown after eleven hours	Eleven hours
	Shutdown after twelve hours	Twelve hours
	Shutdown after thirteen hours	Thirteen hours
	Shutdown after fourteen hours	Fourteen hours
	Shutdown after fifteen hours	Fifteen hours
	Normal mode	Normal mode
	Natural mode	Natural mode
	Sleep mode	Sleep mode
	Maximum volume	Maximum volume
	Minimum volume	Minimum volume

Battery

Before first use: Pull the protective film to remove it. The remote control is now ready for use.

To replace the battery: open the battery compartment on the back of the remote control and replace the used battery with a new one. Battery type:CR2025

MAINTENANCE

- 1.Be sure to unplug the power cord from the outlet before cleaning.
- 2.Plastic parts should be cleaned with mild soap and a damp cloth or sponge. Do not submerge the unit in water to clean it . Thoroughly remove soap with clean water
3. Be sure not to get water or other liquid inside the fan motor.
- 4.Dry all parts completely before reassembling and reconnecting to a power source.

STORAGE

Store the fan in a cool, dry location when not in use .To prevent dust and dirt build-up, use the original packaging to repack the unit.