

# Hexagon Lift Top Cocktail Table w/Casters 36" x36" x18"

Your furniture purchase is an investment. Here are a few tips to maximize the lifetime of your furniture with a minimal amount of effort. Properly caring for your furniture can help ensure that it looks great year after year.

## Wood Furniture Maintenance:

- Always dust, wipe, and clean with the grain of the wood.
- Dust with a soft cloth. Dust will scratch the furniture surface if not removed properly.
- If a polished surface becomes cloudy, rub it with a cloth dipped in a solution of one tablespoon vinegar to one quart of water. Rub softly with the grain until the surface is completely dry.
- Soap and water are not advisable for wood surfaces. Water can penetrate the finish and raise the grain on wood, causing damage.
- Remember to change dusting cloths frequently as dirty cloths may scratch your furniture's surface.

## The Enemies of Wood:

- Moisture is wood's worst enemy. Liquid spills should be gently wiped up immediately. Coasters should be used under all beverages.
- Do not allow rubber or vinyl materials to lie on the furniture. Chemicals in rubber may leave a stain. Put a strip of felt or leather under accessories that have rubber or vinyl.
- Heat creates a chemical change in the furniture's finish, which may result in a white spot. Use protective pads under hot dishes, appliances, etc.
- Sunlight's ultraviolet rays can damage the finish of furniture. Do not place furniture directly against a heater or radiator and do not place in the path of hot streams of air from central heating. This will cause extreme localized drying of the wood.

## Marble Top Maintenance:

The surface of the marble on your table has been polished and sealed to create a generally non-porous surface. The stone has many natural characteristics including veining, hairline cracks, and color variations, which make up the stone's beauty.

To maintain the beauty of your marble:

- Protect surfaces from scratching, staining and etching by:
  - Keeping them free of debris or sharp objects.
  - Wiping up spills immediately
  - Avoiding contact with chemicals (particularly acid-based materials)
- Clean with PH neutral products or those especially formulated for use on stone.
- It is not recommended to use a water-based solvent for dark marble as it will remove the polish from the surface.

## Caring for the Fabric on Upholstered Furniture:

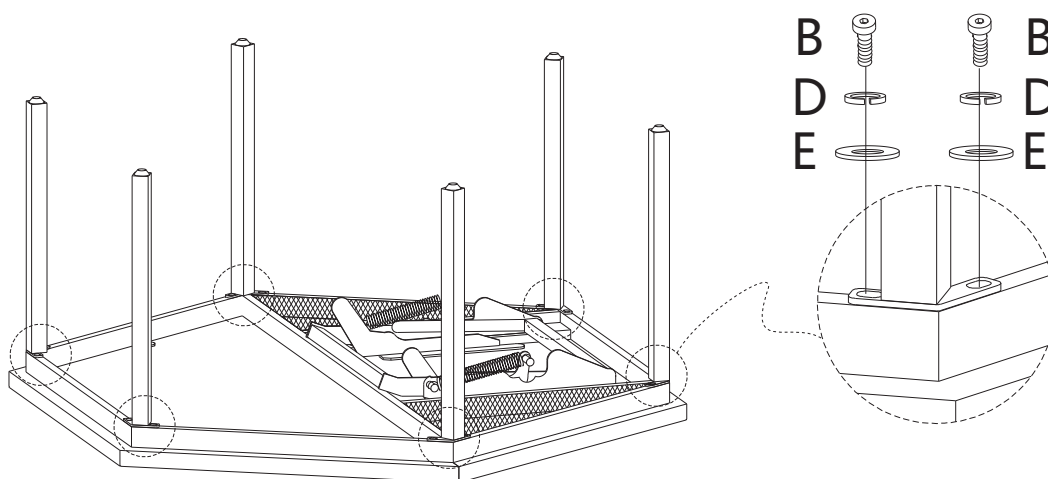
- Frequent vacuuming of the entire upholstered area will prevent dust from settling into the fibers.
- Professional cleaning is always recommended for all upholstered pieces.
- Do not use cleaning products containing brightening agents.



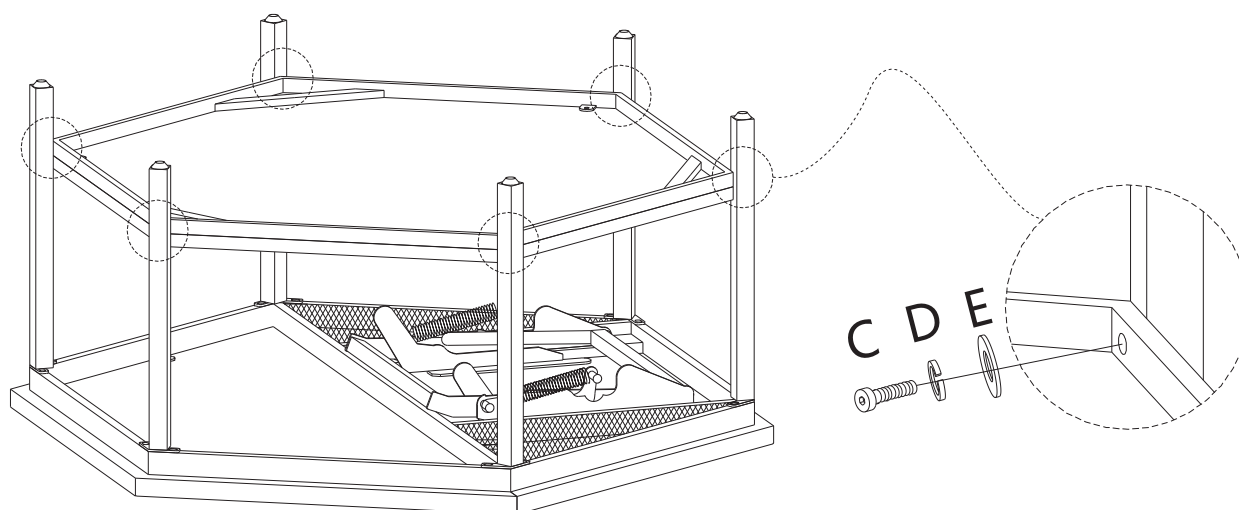
# Assembly Instructions

\* Do not tighten screws & bolts until the entire item is completely assembled.

## Step1



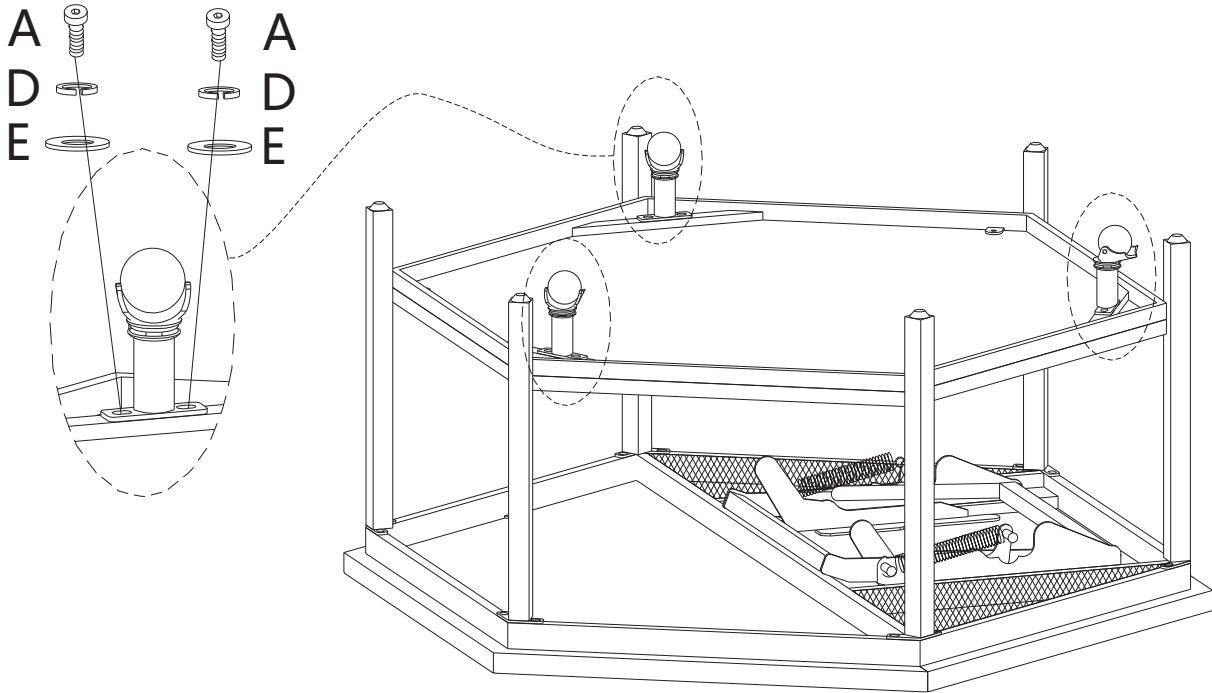
## Step2



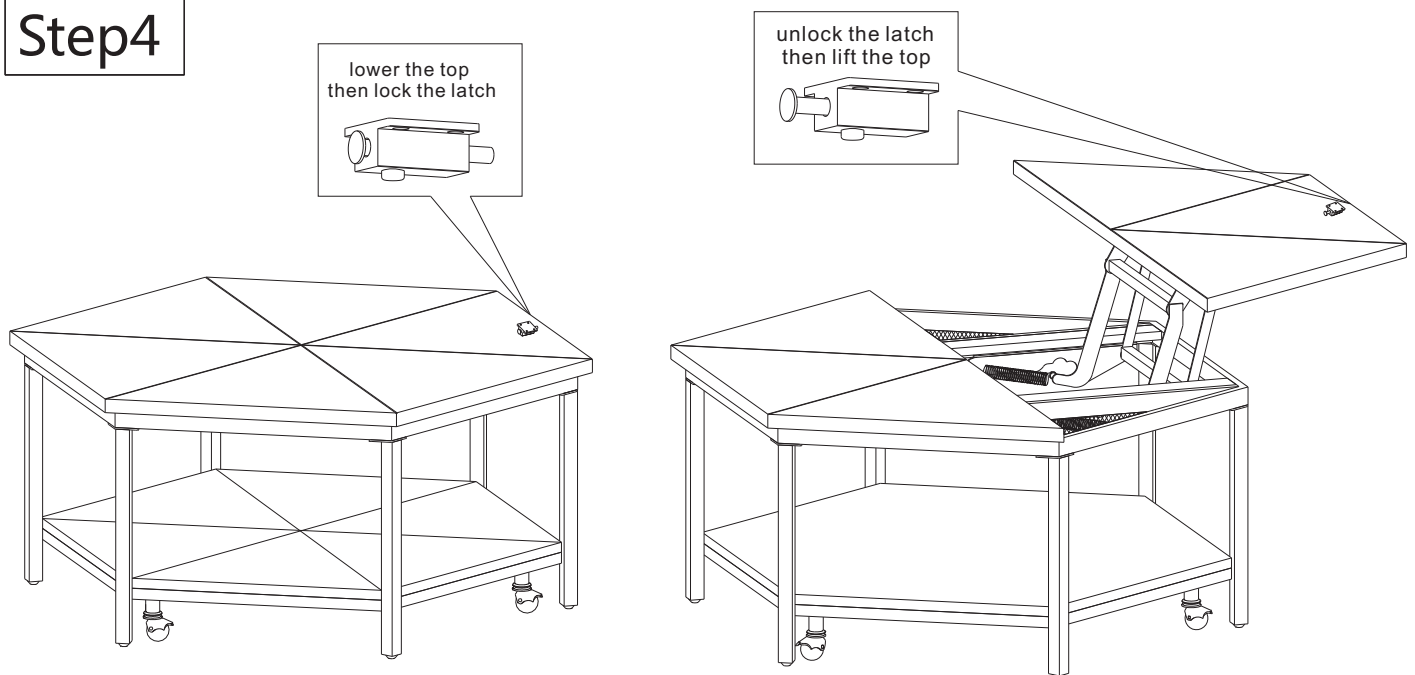
# Assembly Instructions

\* Do not tighten screws & bolts until the entire item is completely assembled.

## Step3



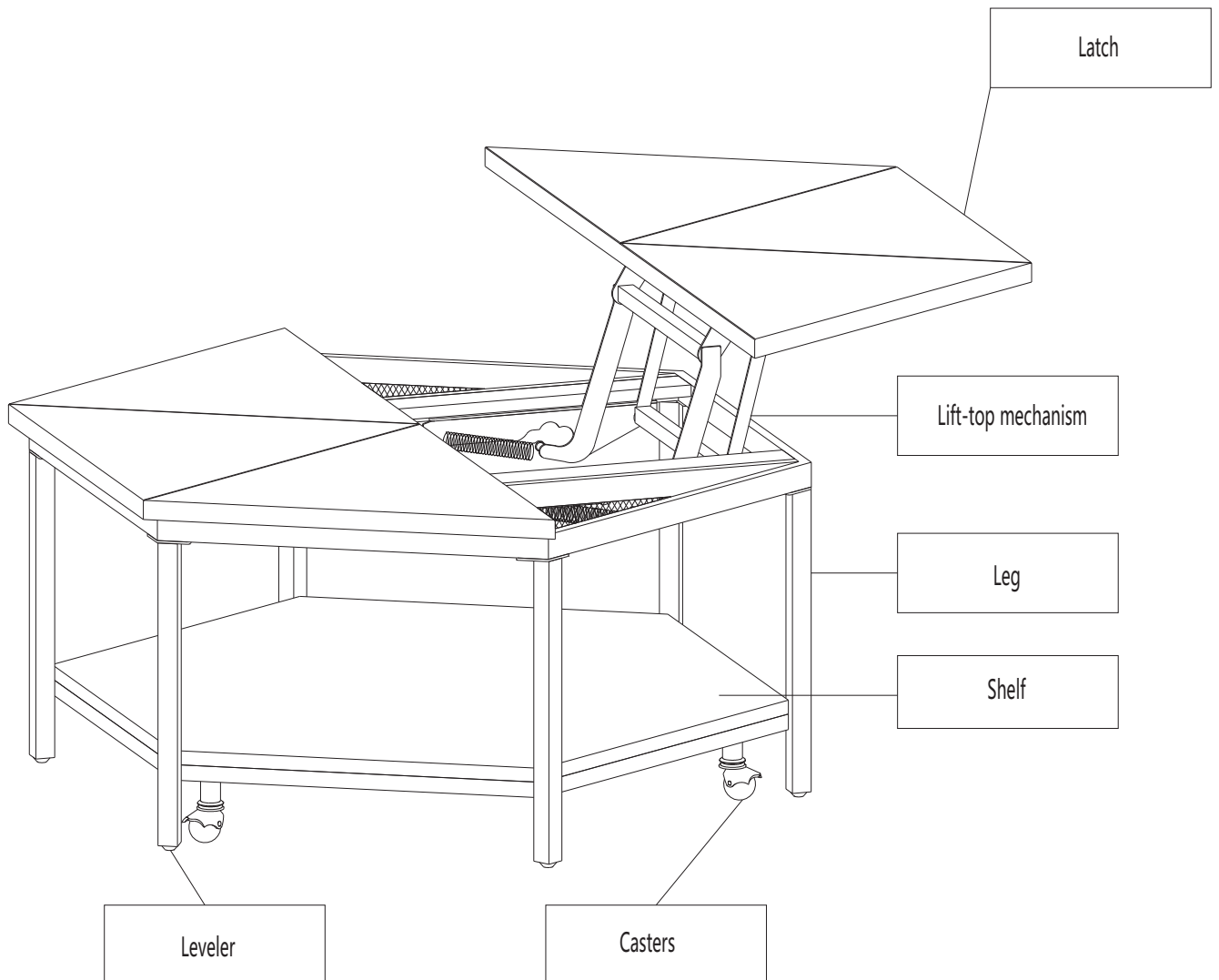
## Step4



## Hardware Pack

A		6PCS	1/4" x12
B		12PCS	1/4" x15
C		6PCS	1/4" x30
D		24PCS	Φ6.5mm
E		24PCS	Φ13x1.5
F		1PC	4mm

# Complete Hardware



PRODUCT DETAILS	
TOP & SHELF	MDF & PINE VENEER
LEG PANEL&FRAME	IRON
CASTER	IRON & PLASTIC
COLOR OF IRON	LIGHT BROWN
PRODUCT SIZE	36"*36"*18"
CARTON SIZE	45 1/4"*40 1/4 " *8 3/4"
NET WEIGHT	71.5LBS
GROSS WEIGHT	82.7LBS
CU.FT.	9.22'

MADE IN CHINA