

# Installation instructions

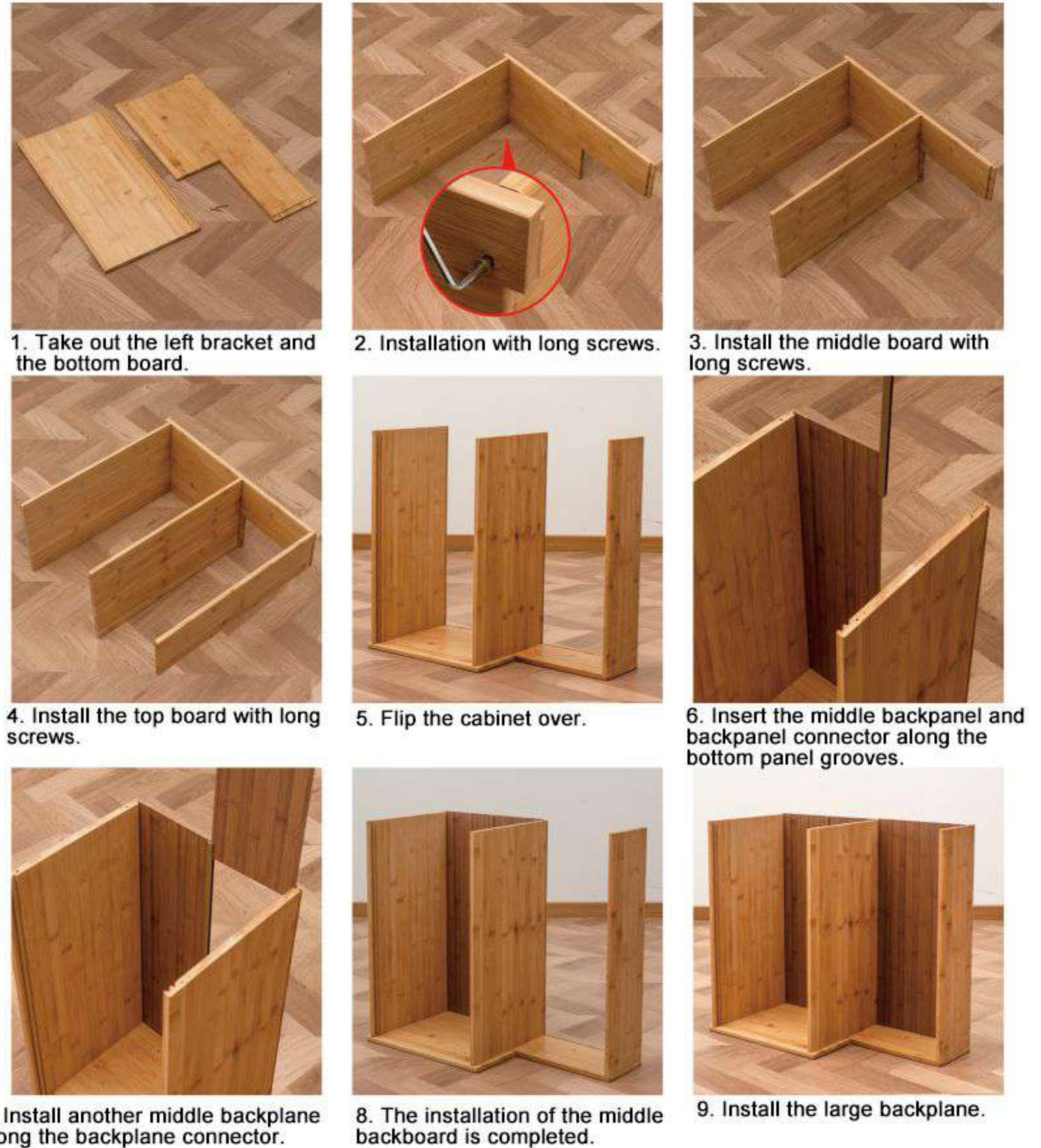
## Accessory List:



## Accessory mounting method:



## Installation steps:





10. Place the baffle plate into the cabinet. Note: No installation required temporarily)



11. Insert the door panel into the groove between the bottom and middle board (note the orientation of the door panel)



12. Insert the other door panel note the orientation of the door panel)



13. Door panel installation is complete.



14. Install the left bracket with a long screw.



15. Turn the cabinet over to positive and insert the plug in turn.



19. Installation is complete.



16. Place the baffle plate from step 10 on the plugs.



17. The baffle plate are placed as shown.



18. Baffle plate installation is complete.