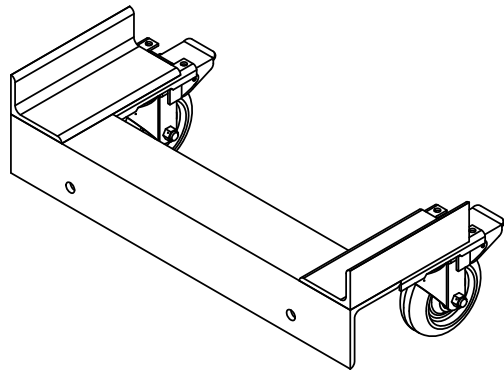


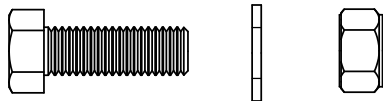
CYL-P-CKIT CASTER KIT

KIT SHOULD INCLUDE:

(2) - SWIVEL CASTER ASSEMBLIES

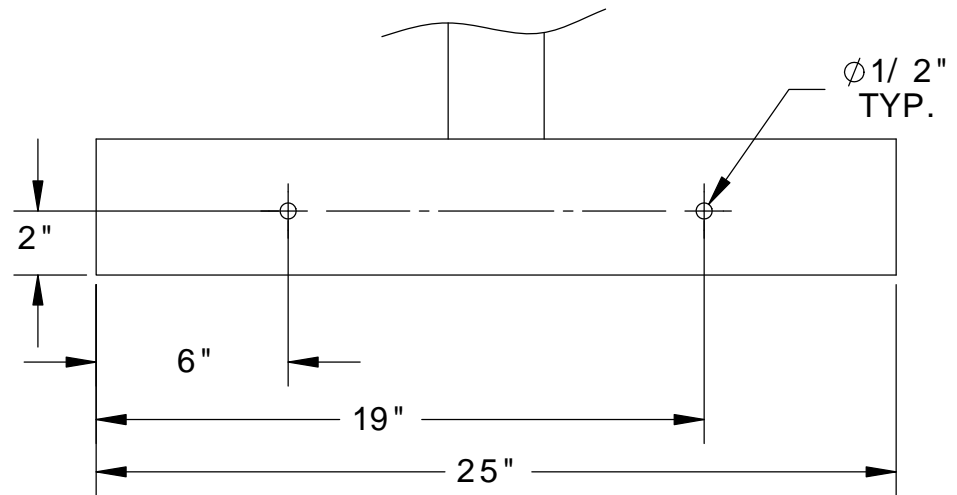


(4) - 1/2-13 UNC x 1 1/2 LG HEX HEAD BOLT, WASHER, & LOCK NUT (FOR USE ON SWIVEL ASSEMBLY)



INSTRUCTIONS:

1. DRILL HOLES IN THE LOCATIONS SHOWN BELOW IN THE CYLINDER CADDY BASE PAN. (NOTE: HOLES NEEDED ON BOTH SIDES OF THE UNIT)
2. MOUNT SWIVEL CASTER ASSEMBLY ON ENDS OF UNIT



PROPRIETARY AND CONFIDENTIAL
THE INFORMATION CONTAINED IN THIS DRAWING IS THE SOLE PROPERTY OF VESTIL MANUFACTURING CO. ANY REPRODUCTION IN PART OR AS A WHOLE WITHOUT THE WRITTEN PERMISSION OF VESTIL MANUFACTURING CO. IS PROHIBITED.

UNLESS OTHERWISE SPECIFIED:

REMOVE ALL BURRS AND SHARP EDGES

DIMENSIONS ARE IN INCHES

CONCENTRIC	.006 TIR	.060 TIR
ANGLES	± 0° 30'	± 1° 0'
	x.xxx ± .005	
	x.xx ± .010	
DECIMALS	x.x ± .025	± .015
FRACTIONS	± 1/32	± 1/16
TOLERANCES	MACHINE	WELDMENT

COMMENTS:

DO NOT SCALE DRAWING

Vestil Manufacturing Co.

DESCRIPTION:

INSTRUCTIONS, CYL-P-CKIT

DRAWN BY: K. YOUNG	DATE: 9/12/05	SCALE: 1:6	SIZE A
CHECKED BY: -	DATE: -	SHEET 1 OF 1	REV
MATERIAL	DWG. NO. 33-126-007		