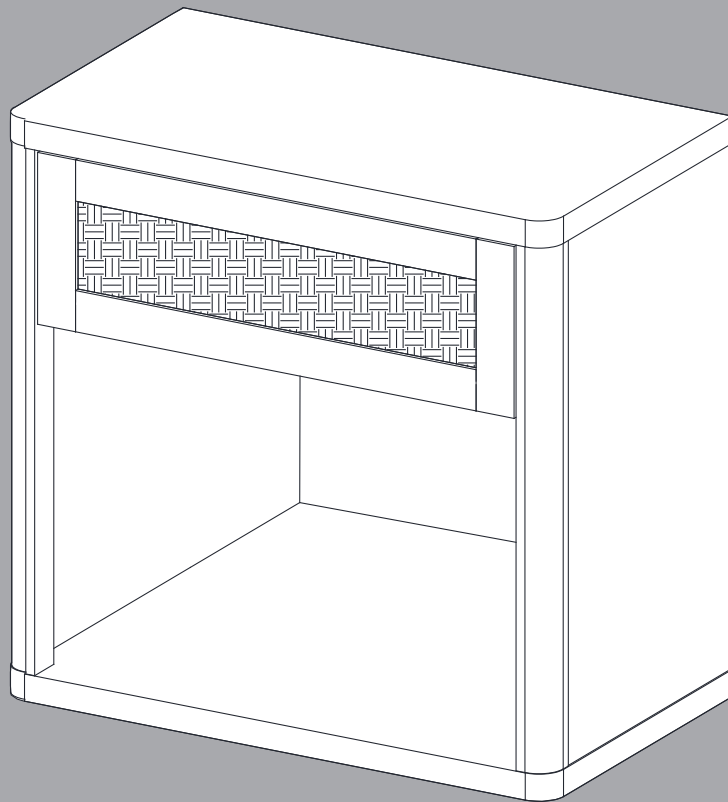


SICOTAS

ND129A1XLTY1693 | ND129A1XBNY1694 | ND129A2XLTY1696 | ND129A2XBNY1697



Zura Collection

Assembly Instructions

Before beginning the assembly process, please read and save these instructions for reference. Following these guidelines will ensure a smooth and successful assembly of your product.

1. Part Identification:

Carefully separate and identify all the parts included in your package. Confirm that you have all the components listed in the instruction manual. This step will help you avoid any missing or misplaced parts during assembly.

2. Work Surface:

To prevent any scratches or damage to the product, assemble it on a soft mat or a similar protective surface. This will provide a cushioned area for the components and protect the surfaces from unwanted marks.

3. Step-by-Step Assembly:

Follow the assembly instructions provided, proceeding one step at a time. Take care to understand each step properly before proceeding to the next one. This sequential approach ensures that the assembly is done correctly and minimizes the chance of errors.

4. Proper Screw Seating:

When attaching screws and nuts, it is essential not to fully tighten them until all screws are correctly seated. By partially tightening each screw and nut initially, you can ensure that they are aligned properly and fit securely before final tightening.

5. Avoid Over-Tightening:

While each screw and nut should be tightened correctly, it is crucial not to over-tighten them. Over-tightening can cause damage to the product or compromise its structural integrity. Use the appropriate amount of force to secure the components without excessive tightening.

SICOTAS customer help center:

If you encounter any questions or problems during the assembly process, please do not hesitate to contact us.

We strive to provide excellent customer support and will respond to your inquiries within 24 hours. Our team will offer you a suitable solution to address any concerns you may have.



Email:
service@sicotas.com



Website:
www.sicotas.com



Phone:
(833) 742-6827



Official Website:



WhatsApp:



YouTube:



Instagram:

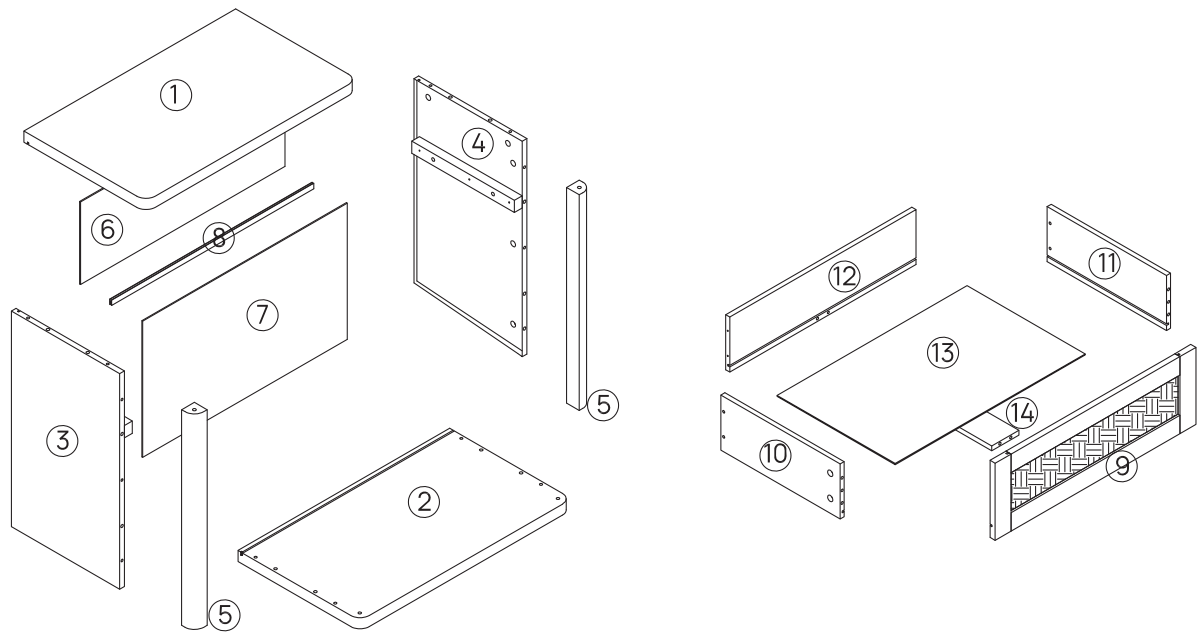


Facebook:

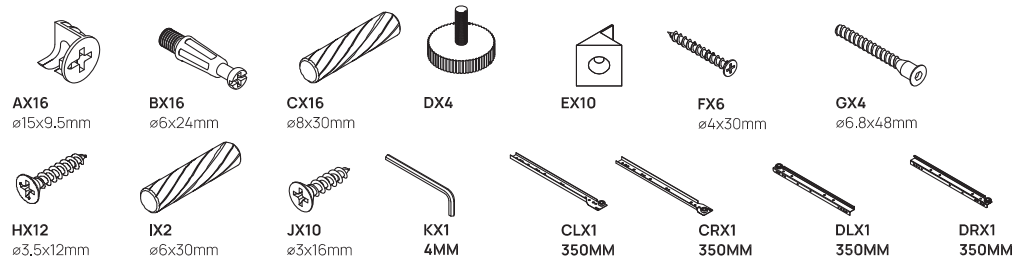


TikTok:

Parts List



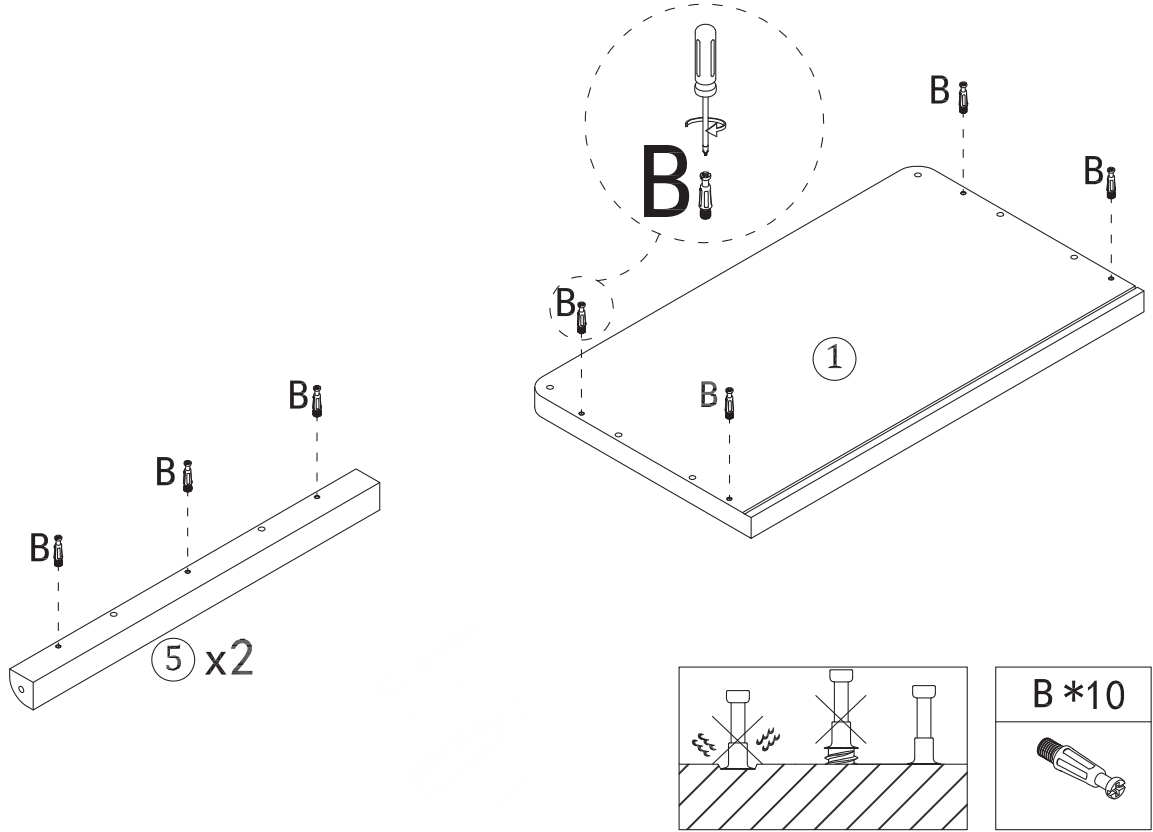
Hardware List



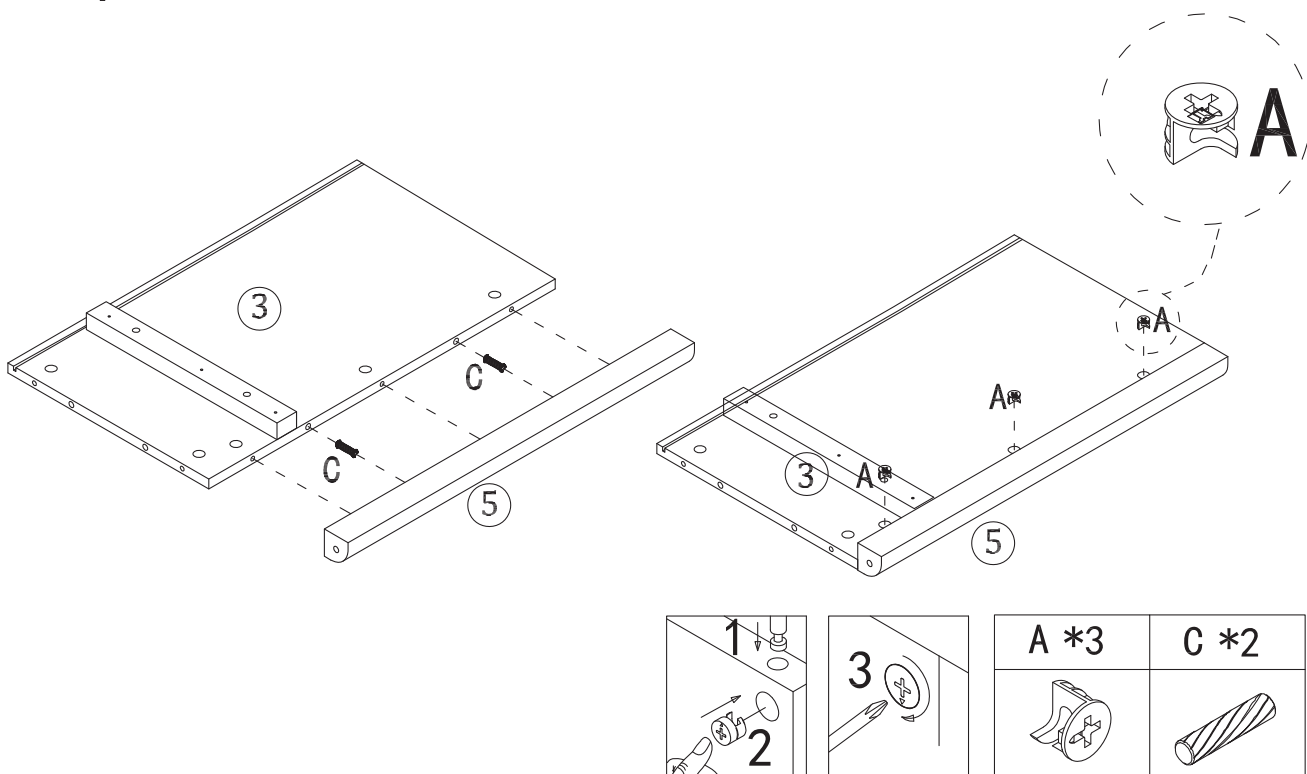
Code	Description	Quantity
A	ø15x9.5mm Cam lock	16+2
B	ø6x24mm Cam bolt	16+2
C	ø8x30mm Wood dowel	16+2
D	Foot pad	4+1
E	Backboard clip	10+2
F	ø4x30mm Screw	6+2
G	ø6.8x48mm Screw	4+1
H	ø3.5x12mm Screw	12+2
I	ø6x30mm Wood dowel	2+2
J	ø3x16mm Screw	10+2
K	4MM Hex key	1

Code	Description	Quantity
L	Drawer runnerset	1

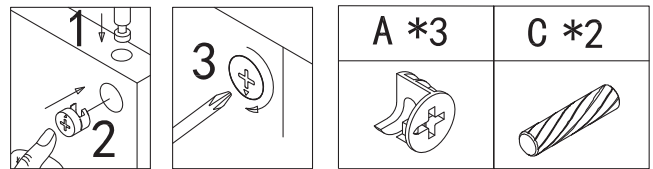
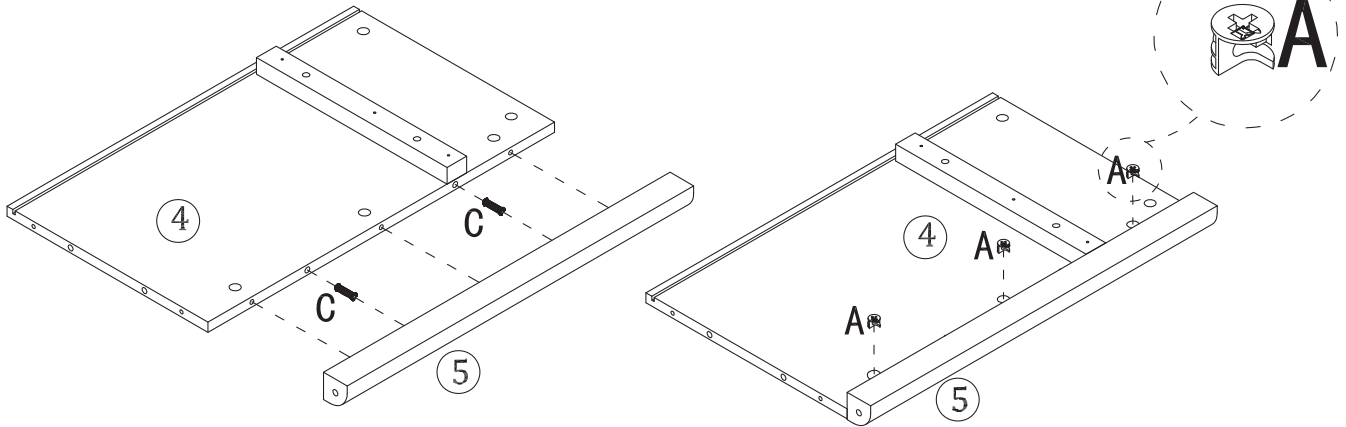
Step 1



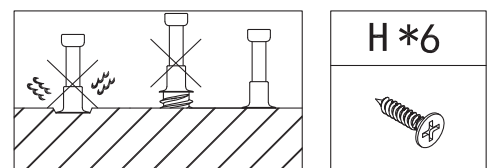
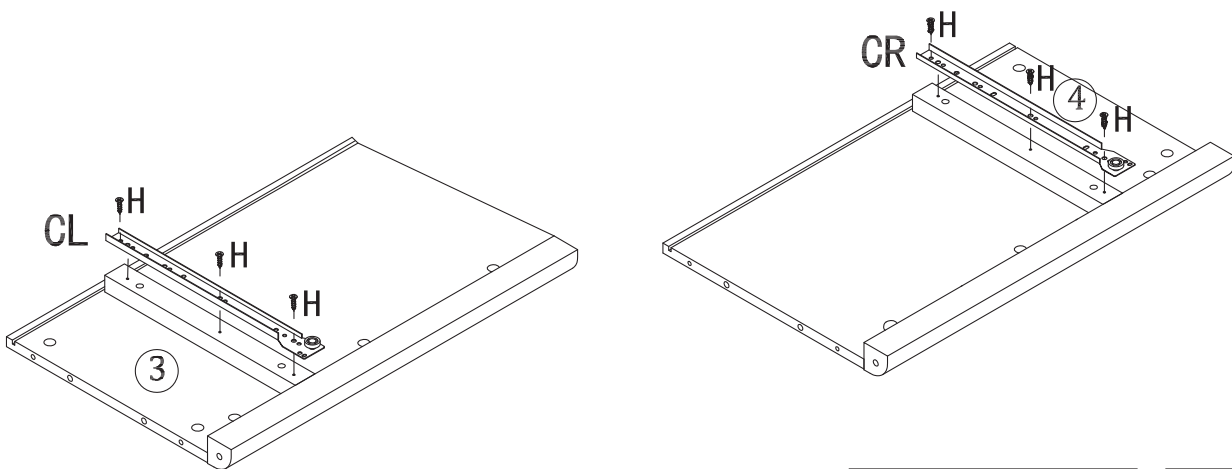
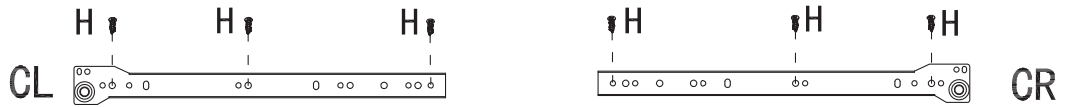
Step 2



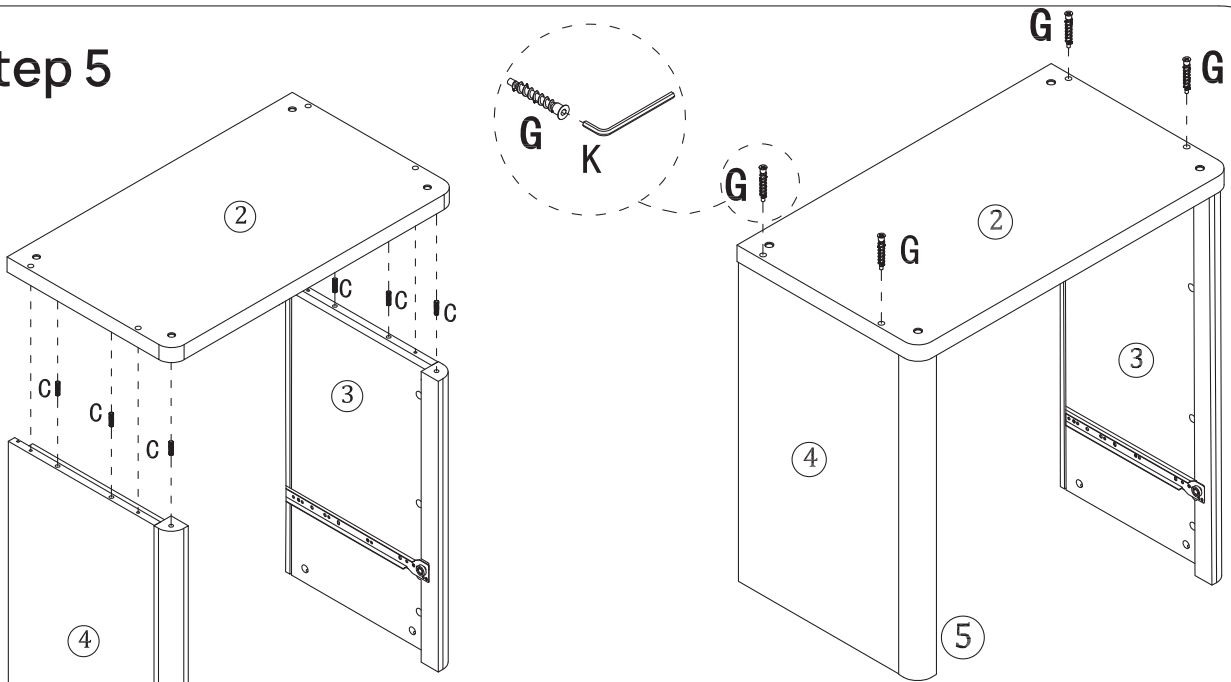
Step 3






Step 4

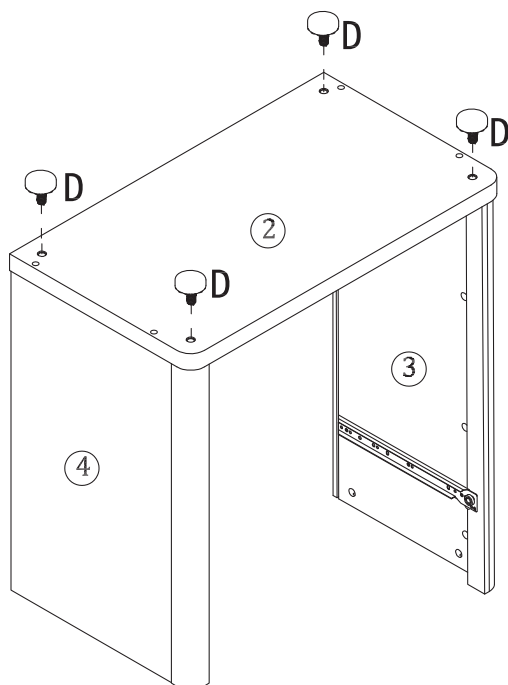



Step 5



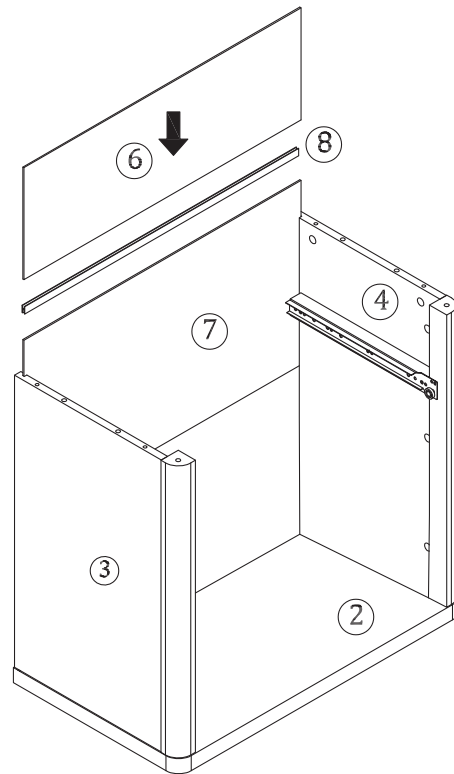
K *1	G *4	C *6
		

Step 6

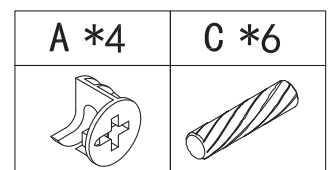
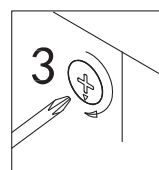
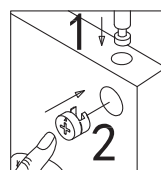
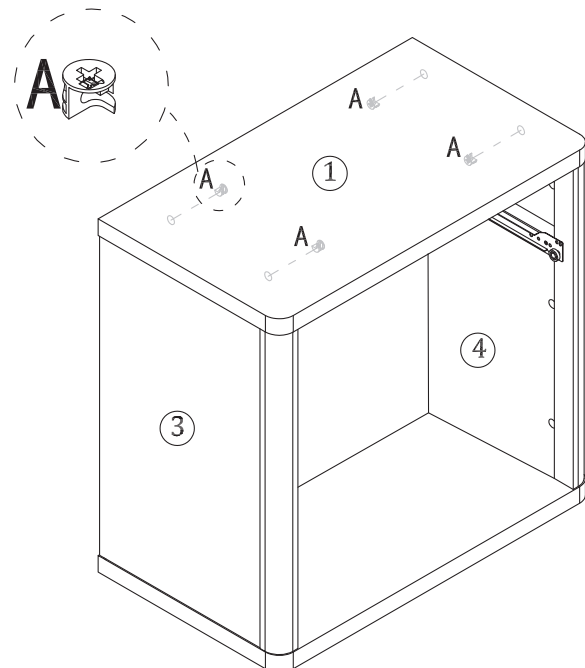
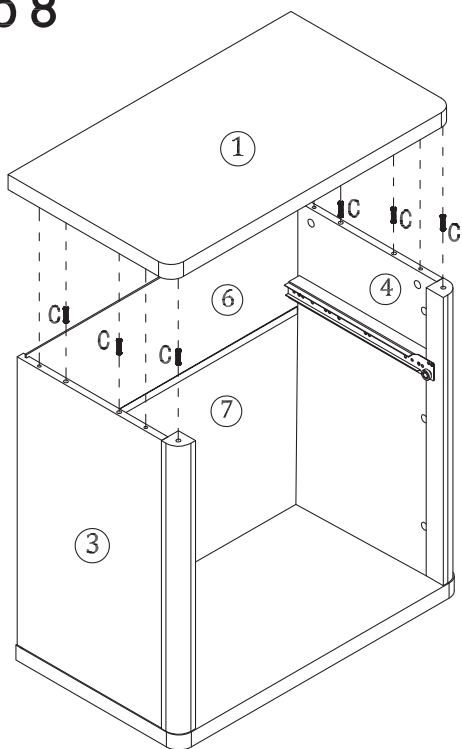


D *4


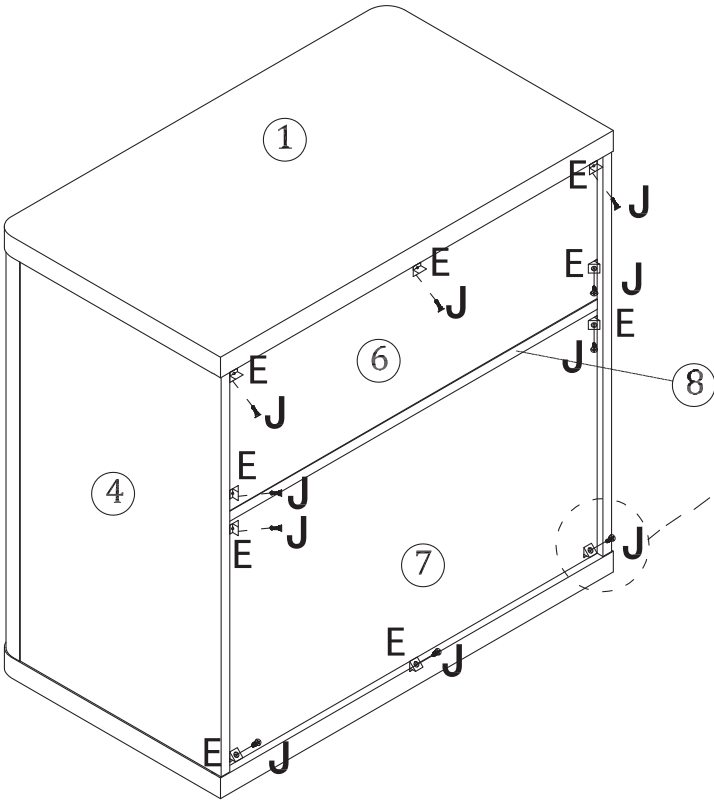
Step 7




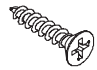
Step 8



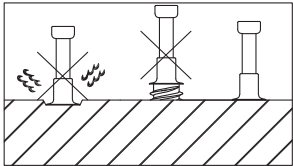
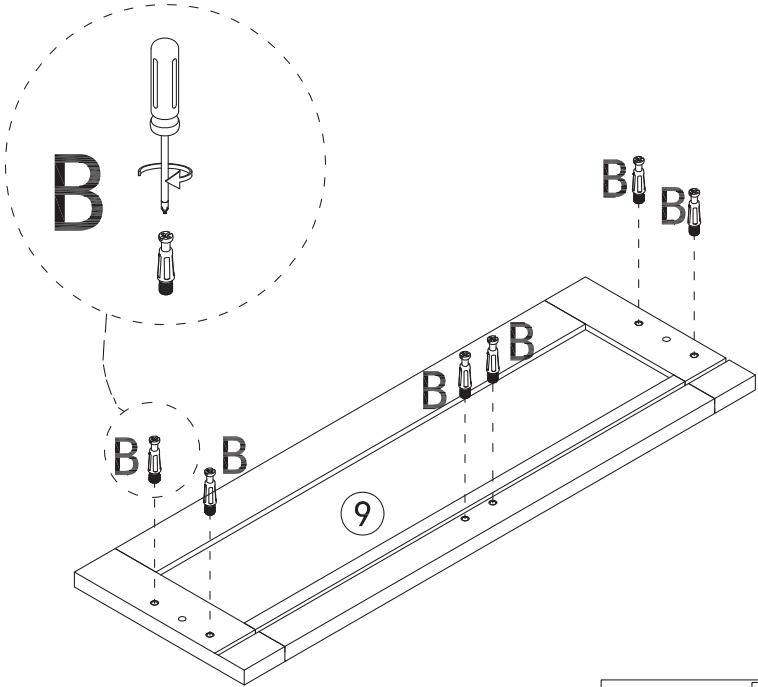
Step 9




Must Be Installed

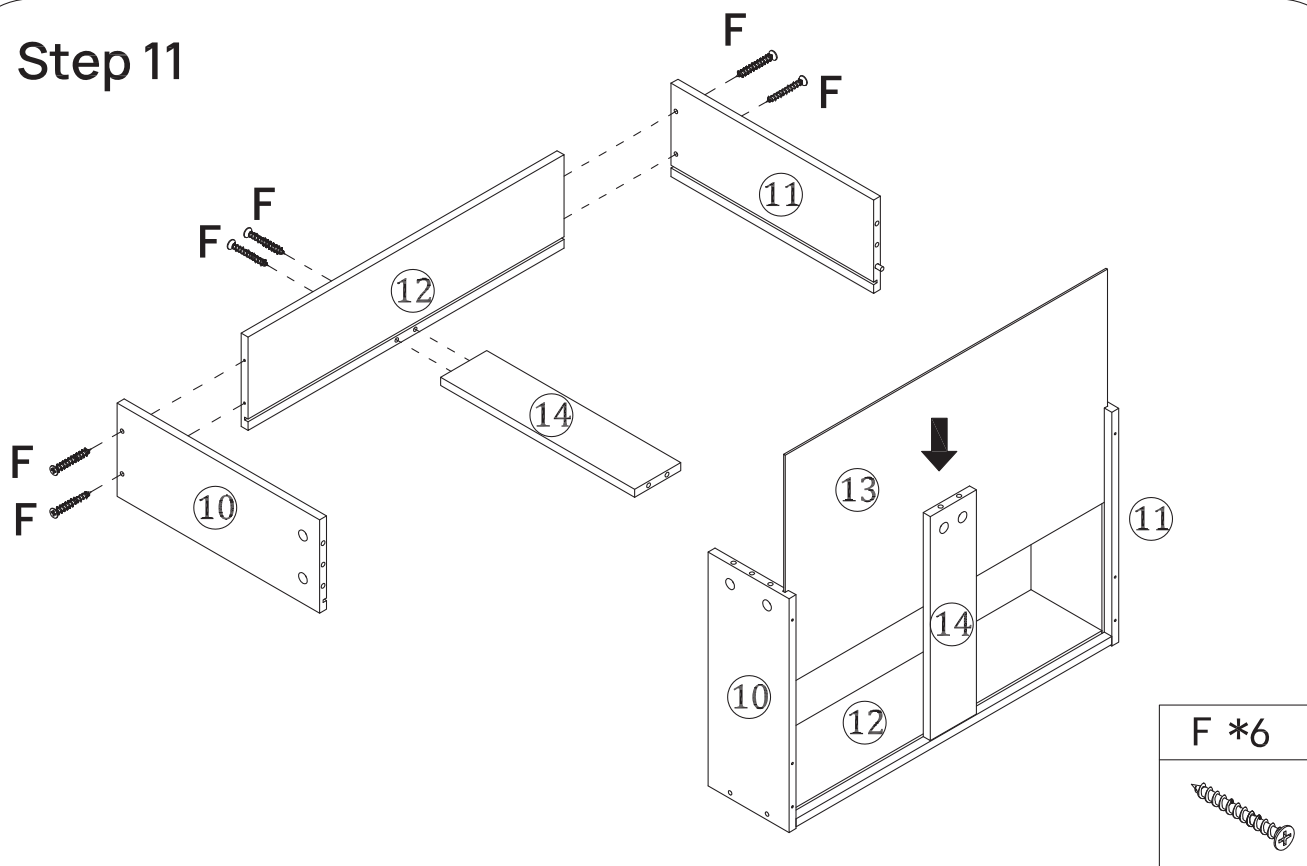
E *10	J *10
	

Step 10

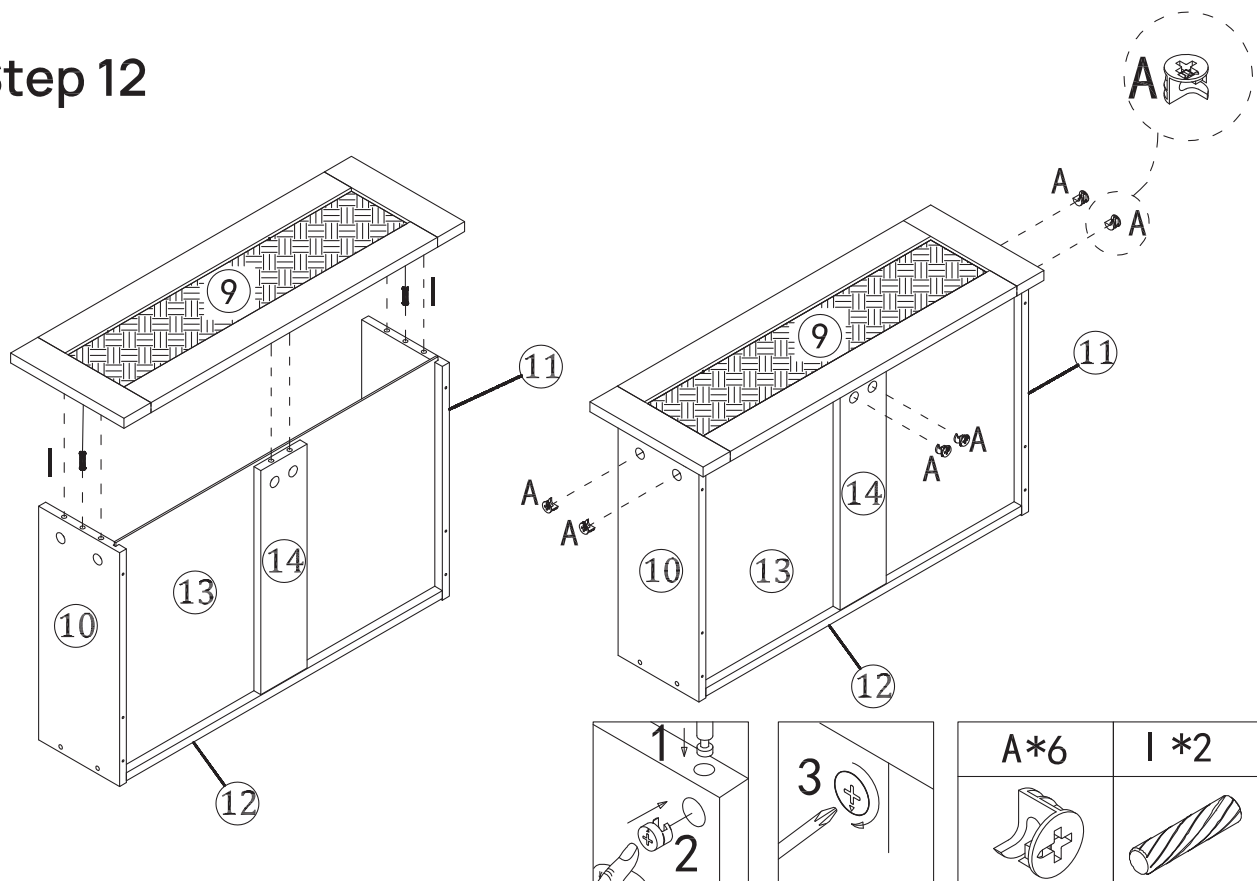


B *6


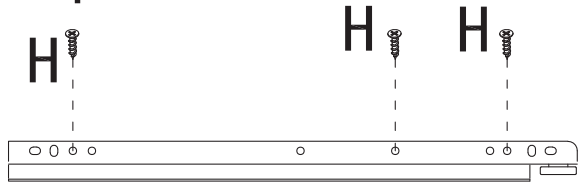
Step 11



Step 12



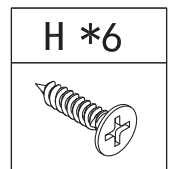
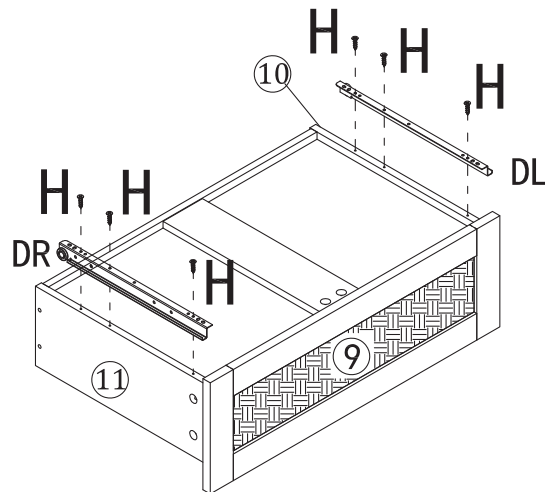
Step 13



DL

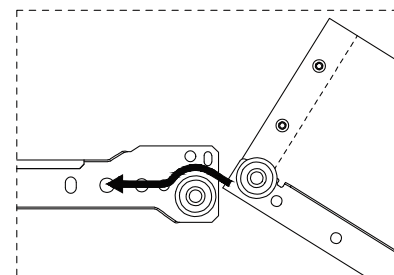
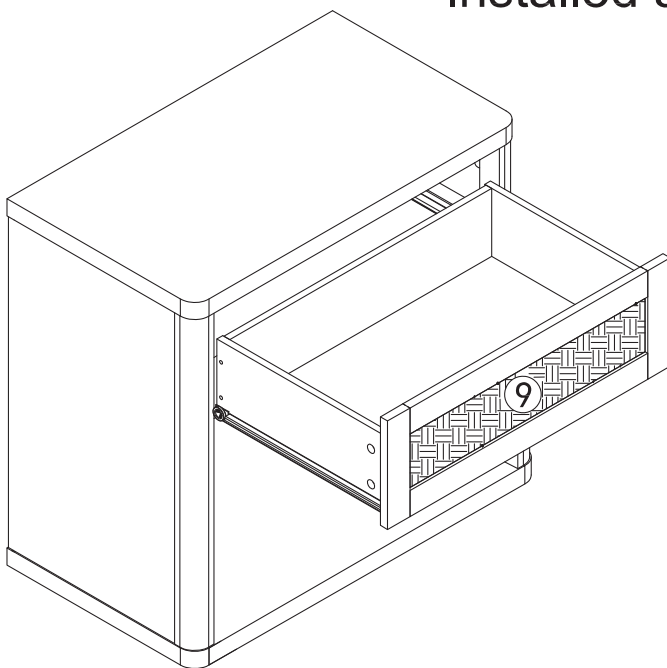


DR



Step 14

Please note that the drawers must be installed as indicated by the arrows.



Step 15

