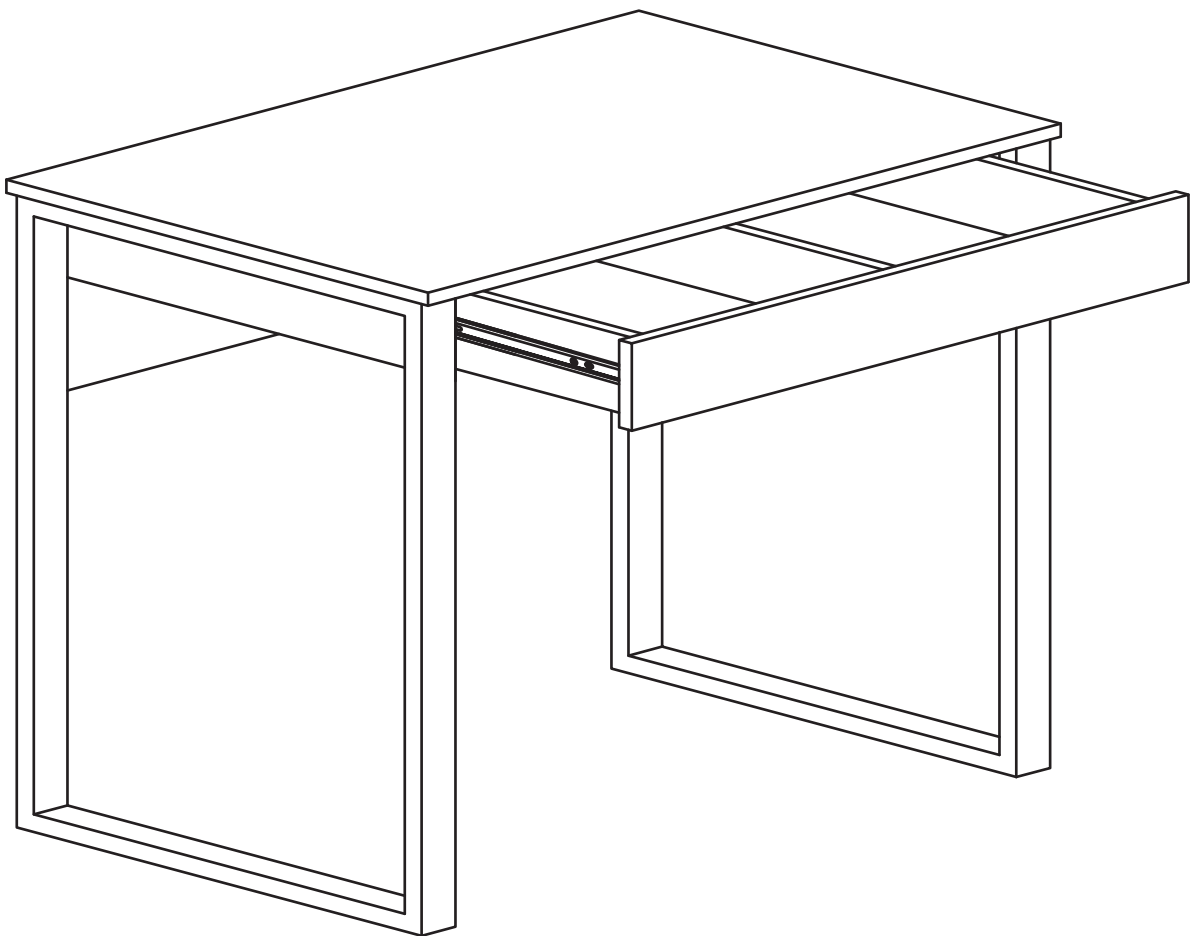


Assembly Instructions - Please keep for future reference



Dimensions

Width - 75cm
Depth - 50cm
Height - 74cm

Important – Please read these instructions fully before starting assembly



Safety and Care Advice

Important – Please read these instructions fully before starting assembly

- Check you have all the components and tools listed on pages 2 and 3.
- Remove all fittings from the plastic bags and separate them into their groups.
- Keep children and animals away from the work area, small parts could choke if swallowed.
- Make sure you have enough space to layout the parts before starting.

- Do not stand or put weight on the product, this could cause damage.
- Assemble the item as close to its final position (in the same room) as possible.
- Assemble on a soft level surface to avoid damaging the unit or your floor.
- Parts of the assembly will be easier with 2 people.

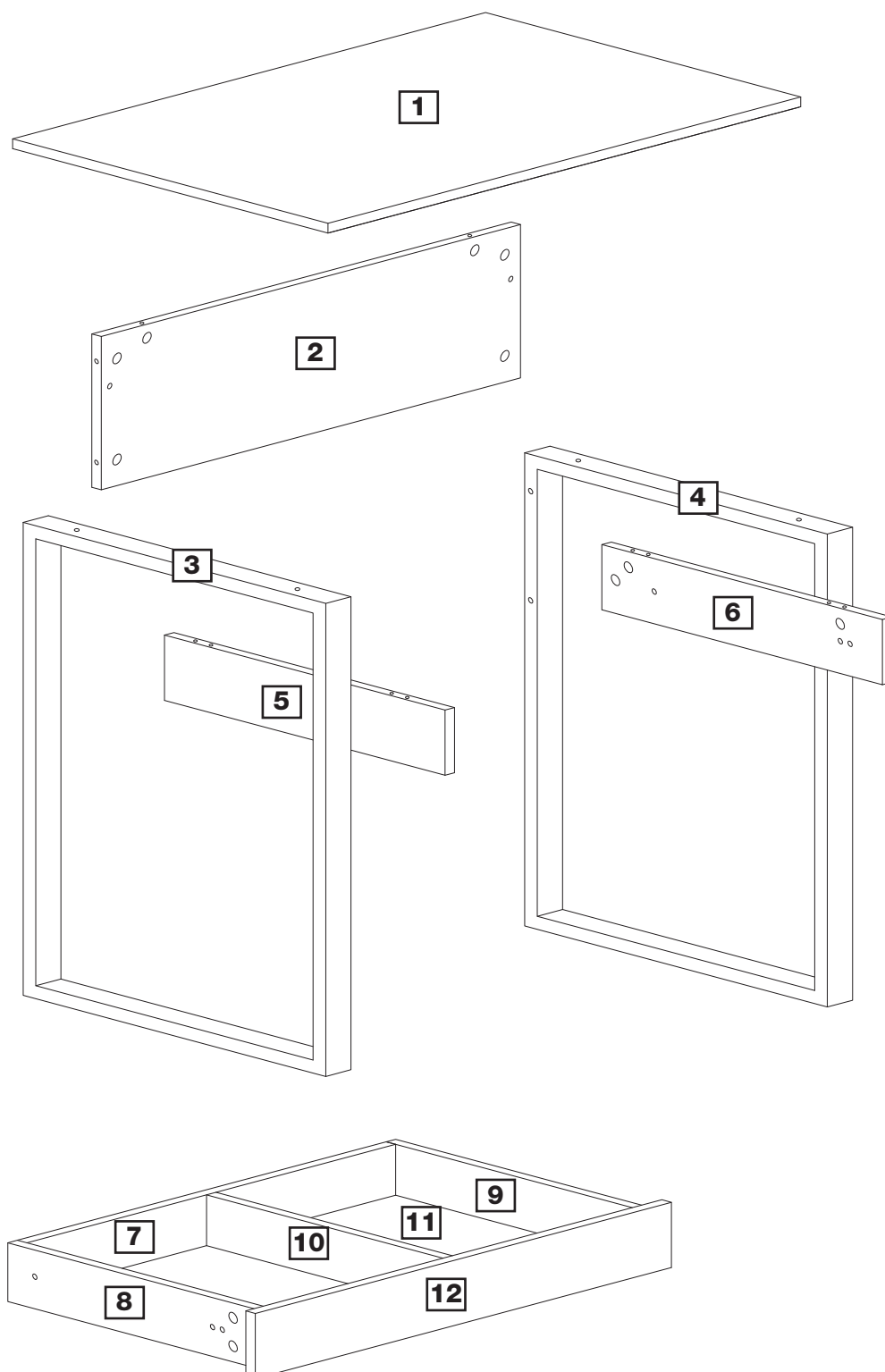


- We do not recommend the use of power drill/drivers **for inserting screws**, as this could damage the unit. Only use hand screwdrivers.
- Dispose of all packaging carefully and responsibly.

Care and maintenance




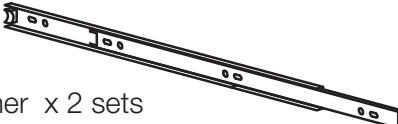




- Only clean using a damp cloth and mild detergent, do not use bleach or abrasive cleaners.
- From time to time check that there are no loose screws on this unit.
- This product should not be discarded with household waste. Take to your local authority waste disposal centre.

Please check you have all the panels listed below

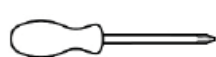


Please check you have all the fittings listed below

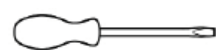
Note: The quantities below are the correct amount to complete the assembly. In some cases more fittings may be supplied than are required.

a  Camlock bolt x 22	b  30mm Wooden dowel x 6	c  Camlock nut x 22
d  Runner x 2 sets	e  12mm Screw x 12	f  30mm Bolt x 4
g  Allen key x 1	h  Sticker x 12	

Tools required



Crosshead screwdriver
(medium & large)



Flatblade screwdriver
(medium)



Eye protection
(when using a
hammer or glue)

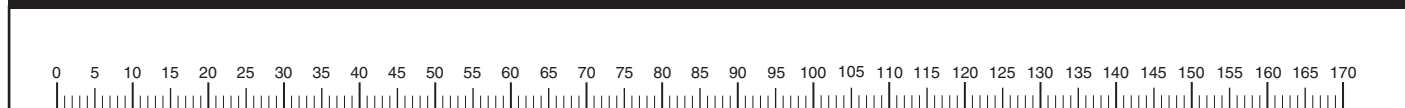


Small
hammer



Ruler/tape
measure

Ruler - Use this ruler to help correctly identify the screws



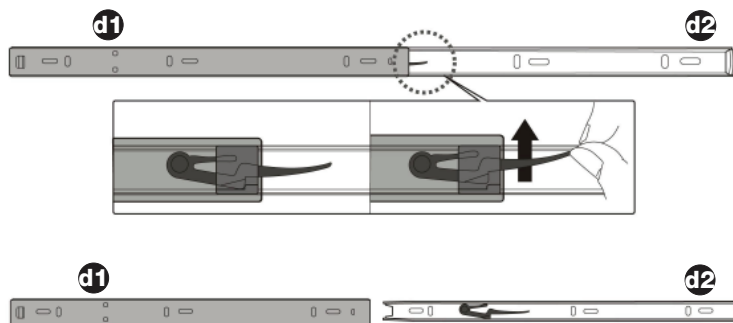
Assembly Instructions

Step 1

Assemble frame

a: Separate the two runner halves **d** as shown.

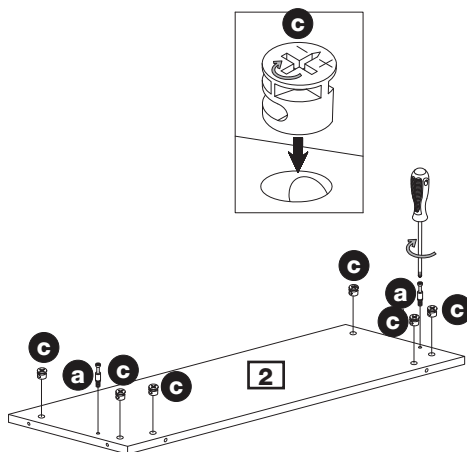
a:



Note: Press the plastic slide in the indicated direction to separate drawer runner **d1** and **d2** before assembling.

b: Insert 2 x camlock bolt **a** and 6 x camlock nut **c** into back board **2**.

b:

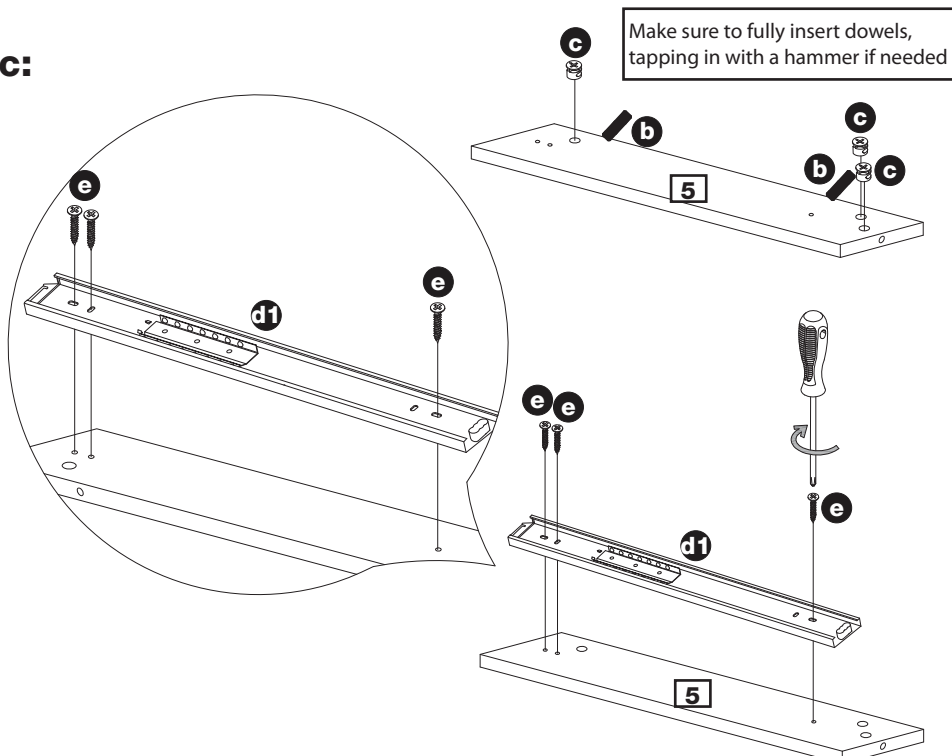


c: Insert 3 x camlock nut **c** and 2x dowels **b** into Left side **5**.

Attach runner **d1** to left side **5** using 3 x 12mm screw **e**.

Repeat above "c:" for right side **6**.

c:



Assembly Instructions

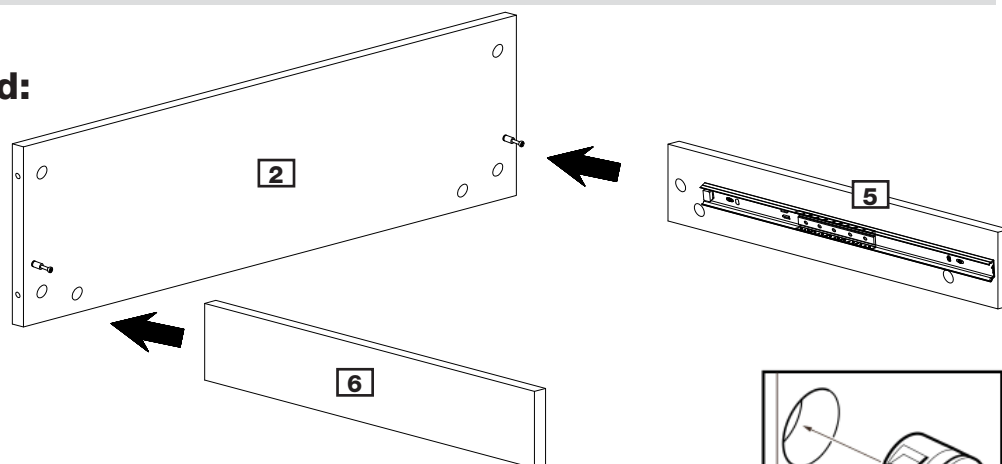
Step 1 cont.

Assemble frame

d: Attach left side **5** and right side **6** to back board **2** as shown.

Rotate the camlock nuts **c** clockwise for about 1/4 to 1/2 a turn or until the nut "connects" with the bolt and is secure.

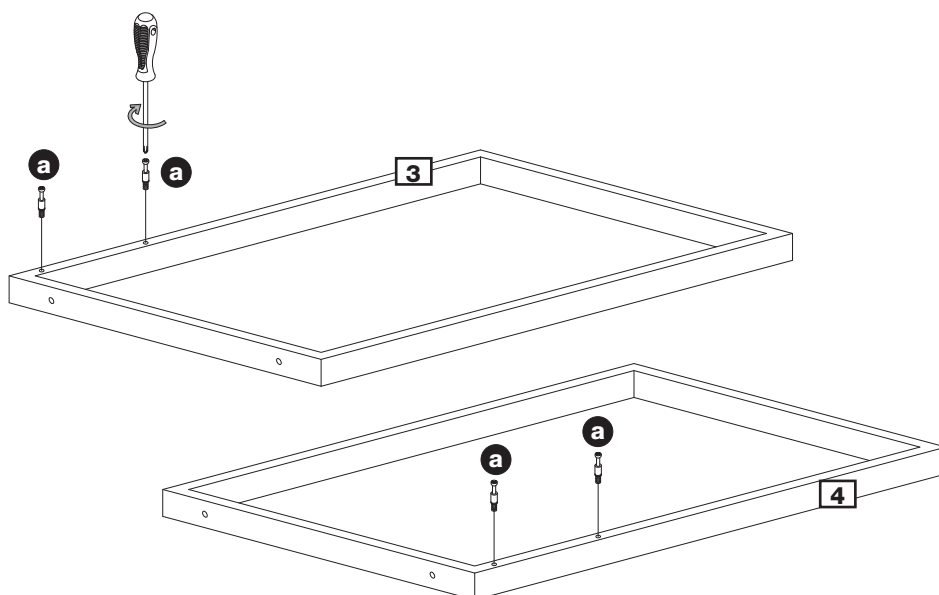
d:



e: Insert 2 x camlock bolt **a** into left leg **3**.

Repeat above "e:" for right leg **4**.

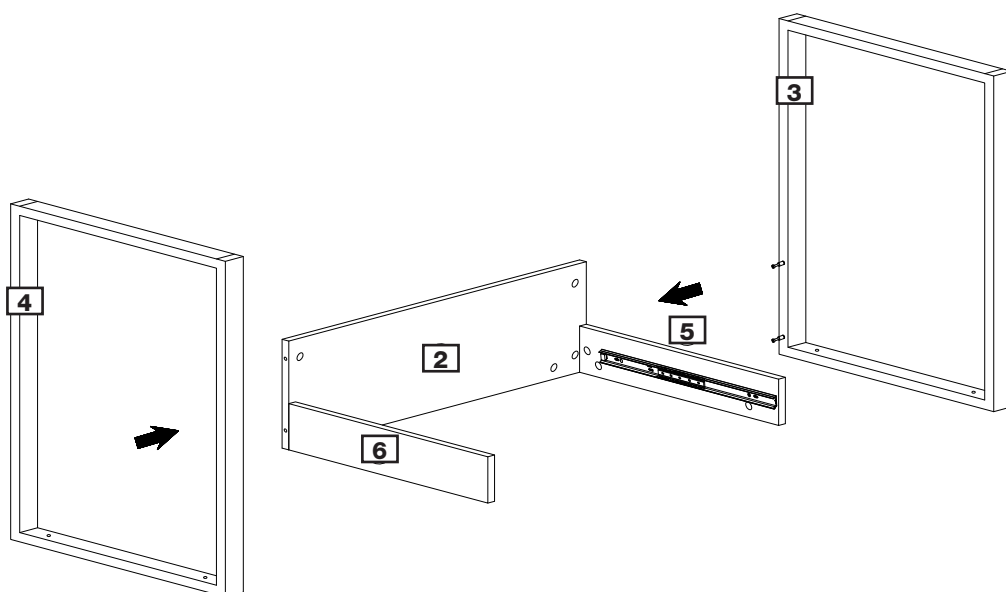
e:



f: Attach left leg **3** and right leg **4** to assembled frame as shown.

Rotate the camlock nuts **c** clockwise for about 1/4 to 1/2 a turn or until the nut "connects" with the bolt and is secure.

f:

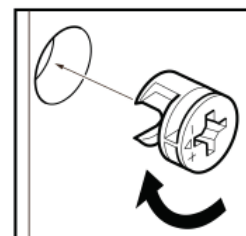
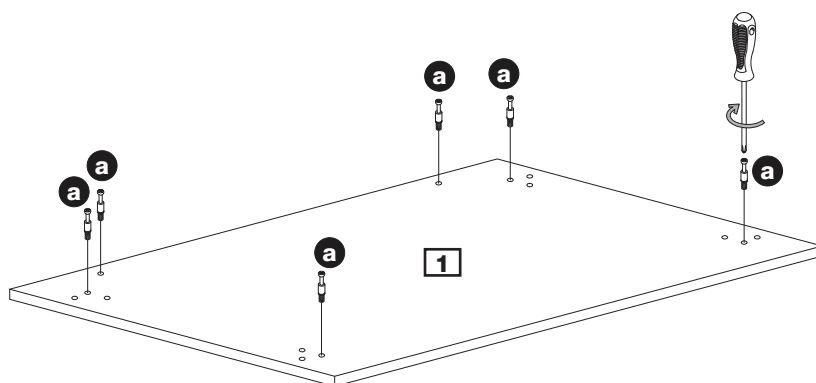


Assembly Instructions

Step 1 cont.

Assemble frame

g: Insert 6 x camlock bolt **a** into top **1**.

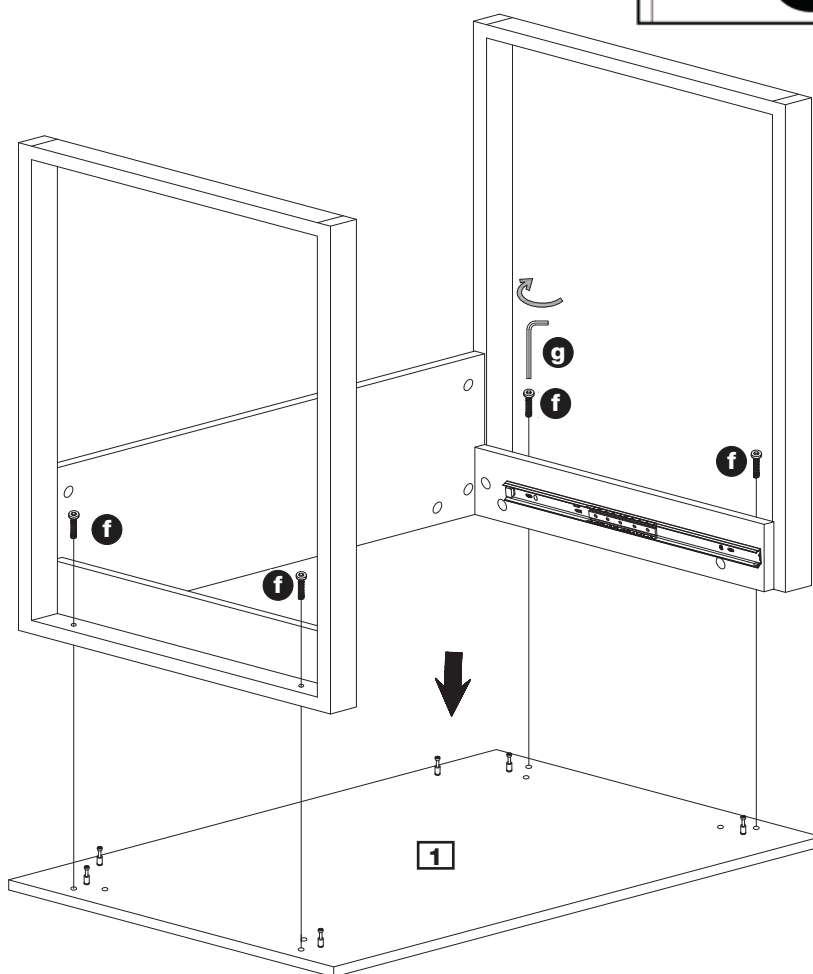


h: Attach assembled frame to top **1**.

Rotate the camlock nuts **c** clockwise for about 1/4 to 1/2 a turn or until the nut “connects” with the bolt and is secure.

Secure top **1** into place using 4 x bolt **f**.

h:



Assembly Instructions

Step 2

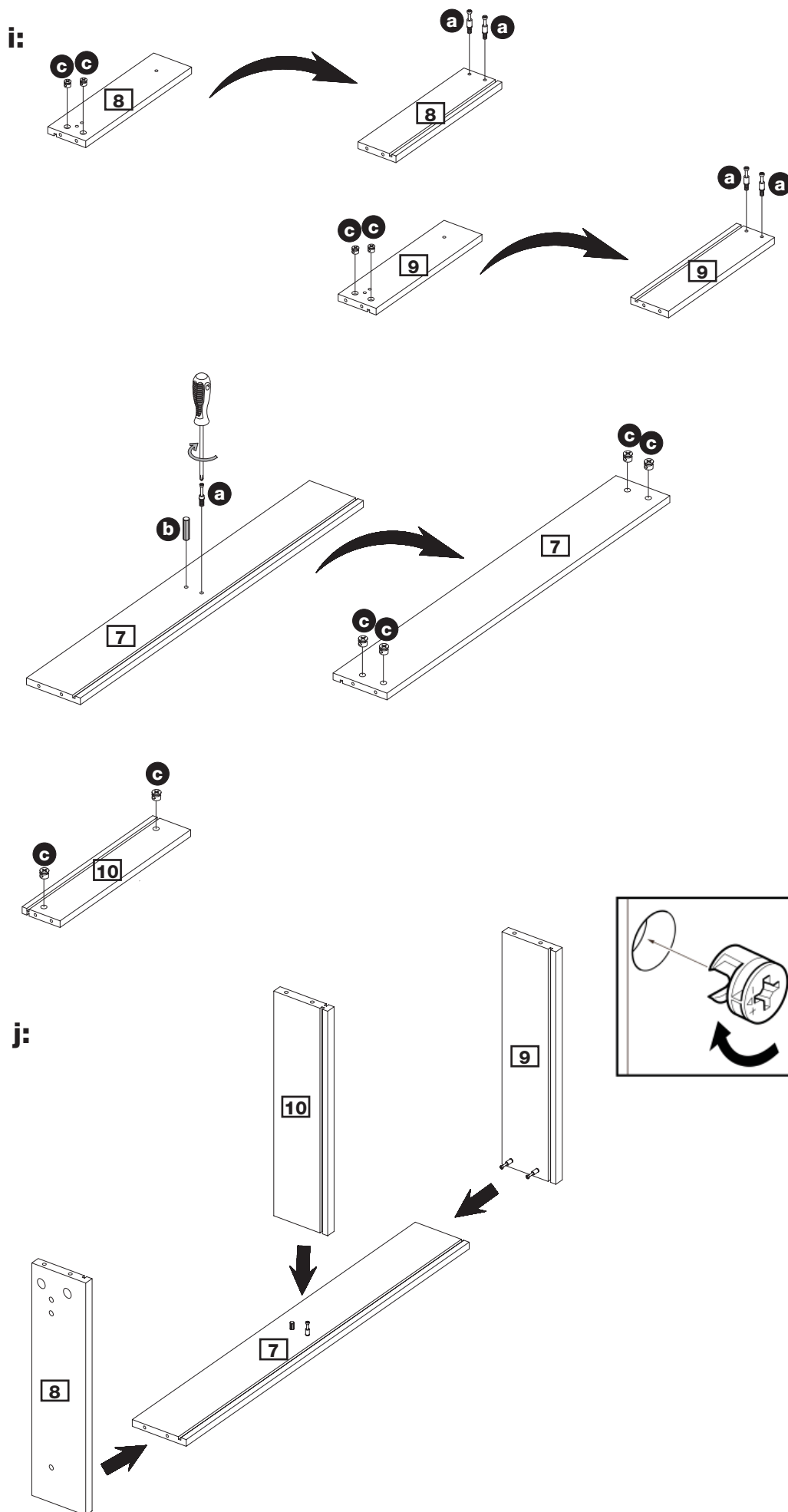
Assemble drawer

i: Insert 2 x camlock nut **c** into drawer left side **8** - flip over and insert 2 x camlock bolt **a** into drawer left side **8**.

Repeat above for drawer right side **9**.

Insert 1 x camlock bolt **a** and 1 x wooden dowel **b** into drawer back **7** - flip over and insert 4 x camlock nut **c** into drawer back **7**.

Insert 2 x camlock nut **c** into drawer divider **10**.



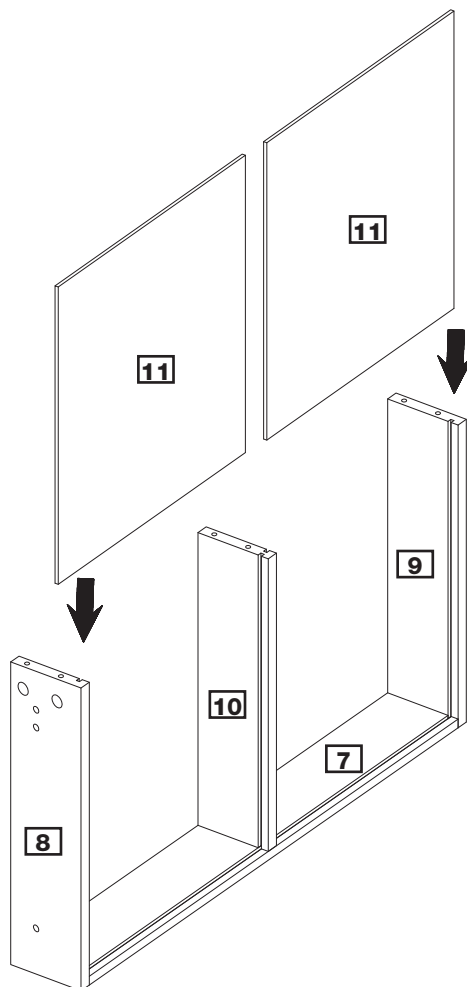
Assembly Instructions

Step 2 cont.

Assemble drawer

k: Slide 2 x drawer base **11** into assembled drawer as shown.

k:

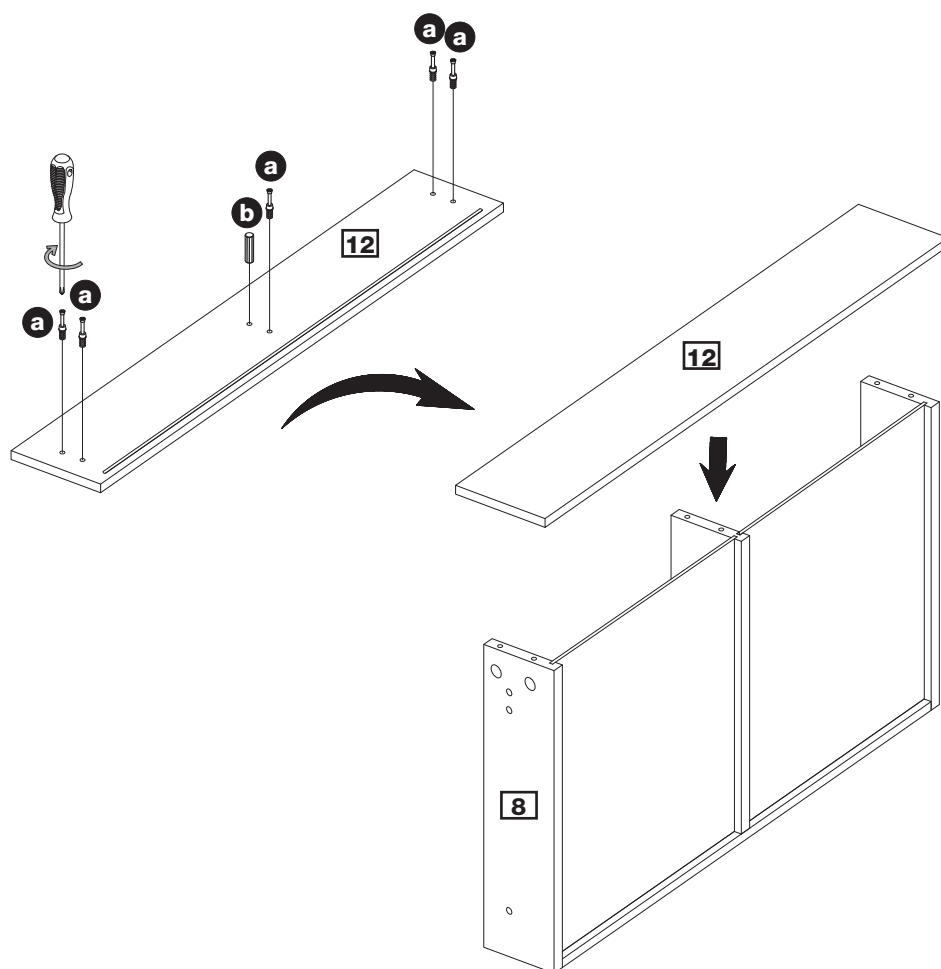


l: Insert 5 x camlock bolt **a** and 1 x wooden dowel **b** into drawer front **12**.

Attach drawer front **12** to assembled drawer frame.

To secure rotate the camlock nuts **c** clockwise for about 1/4 to 1/2 a turn or until the nut “connects” with the bolt and is secure.

l:



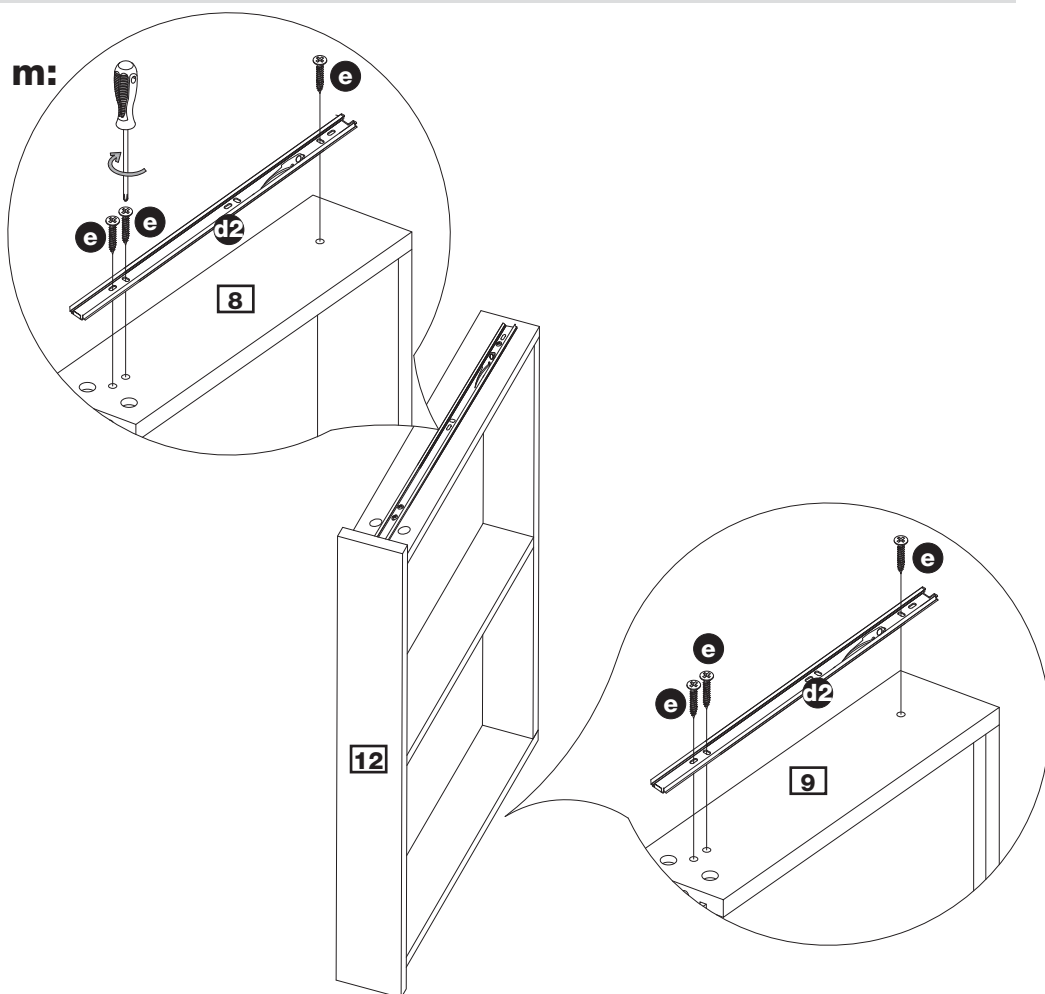
Assembly Instructions

Step 2 cont.

Assemble drawer

m: Attach runner **d2** to drawer left side **8** using 3 x 12mm screw **e**.

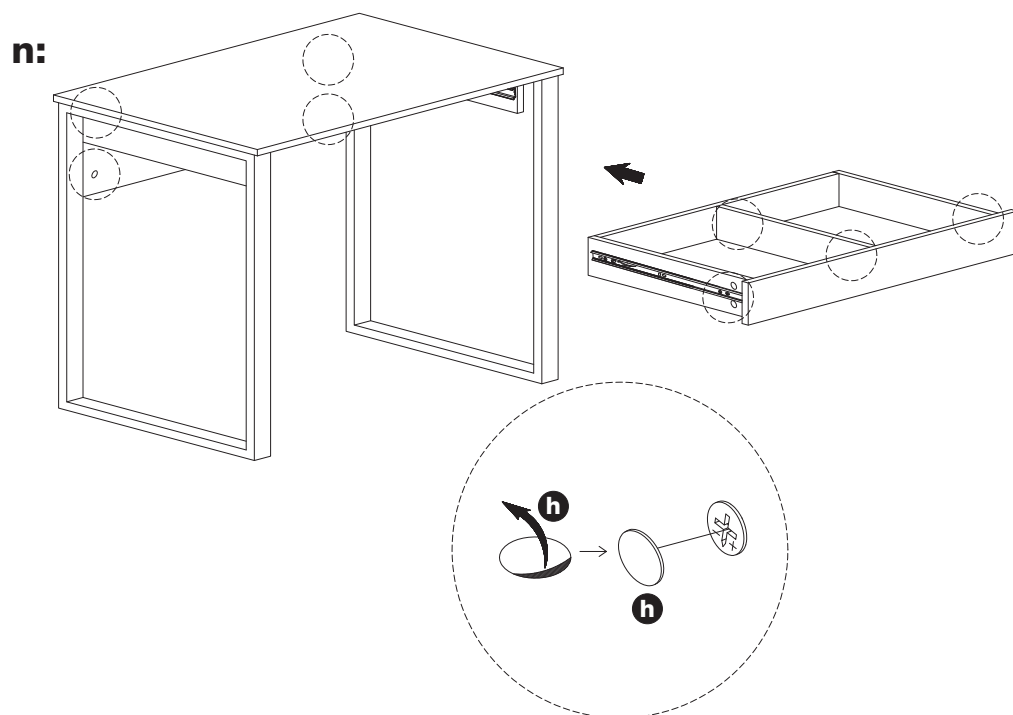
Repeat above to add runner to drawer right side **9**.



Step 3

n: Insert assembled drawer into assembled frame.

Attach 12 x screw cover sticker **h** over exposed screw heads.



Assembly is complete.