

Gothica Flemish Style 8 Way Ceiling Light



IMPORTANT:

- This is a Class I product and requires an Earth connection – 230 (240) Volts – 50hz AC
- This item contains glass ~ **Take care !**
- Unpack, check and familiarise yourself with all components and check for transit damage.
- Keep packaging until satisfied and retain this leaflet for future reference.
- Do not alter this product in any way as this will invalidate your warranty and could pose a safety hazard.
- Ensure the power is switched **off** at mains control unit [consumer unit or 'fuse-box'].
- Once fitted switch on the power at the fuse box and light switch.
- If no bulbs work, check the power supply and the electrical connections in the ceiling cup.
- All electrical connections should be covered by suitable insulation tape
- This product must be installed in accordance with the national building regulations. If in doubt consult a competent electrician.

POSITION:

- Do not mount the fitting in a damp atmosphere
- Be aware of any sunken pipes or wiring before choosing a location
- Ensure there is a sufficient power supply & ensure sufficient access to the fitting to enable safe maintenance

IF IN DOUBT ABOUT FITTING THIS PRODUCT, PLEASE CONSULT A QUALIFIED ELECTRICIAN

WARNING:

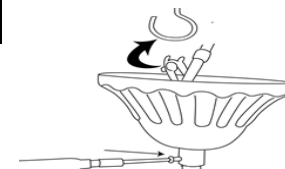
Before proceeding, make sure the ceiling light is switched OFF and the electricity is switched OFF at the mains supply board

- Drill suitable holes into the ceiling joist, ensuring that they align with the holes on the bracket, screw the bracket to the ceiling using suitable fixing screws to secure the fitting, ensuring that the fixing points can bear the total weight of the fitting. (Fig.1)
- Unscrew the ceiling cup retaining screw and hook the hook the ceiling into place using the euro hook. (Fig.2)
- Whilst supporting the weight of the fitting, connect the mains power cable to the terminal block. (Fig.3). Ensure that all connections are tight and that no loose strands are left out of the terminal connector block. When complete close the terminal block cover.
- Move the ceiling cup back into place and secure using the retaining screw (Fig.4)
- Rotate the arms 45° to ensure they are equally spaced. (Fig.5).
- The chain length can be adjusted using the carabiner supplied. (Fig.6)
- Fit the sconces on to the lampholders and insert the bulbs (not provided) into the lampholders, do not exceed the wattages indicate on the lampholder(s). (Fig.7)
- Switch back on at the mains consumer unit.

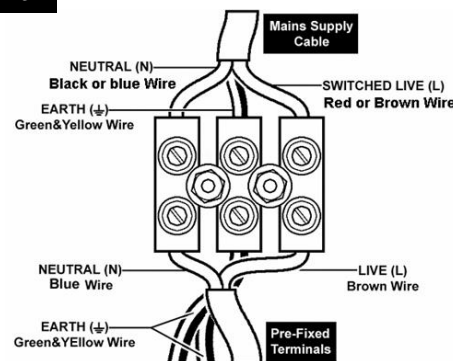
DIA.1



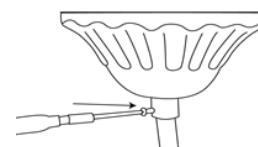
DIA.2



DIA.3

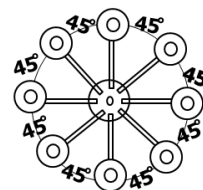


DIA.4



DIA.7

DIA.5



DIA.6

