



Hana

From animal inspired prints to classic stripes, the Hana frame collection finished in printed hair-on-hide, with accent stitching, adds a graphic accent to any space.

Sold As

Individual

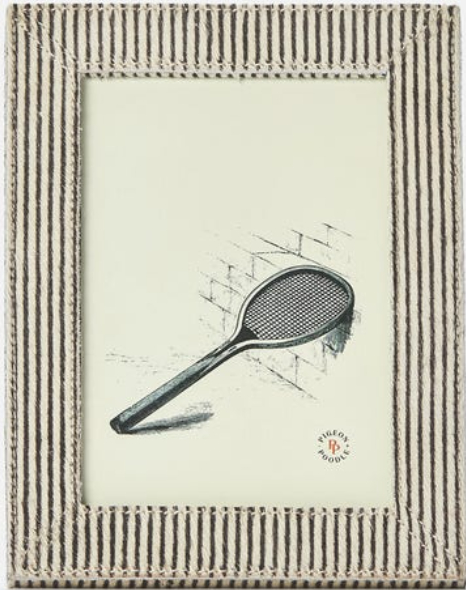
Sizes

5"L x 7"H

Additional Info

4x6 Frame Size, 6"L x 8"H 5x7 Frame Size, 7"L x 9"H 8x10 Frame Size, 10"L x 12"H

This item is handcrafted and may show slight variation from one piece to another.



FINISHES & MATERIALS



Dalmatian Print
Hair-On-Hide



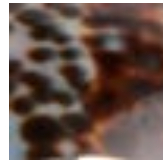
Cheetah Print
Hair-On-Hide



Zebra Hair-On-
Hide



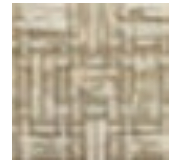
Brown Candy
Striped Hair-On-
Hide



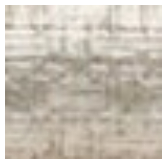
Tiger Cowrie Shell



Natural
Bone/Distressed
Gold



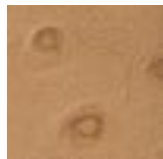
Sand Faux Rattan



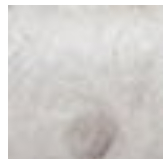
Warm Silver Faux
Rattan



Shiny White Faux
Rattan



Oat Brown Ostrich
Full-Grain Leather



Light Gray Ostrich
Full-Grain Leather



Natural Laminated
Oyster