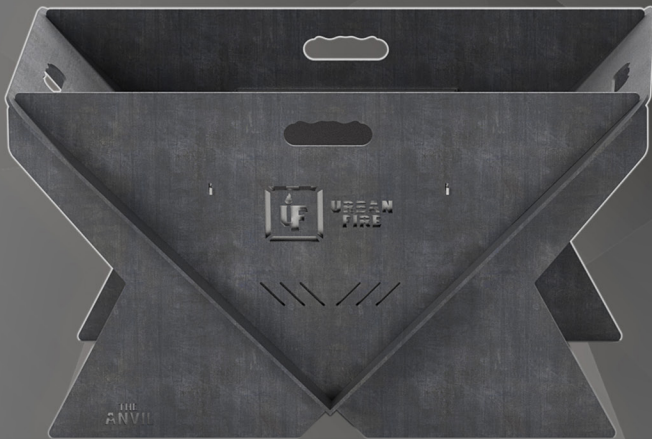




**URBAN
FIRE**

THE ANVIL™

COLLAPSIBLE FIRE PIT



GRAPHITE EDITION



CARBON EDITION



**PROUDLY MADE IN
LANCASTER
COUNTY, PA. USA**



urbanfire.co

ASSEMBLY MANUAL/ USE AND CARE GUIDE



Questions? Issues with Damaged or Missing Parts?

In order to best assist you, please contact YardCraft, the trusted distributor of Urban Fire products, NOT a third party retailer, with any questions regarding our products, damages, missing parts, or replacement parts. This will help you get what you need as quickly as possible! Call us at (717) 690-1587, or Email us at info@yardcraft.com

CAUTION

- For outdoor use only.
- Never place directly on deck/patio.
- Never place directly on grass.
- Place on pavers, crushed stone, or another suitable surface to avoid any damage caused by heat and coals.
- Fire pit will be extremely hot when burning; do not touch.
- The use of accelerants will void all manufacturer warranties.
- Burn only dry hardwoods.
- Only operate under adult supervision.
- Never leave fire pit unattended.
- Check wind and burning conditions in your area prior to use.





URBAN FIRE

We've reimagined what a fire pit can be. Meet the Anvil™, a DIY steel fire pit kit! The portable Anvil steel fire pit is designed to have the room to cook over the fire for the whole family, while still keeping the innovative ability to collapse afterwards, perfect for storing and taking it on the go. Made with 7 gauge Corten steel, The Anvil has a heavy duty build but easily slides together in 4 separate pieces to make one beautiful fire pit! The Anvil has 24 total air slots, with the option for stainless steel Secondary Combustion Attachments (see Available Options) to minimize smoke output from your fire, creating a more relaxing environment. Complete with ergonomic hand grips on each side, it's just as easy to move it and pack away as it is to put together!

ACCESSORIES



BBQ NATION PACKAGE



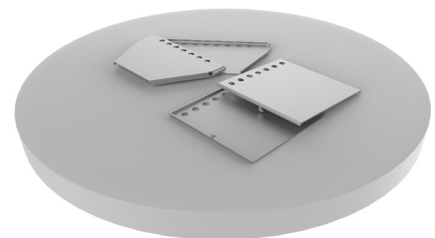
FIRE STARTERS



**ADJUSTABLE SWIVEL
GRILL**

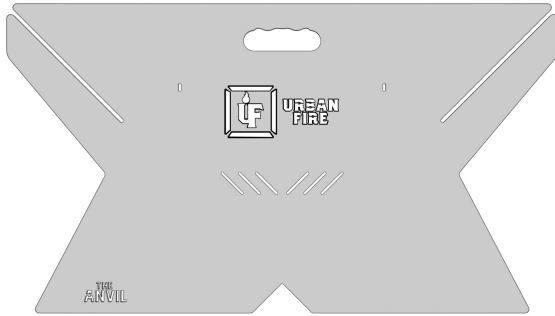


**RECTANGLE COOKING
GRATE GRILL**

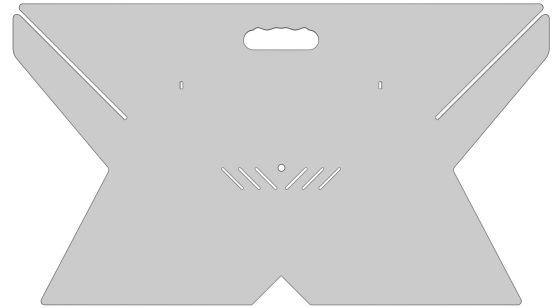


**SECONDARY COMBUSTION
ATTACHMENTS**

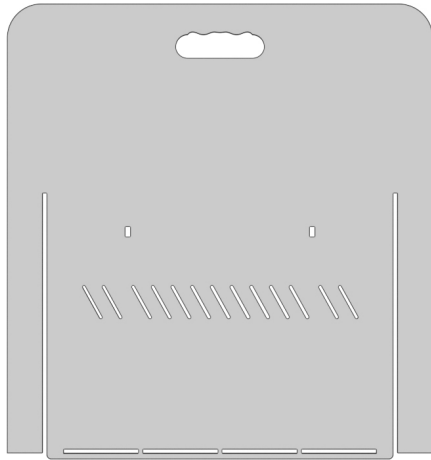
WHAT'S IN THE BOX



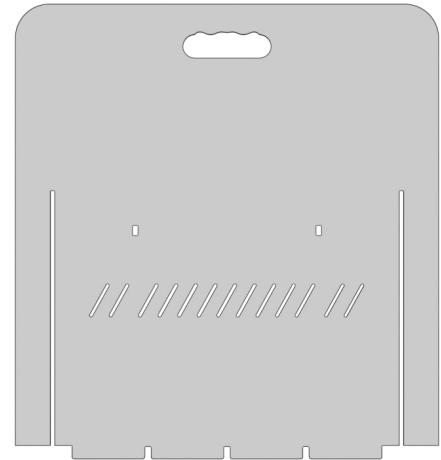
(FP)
FRONT PLATE



(RP)
REAR PLATE



(S1)
SLOT SIDE PLATE



(S2)
KEY SIDE PLATE



FIRST FIRE'S ON US!

4 PACK OF 100% ALL NATURAL, FATWOOD FIRESTARTERS

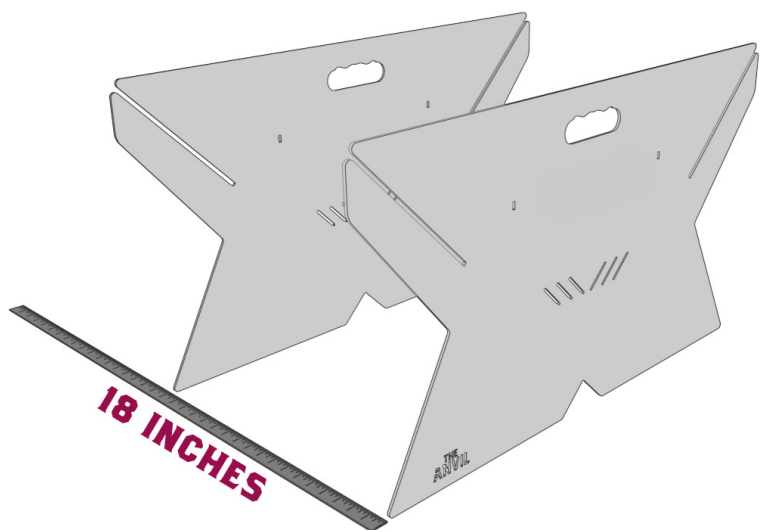


FIGURE 1

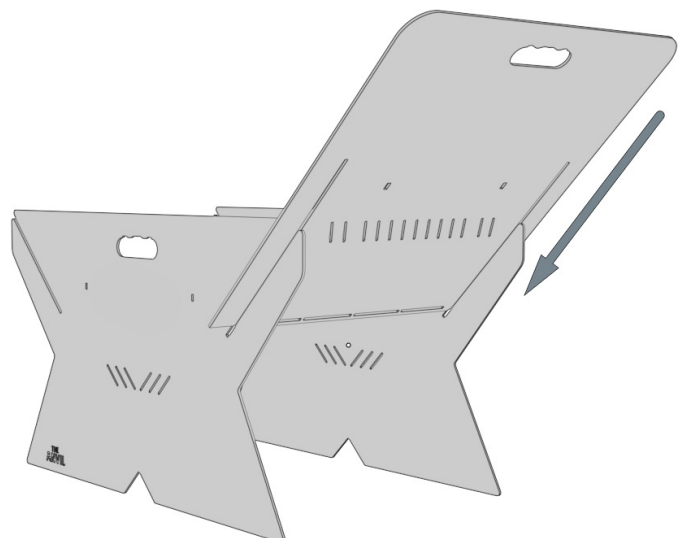


FIGURE 2

Step 1: Begin the assembly by placing the Front (FP) and Rear (RP) plates approximately 18 inches apart, as shown in Fig. 1

Step 2: Carefully slide the the Slot Side plate (S2) into the channels, as shown in Fig. 2

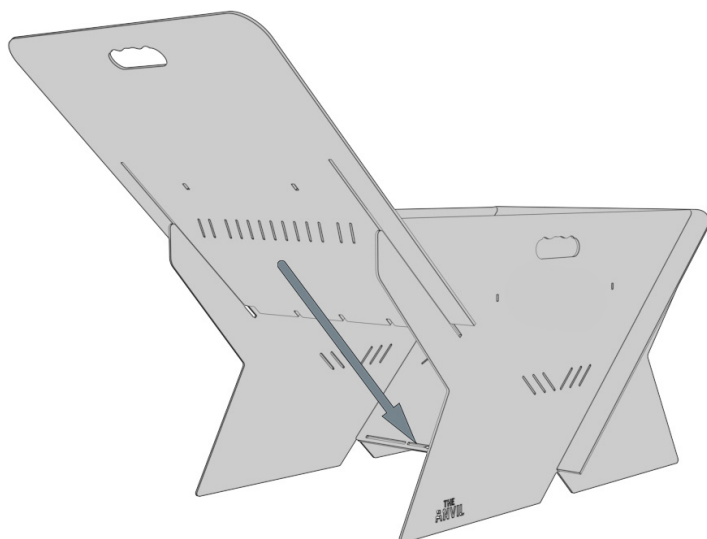


FIGURE 3

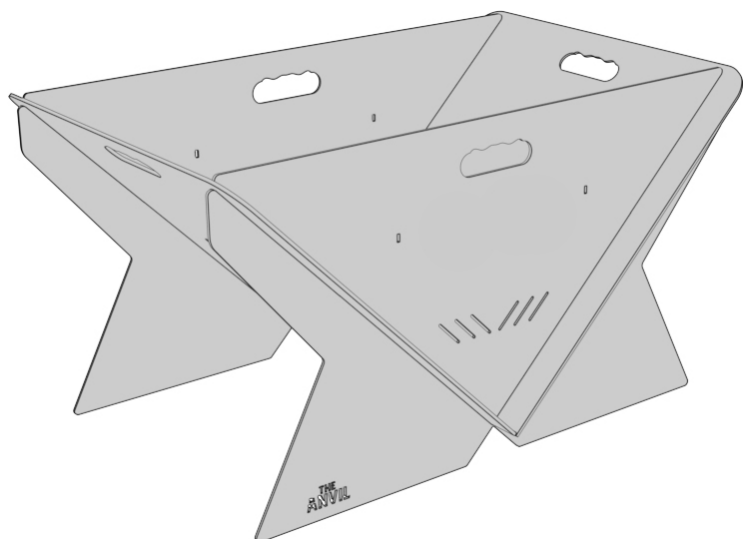


FIGURE 4

Step 3: Verify that S1 is fully seated at the bottom of FP and RP slots, as shown in Fig. 3

Step 4: Repeat steps 2 and 3 for the Key Side plate (S2) as shown in Fig. 4

CONGRATULATIONS!

YOU HAVE SUCCESSFULLY ASSEMBLED THE ANVIL™ FIRE PIT!



**URBAN
FIRE**