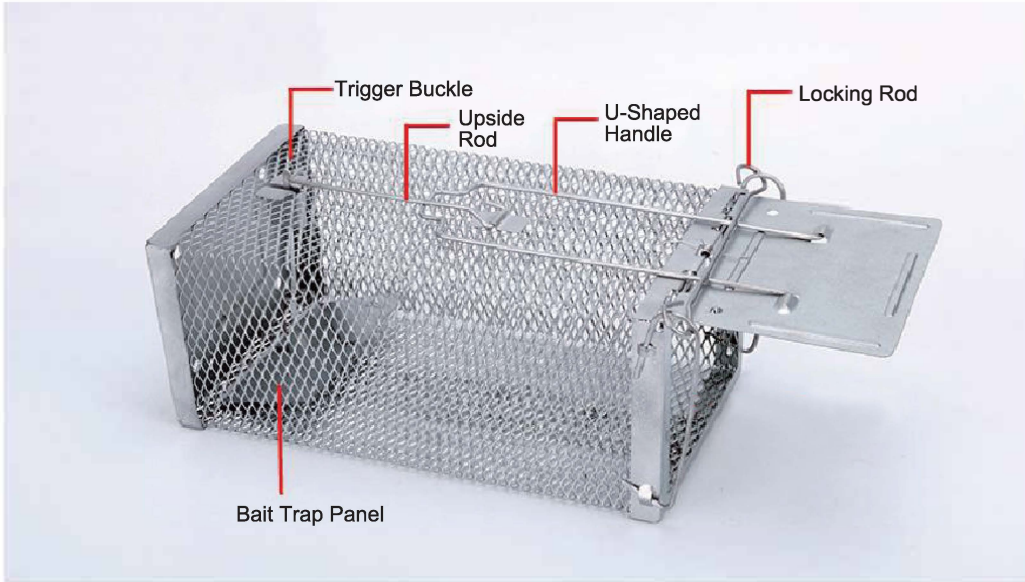


# User Manual

## Welcome

Thanks for purchasing this **Mouse Cage Trap**, Please read this user manual carefully before use.

## Product Structure



## Package List

Upon opening the package, please check for the following items:

- \* 1Pc/2Pcs × One-door Mouse Cage Trap with Detachable U Shaped Rod(According to your purchase)
- \* 1 × User Manual

## Highlights

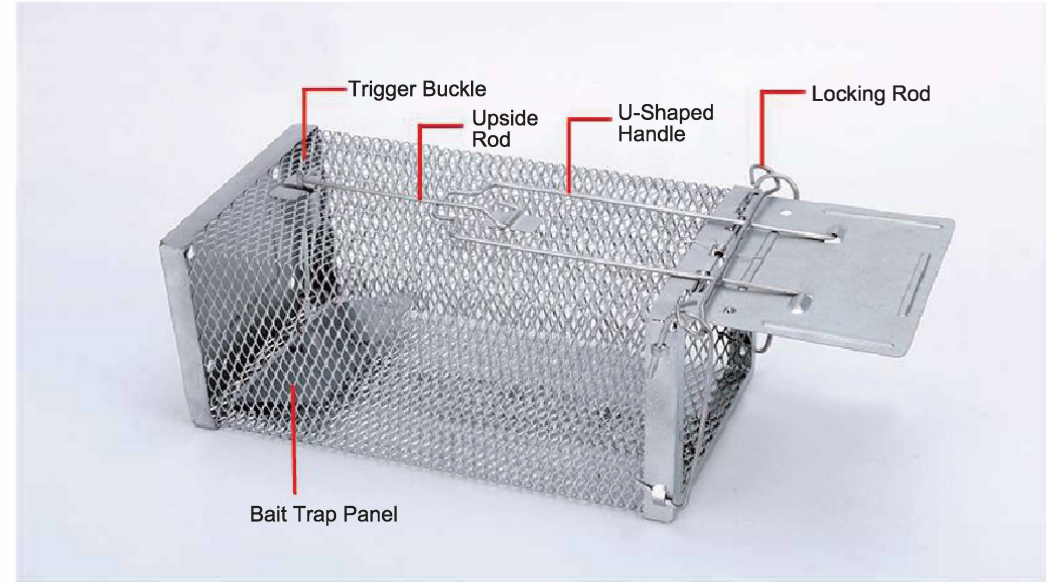
- \* Sets up in seconds, our sturdy cage trap can be used indoors or outdoors.
- \* Small mesh openings and door locked tightly ensure the trapped rodent animals no way to escape easily.
- \* This humane mouse trap does not kill or injure captured animal, release any animals caught unintentionally.
- \* Constructed of sturdy galvanized steel, lightweight but durable to last longer without rust and corrosion issue.

# User Manual

## Welcome

Thanks for purchasing this **Mouse Cage Trap**, Please read this user manual carefully before use.

## Product Structure



## Package List

Upon opening the package, please check for the following items:

- \* 1Pc/2Pcs × One-door Mouse Cage Trap with Detachable U Shaped Rod(According to your purchase)
- \* 1 × User Manual

## Highlights

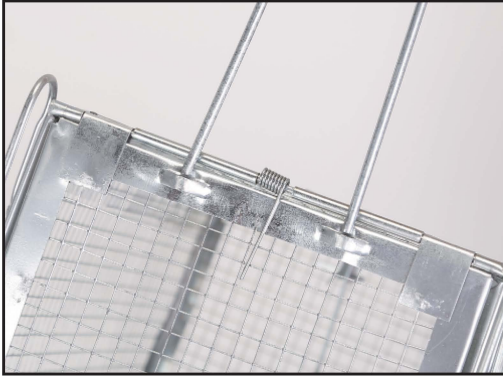
- \* Sets up in seconds, our sturdy cage trap can be used indoors or outdoors.
- \* Small mesh openings and door locked tightly ensure the trapped rodent animals no way to escape easily.
- \* This humane mouse trap does not kill or injure captured animal, release any animals caught unintentionally.
- \* Constructed of sturdy galvanized steel, lightweight but durable to last longer without rust and corrosion issue.

## How To Bait

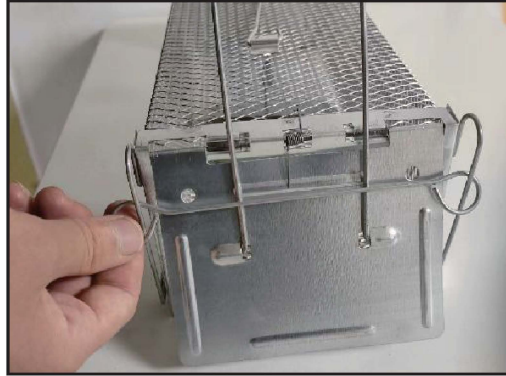
You can sprinkle the trigger plate with bait from outside of the cage to help entice an animal for trapping. If you put bait inside through the door, fix the trigger pole in the small loop with the other hand and hold it before putting your hand inside.

## How To Set Up

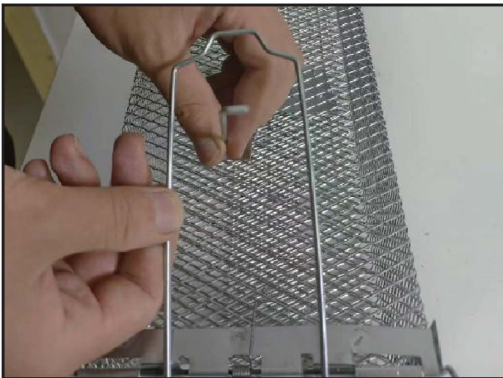
Tips: Hold the upside rod while placing bait in case of getting hurt caused by accidently door closing.



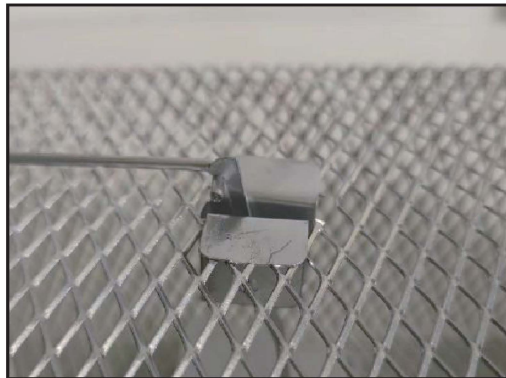
1. Insert the U-shaped rod into 2 slots



2. Pull the U-shaped handle and lift the locking rod to the top



3. Push the upside rod through the U-shaped rod



4. Hook the upside rod to the trigger buckle

## Friendly Reminder

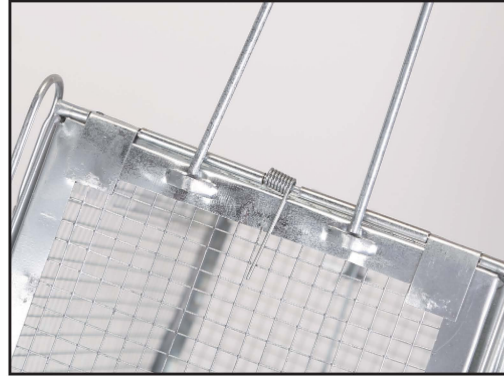
- \* Mind your hands. This trap utilizes the leverage theorem and will make an immediate response once triggered that can cause injury.
- \* Keep the cage away from children.

## How To Bait

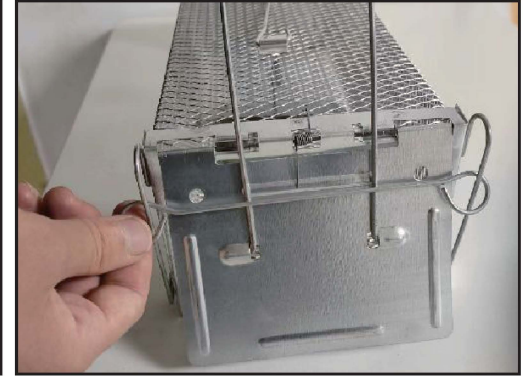
You can sprinkle the trigger plate with bait from outside of the cage to help entice an animal for trapping. If you put bait inside through the door, fix the trigger pole in the small loop with the other hand and hold it before putting your hand inside.

## How To Set Up

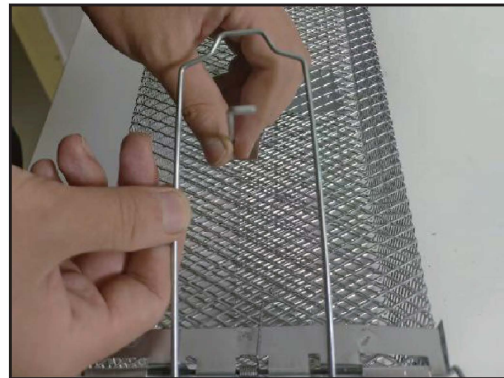
Tips: Hold the upside rod while placing bait in case of getting hurt caused by accidently door closing.



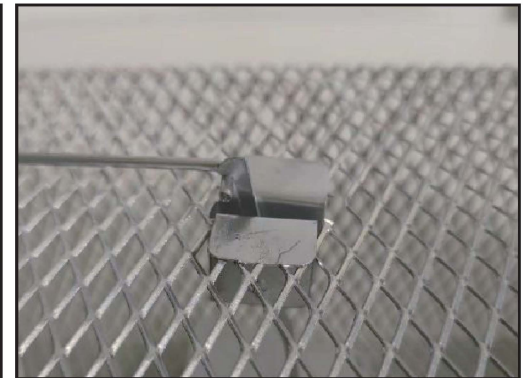
1. Insert the U-shaped rod into 2 slots



2. Pull the U-shaped handle and lift the locking rod to the top



3. Push the upside rod through the U-shaped rod



4. Hook the upside rod to the trigger buckle

## Friendly Reminder

- \* Mind your hands. This trap utilizes the leverage theorem and will make an immediate response once triggered that can cause injury.
- \* Keep the cage away from children.