

Trim Installation (with and without Diverter) for Traditional Roman Tubs.

ARTISTIC BRASS™

NOTE: DO NOT permanently install flanges prior to cutting the end valve stems.

Installation Instructions for Spout

1. Complete ROUGH-IN instructions PRIOR to installing finished trim. For reference, see M & I included in Roman Tub rough-in.
2. Carefully unscrew white plastic test cap from the spout shank and discard.
3. To prevent damage to the spout shank O-Ring, unscrew the set screw enough to clear the spout shank.

If your model does not have a spout base go to Step 4.

If your model has a spout base: Unthread upper body shank and remove flat washer. Place step washer into hole in the spout base. Insert upper body shank into step washer/spout base assembly. Rethread upper body shank. (See Illustration A).

4. Place spout assembly onto the spout shank. (See Illustration B). Make sure spout assembly rests on finished surface and secure spout assembly by tightening set screw using 1/8" allen wrench (not supplied). Insert plug button (if supplied) in set screw access hole of spout assembly.

Installation Instructions for Flange and Flange Base Flange Base Installation

For Series 68 & 330 with Flange Bases and Porcelain Flanges

Remove top hex nuts and washers. Apply silicone sealant to bottom of flange base. Slide on flange bases. Replace washers & hex nuts. Adjust the top hex nut on the end valves until 2 or 3 threads are visible **above** the hex nut. Tighten bottom nut (if necessary). Wipe off excess sealant with soft cloth. Temporarily thread on flange. This should allow the flange to seat properly on the finished surface.

For Series 66 with Flange Bases and Porcelain Flanges

Remove top hex nuts and washers. Apply silicone sealant to bottom of flange base. Slide on flange bases. **Replace hex nut only.** Adjust the top hex nut on the end valves until 2 or 3 threads are visible **above** the hex nut. Tighten bottom nut (if necessary). Wipe off excess sealant with soft cloth. Temporarily thread on flange. This should allow the flange to seat properly on the finished surface.

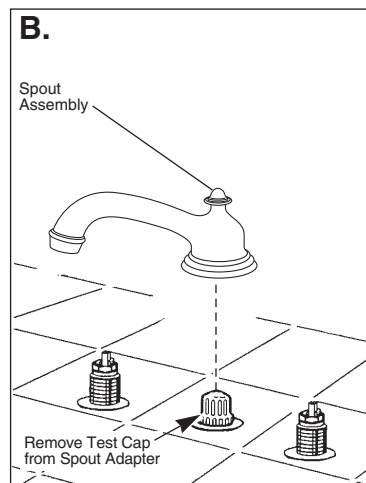
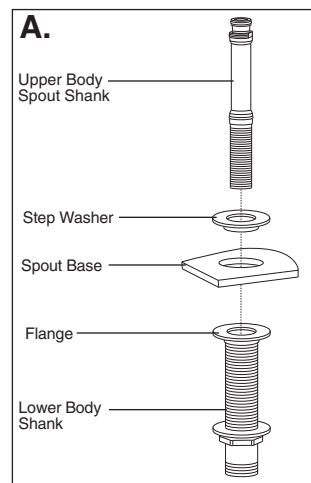
Flange Installation

For Series 30, 32, 34, 47, 63 & 64.

Adjust the top hex nut on the end valves until 2 or 3 threads are visible **above** the hex nut. Tighten bottom nut (if necessary). Thread on flange. This should allow the flange to seat properly on the finished surface.

For Series 27 & 29.

Remove top hex nut. Mark a line on the hex nut and rethread on end valves threads 2 full revolutions only. Tighten bottom nut (if necessary). Thread on flange. This should allow the flange to seat properly on the finished surface.



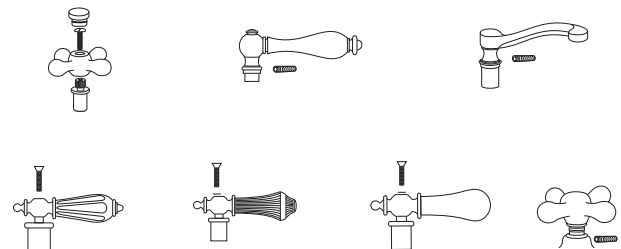
Cutting End Valve Stems

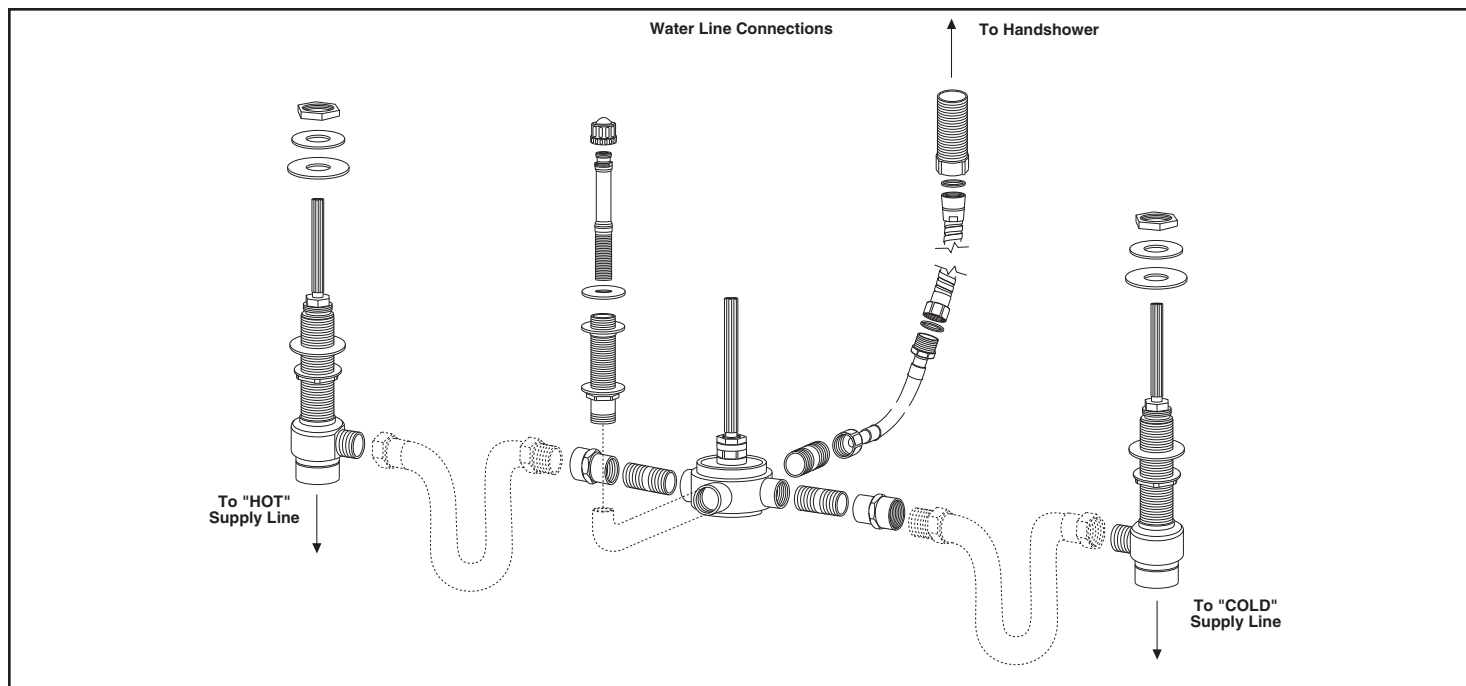
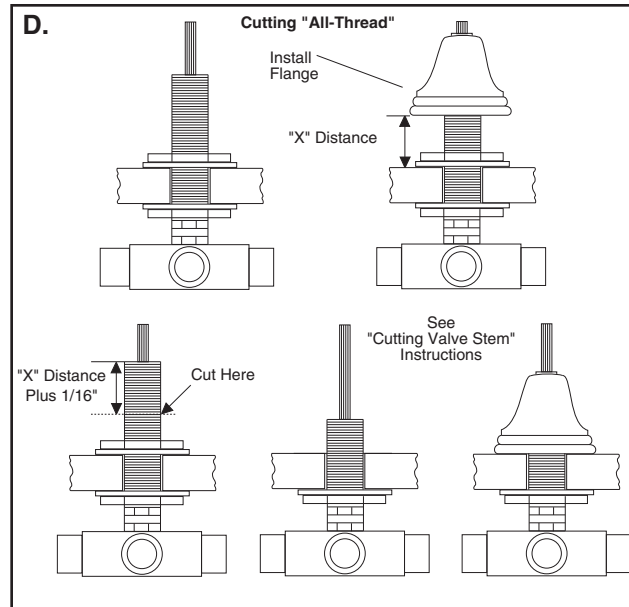
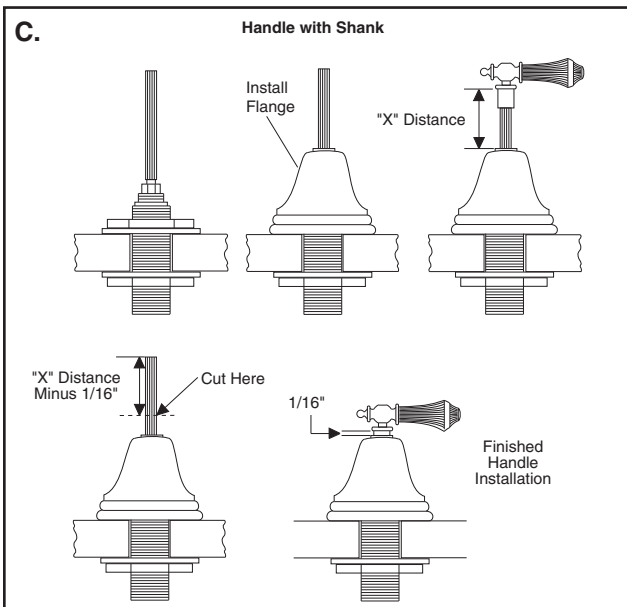
1. Temporarily place handle with shank onto valve stem.
2. Determine the amount of valve stem that will need to be cut off to allow the ridge on the handle shank to slightly clear the flange. (See Illustration C. on page 2). Measure the distance, "X", between this point on the handle shank and the top of the flange and subtract 1/16" to determine the amount of valve stem that will be cut off.
3. Remove handle and flange. (If flange has already been permanently installed, protect flange with cloth). Cut off valve stem as shown in Illustration C. on page 2. Remove burrs from the cut valve stem.
4. If you removed the flange, apply non-abrasive sealant to underside of flange. **Note:** Sealant under flange is not necessary if you have a model with a flange base. Thread flange onto the valve body so that flange fits tightly against deck or flange base. Wipe off excess sealant with soft cloth.

Cutting Diverter Valve Stems and "All-thread"

1. **Series 66, 68 & 330 only:** Remove the top hex nut & washer. Slide base onto "All-thread". Replace washer & hex nut.
2. Thread on flange until it bottoms out. Measure and write down the distance between the bottom of the flange and the top of the flange base. (See Illustration D. on page 2). Add 1/16" from this distance. This will be referred to as "X".
3. **All other Series:** Thread on flange until it bottoms out. Measure and write down the distance between the bottom of the flange and the finished surface. (See Illustration D. on page 2). Add 1/16" from this distance. This will be referred to as "X".
4. Remove flange. Measure down from the top of the All-thread the "X" distance and mark a line on the "All-thread" at this point.
5. Cut the "All-thread" on the line that you marked, being careful not to damage the threads.
6. You are now ready to cut the diverter valve stem to the same height as the end valve stems. (Refer to "Cutting End Valve Stems" instructions). After cutting diverter valve stems, apply silicone sealant to underside of flange. **Note:** Sealant under flange is not necessary if you have a model with a flange base. Thread flange onto "All-thread" until it seals against the base.
7. Make connections for water supply lines according to Illustration on page 2.
8. **NOTE:** If your model has a stream straightener remove it now. After connections have been made, turn handles to full on position. Turn on water supplies, check for leaks and let lines flush for one minute without moving faucet handles. This will remove debris from lines which can damage internal parts of faucet and create leaks. Replace stream straightener (if applicable).

There are many different handle design configurations. Please locate your handle design below.





Artistic Brass® Faucet Company Lifetime Faucet and Finish Limited Warranty

All parts and finishes of the Artistic Brass® faucet are warranted to the original consumer purchaser to be free from defects in material and workmanship for as long as the original consumer purchaser owns their home. Artistic Brass® Faucet Company recommends using a professional plumber for all installation and repair.

Artistic Brass® will replace, FREE OF CHARGE, during the warranty period, any part or finish which proves defective in material and/or workmanship under normal installation, use, and service. Replacement parts may be obtained by writing to:

Artistic Brass Faucet Company
Product Service
55 E. 111th Street
Indianapolis, IN 46280

This warranty is extensive in that it covers replacement of all defective parts and even finish, but these are the only two things that are covered. LABOR CHARGES AND/OR DAMAGE INCURRED IN INSTALLATION, REPAIR, OR REPLACEMENT AS WELL AS ANY OTHER KIND OF LOSS OR DAMAGE ARE EXCLUDED. Proof of purchase (original sales receipt) from the original consumer purchaser must be made available to Artistic Brass® for all warranty claims. THIS IS THE EXCLUSIVE WARRANTY BY ARTISTIC BRASS® FAUCET COMPANY, WHICH DOES NOT MAKE ANY OTHER WARRANTY OF ANY KIND, INCLUDING THE IMPLIED WARRANTY OF MERCHANTABILITY.

This warranty excludes all industrial, commercial, and business usage, whose purchasers are hereby extended a five year limited warranty from the date of purchase, with all other terms of this warranty applying except for the duration of the warranty. This warranty is applicable only to Artistic Brass® faucets made after January 1, 1996.

Some states do not allow the exclusion or limitation of incidental or consequential damages, so the above limitation or exclusion may not apply to you. Any damage to this faucet as a result of misuse, abuse, or neglect, or any use of other than genuine Artistic Brass® replacement parts WILL VOID THE WARRANTY.

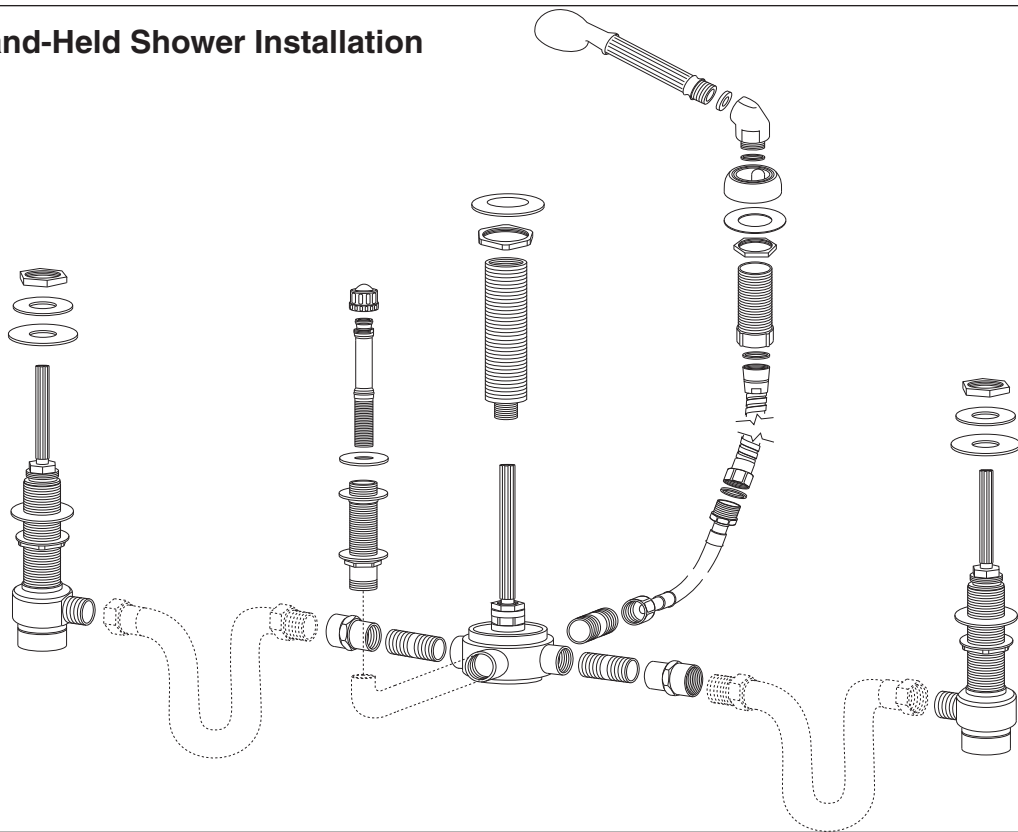
This warranty gives you specific legal rights, and you may also have other rights which vary from state to state. It applies only for Artistic Brass® Faucets installed in the United States of America, Canada, and Mexico.

© 2012, Masco Corporation of Indiana

ARTISTIC BRASS™

A DIVISION OF MASCO CORPORATION OF INDIANA • ROUTE 46 WEST, P.O. BOX 47, GREENSBURG, INDIANA 47240

1/2" & 3/4" Hand-Held Shower Installation



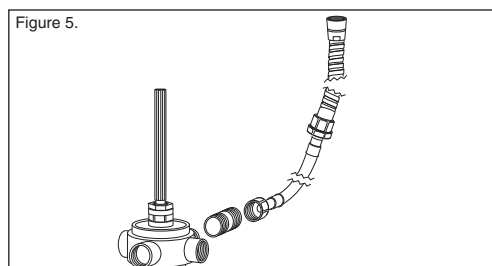
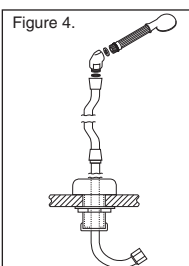
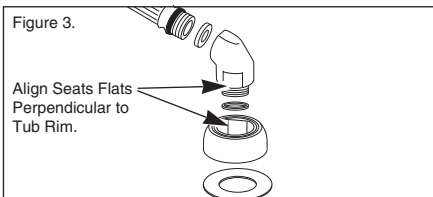
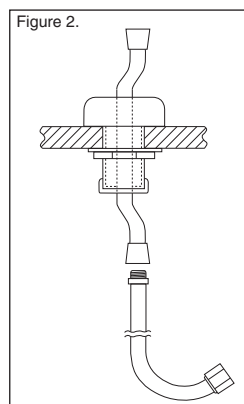
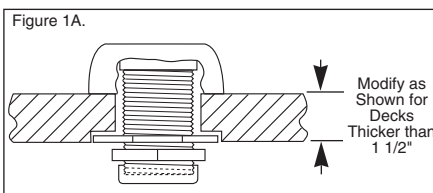
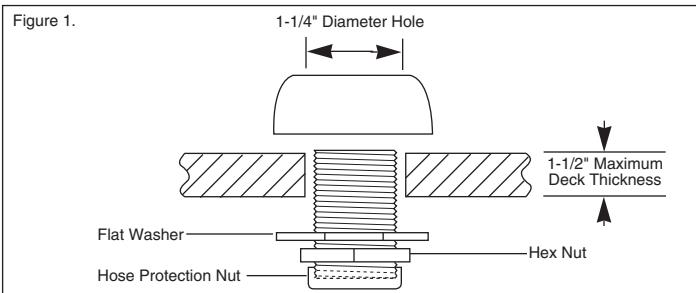
INSTALLATION INSTRUCTIONS FOR HAND HELD SHOWERS.

IMPORTANT: Use plumber tape on all threaded connections.

INSTALLATION INSTRUCTIONS

Supply valve installation: Water supply is through diverter.

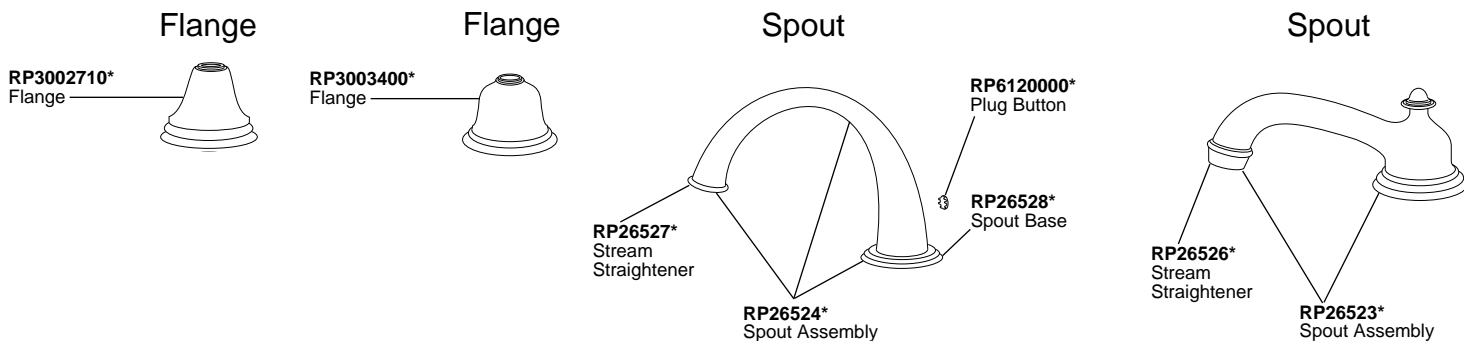
1. Install hose guide assembly on finished deck as shown in Figure 1. See Figure 1A & Figure 3 for additional information on hose guide installation.
2. Slide flexible metal hose through hose guide assembly and attach to 30" metal braided hose as shown in Figure 2.
3. Attach hand held showerhead unit to the end of the flexible metal hose as shown in Figure 4.
4. Attach the end of the metal braided hose to the diverter as shown in Figure 5.



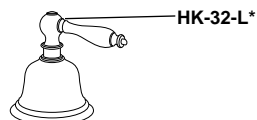
HOW TO CARE FOR YOUR BEAUTIFUL FAUCETS!

We suggest the following minimum maintenance for maximum enjoyment and use of your faucets.

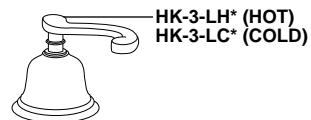
All brass parts have been carefully finished and protected with Artistic Brass' exclusive Marine™ Protective Finish before leaving the factory. After each use, wipe the fitting gently with a damp cloth and blot dry with a soft towel. It is particularly important not to let water stand where the faucet contacts the counter, tub deck, or finished wall. Use only mild soap and water to clean your faucet. **NEVER USE ACIDS, HARSH ABRASIVES, OR DETERGENTS.** Failure to comply with these maintenance instructions may void the warranty.



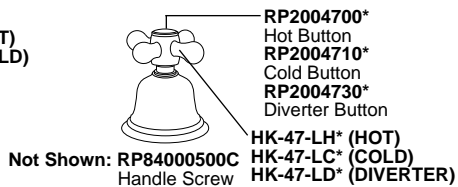
32 Series Handle



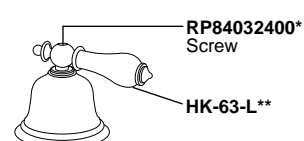
34 Series Handle



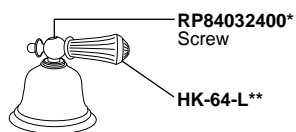
47 Series Handle



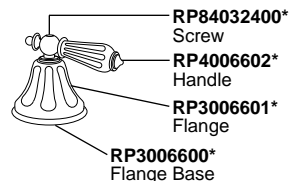
63 Series Handle



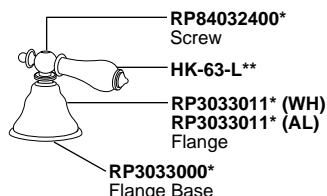
64 Series Handle



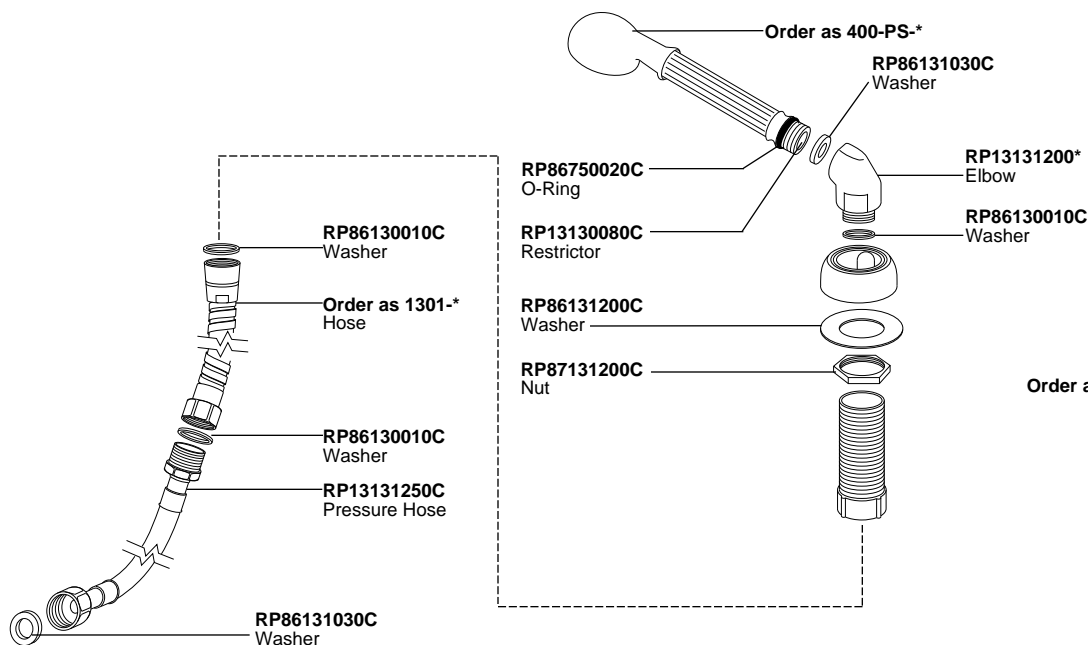
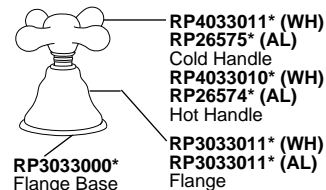
66 Series Handle



68 Series Handle



330 Series Handle



SPECIFY FINISH WHEN ORDERING REPLACEMENT PARTS.

*FINISH

AB=ANTIQUE BRASS, PB=POLISHED BRASS, PC=POLISHED CHROME

FOR HK-63 & 330-PS **

AB-AL=ANTIQUE BRASS & ALMOND, AB-WH=ANTIQUE BRASS & WHITE, PB-AL=POLISHED BRASS & ALMOND, PB-WH=POLISHED BRASS & WHITE, PC-AL=POLISHED CHROME & ALMOND, PC-WH=POLISHED CHROME & WHITE