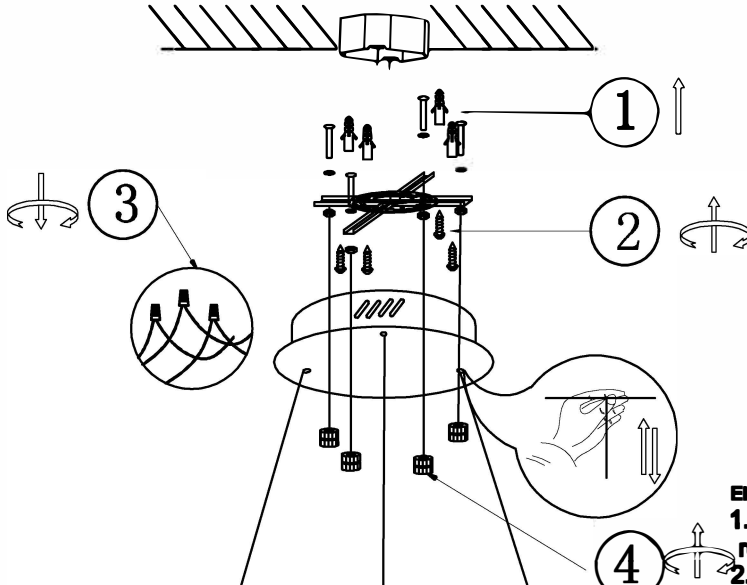
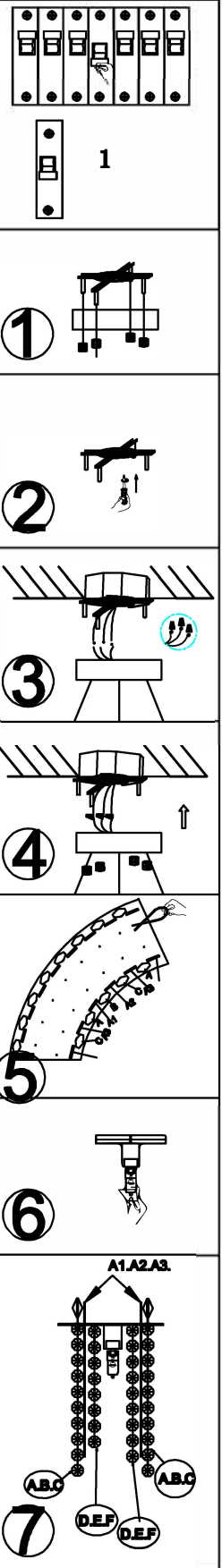


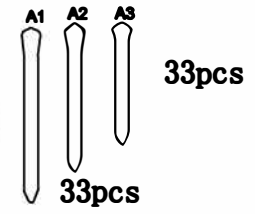
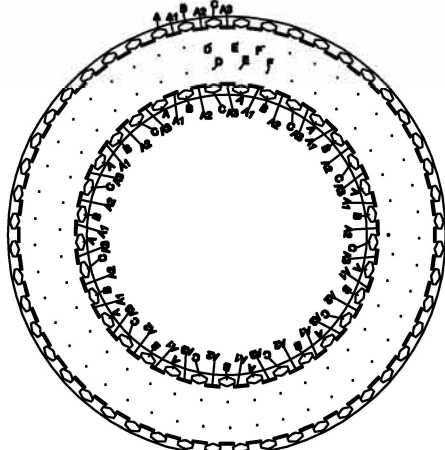
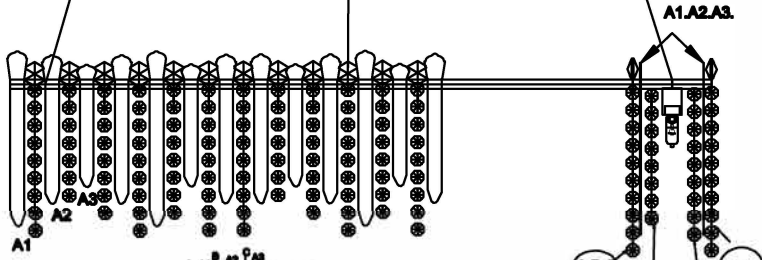
Assembling Instruction



Ensure mains supply is switched off.

1. Unscrew canopy caps and remove mounting bracket.
2. Fix mounting bracket to junction box with screws.
3. Connect main supply wires to terminal block, ensuring all connections are tight.
3. Screw the lamp to the mounted lamp hanging panel.
4. Fix canopy onto mounting bracket and secure with caps.
6. Insert Crystal Hanging Needle.
7. Max 40w with G9bilb installed.
8. Hang the crystals and decorative pieces in the order shown in the diagram

Warm prompt:
The height of the lamp can be adjusted to be 30 inches to 75 inches.



A.	24#*1+14#*10	33
B.	24#*1+14#*9	33
C.	24#*1+14#*8	33
D.	14#*10	34
E.	14#*9	34
F.	14#*8	34