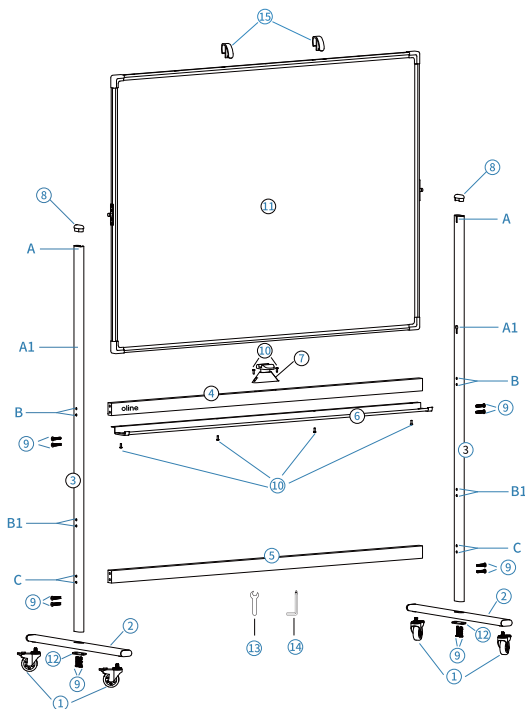


MOBILE WHITEBOARD USER MANUAL

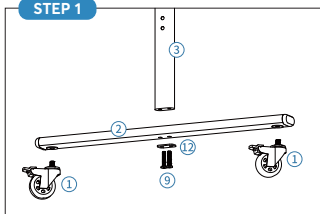


PARTS LIST

PART NUMBER	PART NAME	UNITS	PART NUMBER	PART NAME	UNITS
1	Caster Wheel	4	9	M6*35mm Screw	12
2	Foot Tube	2	10	M4*12mm Screw	6
3	Column	2	11	Whiteboard	1
4	Upper Crossbar	1	12	Gasket	2
5	Lower Crossbar	1	13	Wrench	1
6	Marker Holder	1	14	Allen Key	1
7	Flipper	1	15	Flip Chart Holder	2
8	Cap	2			

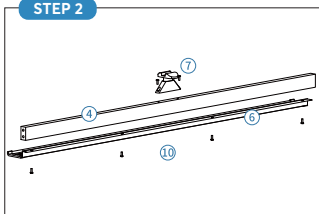
INSTALLATION STEPS

STEP 1



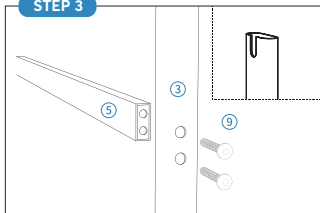
Install the Caster Wheel (1) into the Foot Tube (2), and connect the Foot Tube (2) to the Column (3) with M6*35mm Screws (9) and Gasket (12)

STEP 2



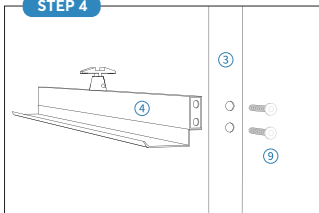
Install the Flipper (7) and Marker Holder (6) to Upper Crossbar (4) with M4*12mm Screws (10)

STEP 3



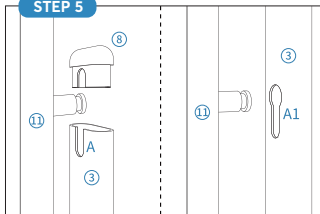
Install the Lower Crossbar (5) and Column (3) with M6*35mm Screws (9) (notice the "U" grooves are facing inward)

STEP 4



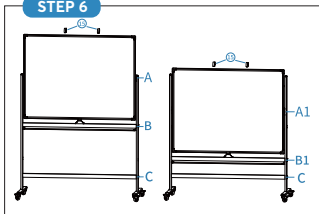
Install the Upper Crossbar (4) and Column (3) with M6*35mm Screws (notice the "U" grooves are facing inward)

STEP 5



Put the Whiteboard (11) into the "U" grooves of Column (3), then insert into the Caps (8), there are A position and A1 position for customer selection.

STEP 6



Attach the Flip Chart Holder (15) on the frame of Whiteboard (11) for flipchart use.