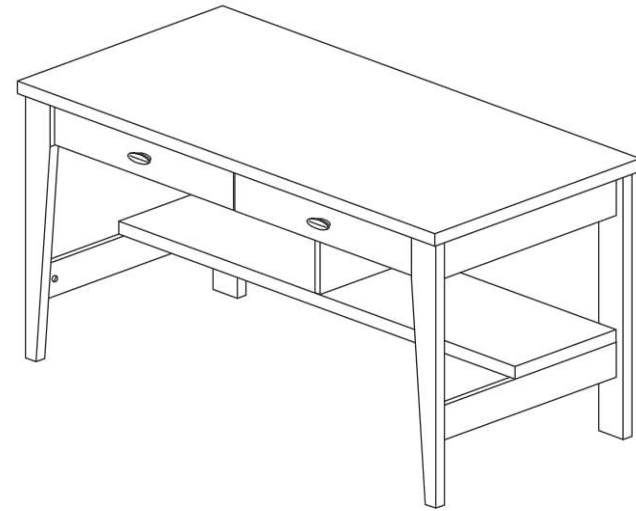


Limited 1-Year Parts Warranty

1. The warranty is a consumer warranty and applies only to products manufactured or distributed by us.
2. The warranty period is from the verified purchased date of the product. The warranty is expressly limited to the replacement of components having manufacturer defects only and on current available models. No assembly labor is included. Possible replacement of components or parts does not extend this limited warranty or begin a new warranty period.
3. Our products are warranted to the original purchaser and are not transferable. The warranty is limited to defects in manufacturing, materials, and workmanship. This warranty does not apply to normal wear and tear. If the product has been subject to abuse, misuse, improper care or use of the product, the warranty is void.
4. The consumer has purchased this as a "Ready-To-Assemble" product, which involves "Do-it-yourself", assembly, including: handling, transporting, assembling and erecting the product.
5. This warranty includes any statutory legislation in the jurisdiction where the product is purchased and does not exclude or limit your legal right.
6. Warranty period to be verified by date of manufacturing and original/receipt of sale.



**DO NOT RETURN IT TO THE STORE!
CALL US FIRST!**

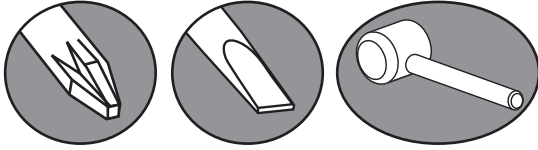
After hours, leave a message or email
and our in house customer service team will respond
the next business day for you:

**REPLACEMENT PARTS
ASSEMBLY QUESTIONS
PRODUCT INQUIRIES**

Pièces de rechange questions
de montage renseignements sur les
produits

Piezas de repuesto asamblea
de preguntas producto de
investigaciones

**TOOLS REQUIRED
OUTILS REQUIS
HERRAMIENTAS REQUERIDAS**



**TWO PEOPLE REQUIRED FOR
ASSEMBLY**

**DEUX PERSONNES REQUISES
POUR L'ASSEMBLÉE**

**VDOS PERSONAS
REQUERIDAS PARA
LA ASAMBLEA**



17



If you are to use any form of electrical drill, please have the torque at a **LOW** setting.
Si vous utilisez une perceuse électrique pour visser, régler-la à une basse vitesse.
En caso de usar una broca eléctrica, asegúrese de ponerla en una posición lenta.



Read this assembly manual carefully, and verify that you have all the parts listed before you begin. Keep your assembly manual for future reference.

Lisez ce manuel de montage soigneusement. Soyez sûr que vous avez toutes les pièces d'équipement avant de commencer. Gardez ce manuel de montage pour futur référence.

Lea cuidadosamente todo el manual de ensamblaje. Asegúrese de tener todas las partes que vienen enlistadas en el manual de montaje. Guarde este manual para referencias futuras.



Do not place heated objects on top of any surface. Always use a coaster or mat. Never leave liquids on the surface: Clean immediately with a mild cleaner and a damp cloth. Do not use wax or polish.

Jamais mettre des objets chauds ou des liquides sur les surfaces peintes. Utilisez un dessous de verre. Lavez avec un détergent doux et un tissu humide. N'utilisez pas des cires ou vernis.

No ponga objetos calientes, ni líquidos, arriba de cualquier superficie, siempre use algún protector. Limpiece ligeramente con tela húmeda. Nunca use cera o lustre para limpiar la superficie.



Protect finishes by placing furniture pieces on a soft carpeted surface during assembly.
Protégez la finition en plaçant les pièces du meuble sur un tapis doux pendant l'assemblage.
Proteja fines colocando pedazos de muebles en un suave alfombraron superficie durante la asamblea.



DO NOT ASSUME CHILD SAFETY WITH ANY PIECE OF FURNITURE!

Do not allow children to climb on dressers or in drawers. Do not stand or jump on beds. Improper use can cause death and or serious injury. If you are placing a TV on top of dressers use safety straps provided with your TV to prevent the risk of a toppling television. Furniture straps fastened to a wall can also be used to help ensure safety. Damaged parts or furniture put together incorrectly can lead to serious injuries. Make sure to follow instructions correctly.



N'assumez pas la sécurité des enfants avec n'importe quel meuble ou pièce.

Ne permettez pas aux enfants de grimper sur les meubles ou les tiroirs. Ne pas se tenir debout ou sauter sur le lit. L'utilisation inexacte peut causer des blessures sévères ou fatales. Si vous placez votre téléviseur au dessus du meuble assurez-vous d'utiliser les lanières de sécurité (inclus avec votre téléviseur) pour prévenir le risque de basculer le téléviseur. Les lanières de sécurité pour meuble fixées au mur peuvent aider à assurer la sécurité.

Des pièces endommagées ou un meuble assemblé incorrectement peut mener à des blessures. Assurez-vous de bien suivre les instructions.



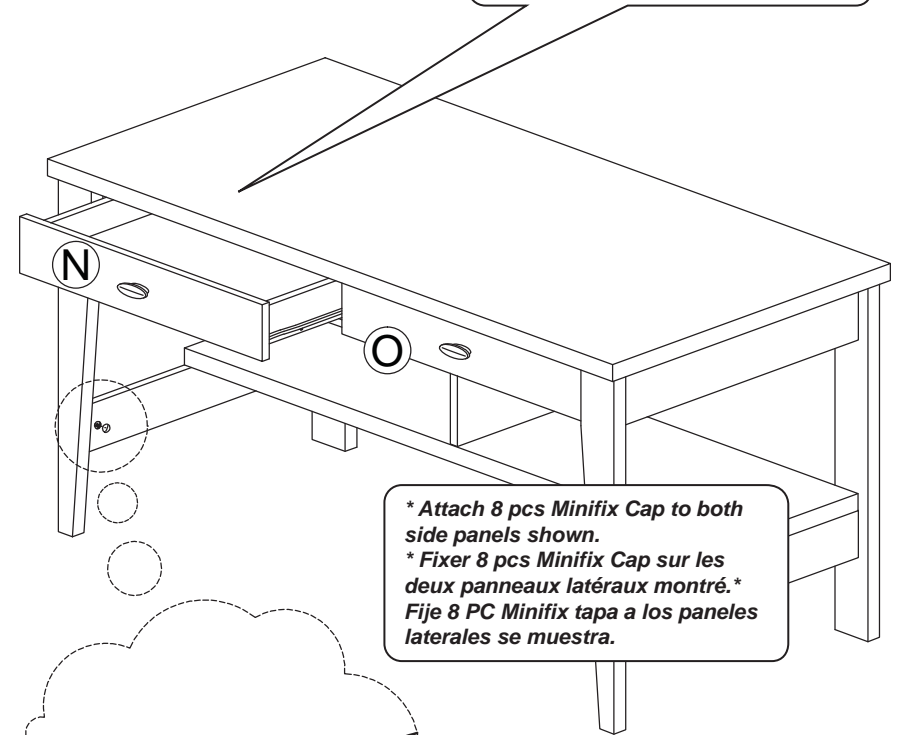
¡No ASUMA a NIÑO SEGURIDAD con cualquier MUEBLE!

No permita a niños para subir en tocadores ni en gavetas. No pases ni salte en camas. El uso impropio puede causar la muerte y o herida grave. Si usted coloca una televisión encima de tocadores utiliza correas de seguridad proporcionados con su televisión para prevenir el riesgo de una televisión que derriba. Las correas de muebles abrocharon a una pared también puede ser utilizado para ayudar a asegurar la seguridad. Las partes o los muebles dañados ponen juntos puede llevar inexactamente a heridas graves. Asegúrese para seguir instrucciones correctamente.

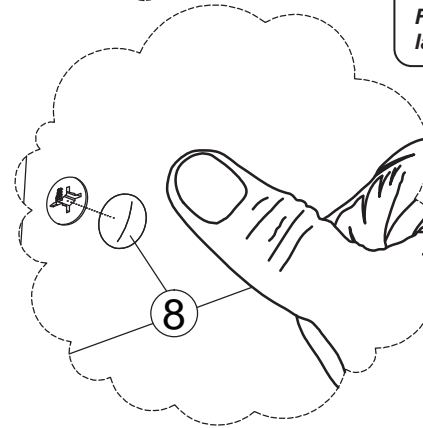
** Place both drawers into desk as shown.*

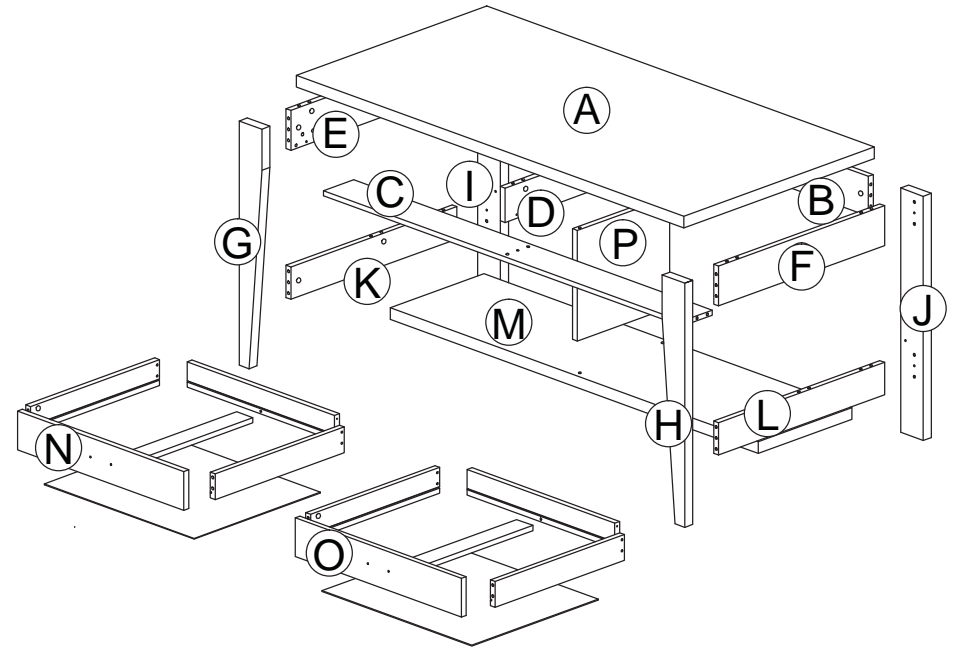
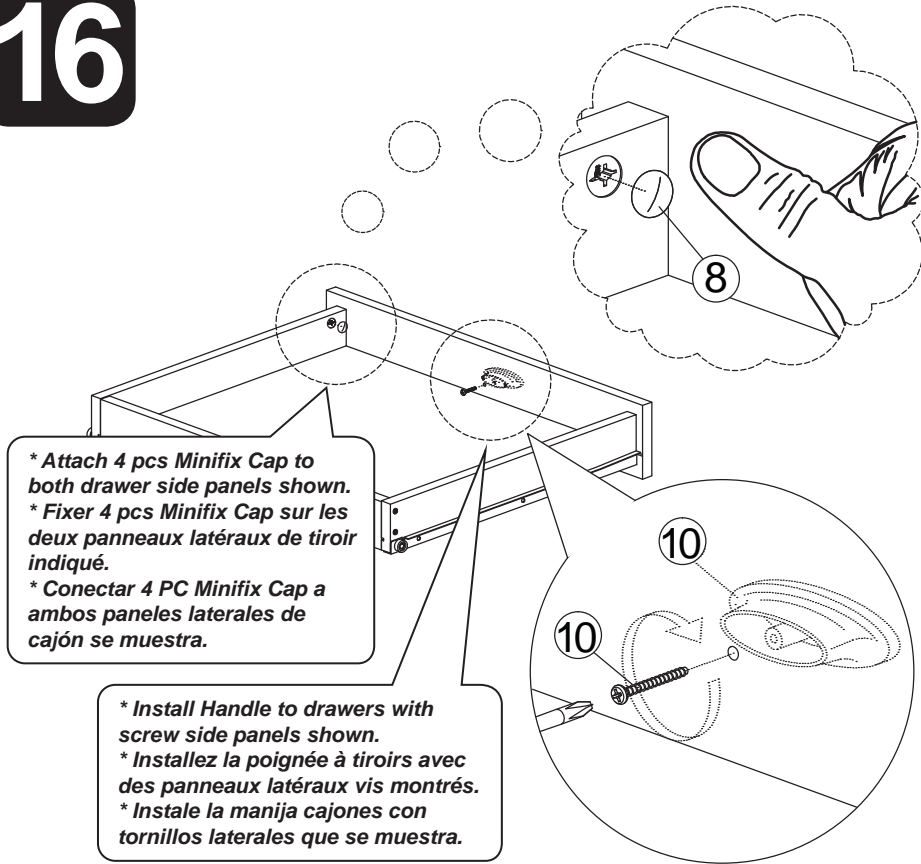
** Placer les deux tiroirs dans le bureau, tel qu'illustré.*

** Coloque ambos cajones mesa como se muestra.*

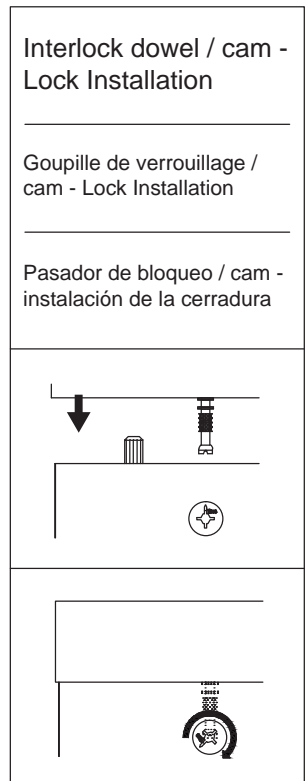


** Attach 8 pcs Minifix Cap to both side panels shown.
* Fixer 8 pcs Minifix Cap sur les deux panneaux latéraux montré.*
Fije 8 PC Minifix tapa a los paneles laterales se muestra.*



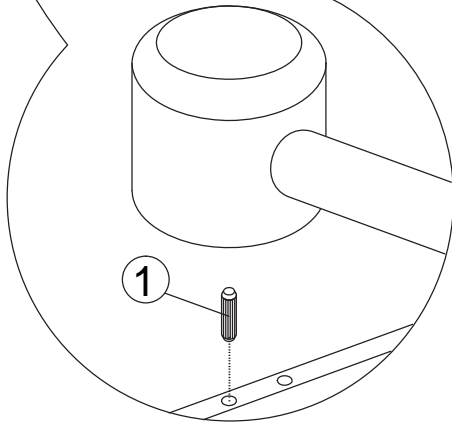
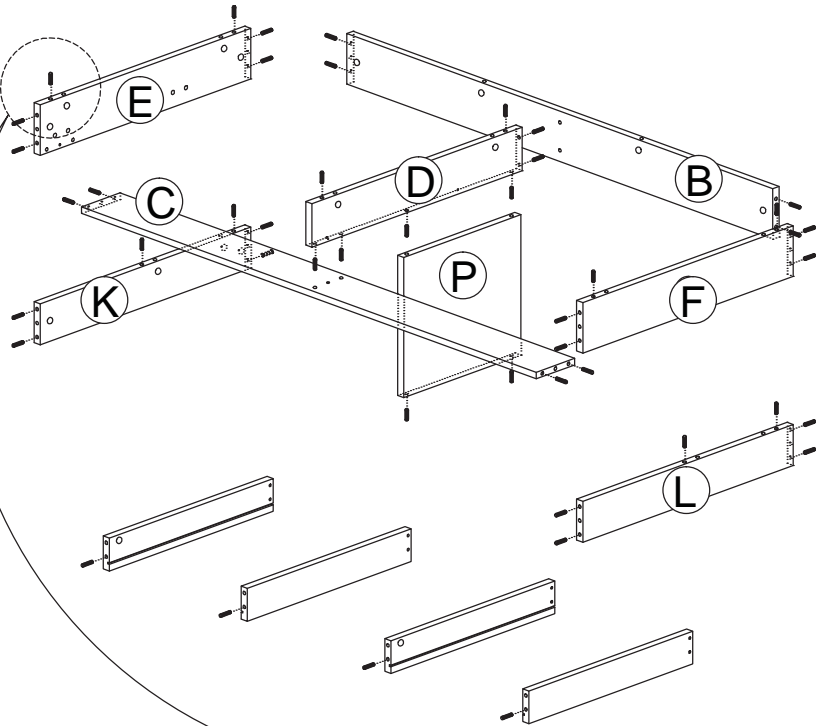


Hardware List / Liste du matériel / Lista de hardware			
No.	SHAPE	DESCRIPTION	Qty.
1		8x25mm Wood Dowel	46Pcs
2		M5x8mm Screw (Euro Screw)	8Pcs
3		M3.5x16mm Screw	16Pcs
4		M4x38mm Screw	11Pcs
5		M4x45mm Screw	2Pcs
6		15MM Titus Mini Fix	30Sets
7		Nail Leg	4Pcs
8		15mm Minifix Cap	12Pcs
9		Drawer Slide = 400mm	2Sets
10		Handle (P058) = Plastic Handle Screw M3.6x24mm	2Sets
11		PVC Drawer Pin (35mm)	4Pcs

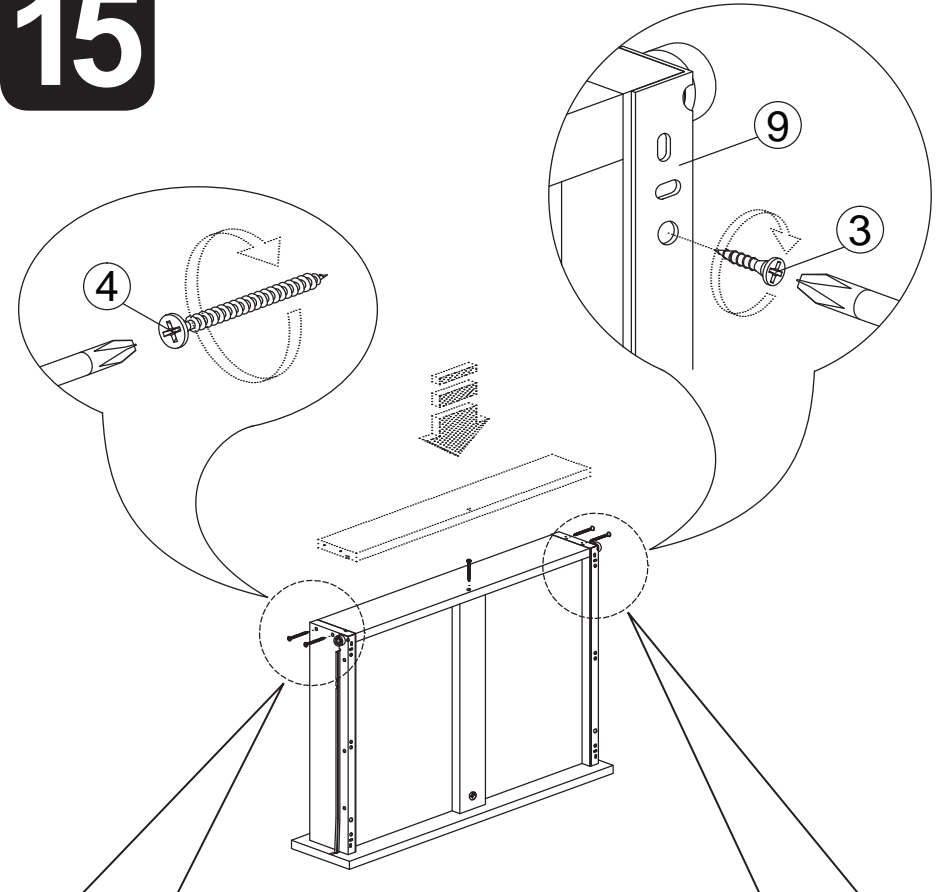


1

** Install 46 pcs Wood Dowel into all panels as shown.
* Installer 46 pcs cheville en bois dans tous les panneaux, comme illustré.
* Instale 46 PC pasador de madera en todos los paneles como se muestra.*



15

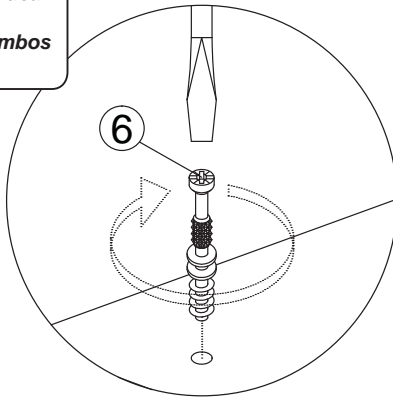
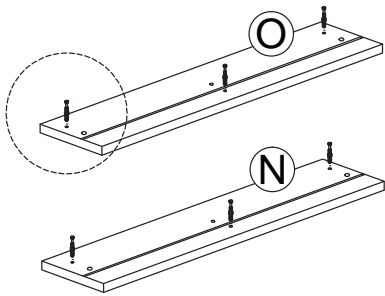


** Insert drawer back, secure with screws as shown.
* Insert arrière de tiroir, fixer avec les vis, comme indiqué.
* Inserte el cajón detrás, fije con tornillos como se muestra.*

** Insert drawer slide with screw as shown.
* Insérer la coulisse de tiroir avec vis comme indiqué.
* Insertar diapositiva del cajón con el tornillo como se muestra.*

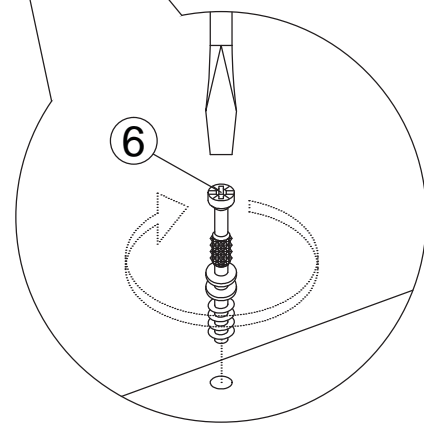
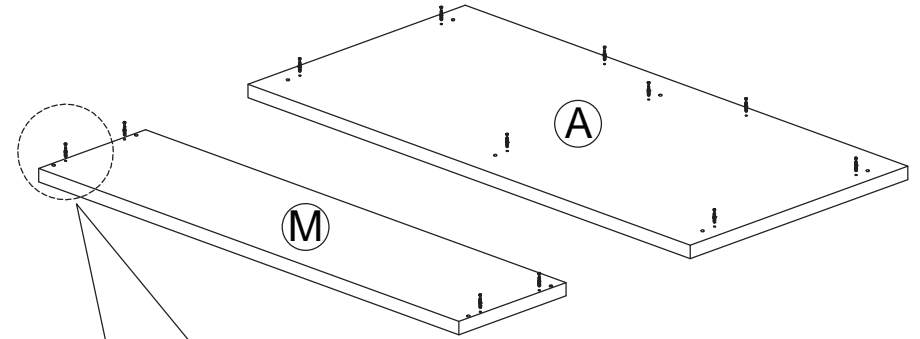
13

* Install 6 pcs Minifix Bolt to both panels as shown.
 * Installer 6 pcs Bolt Minifix les deux organes, tel qu'illustré.
 * Instale 6 PC perno Minifix a ambos paneles, como se muestra.

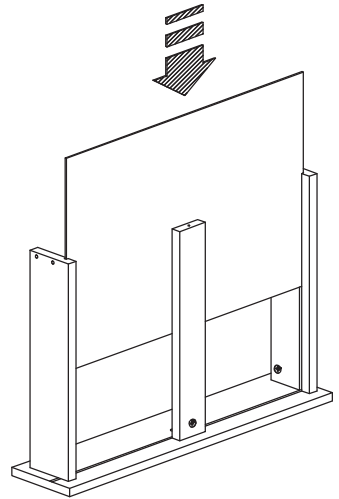
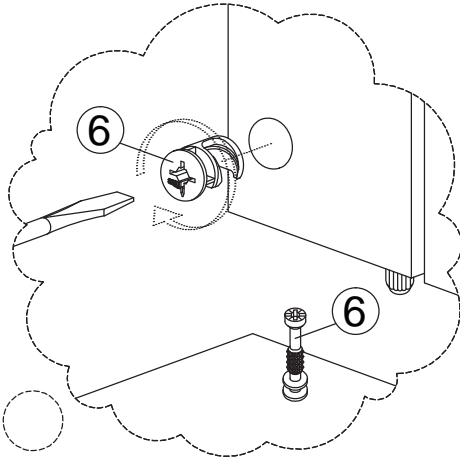
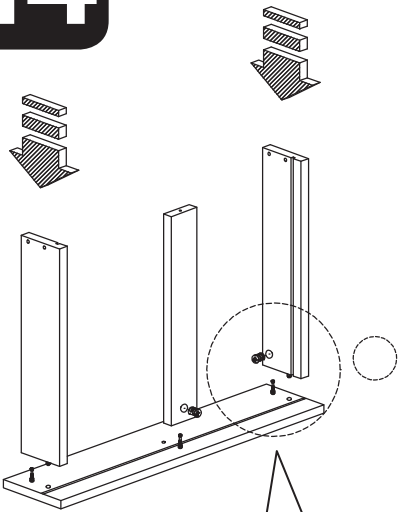


2

* Install 12 pcs Minifix Bolt to both panels as shown.
 * Installer 12 pcs Bolt Minifix les deux organes, tel qu'illustré.
 * Instale 12 PC perno Minifix a ambos paneles, como se muestra.



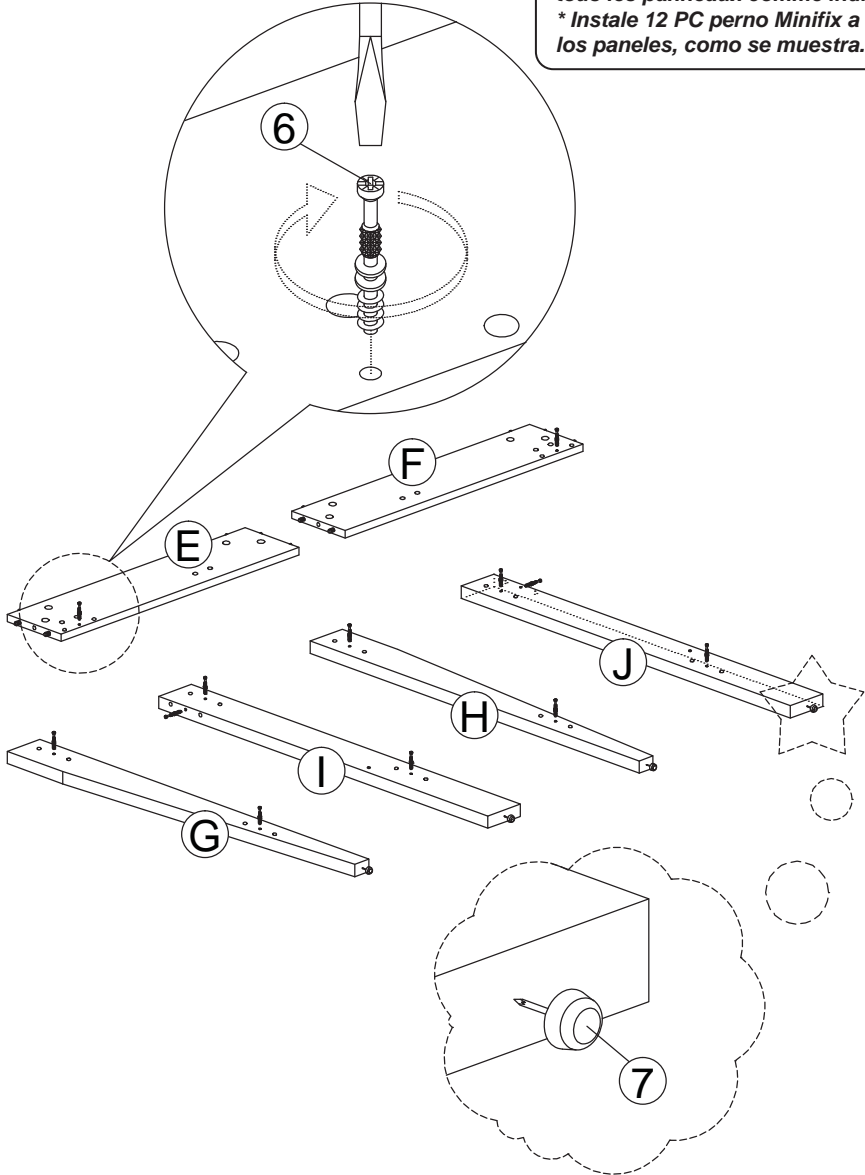
14



* Assemble drawer panels, secure with Minifix as shown.
 * Assembler les panneaux de tiroir, sécurisés avec Minifix tel qu'illustré.
 * Montar paneles de cajón, seguros con Minifix como se muestra.

3

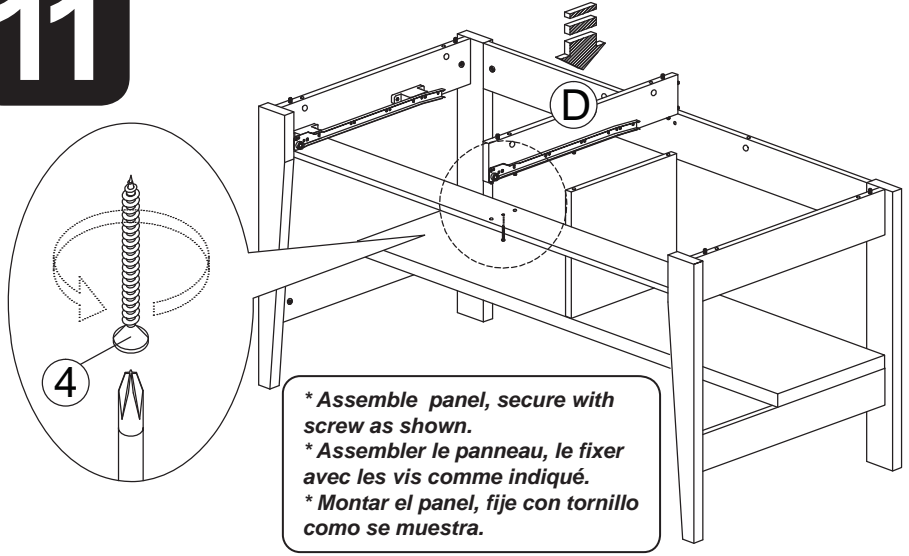
* Install 12 pcs Minifix Bolt to all panels as shown.
 * Installer 12 pcs Minifix boulon à tous les panneaux comme indiqué.
 * Instale 12 PC perno Minifix a todos los paneles, como se muestra.



* Attach Nail Leg to all panels as shown. (Star bubble)
 * Accrocher jambe d'angle sur tous les panneaux comme indiqué. (Bubble star)
 * Instale clavos pierna todos los paneles como se muestra. (Estrellas de la burbuja)

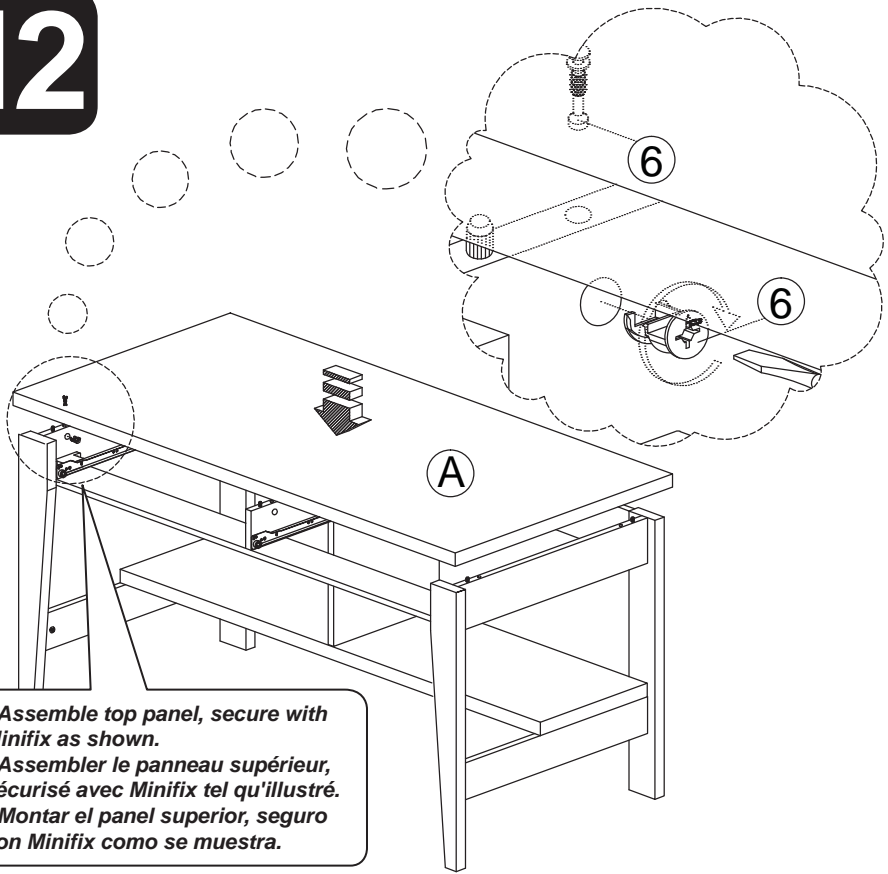
11

* Assemble panel, secure with screw as shown.
 * Assembler le panneau, le fixer avec les vis comme indiqué.
 * Montar el panel, fije con tornillo como se muestra.



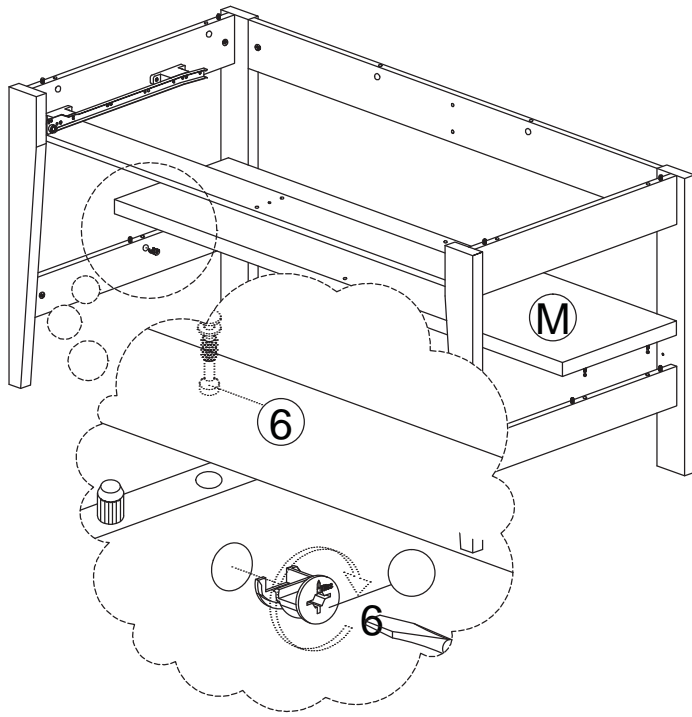
12

* Assemble top panel, secure with Minifix as shown.
 * Assembler le panneau supérieur, sécurisé avec Minifix tel qu'illustré.
 * Montar el panel superior, seguro con Minifix como se muestra.

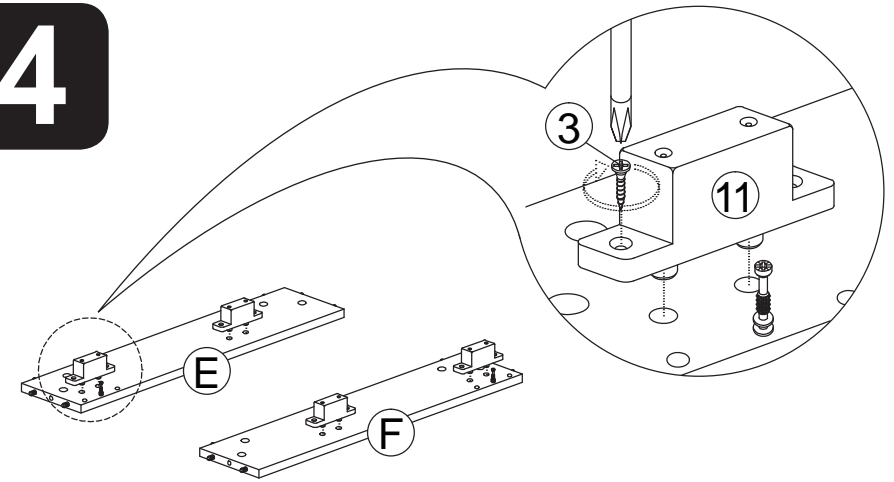


9

- * Place bottom panel, secure with Minifix as shown.
- * Placer le panneau inférieur, sécurisé avec Minifix tel qu'illustré.
- * Coloque la panel inferior, seguro con Minifix como se muestra.



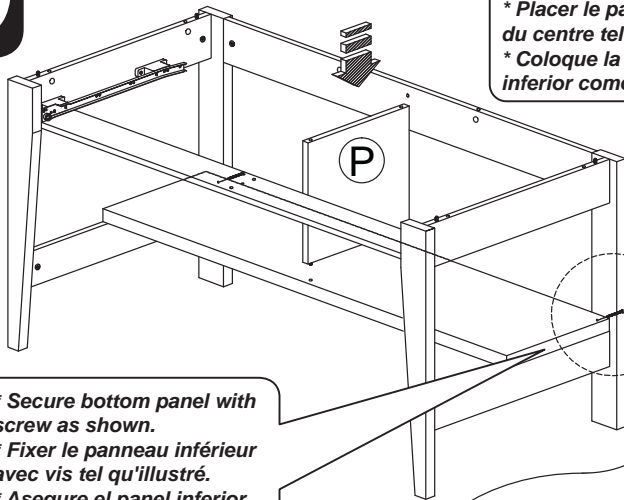
4



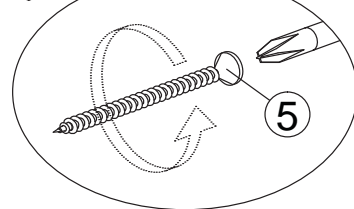
- * Install 4 pcs Drawer Pin to both side panels with screw as shown.
- * Installer 4 pcs tiroir Pin sur les deux panneaux latéraux avec vis, comme indiqué.
- * Instalar 4 PC cajón Pin a ambos paneles laterales con tornillos como se muestra.

10

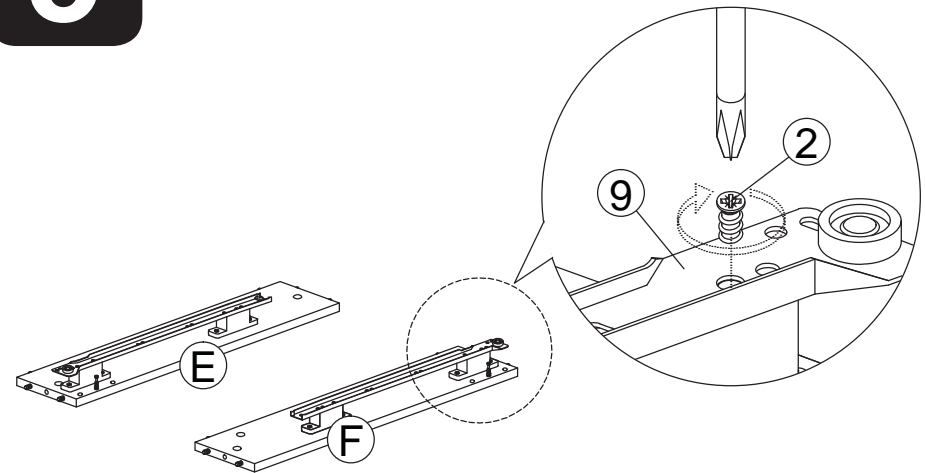
- * Place lower center panel as shown.
- * Placer le panneau inférieur du centre tel qu'illustré.
- * Coloque la panel central inferior como se muestra.



- * Secure bottom panel with screw as shown.
- * Fixer le panneau inférieur avec vis tel qu'illustré.
- * Asegure el panel inferior con tornillo como se muestra.



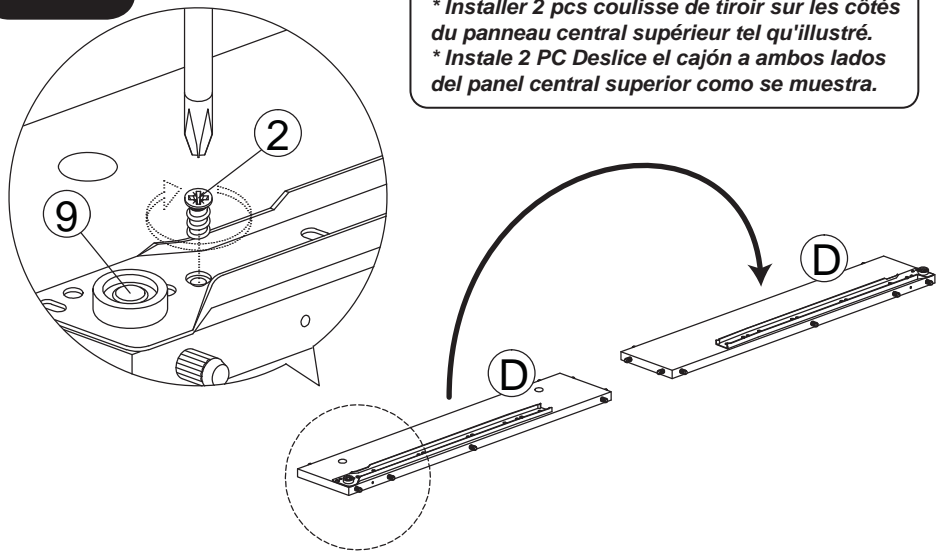
5



- * Install 2 pcs Drawer Slide to both side panels as shown.
- * Installez 2 pcs coulisse de tiroir sur les deux panneaux latéraux, comme illustré.
- * Instale 2 PC cajón Deslize ambos paneles laterales como se muestra.

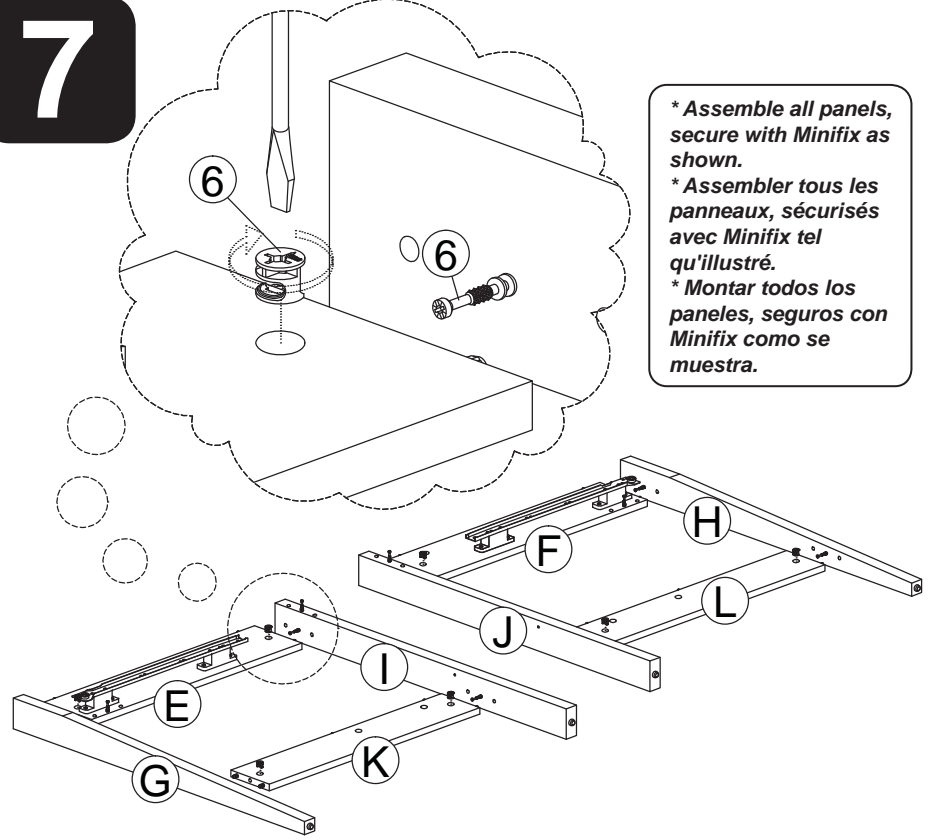
6

* Install 2 pcs Drawer Slide to both sides of upper center panel as shown.
 * Installer 2 pcs coulisse de tiroir sur les côtés du panneau central supérieur tel qu'illustré.
 * Instale 2 PC Deslice el cajón a ambos lados del panel central superior como se muestra.



7

* Assemble all panels, secure with Minifix as shown.
 * Assembler tous les panneaux, sécurisés avec Minifix tel qu'illustré.
 * Montar todos los paneles, seguros con Minifix como se muestra.



8

* Assemble all panels, secure with Minifix as shown.
 * Assembler tous les panneaux, sécurisés avec Minifix tel qu'illustré.
 * Montar todos los paneles, seguros con Minifix como se muestra.

