

Item No 704 21.6.26
142X210MM A5 铜版纸

3. WARNING:



Adult supervision required to reduce the risk of injury. Strictly forbidden to use on roadways, near motor vehicles, slopes or swimming pools and areas where there is water.
Please wear shoes when operating vehicle.
Can only be used by one person at a time.
Keep away from children before assembled as there may be sharp edges points or small parts.
Adult assembly required.
A reminder that the toy should be used with caution since skill is required to avoid falls or collisions causing injury to the user or third parties.



Do not mix alkaline battery, standard (carbon-zinc) battery or rechargeable (nickel-cadmium) battery.



Protective equipment should be worn. Not to be used in traffic.



This product is not suitable for children under 3 years of age due to its maximum speed.

IX. Care and Maintenance

- 1) Regularly wipe and clean it with a piece of cloth.
- 2) The rotating parts of the car should be checked regularly to determine whether any foreign matter obstructs the rotation and to keep lubricating state of normal operation.



Item No: 704
Electric Ride-On

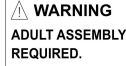
Installation & operation Manual



www.tobbi.com



CAUTION:
• This package contains small parts.
• Adult assembly required.
• Verify all screws, bolts and package items prior to giving to children.
• Protective equipment recommended.
• Not to be used in traffic.
• Keep this instructions for future reference.



**WARNING
ADULT ASSEMBLY
REQUIRED.**

"Mercedes-Benz" and the design of enclosed product are subject to intellectual property protection owned by Daimler AG. They are used by Ningbo Prince Toys Co., Ltd. under license.

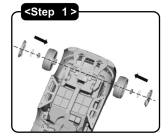
I. SPECIFICATIONS.

MODEL	2WD
Suitable Ages	3-8 years
Product Dimensions	107x62.5x44 cm
Maximum Weight	30 kgs
Speed	3-5km/h
Motor	30W
Charger	DC12V500mA
Battery	6V4.5AH
Operating Ambient Temperature	0-40°C

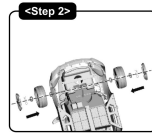
II. Components List.

1. Car body 1pc	2. Steering wheel 1pc	3. Seat 1pc
4. Windshield 1pc	5. Rear-view mirror 2pcs	6. Front wheel 2pcs
7. Rear wheel 2pcs	8. Wheel cap 4pcs	9. Cotter pin 5pcs (1 replacement piece)
10. Washer 2pcs (1 replacement piece)	11. Charger 1pc	

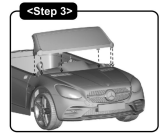
III. Assembly Instructions.



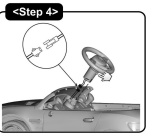
<Step 1>
for dual motors- Insert the two rear wheels, tighten using a washer and a cotter pin, then cover the wheel caps.



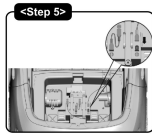
<Step 2>
Insert the two washers first together with the two front wheels, tighten using a washer and a cotter pin, then cover the wheel caps.



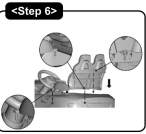
<Step 3>
Insert the windshield in the front of the car body, make sure it is firmly fixed.



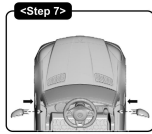
<Step 4>
Plug the wire plug and insert the connected plug into the hole of the car body. Press the button and insert the steering wheel.



<Step 5>
Insert the RED cable terminal into the battery positive pole.

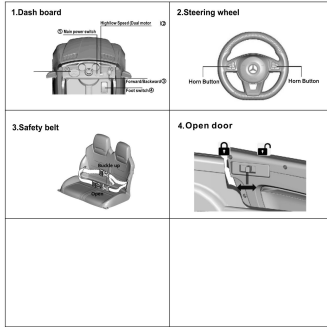


<Step 6>
Place the seat into the car body, then tighten by three screws with a screwdriver (not included).



<Step 7>
Insert the two rear-view mirrors into the car body, make sure it is firmly fixed.

IV. Function and Operation.



V. Charging the Drive Battery.

1. The charging socket is located at the lower part of the car seat.
2. Only battery and charger which are provided or recommended can be used only.
3. Please do not play with the charger and battery because they are not toys.
4. The battery charging operation is to be carried out only by adults.
5. The battery shall be fully charged before the use. The battery charging time shall be 8-12 hours and cannot exceed 24 hours.
6. It is normal for battery and charger to feel warm during charging.



VI. Simple Problem Diagnostic.

Defective conditions	Key points of inspection
1. The car can not be driven.	<ol style="list-style-type: none"> 1) Ensure the power switch, all plugs of the controller under the seat, and the battery terminal are properly working. 2) Ensure the car system properly when the car is user loaded or blocked, the user should check automatically disconnect the circuit to protect the motor and controller. 3) Check whether the car has been stored for a long time and its battery is not charged on time.
2. sound is distorted or silent	Check whether the battery has enough power, otherwise charge fully.

VII. WARNING.

1. Battery warning:

- 1) When storing the car for long period of time, charge the battery until full then turn off the power switch. The battery should be recharged once every month, or may otherwise have a shorter life span and risk deteriorating.

2. Product warning:

- 1) There may be potential sharp edges, sharp points or small parts before the assembly of this product, and therefore this product shall be assembled by the adult.
- 2) To avoid suffocation, keep the plastic bag away from children. Dispose of all bags immediately.
- 3) Children shall use the car under adult guidance and supervision to prevent risk of injury.
- 4) The car is suitable for being driven on the flat ground and strictly prohibited to be driven in dangerous places such as public roads, slope and near swimming pool to prevent traffic and drowning accidents.
- 5) Please put on shoes and take protective measures before use, such as fastening the safety belt and putting on the helmet, gloves, knee pads, etc.
- 6) Not suitable for children under 36 months as parts may fall off when used improperly.
- 7) Regularly check whether the battery, charger, wire, plug, casing and other parts are damaged. If the damage occurs, please cease to use this product until it has been repaired.
- 8) This product is only allowed to be used by a child the maximum age is 80kg, over 10 is not allowed.
- 9) Keep away from fire.
- 10) The product instructions shall be kept as they contain important information.