

INSTALLATION GUIDE

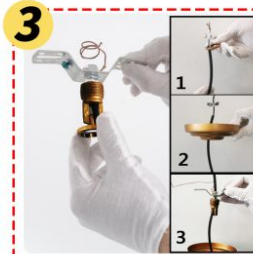
8873



All accessory parts



Pass wire go through lamp frame, then screw the loop for fixing the bulbs fixture body.



Unscrew the collar, then install the canopy and collar according to above steps.



Please check the accessory parts are placed in the correct position.



Fix the mounting bracket on the electrical box.



Connect the wire.



Screw the collar for fixing the canopy.



Screw 3 E12 bulbs, the light fixture is ready to use. (Bulb is not included)



Complete installation

GAUTION

• TO AVOID THE RISK OF FIRE OR SHOCK, FIXTURE MUST BE INSTALLED IN COMPLIANCE WITH ALL APPLICABLE NATIONAL AND LOCAL ELECTRICAL/BUILDING CODES.

• DISCONNECT POWER BEFORE RELAMPING OR WIRING THE FIXTURE.

• If an existing fixture is being replaced, remove it and note to which of the wires in the outlet box the fixture was attach.

• DO NOT SEPARATE AND OTHER WIRES THAT WAY BE IN THE BOX. DO NOT DAMAGE THE INSULATION OF OLDER WIRING.

• In regular circumstances the Black wire will be the "Hot" lead wire and the WHITE wire will be the "Neutral" or "common" lead wire.

• A GREEN or BARE COPPER wire is the "Ground". In order buildings it is always good practice to reconfirm the polarity of the wiring.

NOTE: For your safety be certain that the circuit breakers controlling outdoor lighting and equipment are GFI breakers.