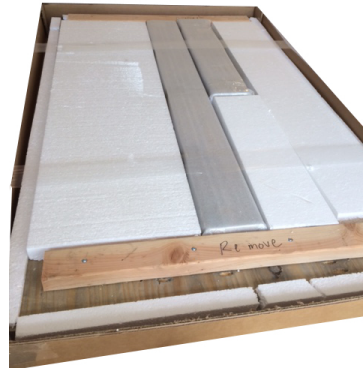


Table Assembly Instructions

Step One

Use the provided tool (#2, 6" square drill tip) to remove packing blocks. Packing blocks are there to protect the table during shipping and are no longer needed.



Step Two

Place provided dowel pins in the holes located near the ends of each apron piece.

Opposing holes for these dowels are located on the bottom of the table top. Align the apron, and put into place. Repeat for 3 remaining sides.

Secure the apron pieces to the table top with the screws and hardware provided.

* If using a power tool to assemble, be careful not to over tighten as this may cause damage to the table. All holes are pre-drilled for ease and convenience.



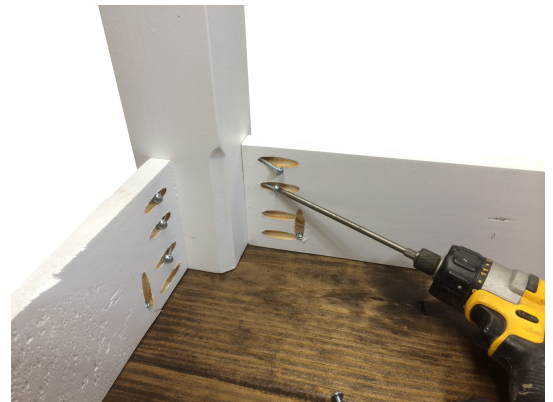
Step Three

Align legs flush against apron.

The pre-drilled holes on the legs should be facing inward.

Use the enclosed hardware and screws to attach the legs as shown in the photo. Repeat process for remaining sides.

*Be careful not to over tighten the screws. This may cause the wood to crack.



Note:

Real wood expands and contracts, so the legs have adjustable felt feet. You may need to adjust seasonally so the table may sit flat on even or uneven surfaces such as tile floors. Simply turn them left to increase the leg height, or right to lower it.

