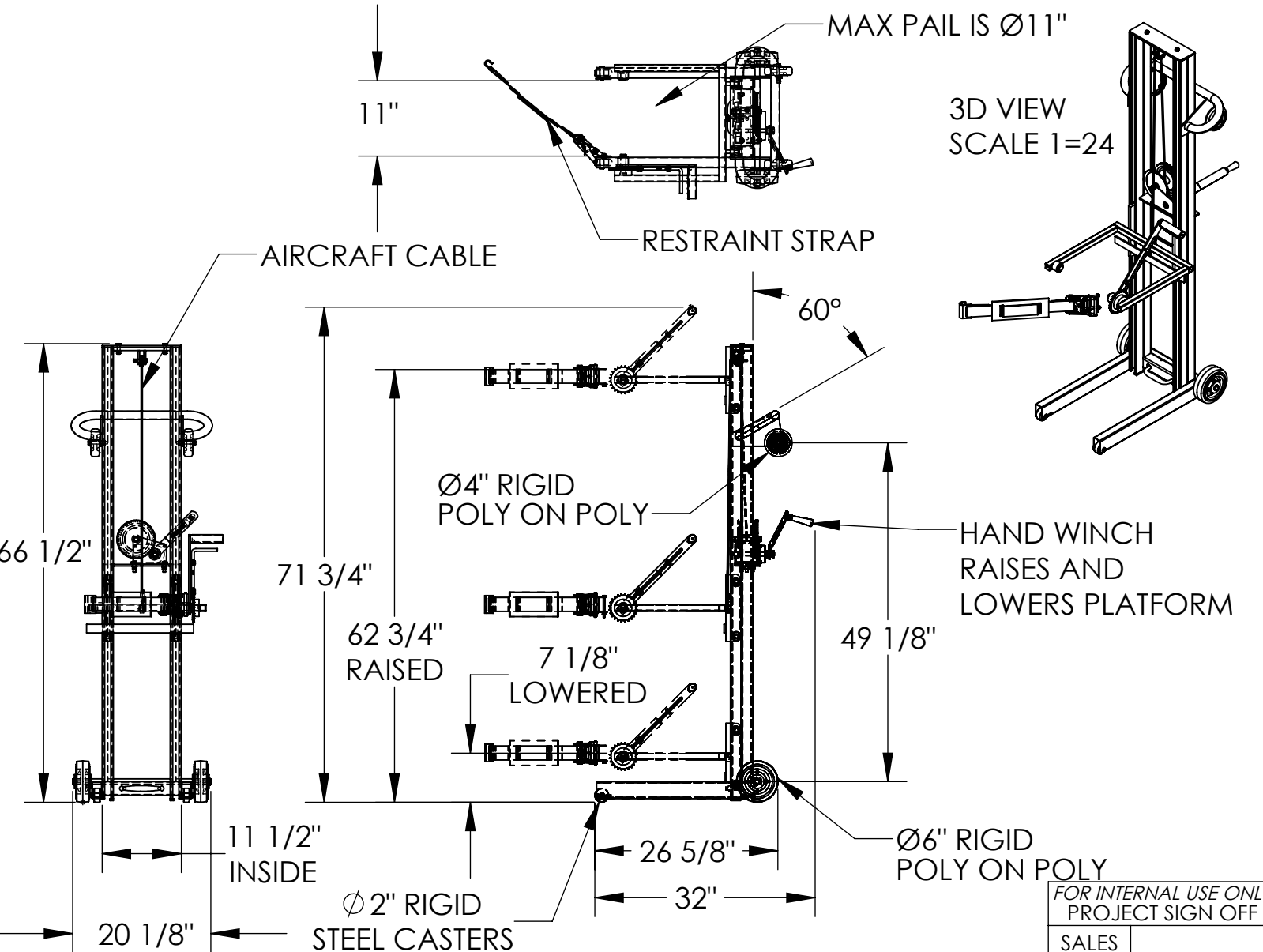


VARIABLE HEIGHT PAIL DISPENSER - LLW-PAILD-200

APPROX WEIGHT: 136.79 lbs.
DOES NOT INCLUDE WEIGHT OF POWER OR PACKAGING!!!

ANY ADDITIONS, DELETIONS, OR OMISSIONS MUST BE CORRECTED ON THIS DRAWING AS THIS DRAWING WILL BE CONSIDERED ALL INCLUSIVE



ALL GRAPHICS PROVIDED ARE FOR REFERENCE ONLY. IF CERTAIN DIMENSIONS ARE CRITICAL PLEASE VERIFY THOSE DIMENSIONS WITH YOUR SALESPERSON

DIMENSION TOLERANCE +/- 1/4"

STANDARD FEATURES

MODEL NUMBER IS LLW-PAILD-200
STANDARD CAPACITY: 200 LBS
OVERALL WIDTH IS 20 1/8"
OVERALL LENGTH IS 32"
OVERALL HEIGHT IS 71 3/4"
Ø 6" X 2" POLY ON POLY REAR WHEELS
STANDARD Ø2" STEEL FRONT ROLLERS
CARRIAGE HAS A RESTRAINT STRAP FOR SECURING THE PAIL
FRAME HAS SPECIAL PUSH HANDLES TO HELP ASSIST IT BEING LOADED INTO A TRUCK OR VAN
STANDARD SERVICE RANGE IS 7 1/8" - 62 3/4"
TOUGH BAKED IN POWDER COAT YELLOW FINISH CRADLE & BLUE FOR THE FRAME

SPECIAL FEATURES NONE

FOR INTERNAL USE ONLY PROJECT SIGN OFF	
SALES	
ENG.	
FAB.	
POWER	

APPROVAL	I, THE UNDERSIGNED, AGREE THAT THE PRODUCT AS REPRESENTED SATISFIES DESIGN AND DIMENSION REQUIREMENTS. I ALSO ACKNOWLEDGE MY DUTY TO CONFIRM PRODUCT AND INSTALLATION COMPLIANCE WITH ALL APPLICABLE FEDERAL, STATE AND LOCAL REGULATIONS AND STANDARDS.	
	UNITS REQUIRING APPROVAL DRAWINGS OR MODIFIED ARE NON-RETURNABLE	
	[] As drawn [] As marked	
	Signed: _____ Date: _____	
	Printed Name: _____	
	LEAD TIME WILL START UPON RECEIPT OF SIGNED APPROVAL DRAWING	

DISTRIBUTOR'S NAME:		P.O.#
VESTIL MANUFACTURING		X
DRAWN BY: BLH		W.O.#
DATE: 1/3/17		X
REFERENCE: X	SCALE: 1:22	SALES: X
QUOTED LEAD TIME: X	QUOTE # X	FILE NAME:
		42-007-006