

Height Adjustable Flipper Desk

Product Numbers: 91186-A, 91186-B, 91186-C

OVERVIEW

The Height Adjustable Flipper Table easily accommodates a range of ages and sizes, can be transported with ease, and can be nested for compact storage.

TOP

The top is made of 1 1/8" Particleboard Core with 3mm Flat Vinyl T-Mold Edge. The work surface is constructed of 45# particleboard core with high pressure laminate (HPL) top surface and phenolic backer sheet for balanced construction. 1 1/8" 3mm flat vinyl t-mold is secured to the work surface with brad nails along the perimeter.

FRAME

The black powder-coated frame is made up of two legs and two cross bars. The two legs are made of two 14 Ga 3.15" x 1.6" oval steel tubes, one horizontal and one vertical, that are welded together and measure 22" and 21" long, respectively. The telescoping insert is a 14 Ga 2.6" x 1.2" oval steel tube and is welded to a 10 Ga steel 4.56" x 2.4" x 1.9" channel that holds the flipping mechanism and the table supports. The table supports are tapered 14 ga 13.75" x 2.75" x 2.15" steel channels riveted to 20 Ga 5.5" x 2.5" steel plates and attached to the leg channels with two M6 x 12mm screws in a barrel plug and to the table tops with two M6 x 20mm screws each. The lower of the two crossbars is 16 Ga 2" x 1" steel tube and is screwed through a formed metal cover into the a 10 Ga 4.0" x 0.8" bent steel plate welded to the vertical leg tube with two M6 x 8mm screws on each side. The upper crossbar is directly underneath the table top and is a 16 Ga 1" square steel tube that mounts with a 'T' bracket to the table supports using two M6 x 8mm on each side. Plastic endcaps cover all open tubes. Four casters are attached to the frame with M8 x 15mm stems. Fully assembled, the table can adjust from 28.5" to 45" using the four M6 x 20mm screws from the vertical leg tube into the leg insert.



LAMINATE OPTIONS:



Amber Cherry Asian Night Castle Oak Fusion Maple Graphite Nebula Gray Elm Gray Nebula Low Line White Board

EDGE COLORS:

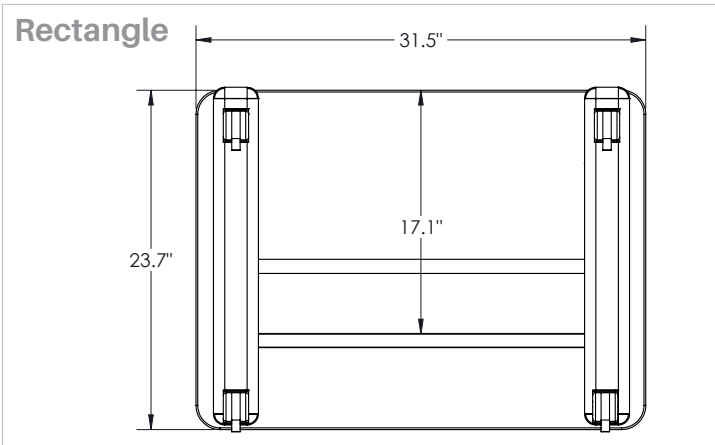
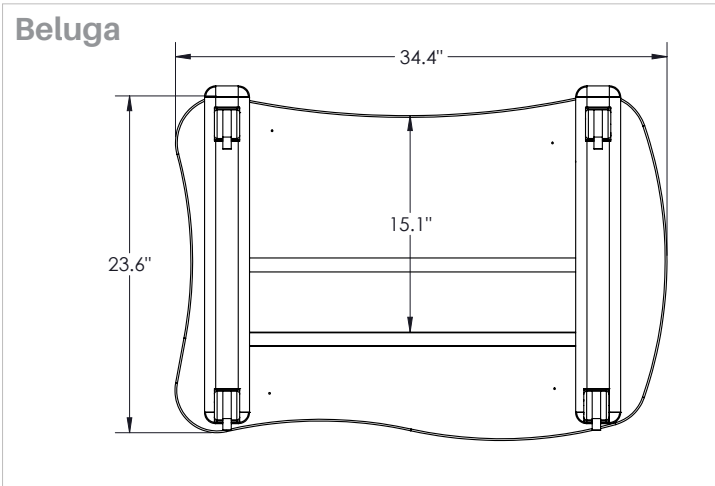
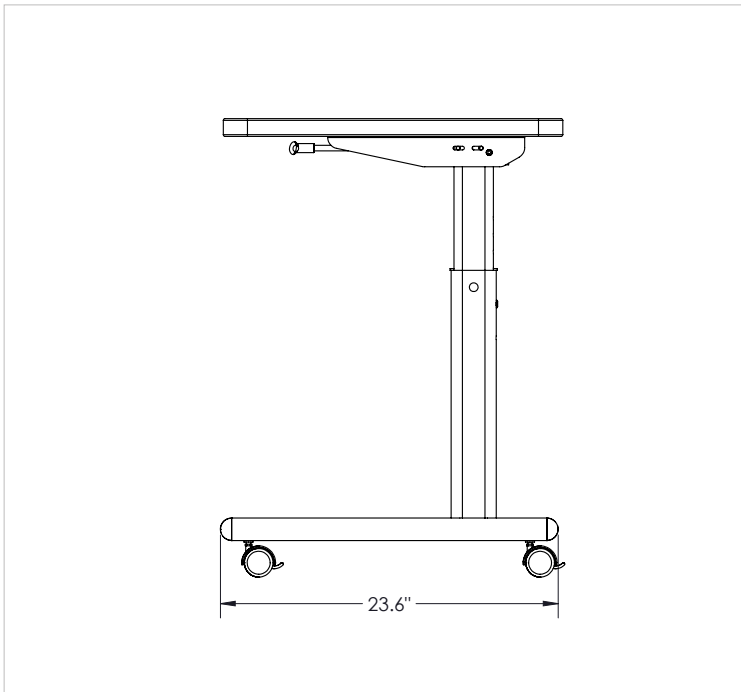
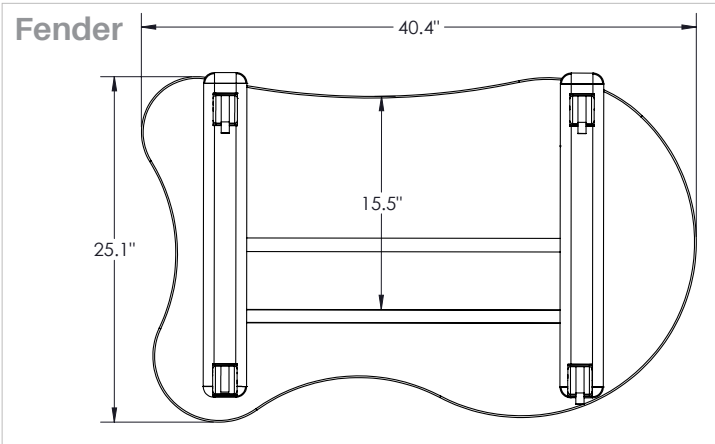
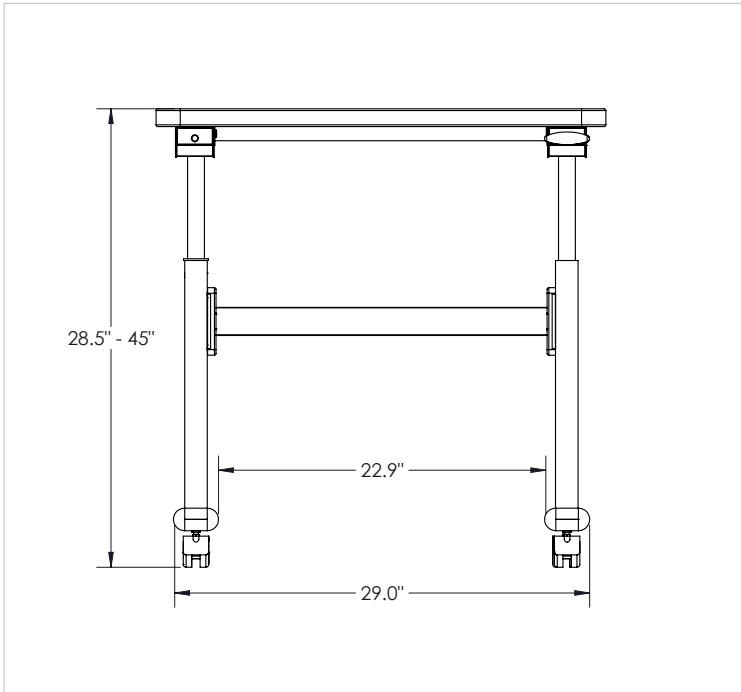


Black Platinum Cool Gray Purple Navy Blue Green Yellow Orange Red

LEG:



Black



DIMENSIONS:

Base Model No.	Description	Height Range	Width	Depth
91186-A-XXXX	Height Adjustable Flipper Table - Fender	28.5" - 45"	40.4"	25.1"
91186-B-XXXX	Height Adjustable Flipper Table - Beluga	28.5" - 45"	34.4"	23.6"
91186-C-XXXX	Height Adjustable Flipper Table - Rectangle	28.5" - 45"	31.5"	23.7"



MooreCo, Inc.
 2885 Lorraine Avenue | Temple, TX 76501
 p: 800.749.2258 | f: 866.888.7483
www.moorecoinc.com