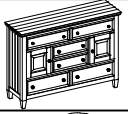

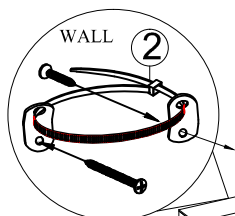


ASSEMBLY INSTRUCTION

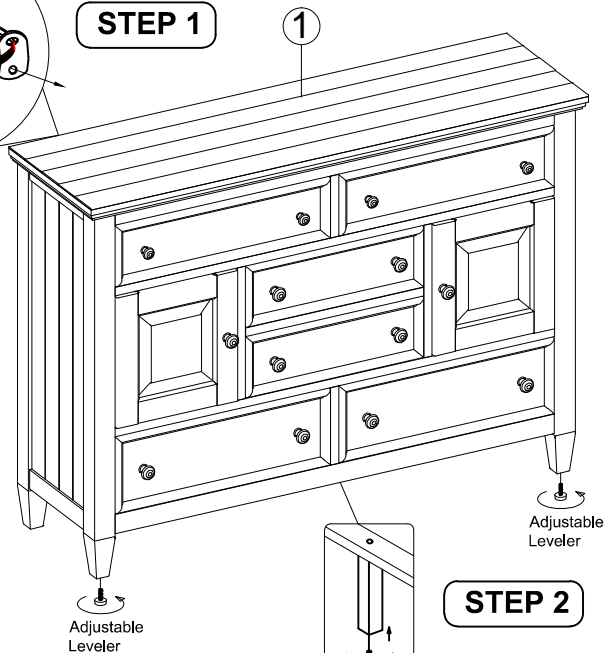
2 DOOR 6 DRAWER DRESSER

Thank you for purchasing this quality product. Be sure to check all packing material carefully for small Hardware which may have come loose inside the carton during shipment. Identify and count all Hardware and compare with the Hardware List Below.

Parts List			
No.	Description		Qty.
①	2 Door 6 Drawer Dresser		1 Pc
②	Tipping Restraint		1 Set </td

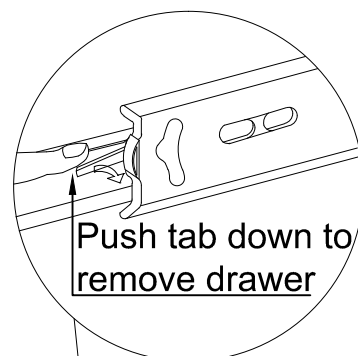


STEP 1

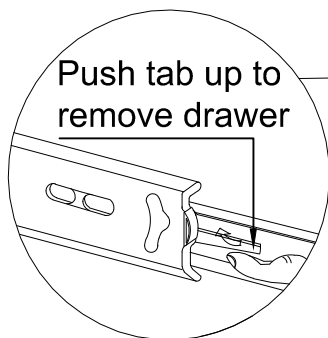


STEP 2

Center Leg



Push tab down to
remove drawer



Push tab up to
remove drawer

To remove drawer, simultaneously pull
tab up on one side and push down on
the other and remove drawer.