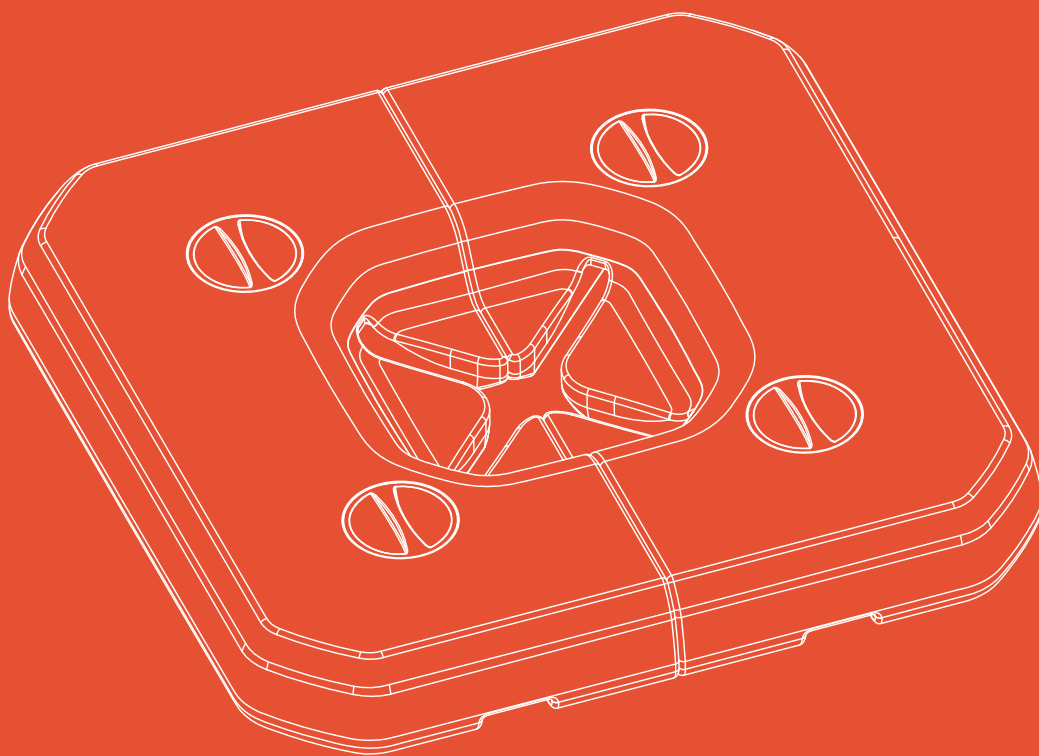


Fillable Umbrella Base

USE AND CARE GUIDE



Questions, problems, missing parts?

Before returning to the store, please contact our Customer Service

THANK YOU

We appreciate the trust and confidence you have placed in our store by purchasing this umbrella base. We strive to continually create quality products designed to enhance your home. Visit us online to see our full line of products available for your home improvement needs.

Table of Contents

Table of Contents	01
Important Safety Information	02
- Safety Warnings	02
Warranty	03
Installation	04
Care and Cleaning	07

Important Safety Information

Safety Warnings

- Umbrella is not included.
- Be careful when handling umbrella base stand as it is heavy.
- If any parts are missing, broken, damaged, or worn, stop using this product until repairs are made and/or factory replacement parts are installed.
- Do not use this item in a way inconsistent with the manufacturer's instructions as this could void the product warranty.
- This product is intended for residential use only.
- Item is heavy; be careful not to accidentally place on feet when moving the base.

Warranty

1 YEAR UMBRELLA BASE WARRANTY

What Is Covered

We warrant the base to be free of manufacturing defects to the original purchaser for one year.

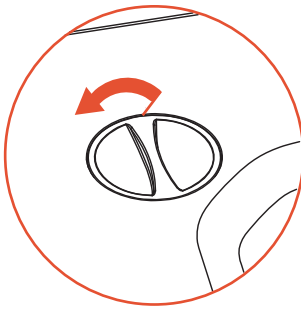
What Is Not Covered

It remains the customer's responsibility for freight and packaging charges to and from our service center. This warranty does not cover commercial use, hardware, acts of nature, fire, freezing, and abusive use. In addition, purchase parts are not covered under this warranty. We reserve the right to make substitutions with similar merchandise, if the model in question is no longer in production.

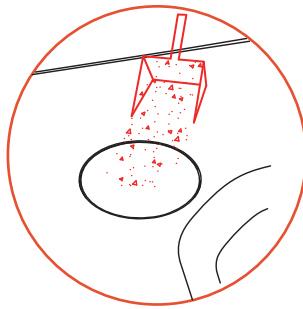
STEP 1.1

Open the lid counterclockwise, then add 100kg (220 pounds) of sand and fill it with water. Close the lid clockwise. The base weight needs to be 140kg (310 pounds) before use.

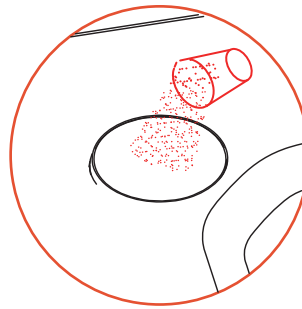
1 OPEN



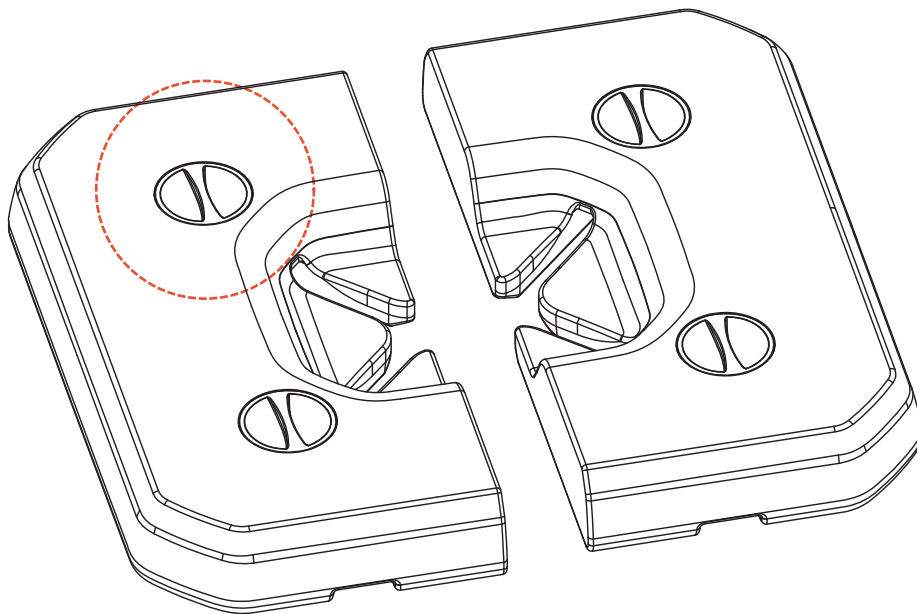
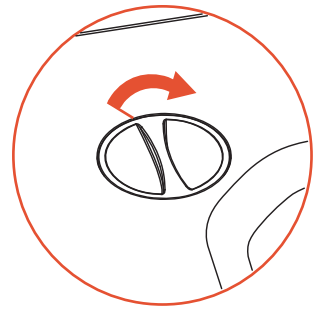
2 SAND



3 WATER

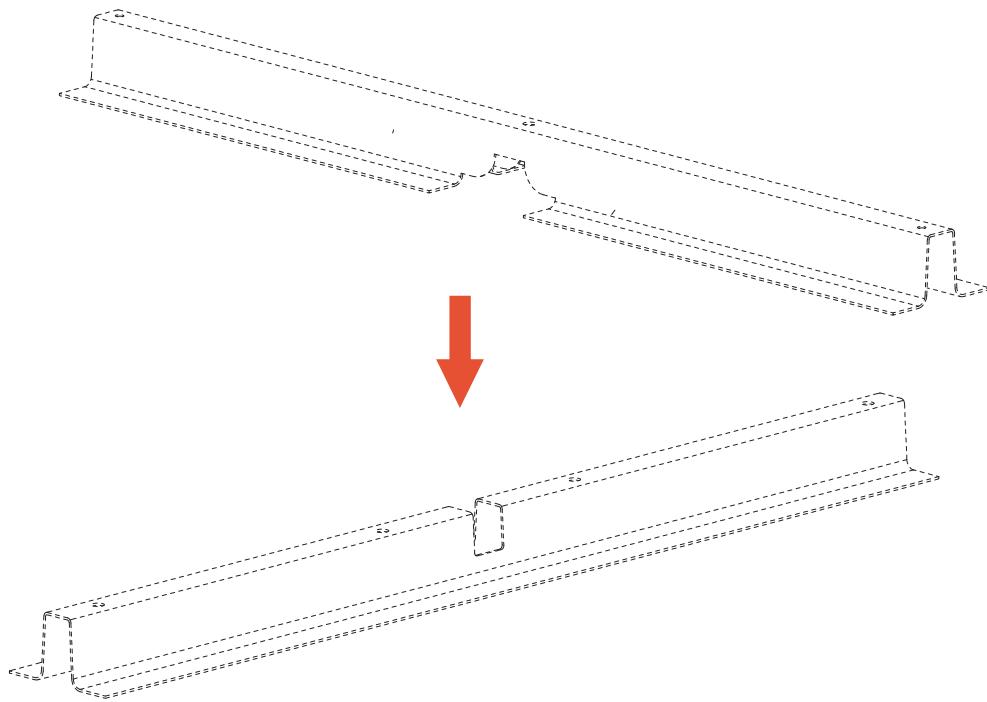


4 CLOSE



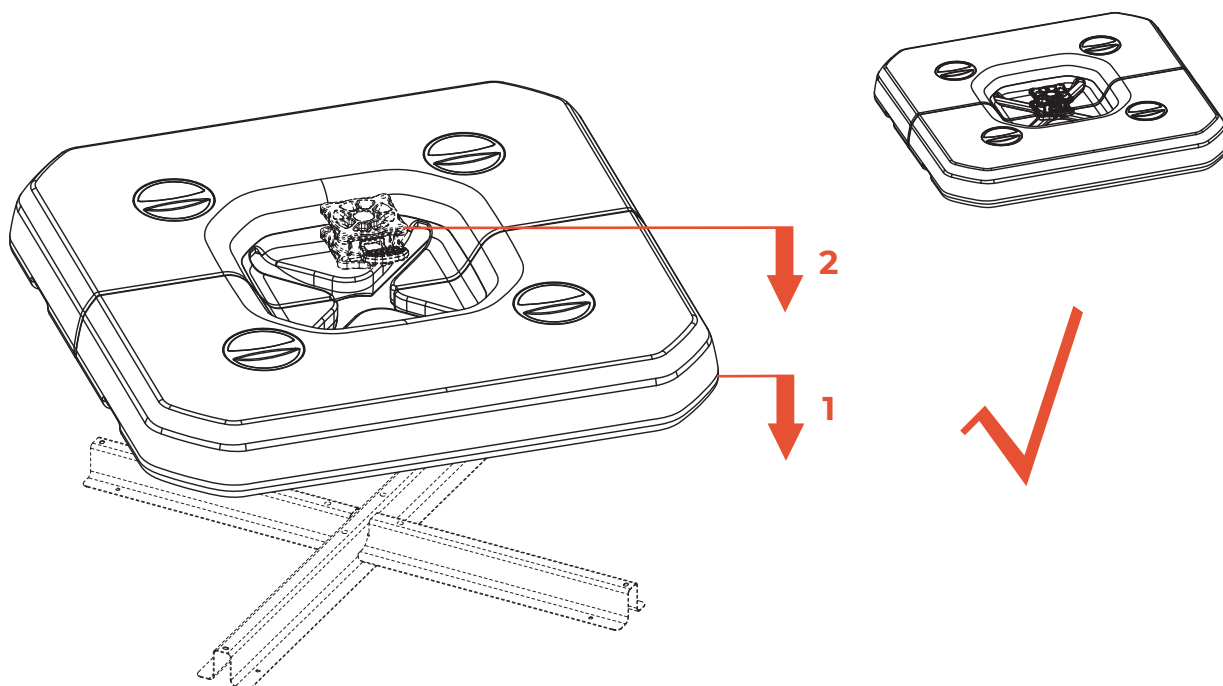
STEP 1.2

Attach the Upper Bracket onto the Lower Bracket. (not provided).

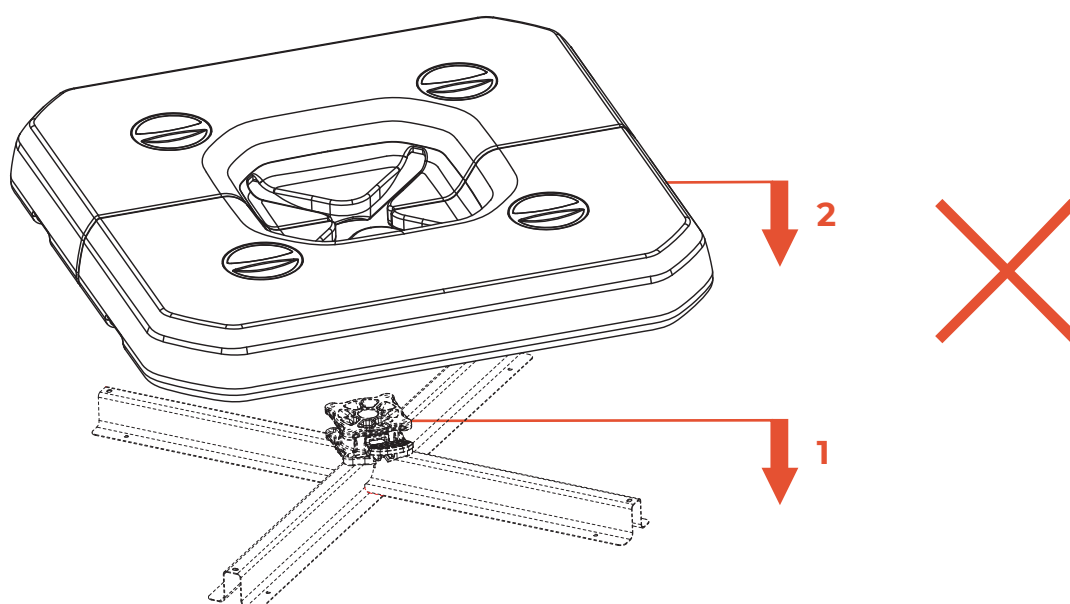


STEP 1.3

Before installing the rotating base, place the base filled with sand and water on the cross base. The cross base needs to be aligned with the base slot. (cross base and rotating base are not provided).



Warning: If the cross base and the rotating base are installed first, the base filled with sand and water cannot be installed on the cross base.



NOTE: This umbrella base is compatible with all our outdoor umbrellas.

Care and Cleaning

- For best results, clean the frame and fabric with a damp cloth, and dry thoroughly. This will help prevent mildew by removing dirt particles that may accumulate.
- Do not clean with abrasive materials, harsh detergents, or corrosive liquids like gasoline or acetone.
- Wipe clean with mild detergent, warm water, and a soft cloth.