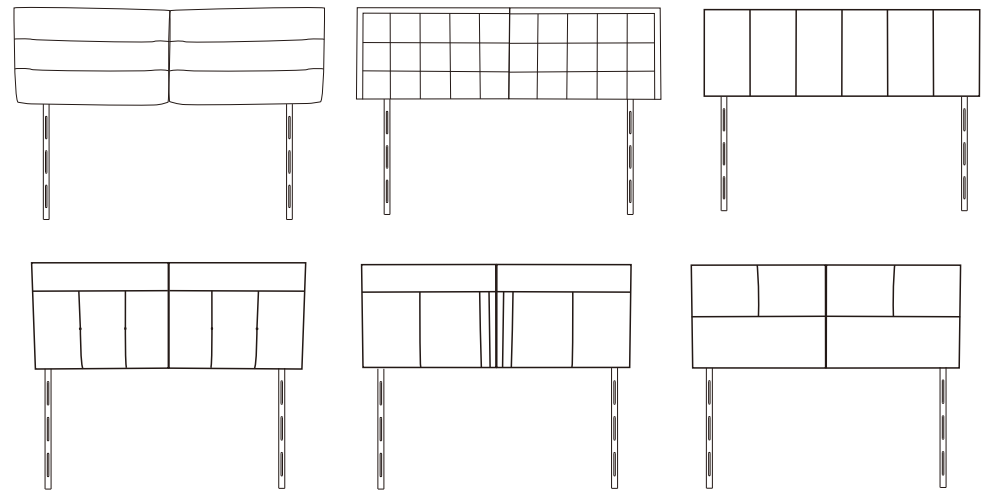


Assembly Instructions

⚠ Before you throw the package, please ensure that you have all the parts needed for the assembly.

⚠ **Hardware Note:**
1. Please **do not completely tighten** all the hardware, turn the bolts about **50%** by hand according to the AI step by step. Then adjust 4 legs when they are at same height, tighten all the bolts completely at last.
2. All the bolts should be assembled **vertically** to the holes.

⚠ **Spare parts** can be found in the hardware box if you do not have enough parts to assemble.



⚠ THIS INSTRUCTION BOOKLET CONTAINS IMPORTANT SAFETY INFORMATION. PLEASE READ AND KEEP FOR FUTURE REFERENCE.

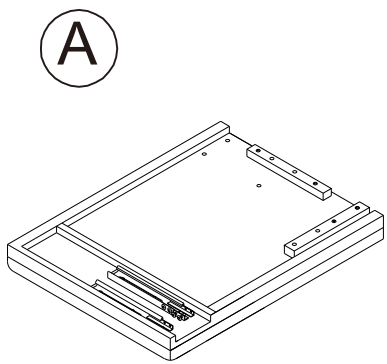
⚠ Different styles of headboard are assembled in the same way.

Assembly Instructions

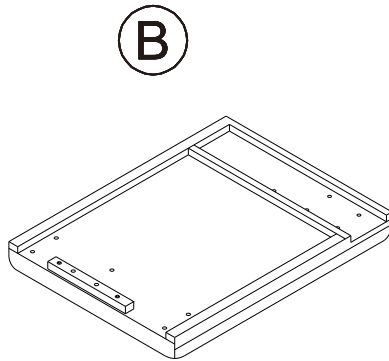
MADE IN CHINA

Parts and Hardware

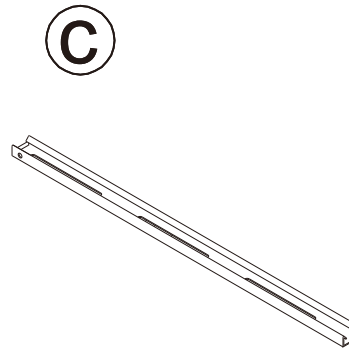
Please check and make sure you have all parts and hardware before starting assembly process. Attention: your headboard style may different with the AI.



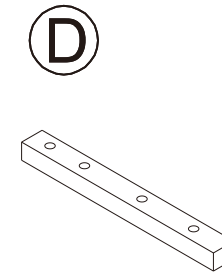
Right half headboard x1



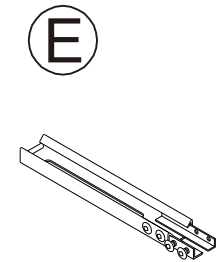
Left half headboard x1



Under leg x2



Metal tube x3
2pcs assembled on part A
1pc assembled on part B



Upper leg x2
assembled on part A

Remove from panels

①



Small bolt x16
assembled on part E

②



Long bolt x12
6pcs assembled on part A

③



Wrench x1

④



Large bolt x4
assembled on part A

⑤



Spring washer x4

⑥



Flat washer x16

Spare parts

①  x4

②  x3

③  x1

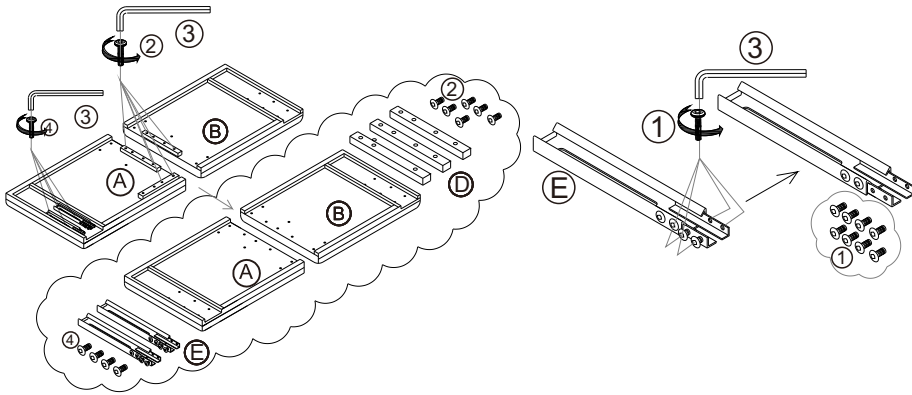
Assembly Instructions

MADE IN CHINA

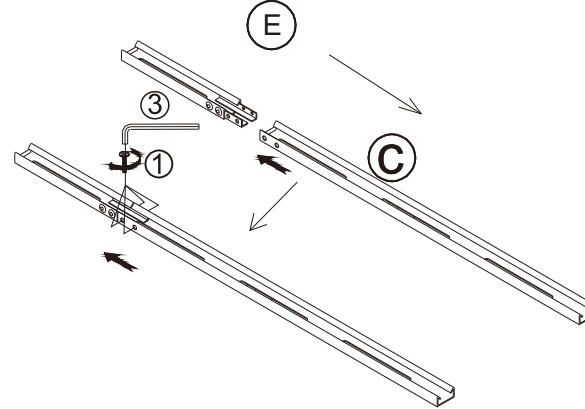
Parts and Hardware

Please check and make sure you have all parts and hardware before starting assembly process. Attention: your headboard style may different with the AI.

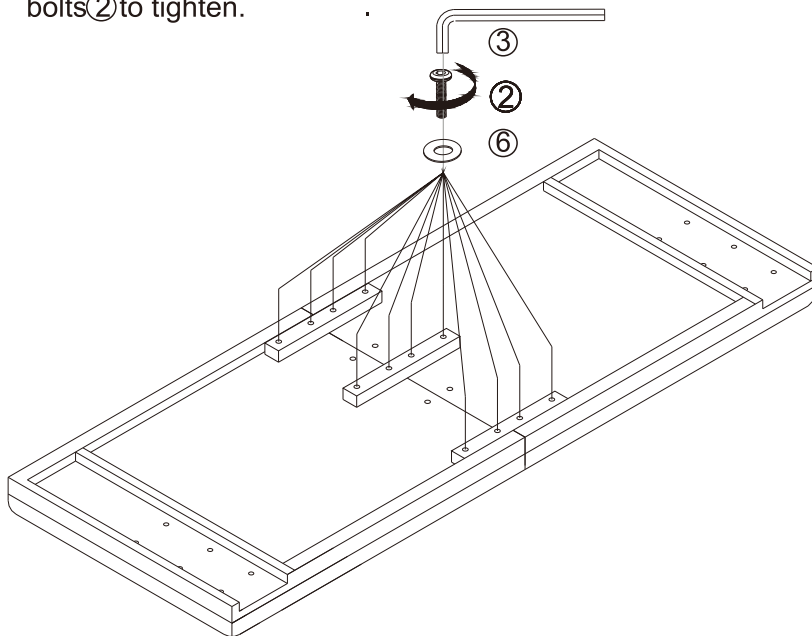
STEP 1 Remove part E and part D from part A.
Remove 8 bolts 1 from part E.



STEP 2 Assemble upper and under legs together using the bolts
remove from part E.



STEP 3: Connect 2 half headboards (A) with 3 pcs metal tube and use
bolts 2 to tighten.



STEP 4: Attach the 2 pcs assembled legs to the headboard with bolts 4.
Choose the suitable height for your bed.

