

ASSEMBLY INSTRUCTIONS



ACCENT TABLE

ASSEMBLY INSTRUCTIONS

ASSEMBLY TIPS:

1. Remove hardware from box and sort by size.
2. Please check to see that all hardware and parts are present prior to start of assembly.
3. Please follow attached instructions in the same sequence as numbered to assure fast & easy assembly.






WARNING!





1. Don't attempt to repair or modify parts that are broken or defective. Please contact the store immediately.
2. This product is for home use only and not intended for commercial establishments.

ASSEMBLY TIME 25 MINUTES

PARTS IDENTIFICATION

A	TOP GLASS		1PC
B	LEG CONNECTOR		2PCS
C	LEG		3PCS

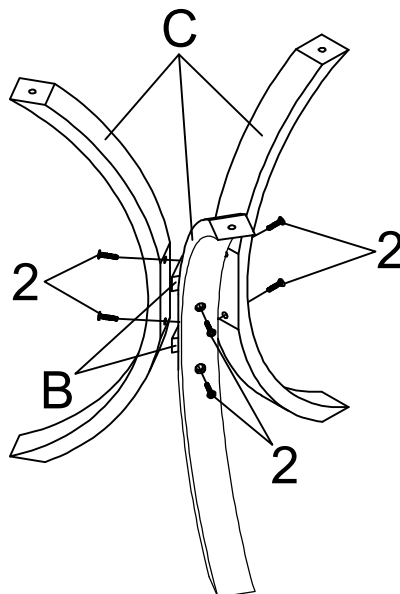
HARDWARE IDENTIFICATION

1	SHORT BOLT (3/16" x 12mm)		3PCS	3	SUCTION CUP (Ø22 x 1mm)		3PCS
2	LONG BOLT (Ø8 x 7.5mm)		6PCS	4	ALLEN WRENCH (4mm)		1PC

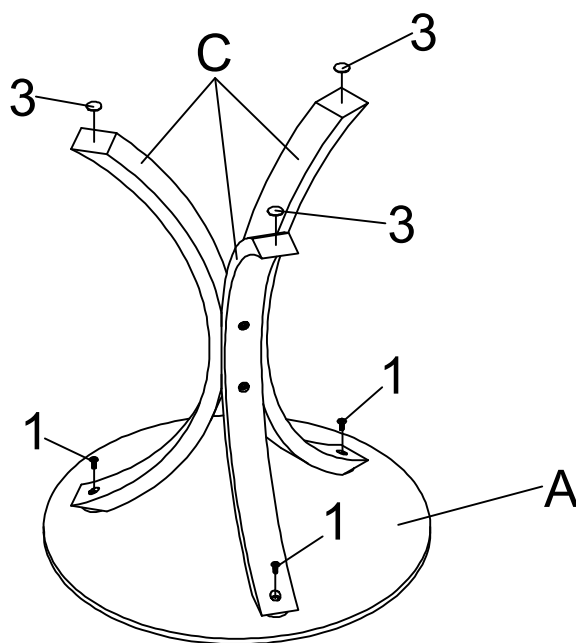
ASSEMBLY INSTRUCTIONS

STEP 1

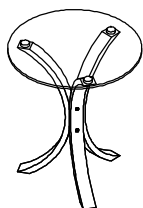
Do not tighten until each step is completed or instructed.



STEP 2



COMPLETE



How to clean Acrylic product:

Using a dry soft microfiber cloth, lightly brush off any dust.

For additional care, dampen the cloth with warm water.

For deepest cleaning, use an Acrylic cleaner.

ASSEMBLY INSTRUCTIONS

Product Size : 457 DIA X 540 H (MM)

Product Size : 18" DIA X 21 $\frac{1}{4}$ "

