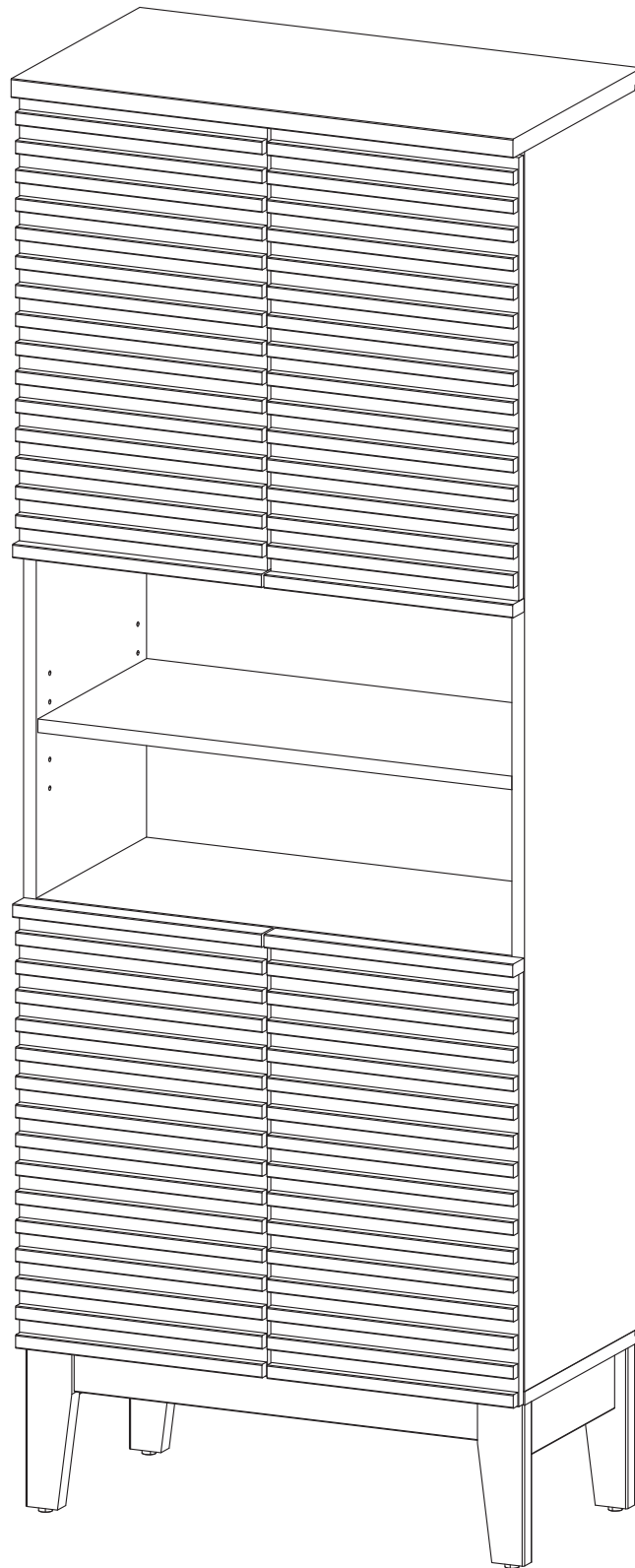


## ASSEMBLY INSTRUCTIONS

# EEI-6852

VO.12.19.23



Questions? Contact us!

609.256.9000 • [cs@modway.com](mailto:cs@modway.com)  
[www.modway.com](http://www.modway.com)

**\*modway**

# Let's get started!

\*modway



Read through all of the instructions before starting



Care instructions are listed in the last step of this manual



Approx. 60 minutes assembly time



2 people recommended for assembly



Make sure you have all parts and components before discarding any packing materials

Only use hand tools to assemble this item. Do not use power tools. Do not tighten bolts or screws completely until all hardware is lined up and inserted into the holes.

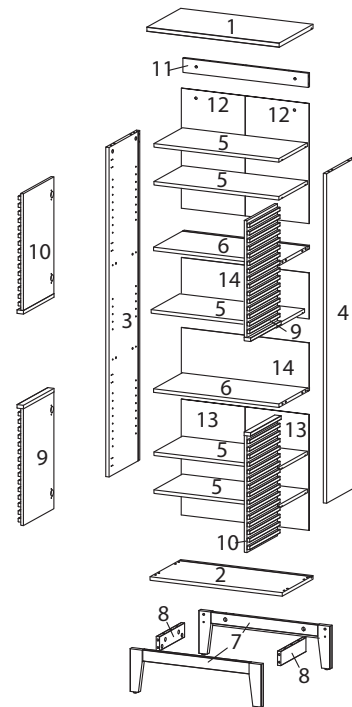
Do not over-tighten screws and bolts to avoid stripping the hardware or cracking the item.

Assemble your item on a flat, carpeted area, with plenty of space to work. This will prevent damage and scratches to your floors or the item while you're assembling the product.

Keep all components and packaging out of reach of children or animals to avoid risk of choking or suffocation.

## Furniture components:

1	Top Board	x1	11	Support Board	x1
2	Bottom Board	x1	12	Back Board 1	x2
3	Side Board Left	x1	13	Back Board 2	x2
4	Side Board Right	x1	14	Back Board 3	x2
5	Adjustable Shelf	x5			
6	Fixed Shelf	x2			
7	Assembly Leg	x2			
8	Bottom Skirt	x2			
9	Door 1	x2			
10	Door 2	x2			



## Provided hardware:

A		Cam Bolt Ø6 x 35 mm	x27	J		Screw Cap Ø15 mm	x4	HS26A		Hinge	x8
B		Cam Lock Ø15 mm	x24	K		Joining Strip 496 mm	x1	<h2>What you need:</h2> <div> <p>Phillips Head Screwdriver</p> </div>			
C		Wood Dowel Ø8 x 30 mm	x26	L		Joining Strip 478 mm	x1				
D		Screw M 7 x 50 mm	x4	M		Joining Strip 562 mm	x1				
E		Allen Key	x2	N		Screw 5.5 x 45 mm	x2				
F		Screw M 4.5 x 12.5 mm	x48	O		Ring	x2				
G		Shelf Pin	x20	P		Wall Plug	x2				
H		Wedge	x20	Q		Wood Dowel Ø6 x 30 mm	x4				
I		Screw M 3.5 x 15.5 mm	x20	R		Cam Lock Ø12 mm	x3				

Wait!

Missing parts or hardware? Need assistance?  
Contact us before returning your item. We're here to help!  
609.256.9000 • cs@modway.com

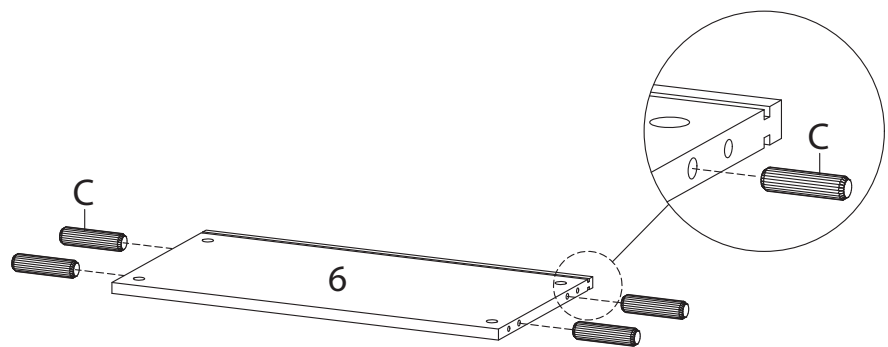
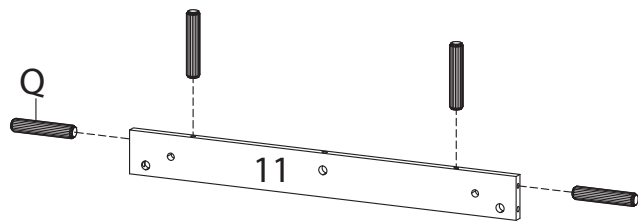
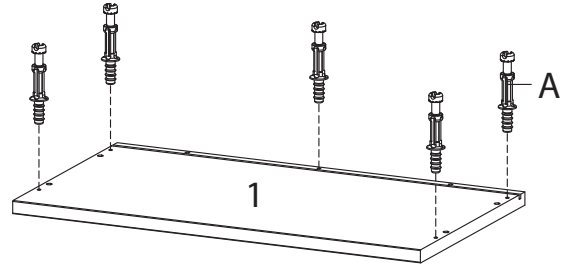
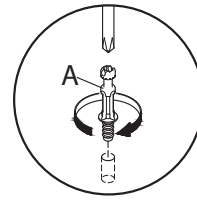
# Step 1

## HARDWARE

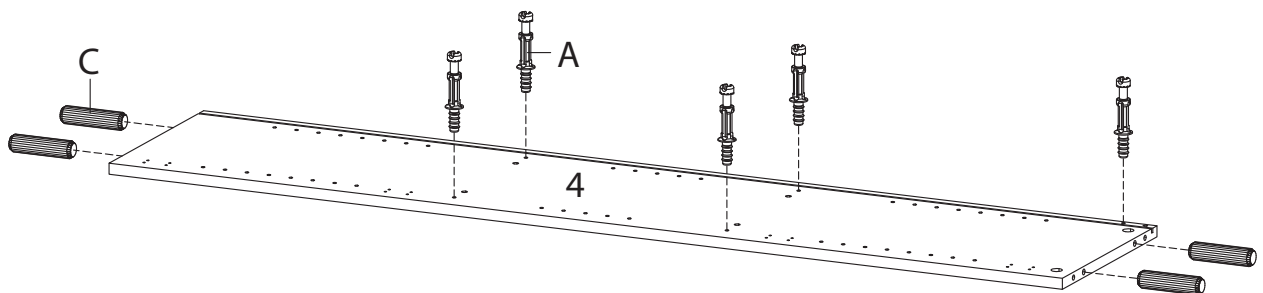
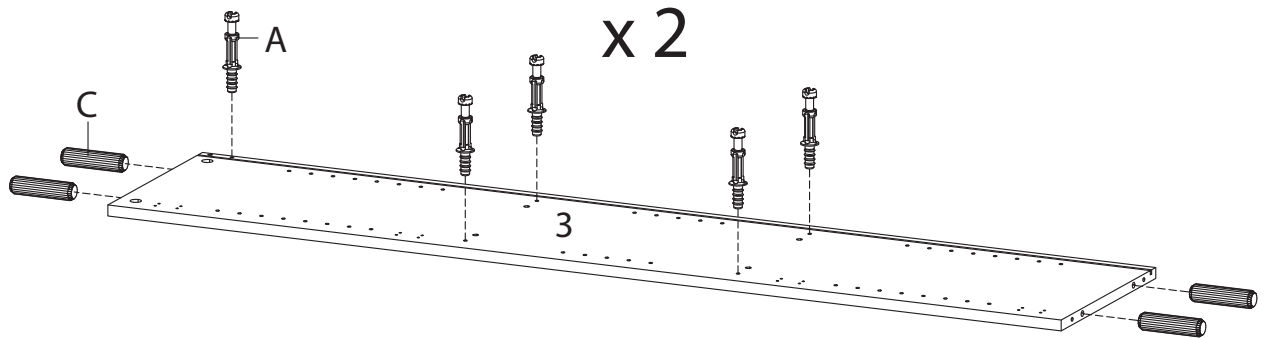
- A** Cam Bolt Ø6 x 35 mm x15
- C** Wood Dowel Ø8 x 30 mm x16
- Q** Wood Dowel Ø6 x 30 mm x4

## COMPONENTS

- 1** Top Board x1
- 3** Side Board Left x1
- 4** Side Board Right x1
- 6** Fixed Shelf x2
- 11** Support Board x1



x 2



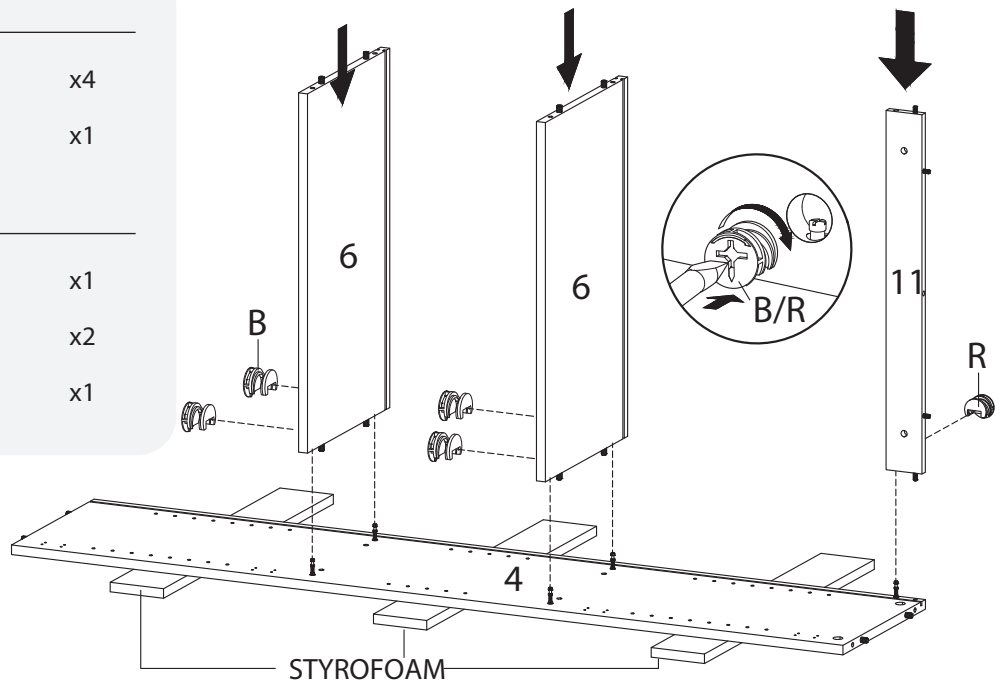
## Step 2

### HARDWARE

- B** Cam Lock Ø15 mm x4
- R** Cam Lock Ø12 mm x1

### COMPONENTS

- 4** Side Board Right x1
- 6** Fixed Shelf x2
- 11** Support Board x1



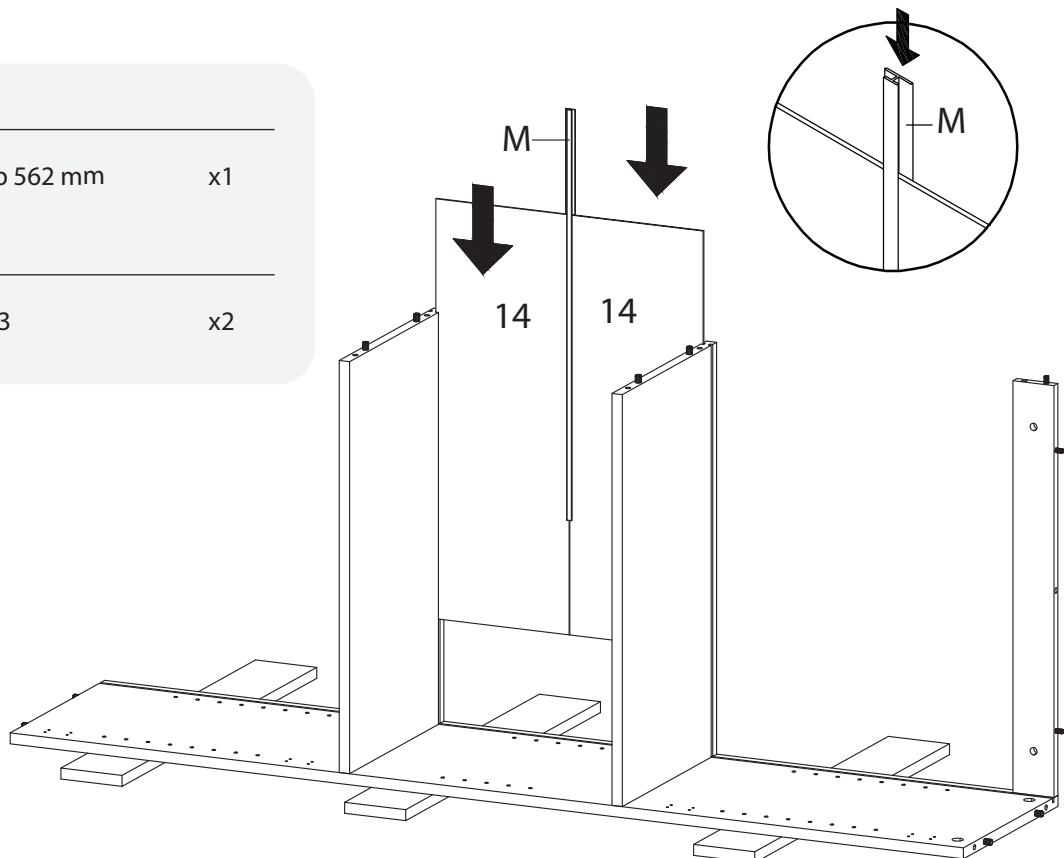
## Step 3

### HARDWARE

- M** Joining Strip 562 mm x1

### COMPONENTS

- 14** Back Board 3 x2



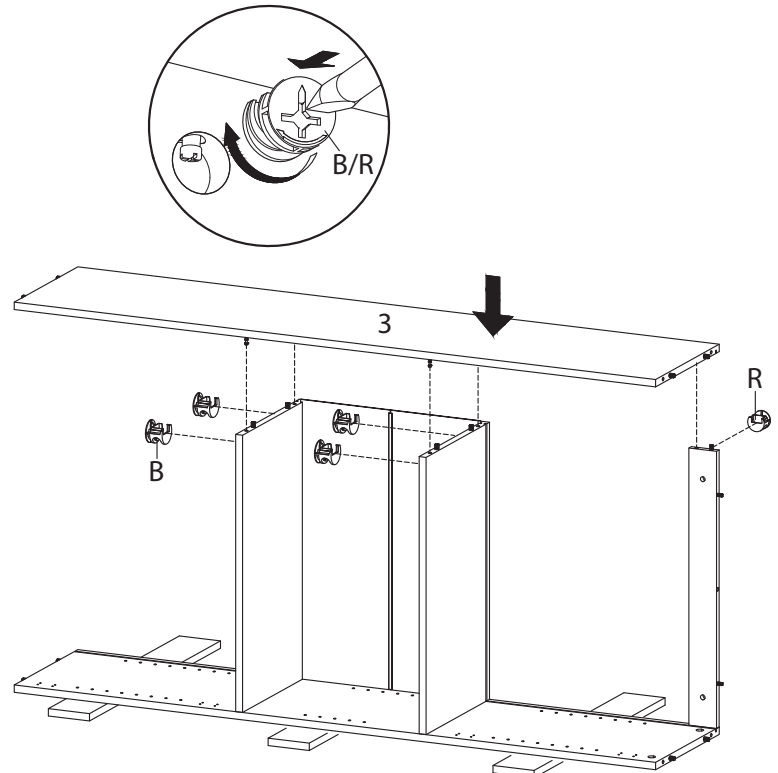
## Step 4

### HARDWARE

- B** Cam Lock Ø15 mm x4
- R** Cam Lock Ø12 mm x1

### COMPONENTS

- 3** Side Board Left x1



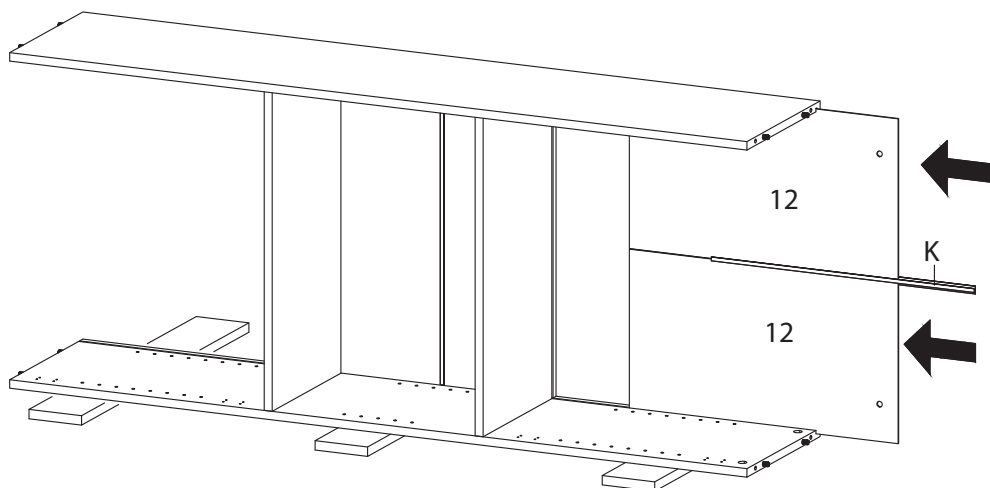
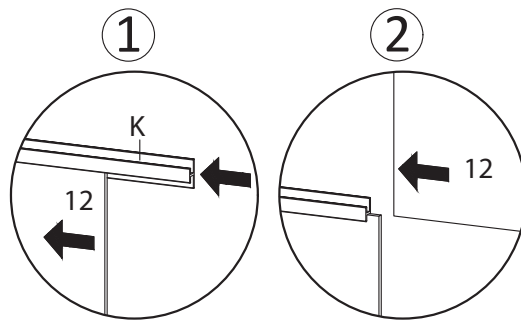
## Step 5

### HARDWARE

- K** Joining Strip 496 mm x1

### COMPONENTS

- 12** Back Board 1 x2



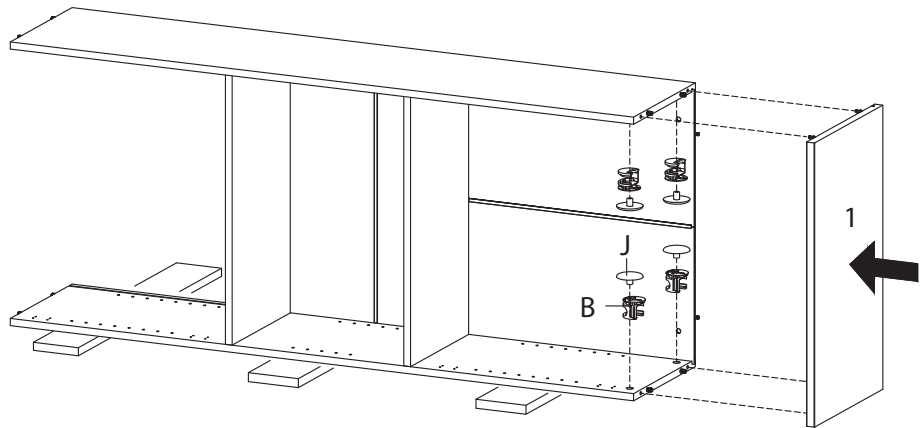
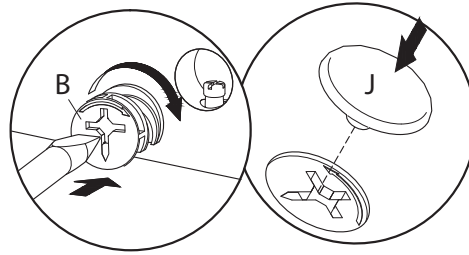
## Step 6

### HARDWARE

- B** Cam Lock Ø15 mm x4
- J** Screw Cap Ø15 mm x4

### COMPONENTS

- 1** Top Board x1



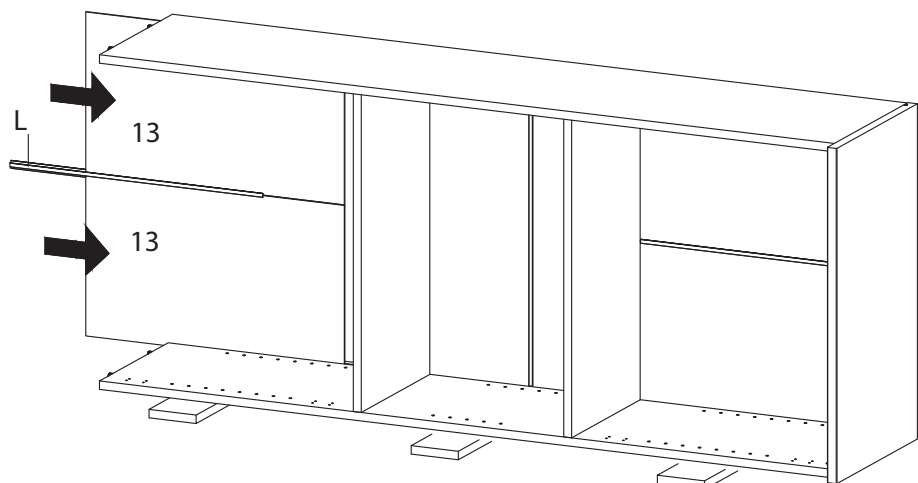
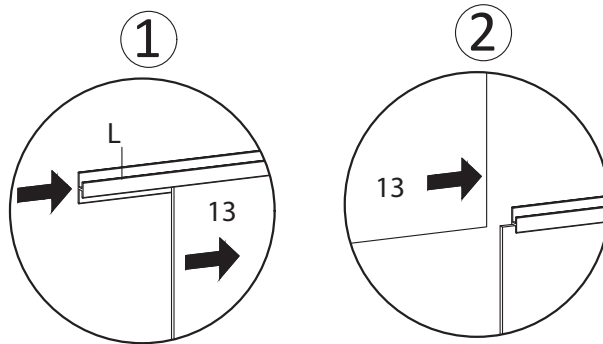
## Step 7

### HARDWARE

- L** Joining Strip 478 mm x1

### COMPONENTS

- 13** Back Board 2 x2



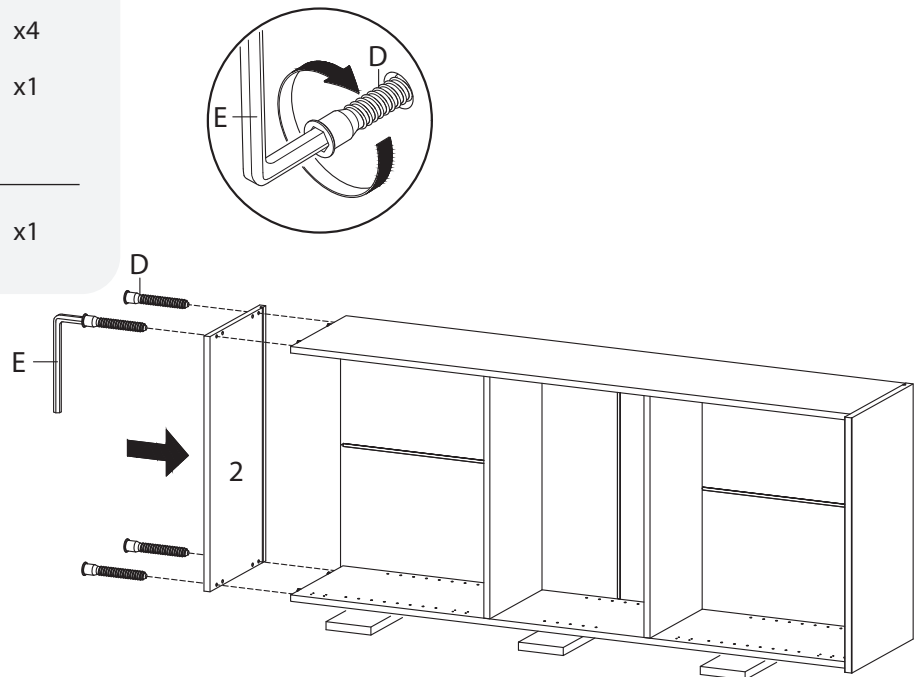
## Step 8

### HARDWARE

- D** Screw M 7 x 50 mm x4
- E** Allen Key x1

### COMPONENTS

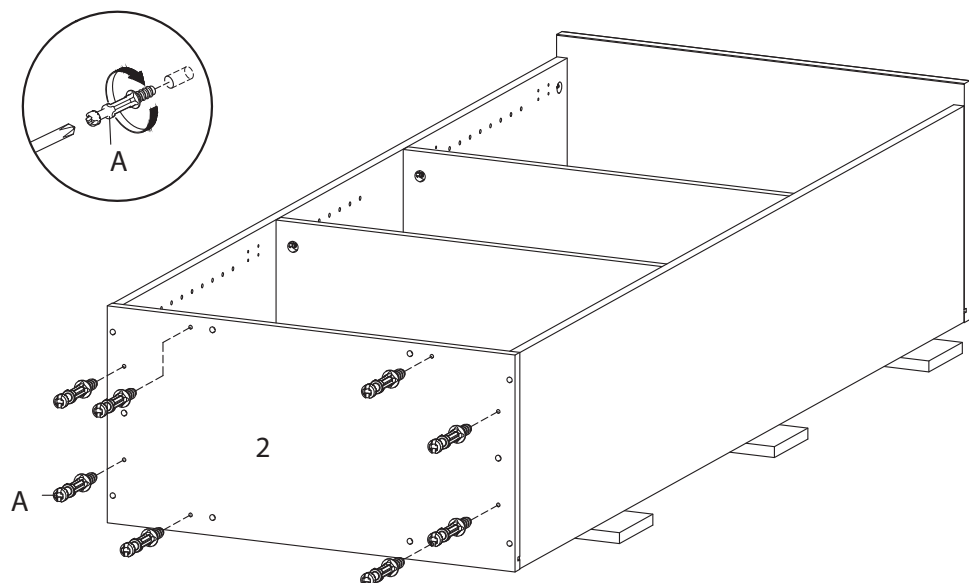
- 2** Bottom Board x1



## Step 9

### HARDWARE

- A** Cam Bolt Ø6 x 35 mm x8



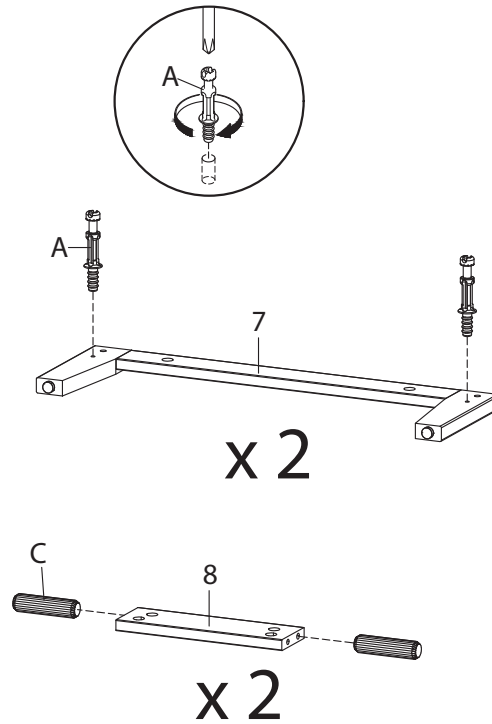
## Step 10

### HARDWARE

- A** Cam Bolt Ø6 x 35 mm x4
- C** Wood Dowel Ø8 x 30 mm x4

### COMPONENTS

- 7** Assembly Leg x2
- 8** Bottom Skirt x2



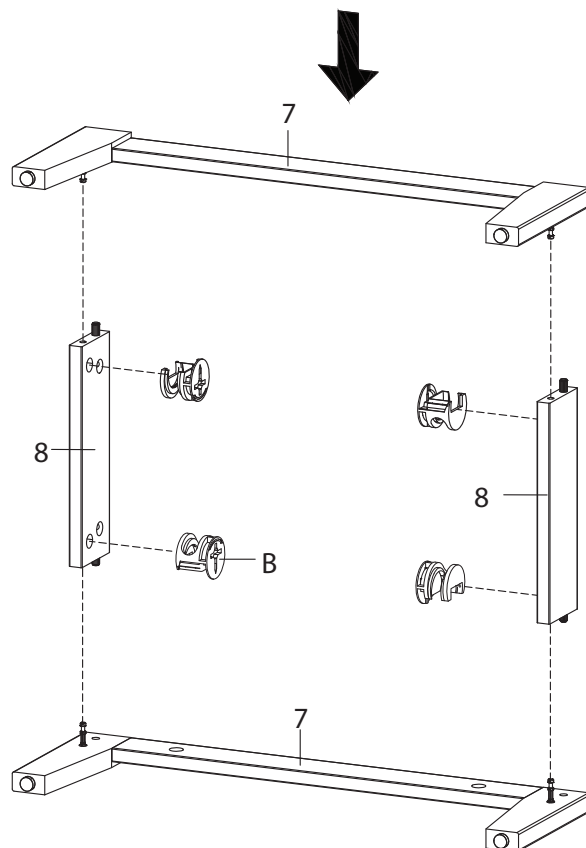
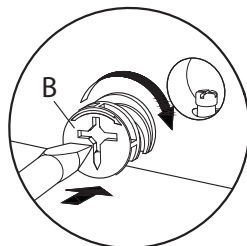
## Step 11

### HARDWARE

- B** Cam Lock Ø15 mm x4

### COMPONENTS

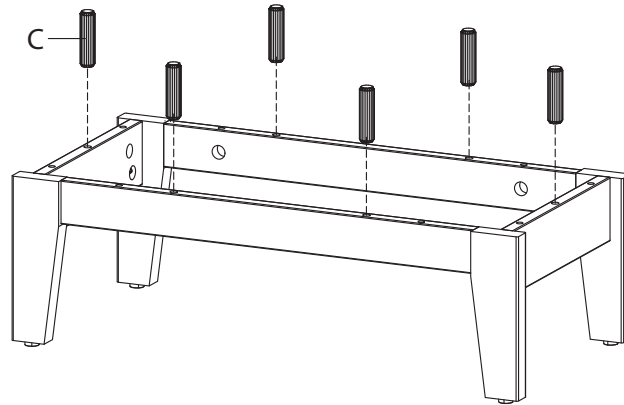
- 7** Assembly Leg x2
- 8** Bottom Skirt x2



# Step 12

## HARDWARE

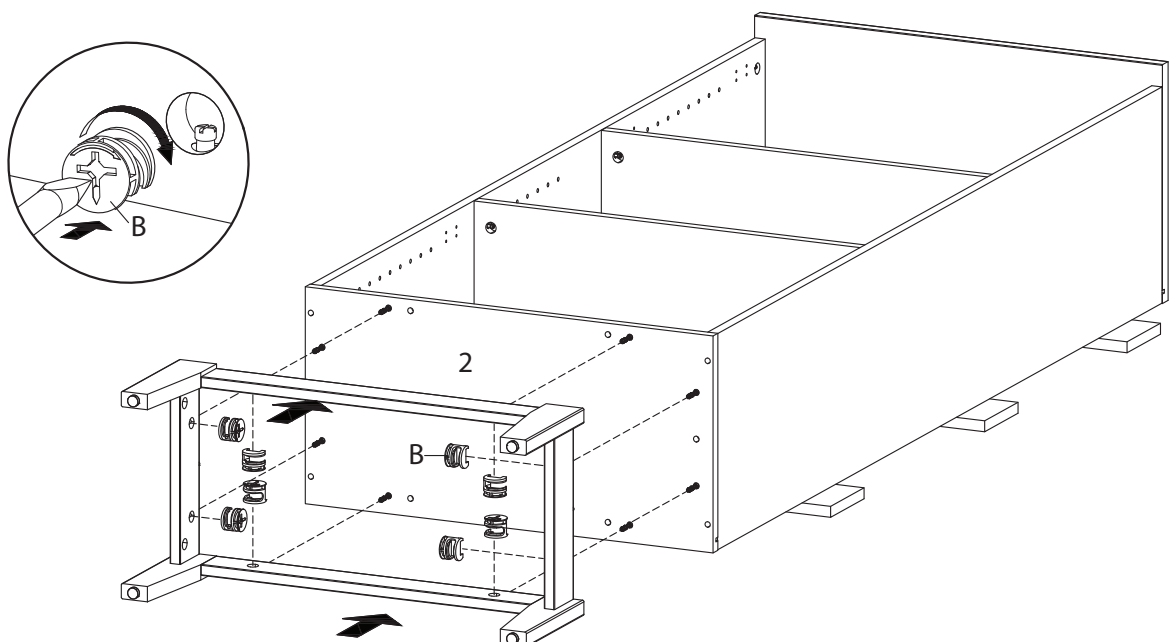
- C** Wood Dowel Ø8 x 30 mm x6



# Step 13

## HARDWARE

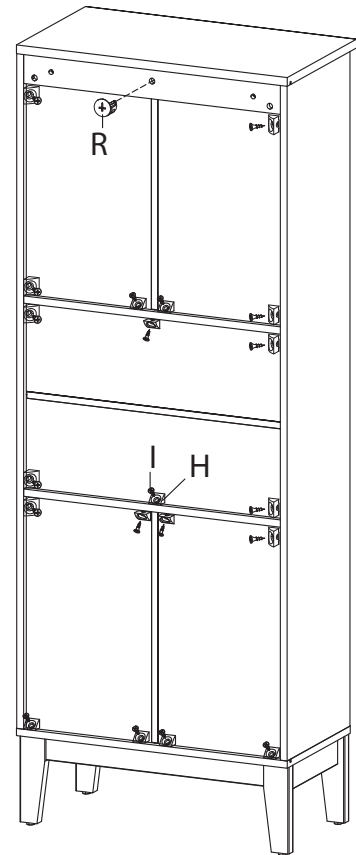
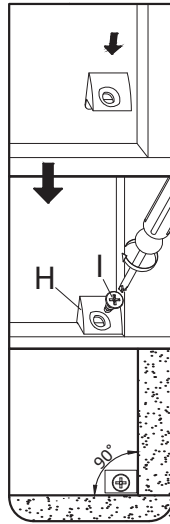
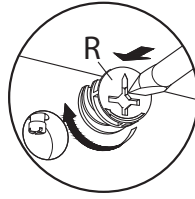
- B** Cam Lock Ø15 mm x8



## Step 14

### HARDWARE

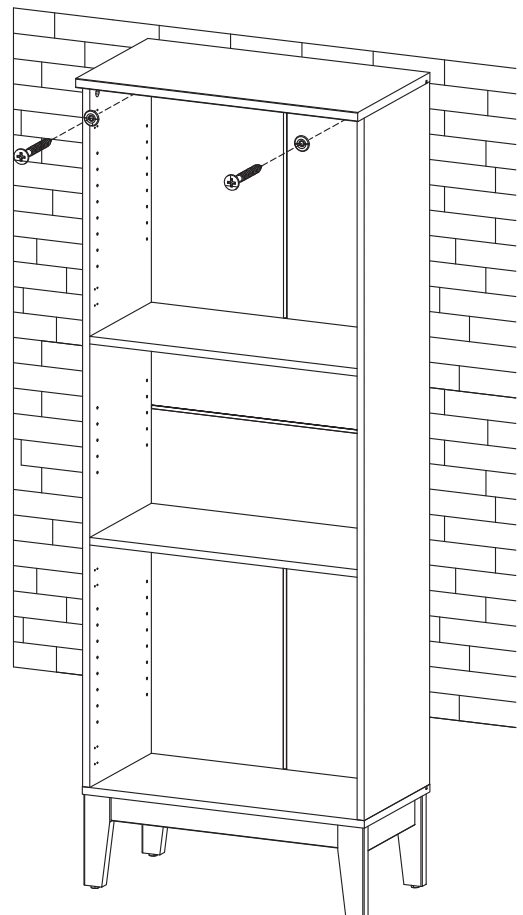
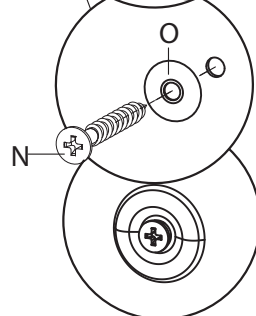
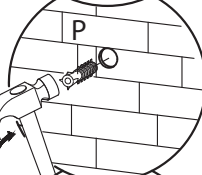
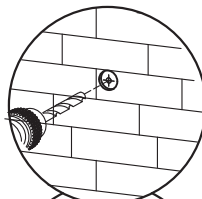
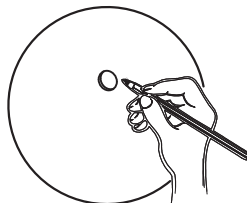
- |          |                       |     |
|----------|-----------------------|-----|
| <b>H</b> | Wedge                 | x20 |
| <b>I</b> | Screw M 3,5 x 15,5 mm | x20 |
| <b>R</b> | Cam Lock Ø12 mm       | x1  |



## Step 15

### HARDWARE

- |          |                   |    |
|----------|-------------------|----|
| <b>N</b> | Screw 5,5 x 45 mm | x2 |
| <b>O</b> | Ring              | x2 |
| <b>P</b> | Wall Plug         | x2 |



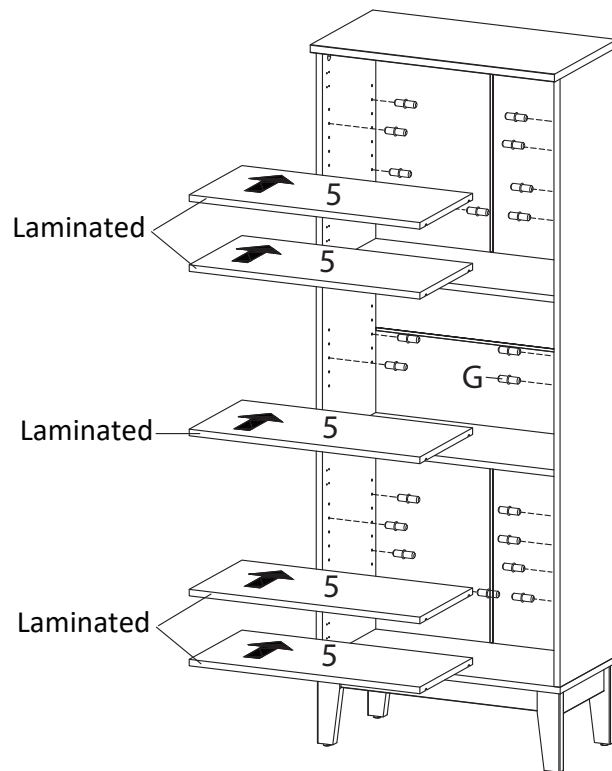
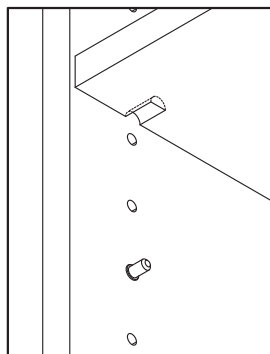
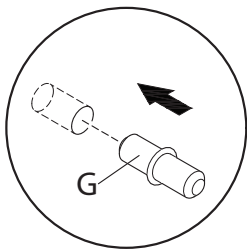
## Step 16

### HARDWARE

**G** Shelf Pin x20

### COMPONENTS

**5** Adjustable Shelf x5



## Step 17

### HARDWARE

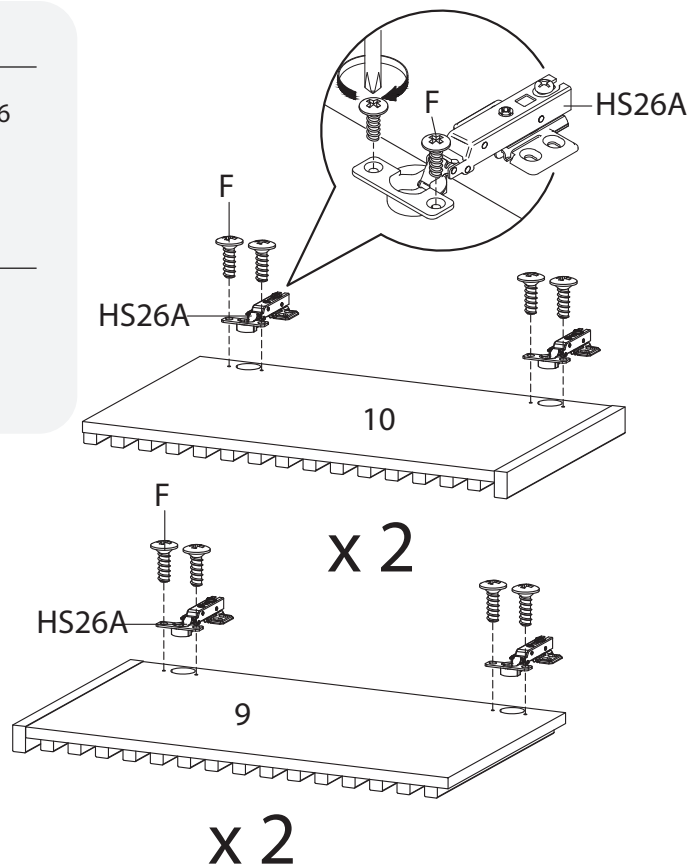
**F** Screw M 4.5 x 12.5 mm x16

**HS26A** Hinge x8

### COMPONENTS

**9** Door 1 x2

**10** Door 2 x2



# Step 18

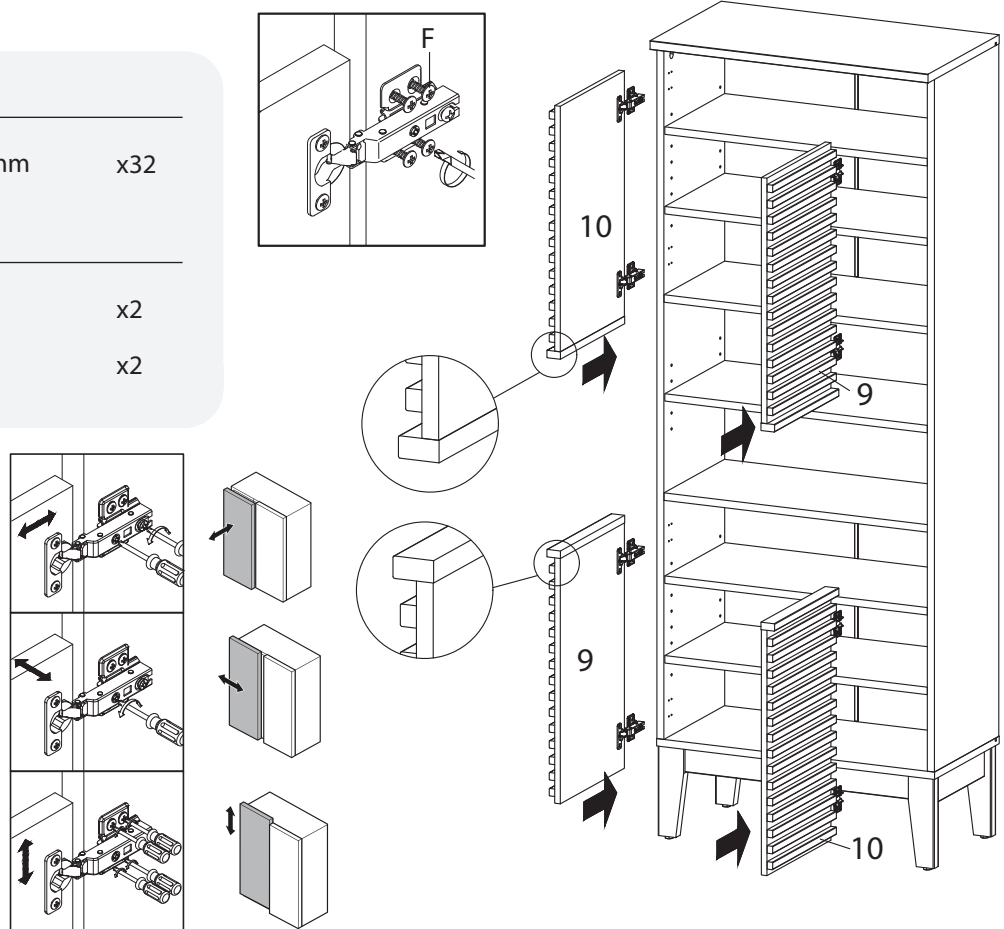
## HARDWARE

**F** Screw M 4.5 x 12.5 mm x32

## COMPONENTS

**9** Door 1 x2

**10** Door 2 x2



## Great job!

Cabinet assembly is complete.

### ♥ CARING FOR YOUR ITEM

Indoor use only.

Not contract grade.

Clean using a non-abrasive cloth and a mild cleaner.

Never use harsh chemicals, as they could damage the finish or integrity of the item.

CONNECT WITH US!   

Tag us @modway\_furniture and #modway for a chance to be featured.

